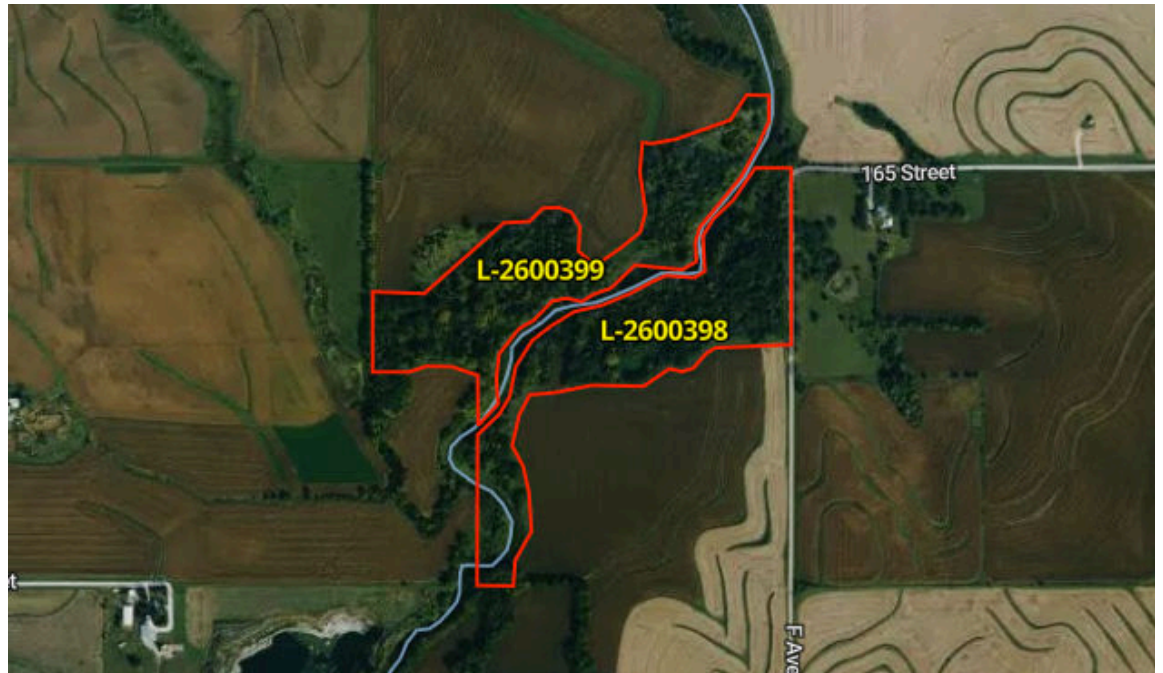




## L-2600398, L-2600399

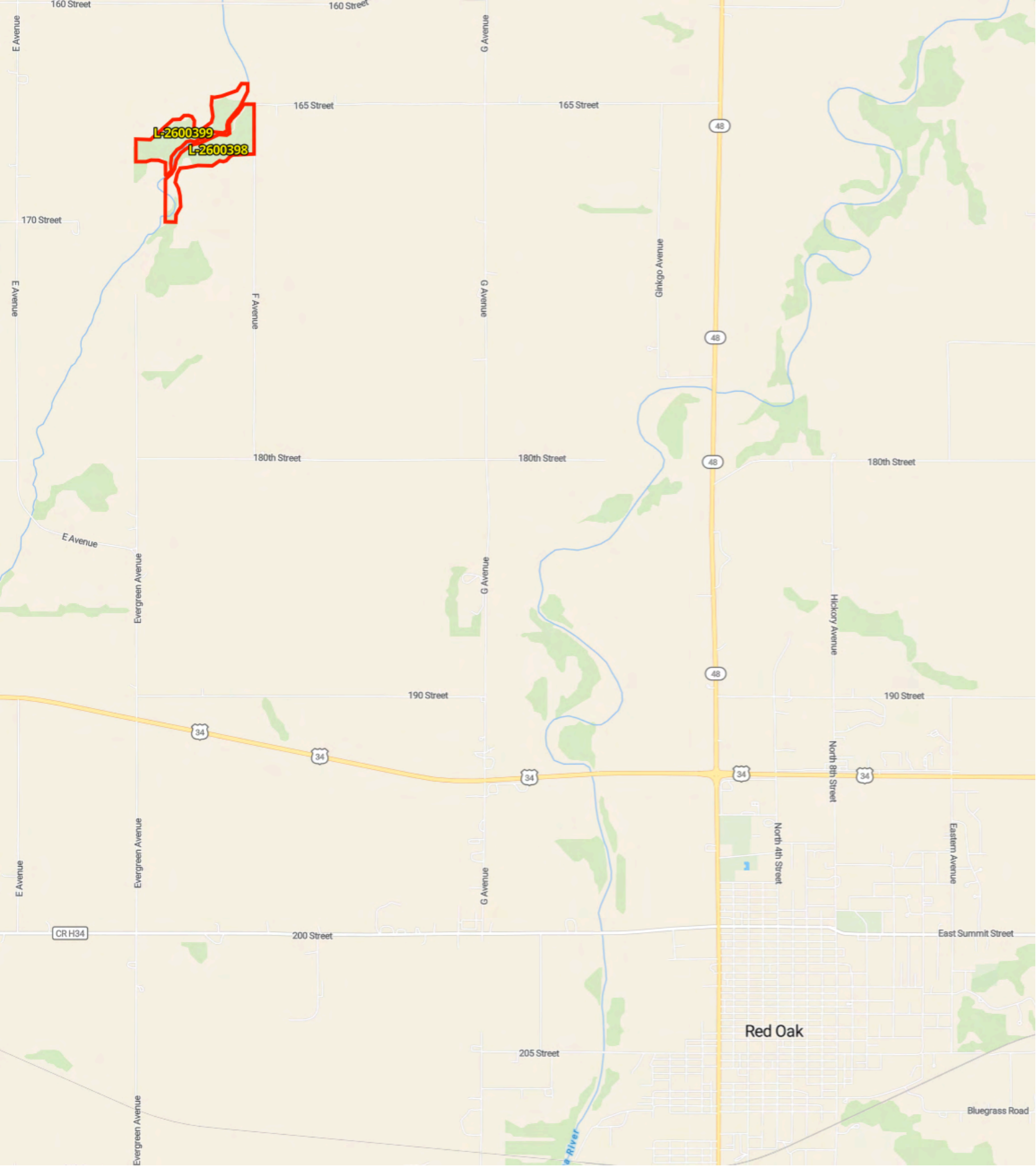
65.5 Acres



**Farmers National Company**

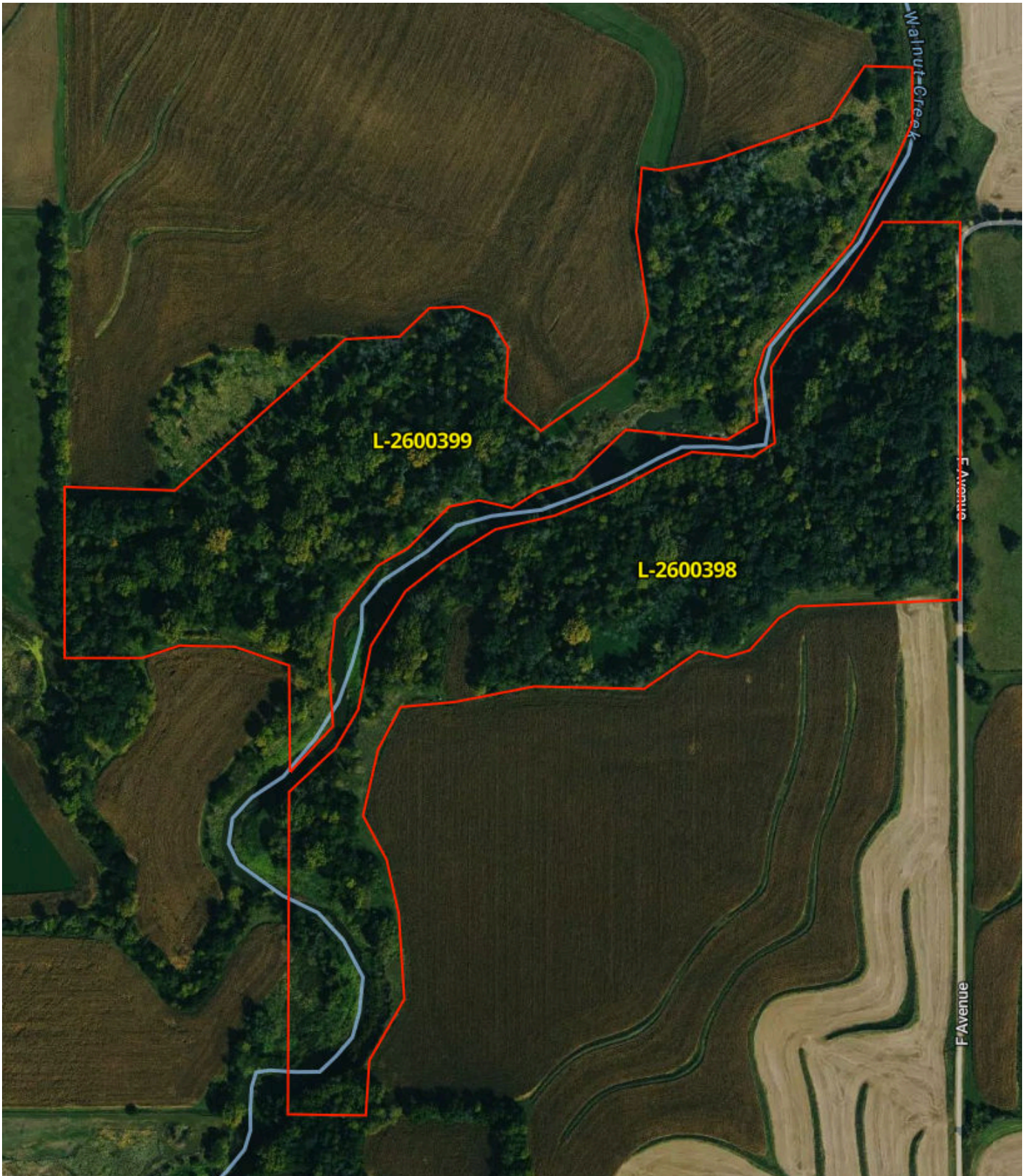
### Comments

Montgomery County, IA



# Property Overview

65.5 Acres, 2 Boundaries

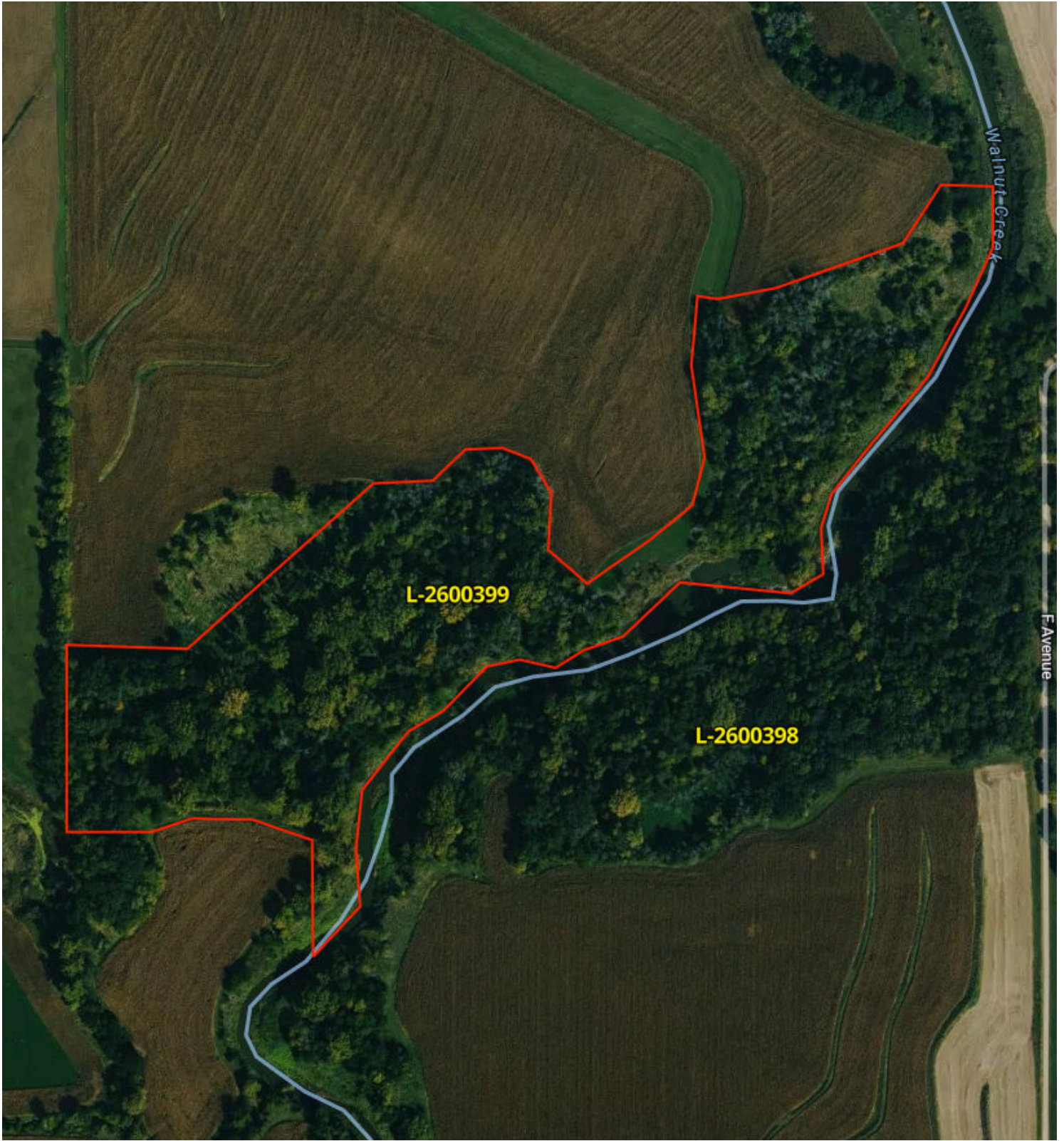


# Property Overview



Montgomery County, IA

32.1 Acres, Boundary 1 of 2



Montgomery County, IA  
Township: 072N

Locations  
01 72N 39W

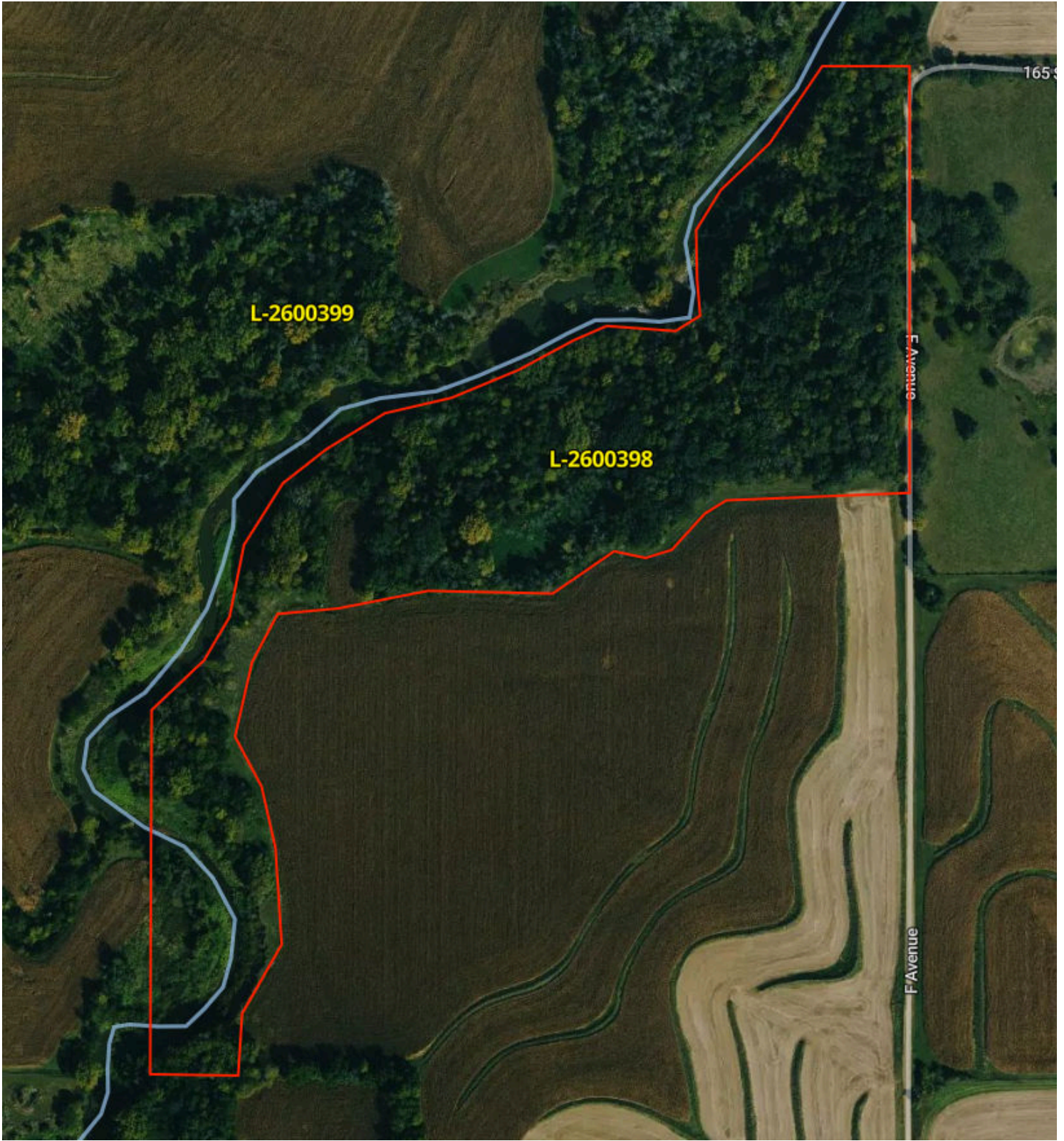
Acres  
32.07

# Property Overview



Montgomery County, IA

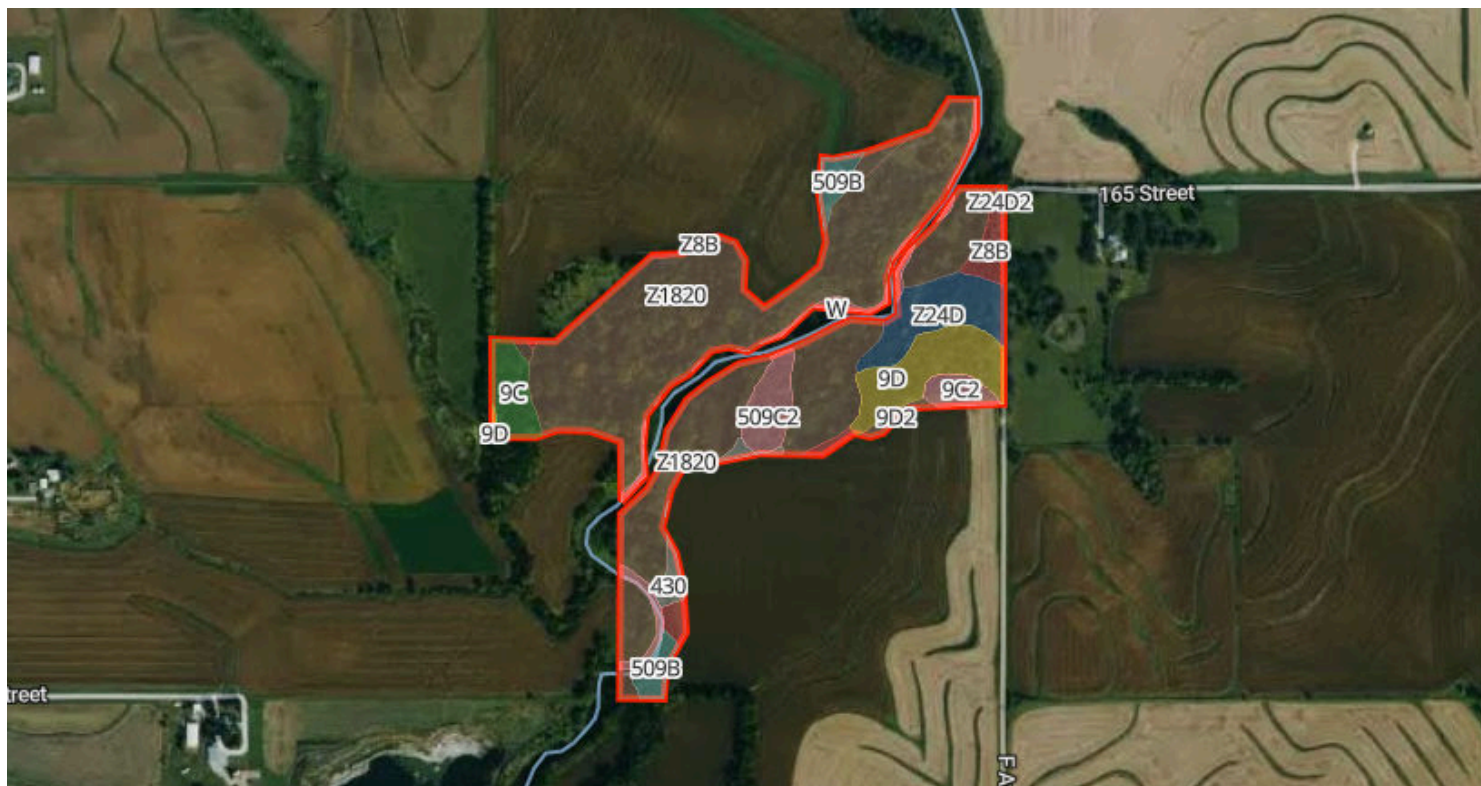
33.5 Acres, Boundary 2 of 2



Montgomery County, IA  
Township: 072N

Locations  
01 72N 39W

Acres  
33.48



**83/100 CSR2**

	Code	Soil Description	% of Selection	Acres	Non-IRR Class	IRR Class	State Score (CSR2)
●	Z1820	Dockery-Quiver silt loams, deep loess, 0 to 2 percent slopes,...	66.1%	43.3	2w	--	87
●	9D	Marshall silty clay loam, 9 to 14 percent slopes	7.3%	4.8	3e	--	64
●	Z24D	Shelby loam, deep loess, 9 to 14 percent slopes	6.5%	4.2	3e	--	54
●	509...	Marshall silty clay loam, terrace, 5 to 9 percent slopes, eroded	3.4%	2.2	3e	--	88
●	9C	Marshall silty clay loam, 5 to 9 percent slopes	3.3%	2.2	3e	--	89

# Soils



65.5 Acres, 2 Boundaries

	Code	Soil Description	% of Selection	Acres	Non-IRR Class	IRR Class	State Score (CSR2)
●	509B	Marshall silty clay loam, terrace, 2 to 5 percent slopes	3.0%	2	2e	--	94
●	Z8B	Judson silty clay loam, deep loess, 2 to 5 percent slopes	3.0%	2	2e	--	92
●	W	Water	2.5%	1.6	--	--	
●	9C2	Marshall silty clay loam, 5 to 9 percent slopes, eroded	1.8%	1.1	3e	--	87
●	9D2	Marshall silty clay loam, 9 to 14 percent slopes, eroded	1.5%	1	3e	--	61
●	430	Ackmore silt loam, 0 to 2 percent slopes, occasionally flooded	1.4%	0.9	2w	--	77
●	Z24...	Shelby clay loam, deep loess, 9 to 14 percent slopes, eroded	0.2%	0.1	3e	--	52

# Soils by Boundary



**86.8** / 100 CSR2

	Code	Soil Description	% of Selection	Acres	Non-IRR Class	IRR Class	State Score (CSR2)
●	Z1820	Dockery-Quiver silt loams, deep loess, 0 to 2 percent slopes,...	84.9%	27.2	2w	--	87
●	9C	Marshall silty clay loam, 5 to 9 percent slopes	6.8%	2.2	3e	--	89
●	509B	Marshall silty clay loam, terrace, 2 to 5 percent slopes	3.1%	1	2e	--	94
●	W	Water	2.5%	0.8	--	--	
●	9D2	Marshall silty clay loam, 9 to 14 percent slopes, eroded	1.9%	0.6	3e	--	61

# Soils

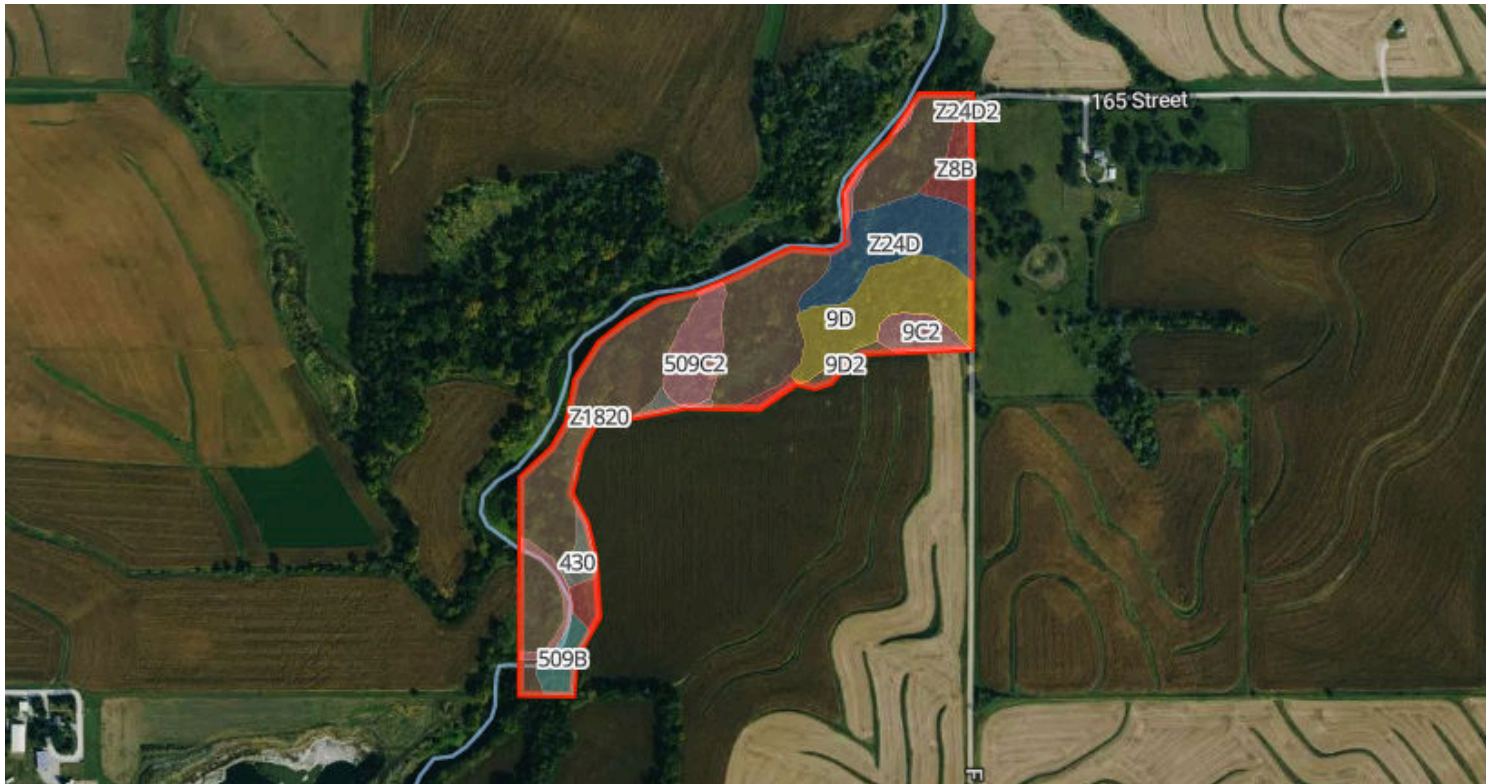


32.1 Acres, Boundary 1 of 2

	Code	Soil Description	% of Selection	Acres	Non-IRR Class	IRR Class	State Score (CSR2)
●	Z8B	Judson silty clay loam, deep loess, 2 to 5 percent slopes	0.4%	0.1	2e	--	92
●	9D	Marshall silty clay loam, 9 to 14 percent slopes	0.2%	0.1	3e	--	64

# Soils by Boundary

33.5 Acres, Boundary 2 of 2



**79.3**/100 CSR2

	Code	Soil Description	% of Selection	Acres	Non-IRR Class	IRR Class	State Score (CSR2)
●	Z1820	Dockery-Quiver silt loams, deep loess, 0 to 2 percent slopes,...	48.1%	16.1	2w	--	87
●	9D	Marshall silty clay loam, 9 to 14 percent slopes	14.1%	4.7	3e	--	64
●	Z24D	Shelby loam, deep loess, 9 to 14 percent slopes	12.6%	4.2	3e	--	54
●	509...	Marshall silty clay loam, terrace, 5 to 9 percent slopes, eroded	6.6%	2.2	3e	--	88
●	Z8B	Judson silty clay loam, deep loess, 2 to 5 percent slopes	5.5%	1.9	2e	--	92

# Soils

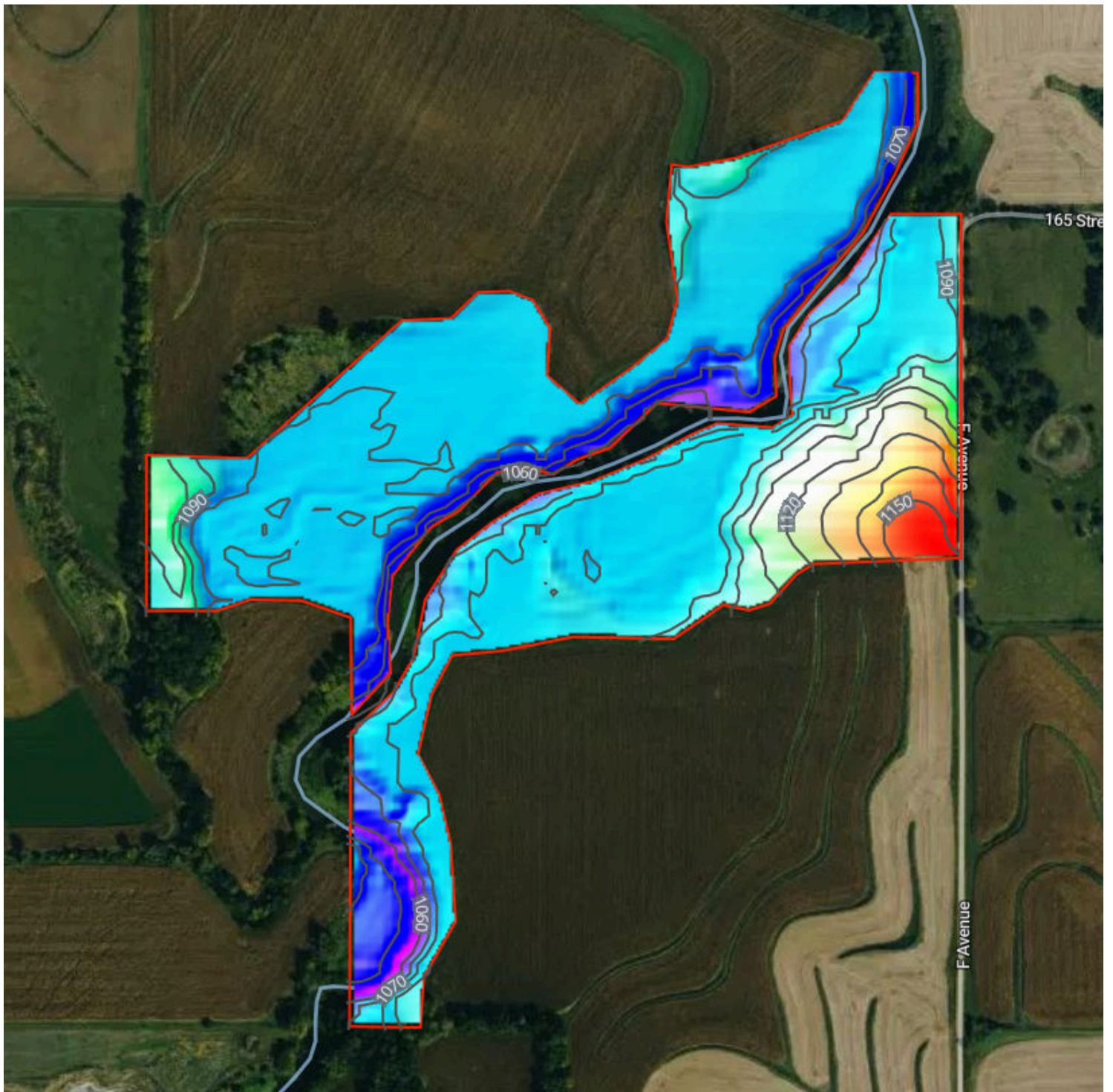


33.5 Acres, Boundary 2 of 2

	Code	Soil Description	% of Selection	Acres	Non-IRR Class	IRR Class	State Score (CSR2)
●	9C2	Marshall silty clay loam, 5 to 9 percent slopes, eroded	3.4%	1.1	3e	--	87
●	509B	Marshall silty clay loam, terrace, 2 to 5 percent slopes	2.9%	1	2e	--	94
●	430	Ackmore silt loam, 0 to 2 percent slopes, occasionally flooded	2.8%	0.9	2w	--	77
●	W	Water	2.5%	0.8	--	--	
●	9D2	Marshall silty clay loam, 9 to 14 percent slopes, eroded	1.1%	0.4	3e	--	61
●	Z24...	Shelby clay loam, deep loess, 9 to 14 percent slopes, eroded	0.3%	0.1	3e	--	52

# Elevation

65.5 Acres, 2 Boundaries



1,053.8 feet

1,159.7 feet

Source: USGS 3 Meter Dem

Interval: 10 feet

Range: 105.9 feet

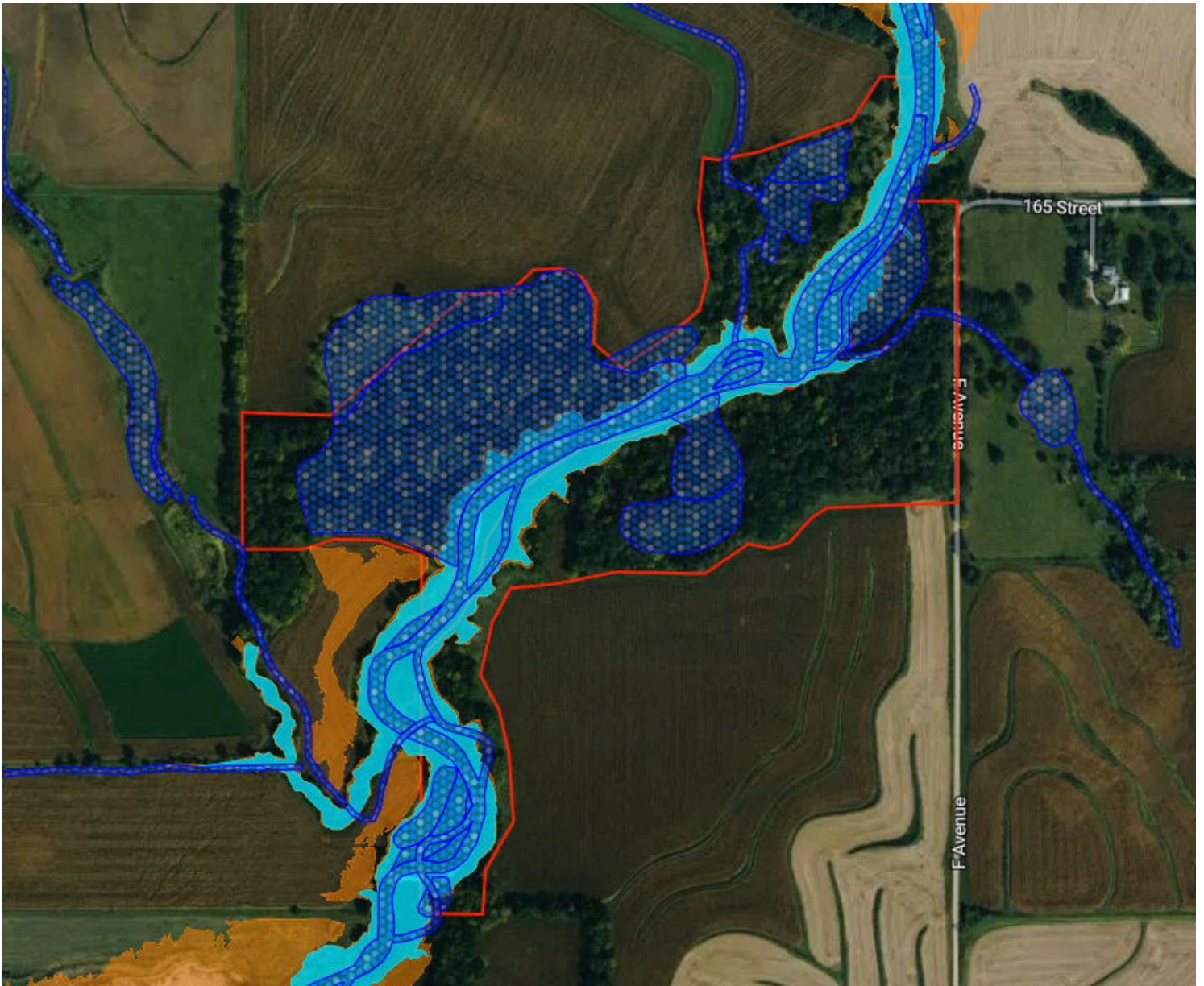
Min: 1053.8 feet

Max: 1159.7 feet









Slope: 7.4%

Min: 0%

Max: 54.6%



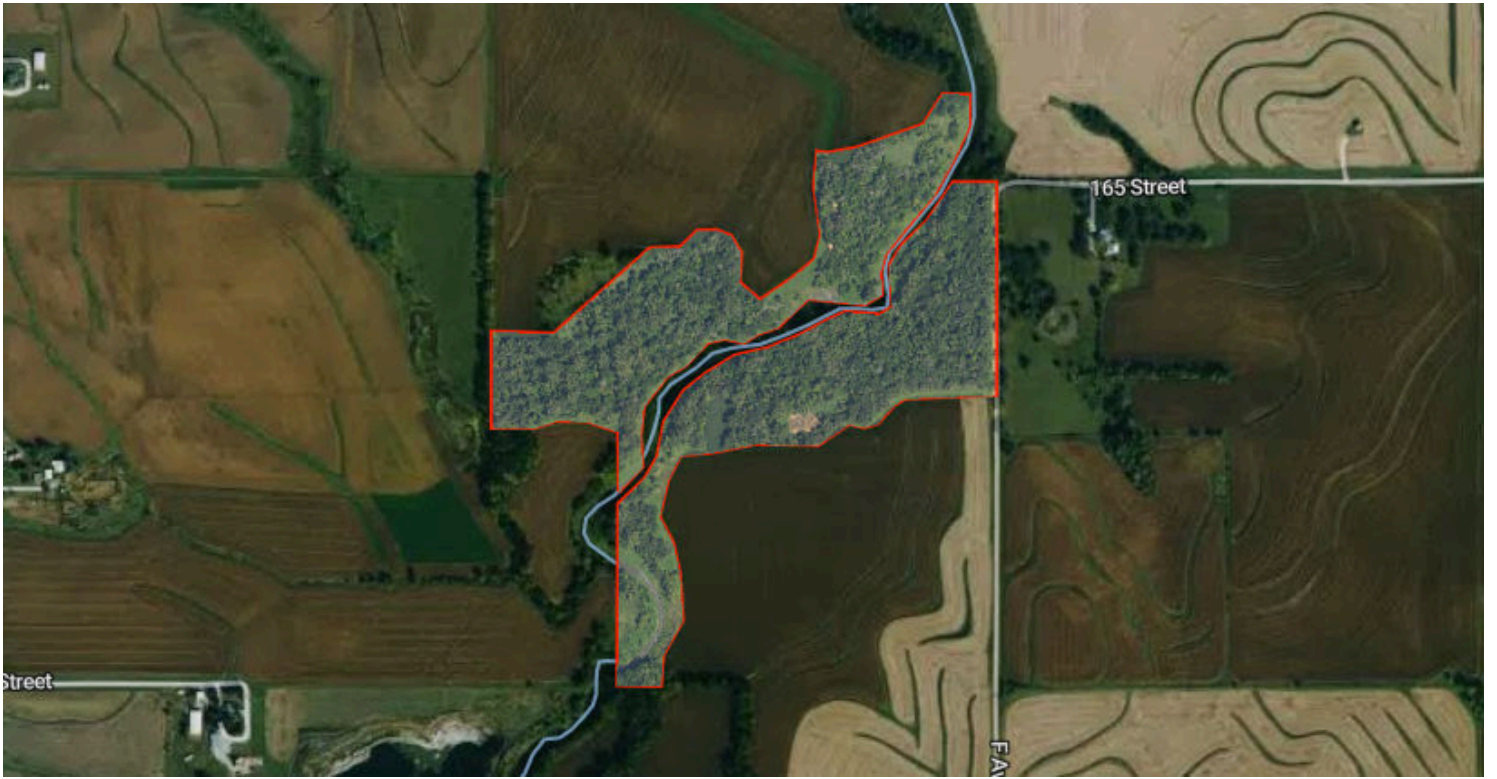
## Flood Zone Hazard

-  0.2% annual flood hazard
-  1% annual flood hazard
-  Future 1% annual flood hazard
-  Increased risk due to levee
-  Reduced risk due to levee
-  Regulatory Floodway
-  Special Floodway
-  Wetlands

# Historical Imagery

65.5 Acres, 2 Boundaries

2025



2023

