



L-2600412

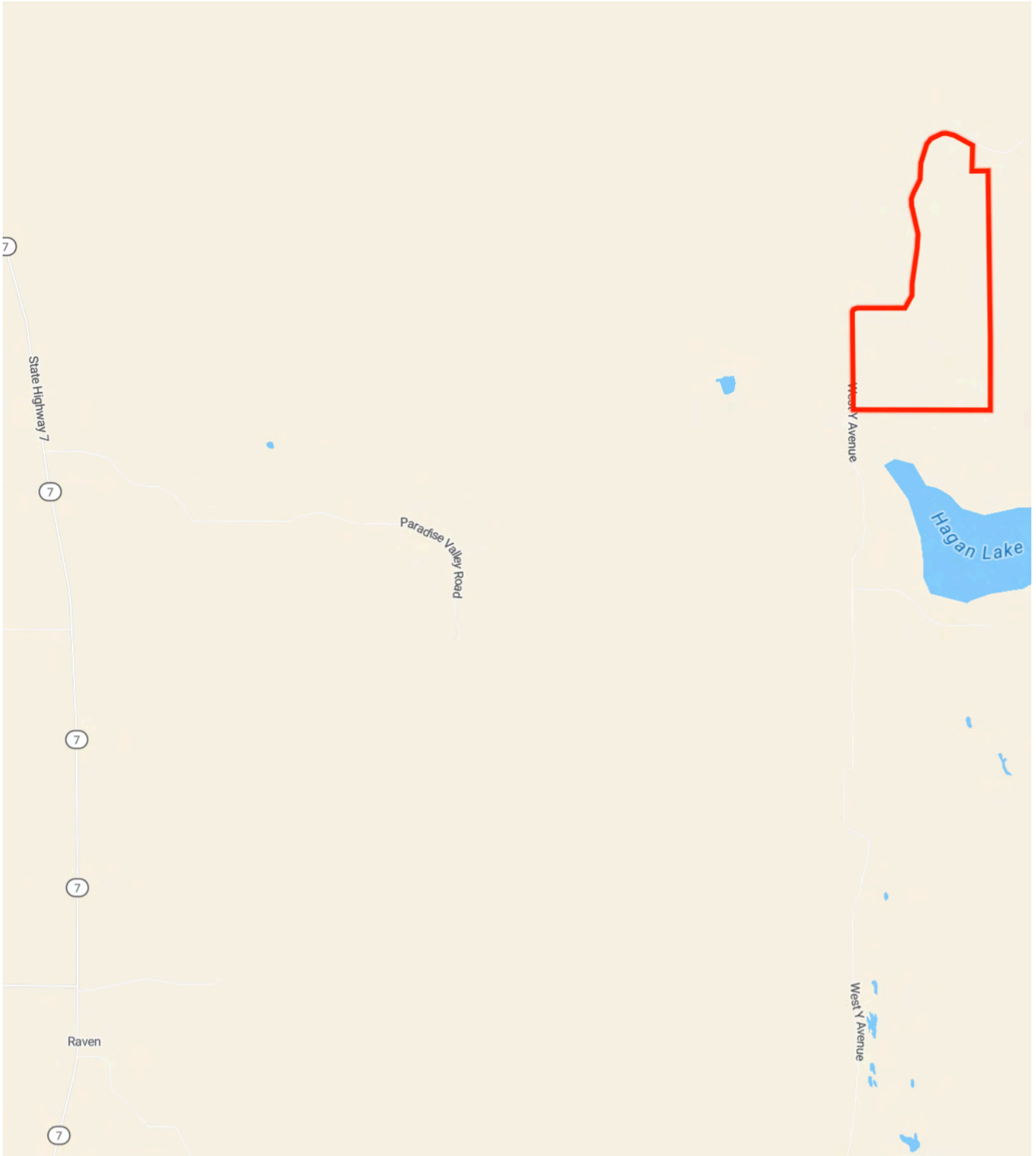
877.9 Acres



Farmers National Company

Comments

Brown County, NE



Property Overview



877.9 Acres, 1 Boundary



Property Overview



Brown County, NE

877.9 Acres, Boundary 1 of 1



Brown County, NE
Township: 028N

Locations
34 28N 21W

Acres
877.88

Soils

877.9 Acres, 1 Boundary



	Code	Soil Description	% of Selection	Acres	Non-IRR Class	IRR Class
●	4751	Tryon loamy fine sand, frequently ponded, 0 to 3 percent slopes	24.2%	212.8	5w	--
●	4691	Marlake mucky peat	18.3%	160.3	8w	--
●	4545	Els-Ipage fine sands, 0 to 3 percent slopes	17.6%	154.9	6w	4w
●	4563	Els-Tryon complex, 0 to 3 percent slopes	15.6%	136.5	4w	4w
●	4858	Valentine-Els complex, moist, 0 to 9 percent slopes	10.3%	90.3	6e	4e

Soils

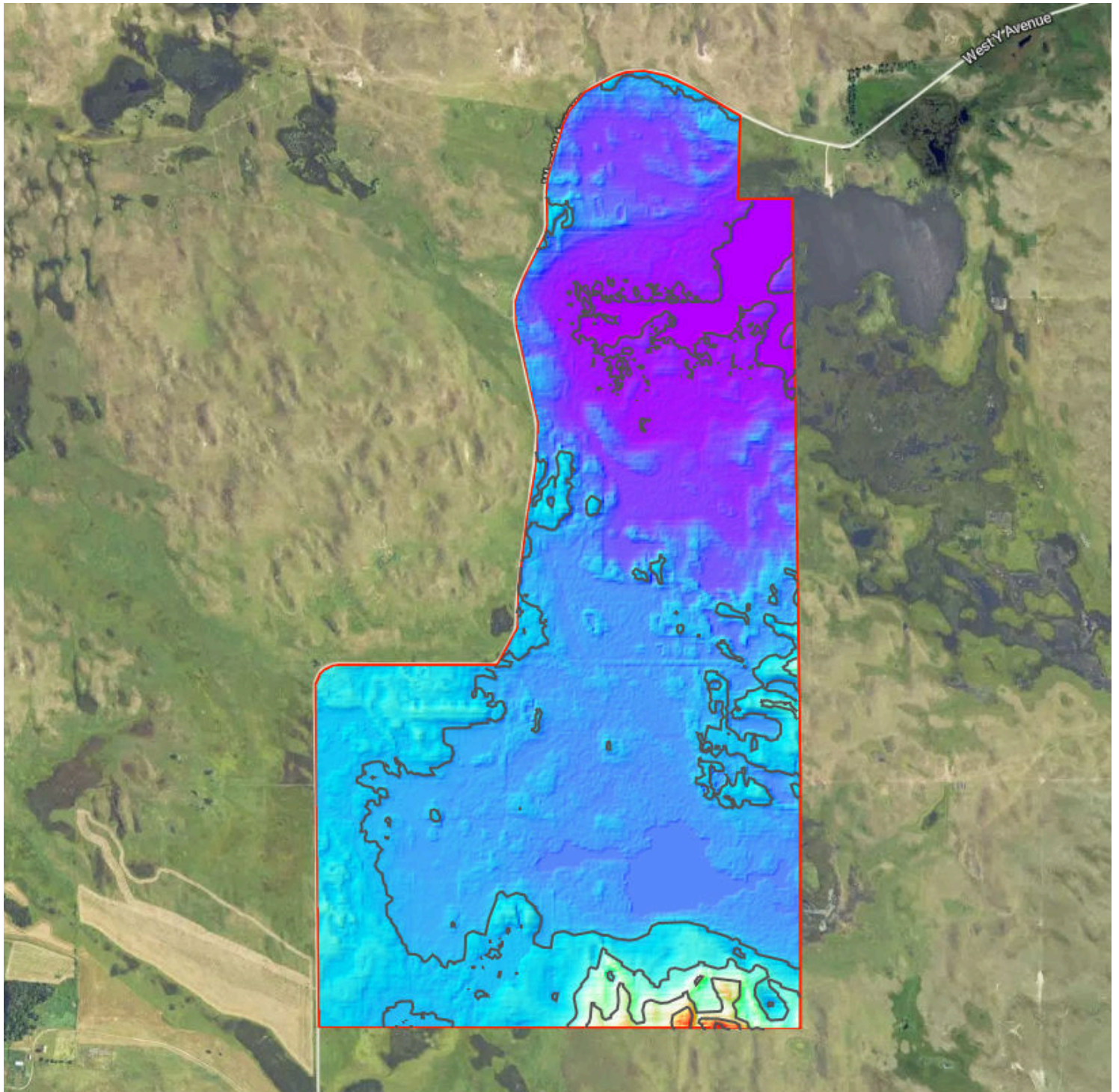


877.9 Acres, 1 Boundary

	Code	Soil Description	% of Selection	Acres	Non-IRR Class	IRR Class
●	4492	Dunday loamy fine sand, 3 to 9 percent slopes, moist	4.6%	40.7	6e	--
●	4746	Tryon loamy fine sand, 0 to 3 percent slopes	3.8%	33.3	5w	--
●	4806	Valentine fine sand, rolling, 9 to 24 percent slopes, moist	1.5%	13.5	6e	--
●	4641	lpage fine sand, 0 to 3 percent slopes	1.3%	11.4	6e	--
●	4662	Loup fine sandy loam, 0 to 1 percent slopes	1.3%	11.5	5w	--
●	4820	Valentine loamy fine sand, 3 to 9 percent slopes, moist	1.2%	10.3	6e	4e
●	4792	Valentine fine sand, 3 to 9 percent slopes, moist	0.3%	2.3	6e	4e

Elevation

877.9 Acres, 1 Boundary



2,579.0 feet

2,632.7 feet

Source: USGS 3 Meter Dem

Interval: 10 feet

Range: 53.7 feet

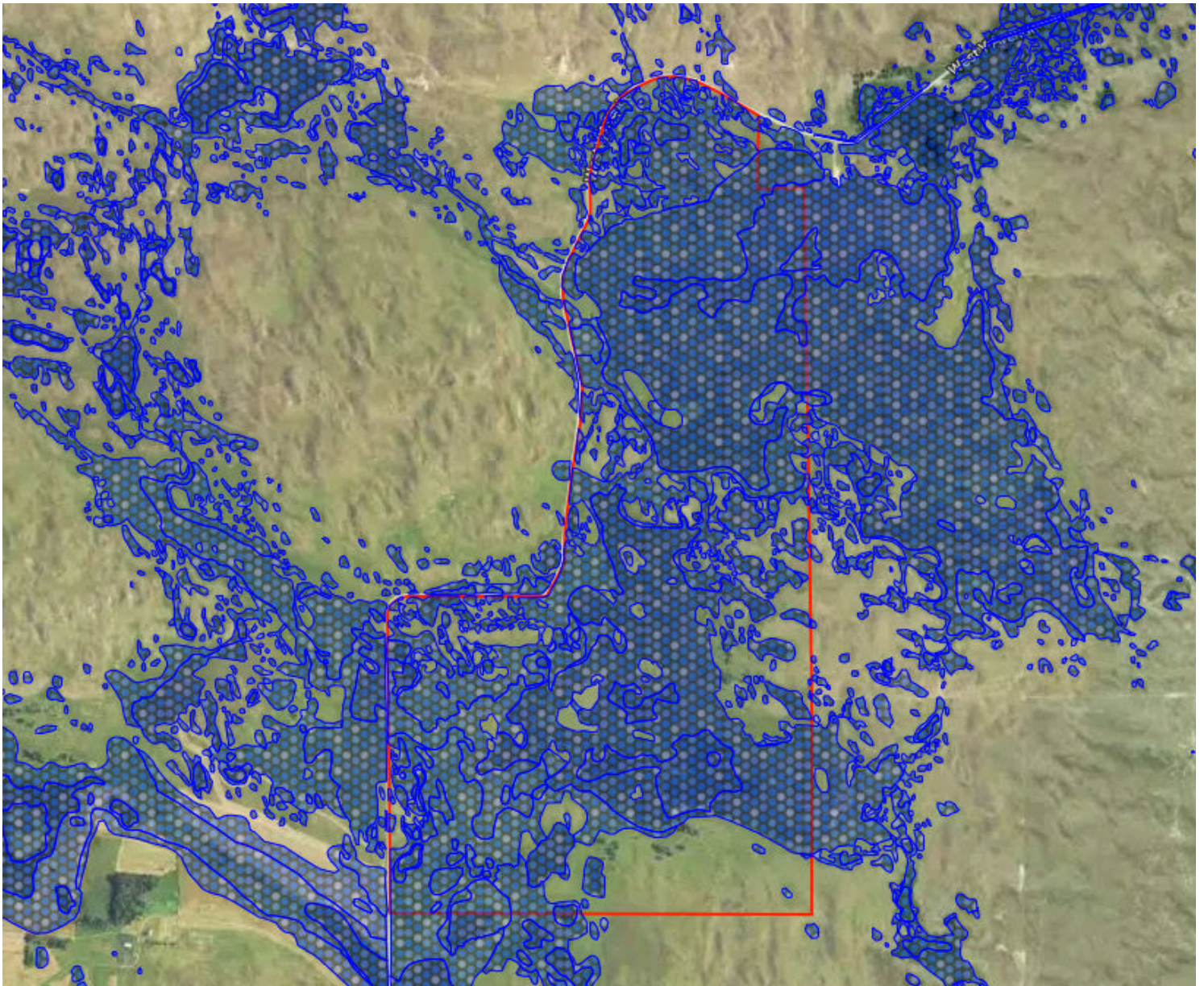
Min: 2579 feet

Max: 2632.7 feet








Slope: 1.5%

0

Max: 18.9%



Flood Zone Hazard

-  0.2% annual flood hazard
-  1% annual flood hazard
-  Future 1% annual flood hazard
-  Increased risk due to levee
-  Reduced risk due to levee
-  Regulatory Floodway
-  Special Floodway
- Wetlands