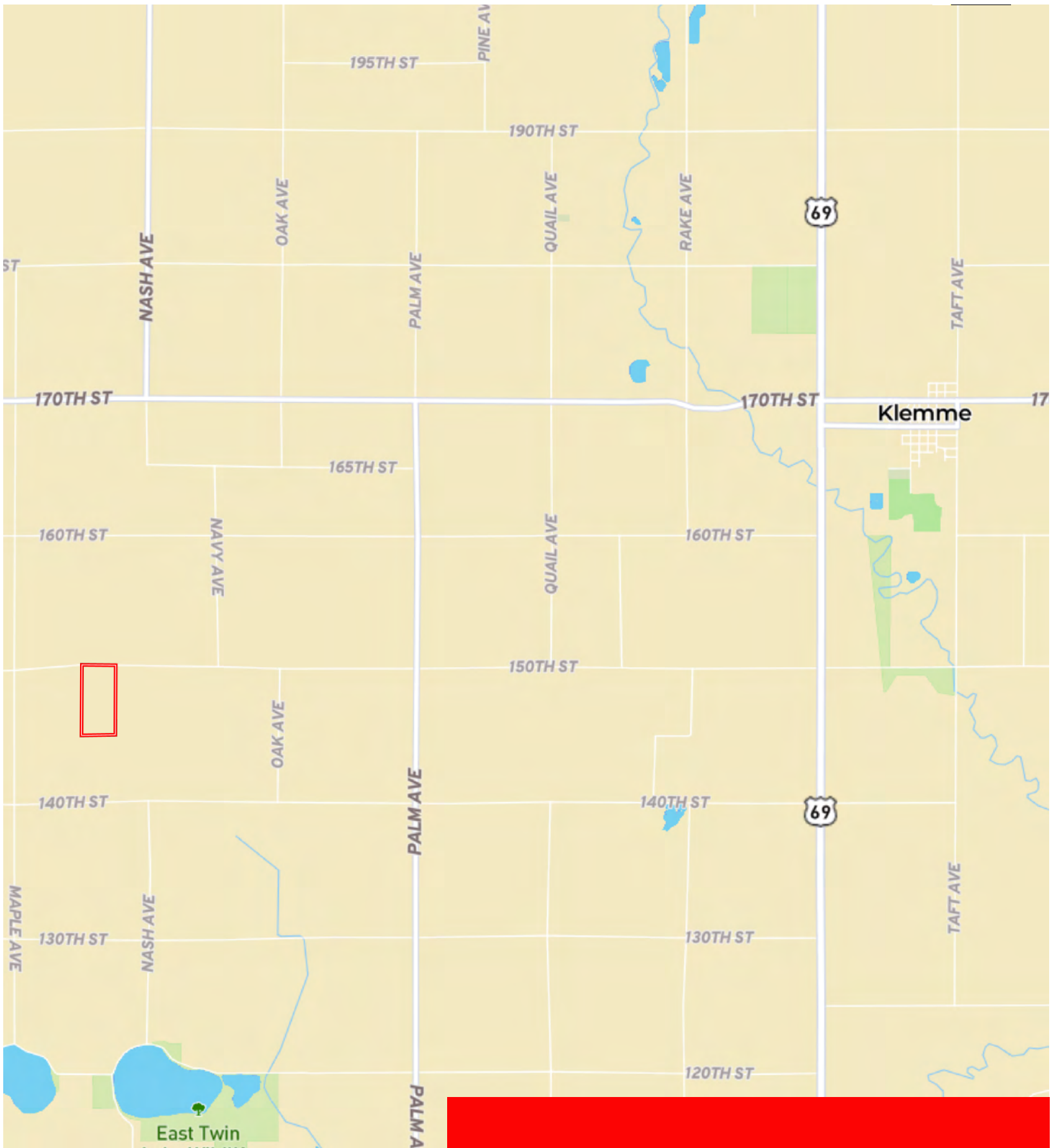
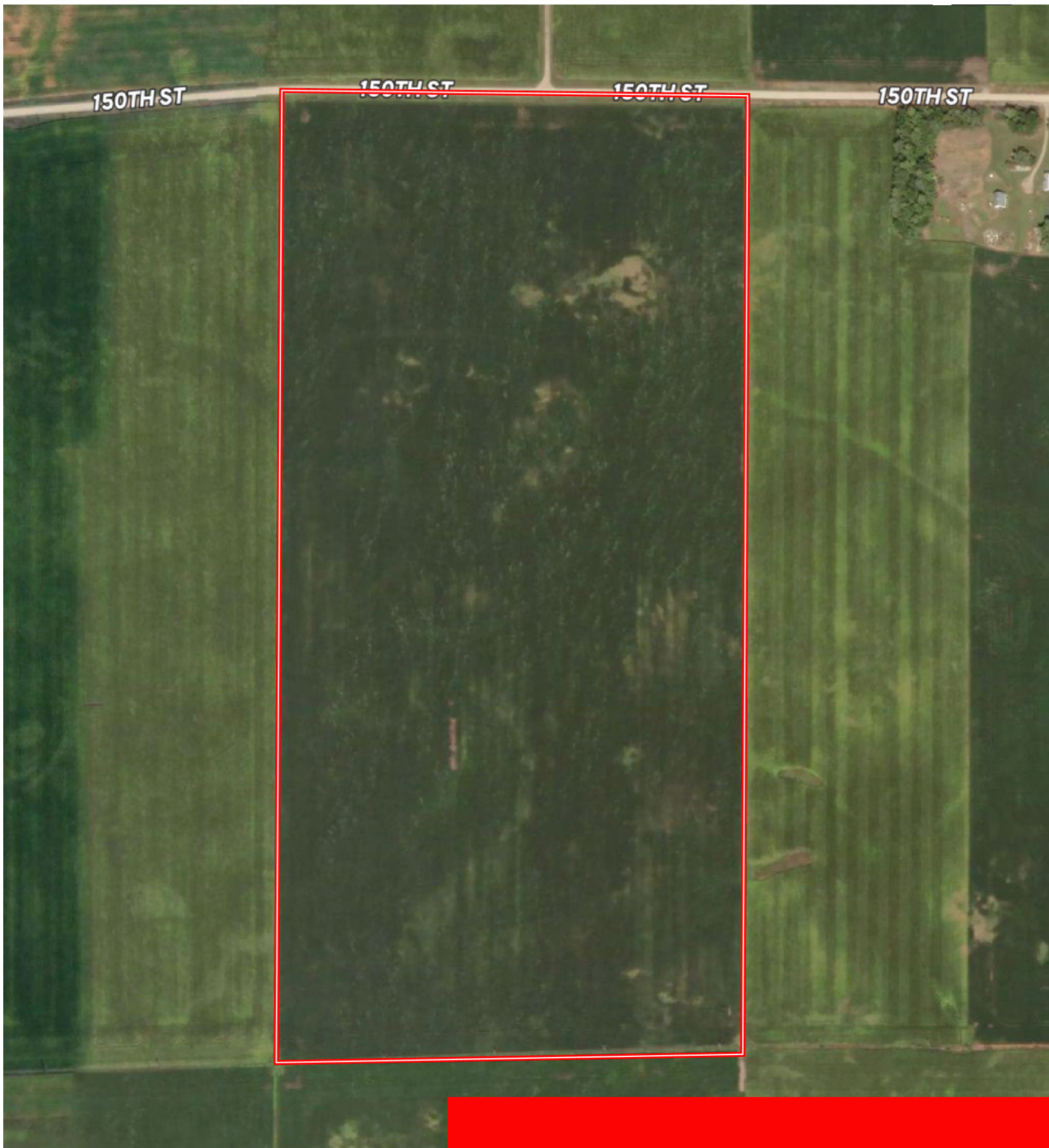


L-2600466

Hancock County, Iowa, 80 AC +/-



 Boundary



 Boundary



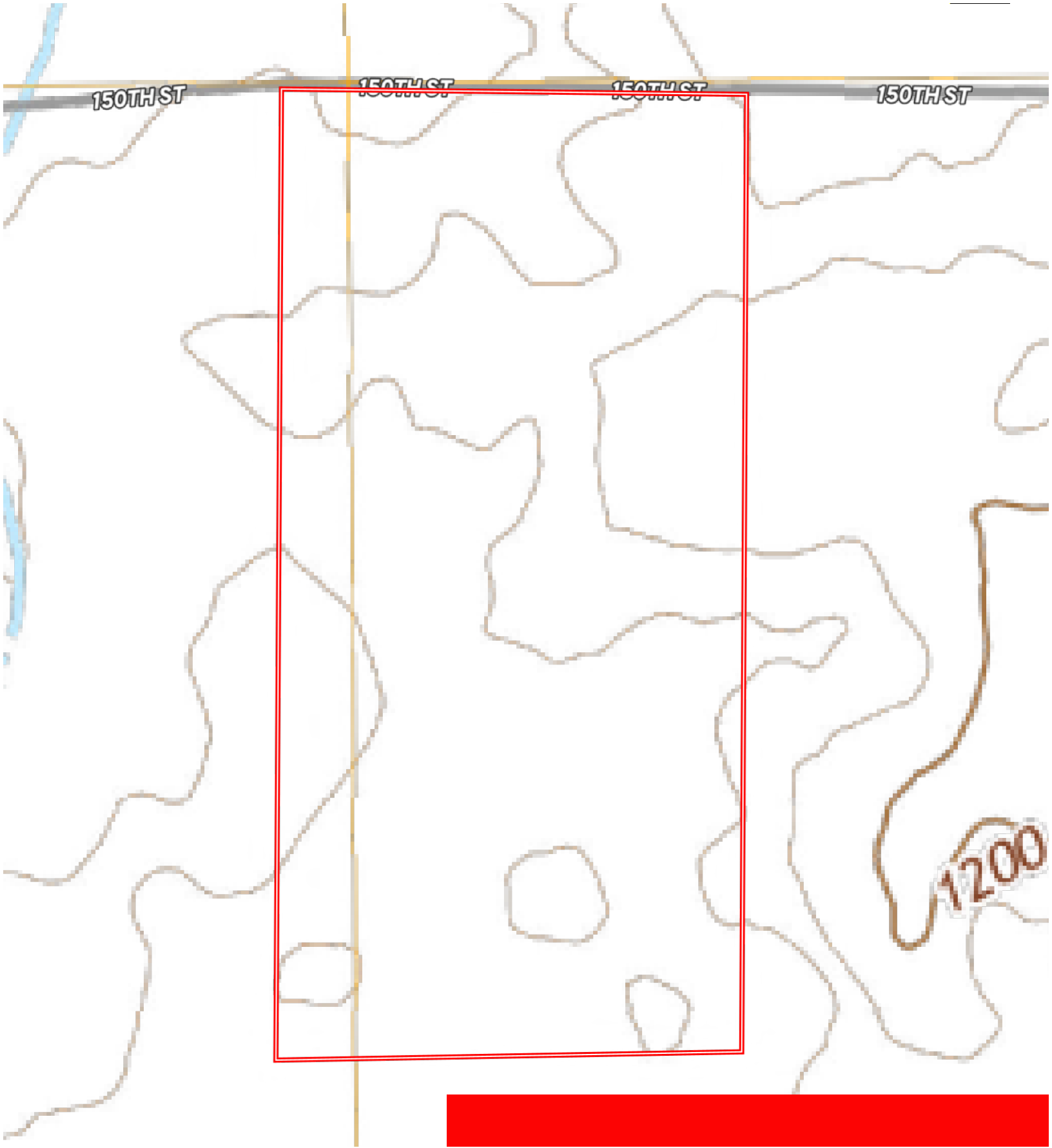
 Boundary

|  Boundary 81.04 ac

SOIL CODE	SOIL DESCRIPTION	ACRES	%	CSR2	CPI	NCCPI	CAP
138B	Clarion loam, 2 to 6 percent slopes	36.22	44.69	89.0	0	83	2e
107	Webster clay loam, 0 to 2 percent slopes	21.17	26.12	86.0	0	83	2w
55	Nicollet clay loam, 1 to 3 percent slopes	18.81	23.21	89.0	0	81	1
138C2	Clarion loam, 6 to 10 percent slopes, moderately eroded	4.59	5.66	83.0	0	69	3e
641C2	Clarion-Sunburg complex, 5 to 9 percent slopes, moderately eroded	0.25	0.31	71.0	0	65	3e
TOTALS		81.04(*)	100%	87.82	-	81.69	1.83

(\*) Total acres may differ in the second decimal compared to the sum of each acreage soil. This is due to a round error because we only show the acres of each soil with two decimal.





 Boundary