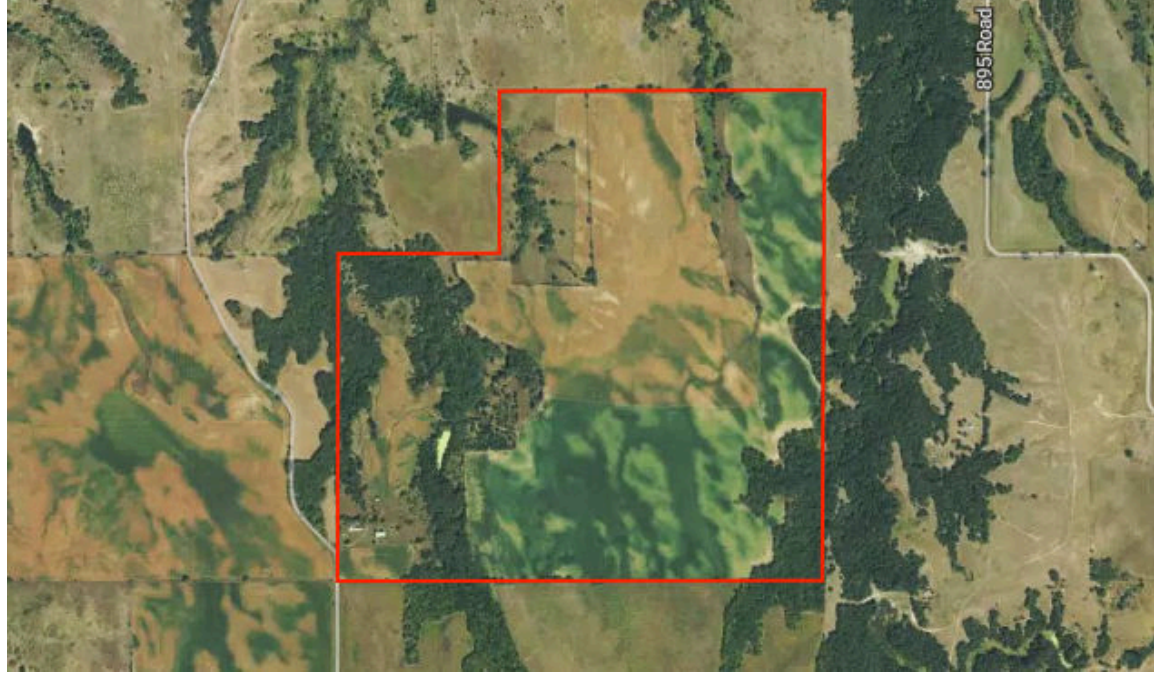


L-2600479



Farmers National Company

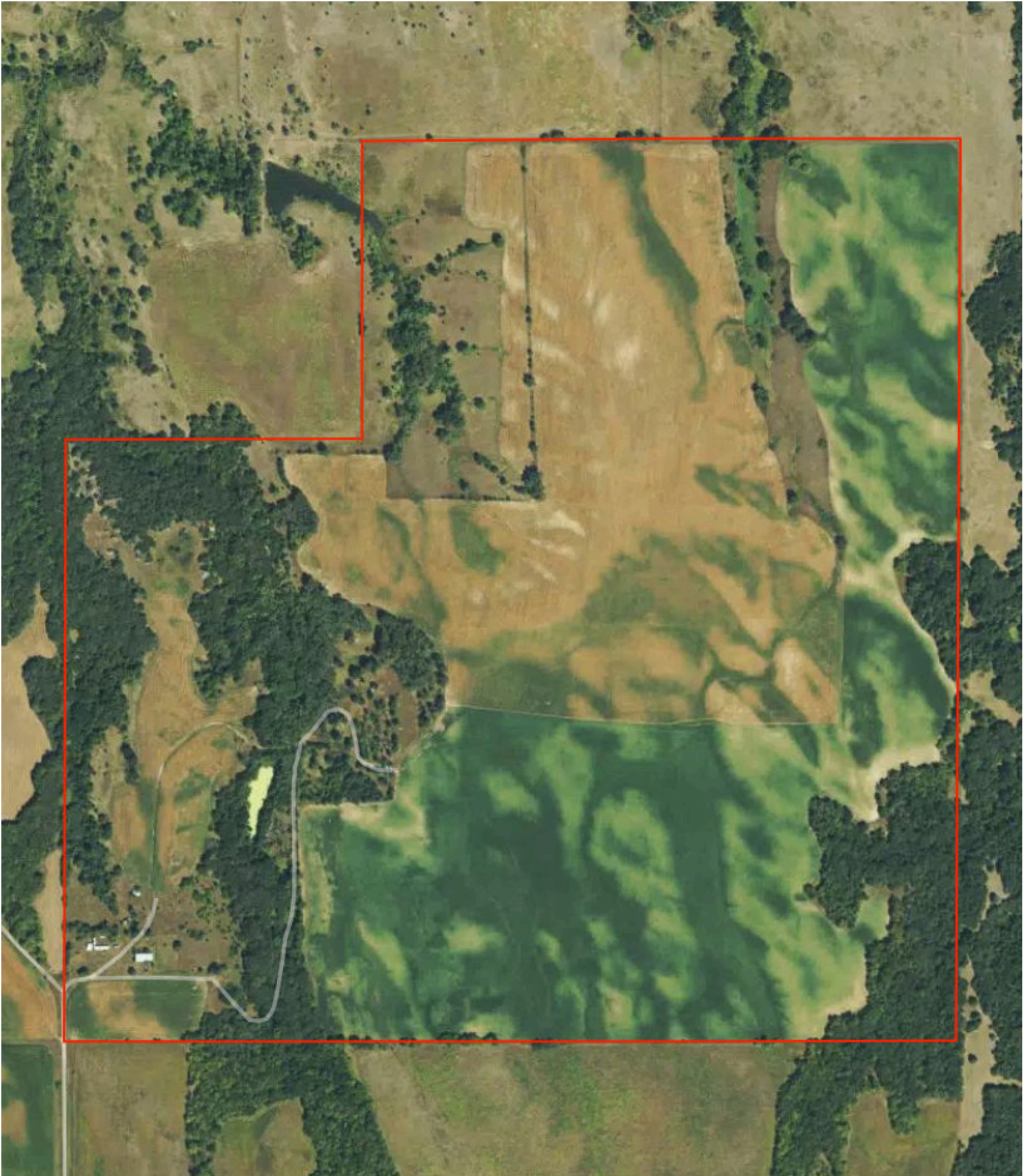
**Comments**

Knox County, NE 319.52 AC



# Property Overview

317.4 Acres, 1 Boundary

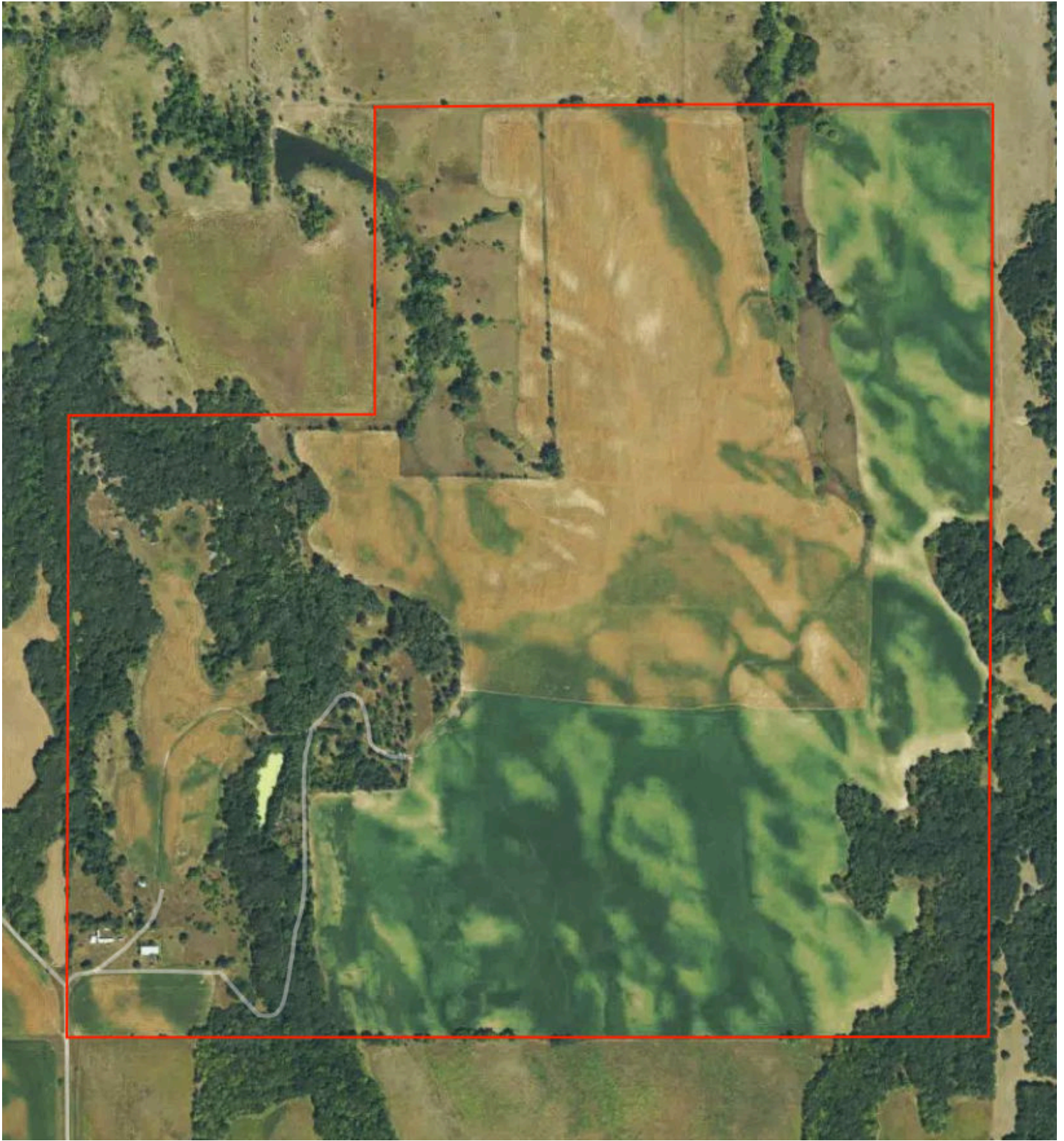


# Property Overview - Boundary



Knox County, NE

317.41 Acres, Boundary 1 of 1



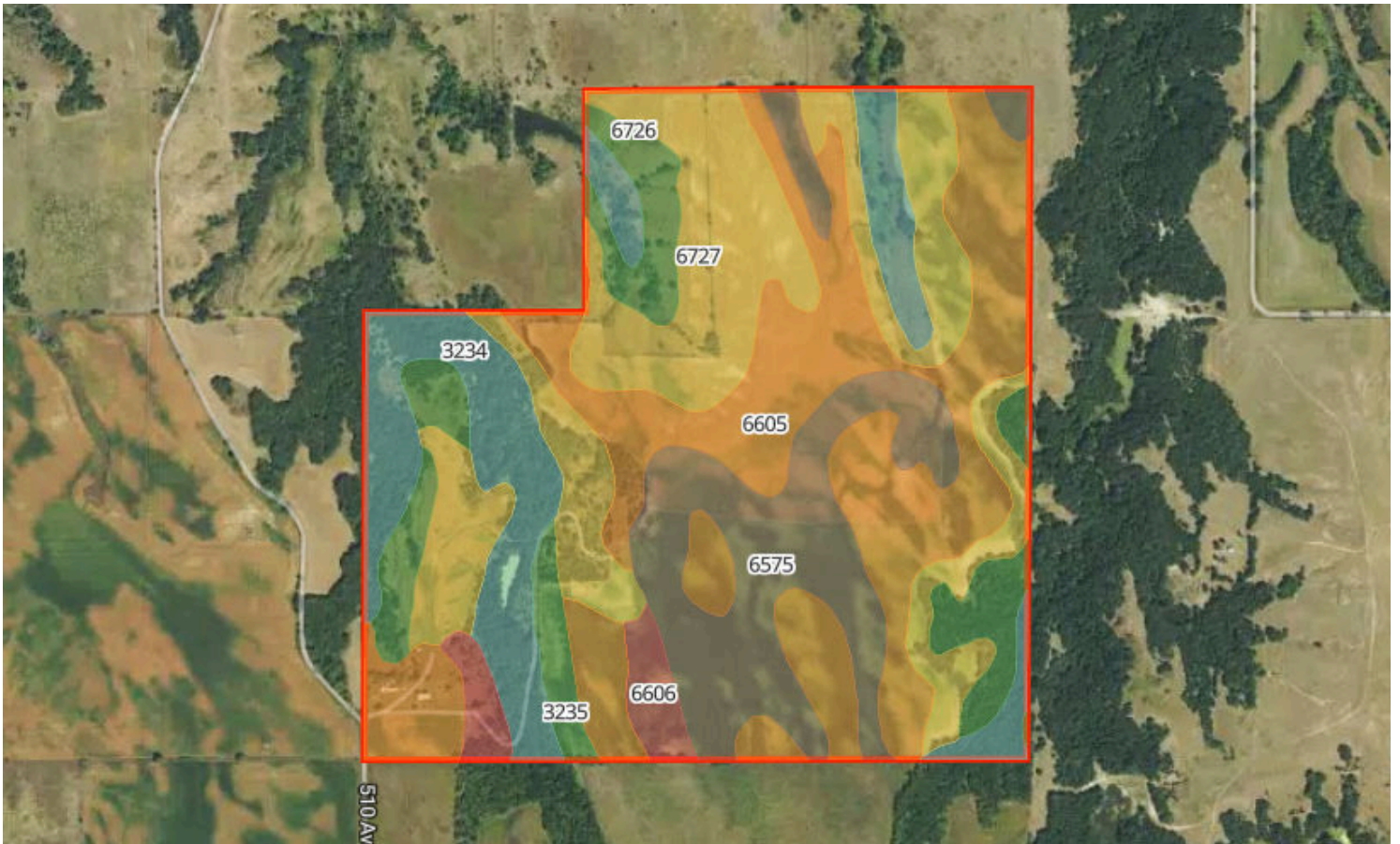
Knox County, NE  
Township: 033N

Locations  
31 33N 8W

Acres  
317.41

# Soils

317.4 Acres, 1 Boundary



	Code	Soil Description	% of Selection	Acres	Non-IRR Class	IRR Class
●	6605	Bazile loam, 2 to 6 percent slopes	30.4%	96.4	3e	3e
●	6727	Thurman fine sandy loam, 2 to 11 percent slopes	25.9%	82.1	4e	4e
●	6575	Trent silt loam, 0 to 2 percent slopes	16.2%	51.5	1	1
●	3234	Monowi-Bristow silty clays, 9 to 35 percent slopes	14.4%	45.6	6e	6e
●	6726	Thurman fine sandy loam, 11 to 30 percent slopes	7.4%	23.6	6e	--

# Soils

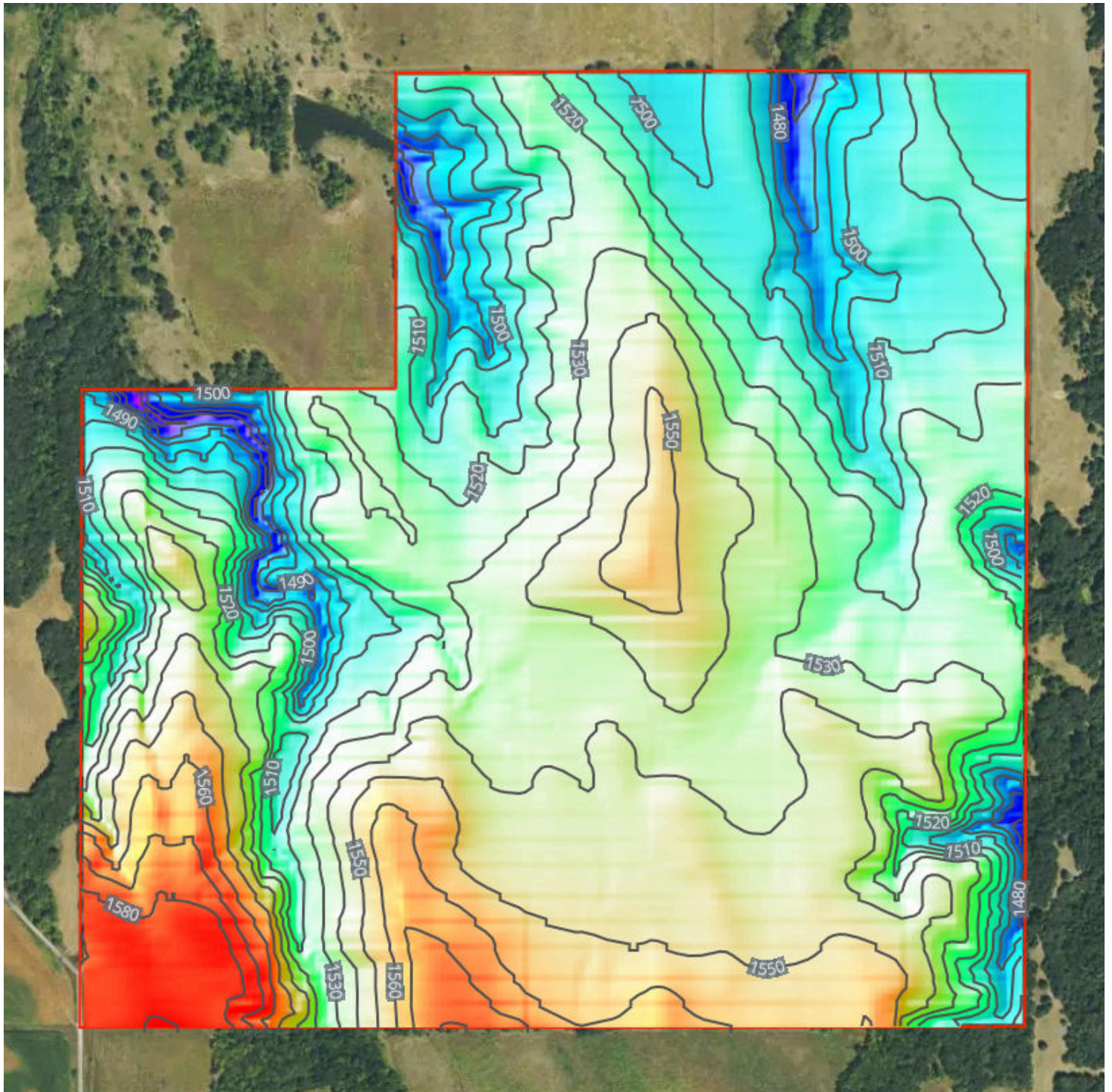


317.4 Acres, 1 Boundary

	Code	Soil Description	% of Selection	Acres	Non-IRR Class	IRR Class
●	6606	Bazile loam, 6 to 11 percent slopes	2.9%	9.1	4e	4e
●	3235	Monowi-Verdel silty clays, 6 to 15 percent slopes	2.8%	9	4e	4e

# Elevation

317.4 Acres, 1 Boundary



1,452.2 feet

1,591.8 feet

Source: USGS 3 Meter Dem

Interval: 10 feet

Range: 139.6 feet

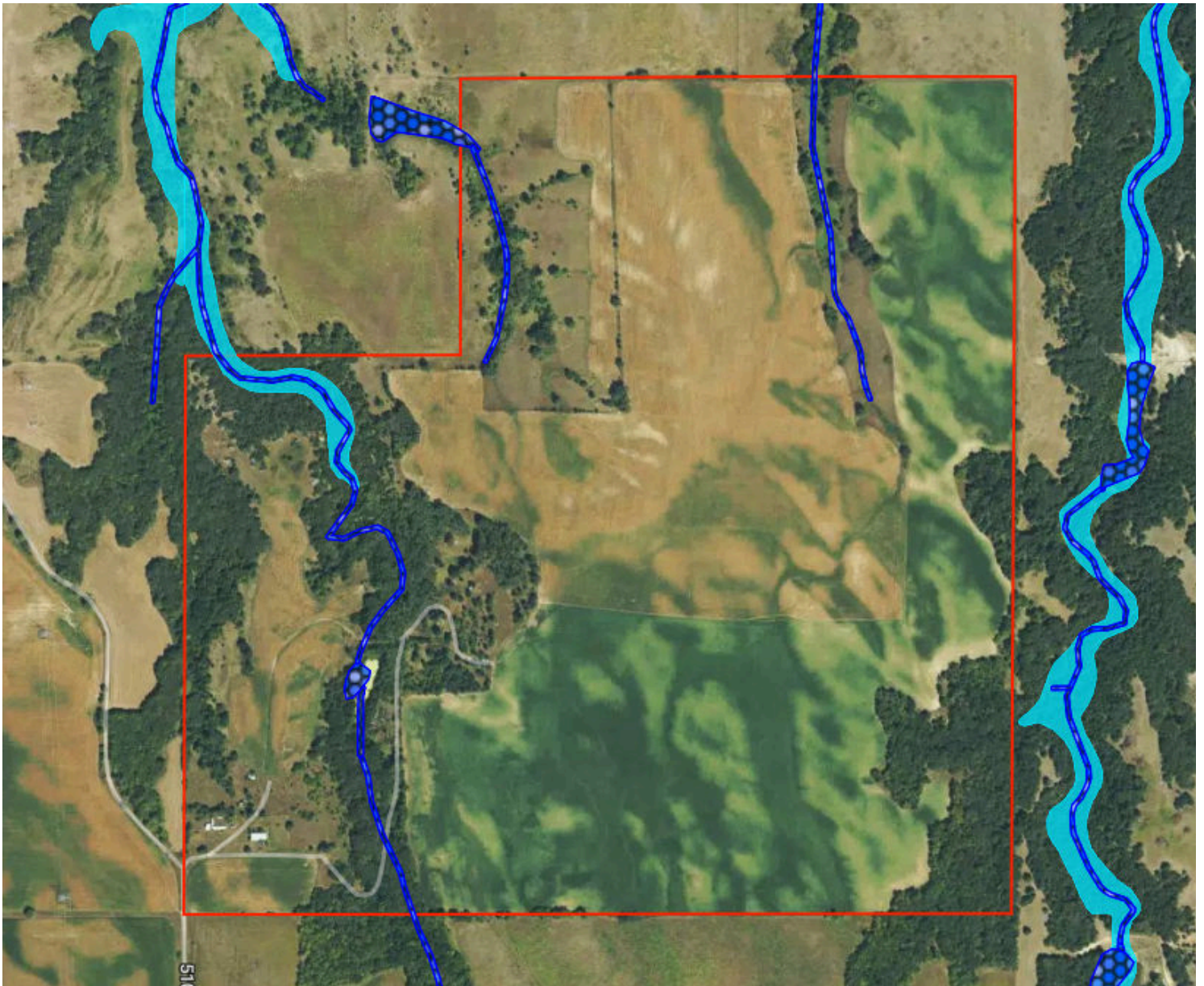
Min: 1452.2 feet

Max: 1591.8 feet









Slope: 7%

Min: 0%

Max: 56.5%



## Flood Zone Hazard

-  0.2% annual flood hazard
-  1% annual flood hazard
-  Future 1% annual flood hazard
-  Increased risk due to levee
-  Reduced risk due to levee
-  Regulatory Floodway
-  Special Floodway
-  Wetlands

