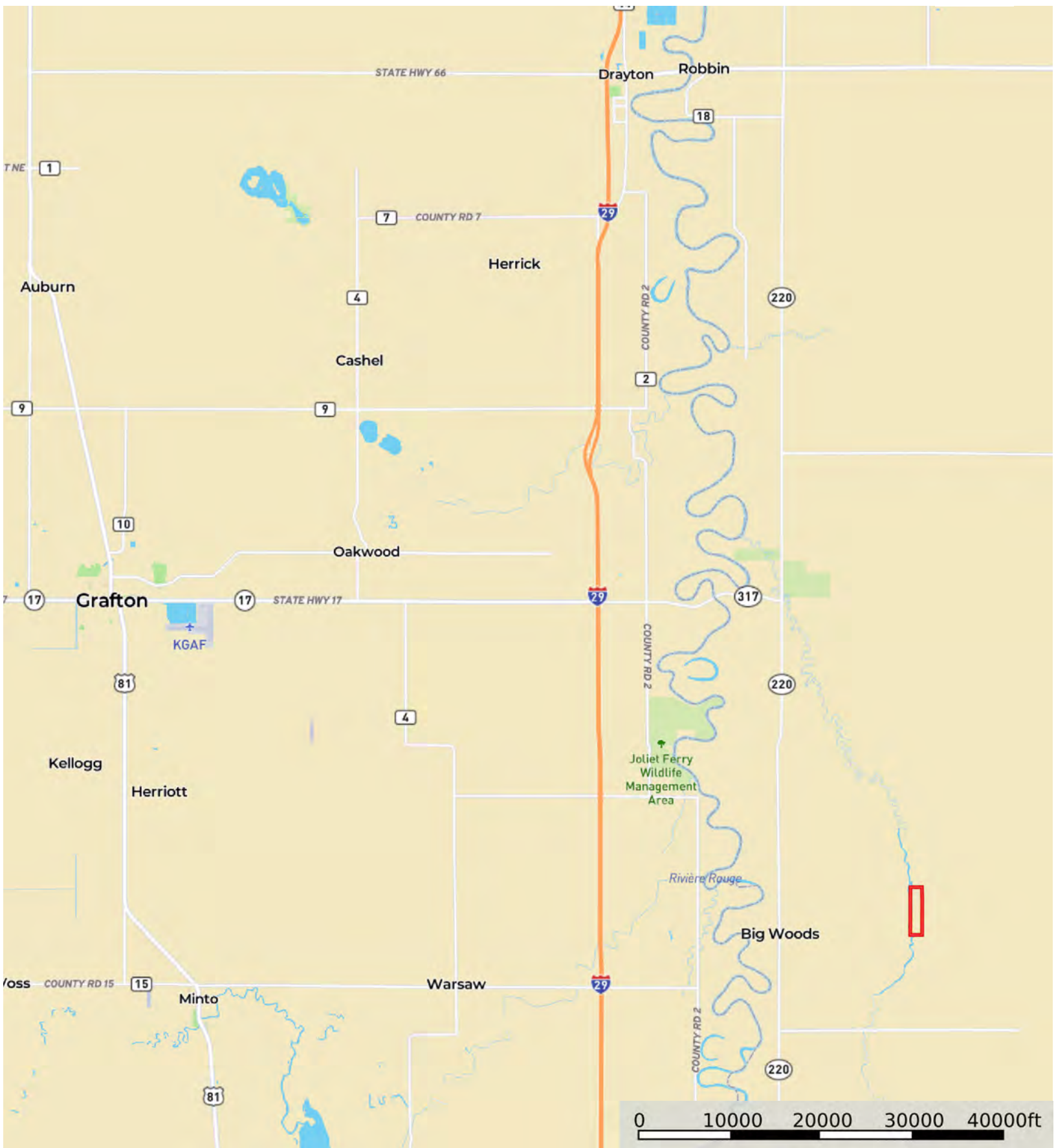


L2200583

Marshall County, Minnesota, 160 AC +/-



 Boundary

L2200583

Marshall County, Minnesota, 160 AC +/-



 Boundary

L2200583

Marshall County, Minnesota, 160 AC +/-



 Boundary

|  Boundary 158.08 ac

SOIL CODE	SOIL DESCRIPTION	ACRES	%	CPI	NCCPI	CAP
I124A	Colvin-Fargo complex, 0 to 1 percent slopes	122.07	77.22	90	65	2w
I16F	Fluvaquents,frequently flooded-Hapludolls complex, 0 to 30 percent slopes	25.2	15.94	20	32	6w
I478A	Lamoure silty clay loam, 0 to 1 percent slopes, occasionally flooded	9.28	5.87	78	73	2w
I248A	Wahpeton silty clay, 0 to 2 percent slopes, occasionally flooded	1.53	0.97	84	56	2e
TOTALS		158.09(*)	100%	78.07	60.12	2.64

(\*) Total acres may differ in the second decimal compared to the sum of each acreage soil. This is due to a round error because we only show the acres of each soil with two decimal.



L2200583

Marshall County, Minnesota, 160 AC +/-



 Boundary

|  Boundary 123.06 ac

SOIL CODE	SOIL DESCRIPTION	ACRES	%	CPI	NCCPI	CAP
1124A	Colvin-Fargo complex, 0 to 1 percent slopes	117.37	95.38	90	65	2w
116F	Fluvaquents,frequently flooded-Hapludolls complex, 0 to 30 percent slopes	3.11	2.53	20	32	6w
1478A	Lamoure silty clay loam, 0 to 1 percent slopes, occasionally flooded	2.58	2.1	78	73	2w
TOTALS		123.06(*)	100%	87.98	64.33	2.1

(\*) Total acres may differ in the second decimal compared to the sum of each acreage soil. This is due to a round error because we only show the acres of each soil with two decimal.

### Capability Legend

Increased Limitations and Hazards

Decreased Adaptability and Freedom of Choice Users

Land, Capability

	1	2	3	4	5	6	7	8
'Wild Life'	•	•	•	•	•	•	•	•
Forestry	•	•	•	•	•	•	•	
Limited	•	•	•	•	•	•	•	
Moderate	•	•	•	•	•	•		
Intense	•	•	•	•	•			
Limited	•	•	•	•				
Moderate	•	•	•					
Intense	•	•						
Very Intense	•							

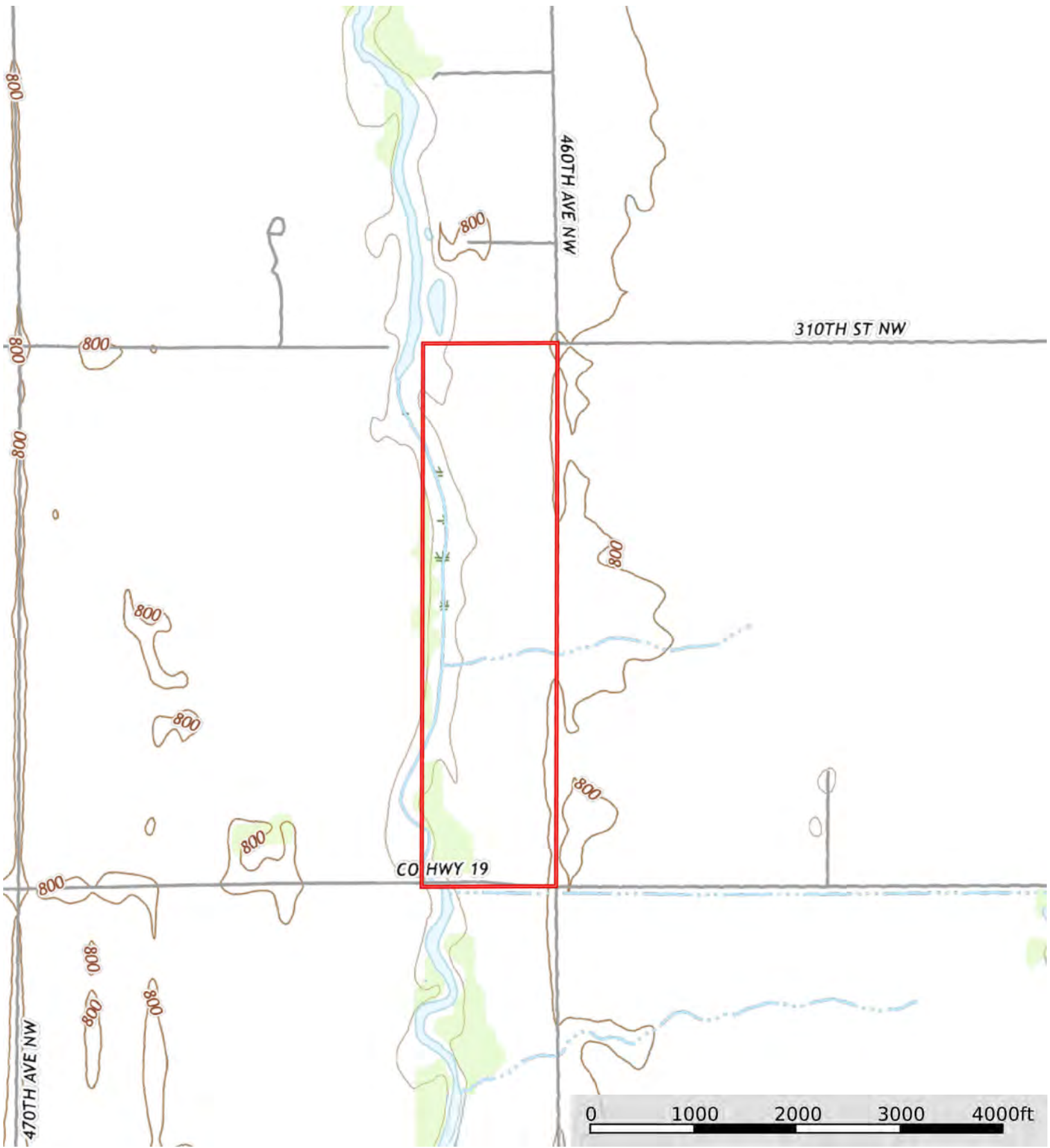
### Grazing Cultivation

(c) climatic limitations (e) susceptibility to erosion

(s) soil limitations within the rooting zone (w) excess of water

L2200583

Marshall County, Minnesota, 160 AC +/-



 Boundary