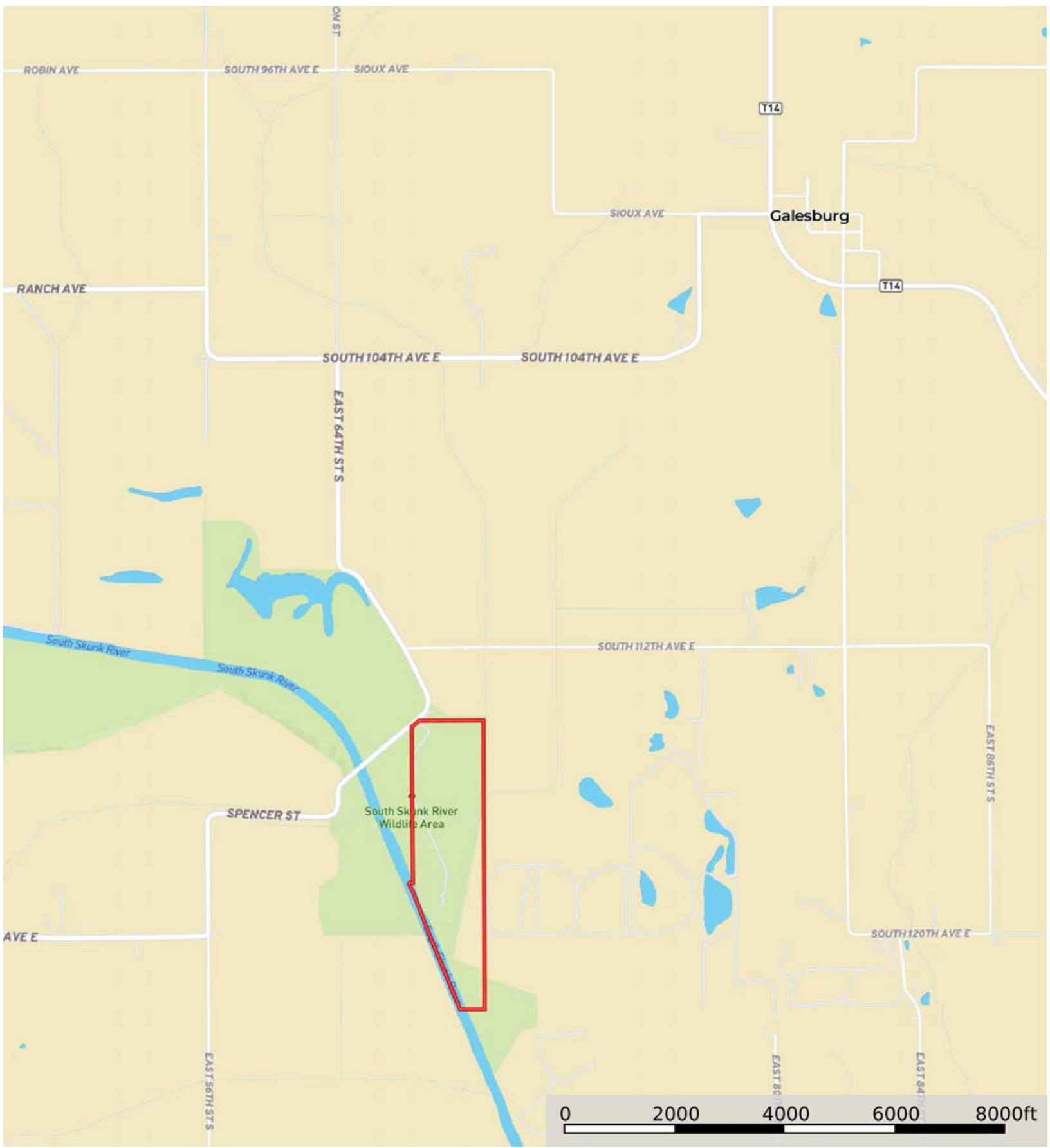


L2300077

Jasper County, Iowa, 138 AC +/-



 Boundary

L2300077

Jasper County, Iowa, 138 AC +/-



 Boundary

L2300077

Jasper County, Iowa, 138 AC +/-



 Boundary

Boundary 137.06 ac

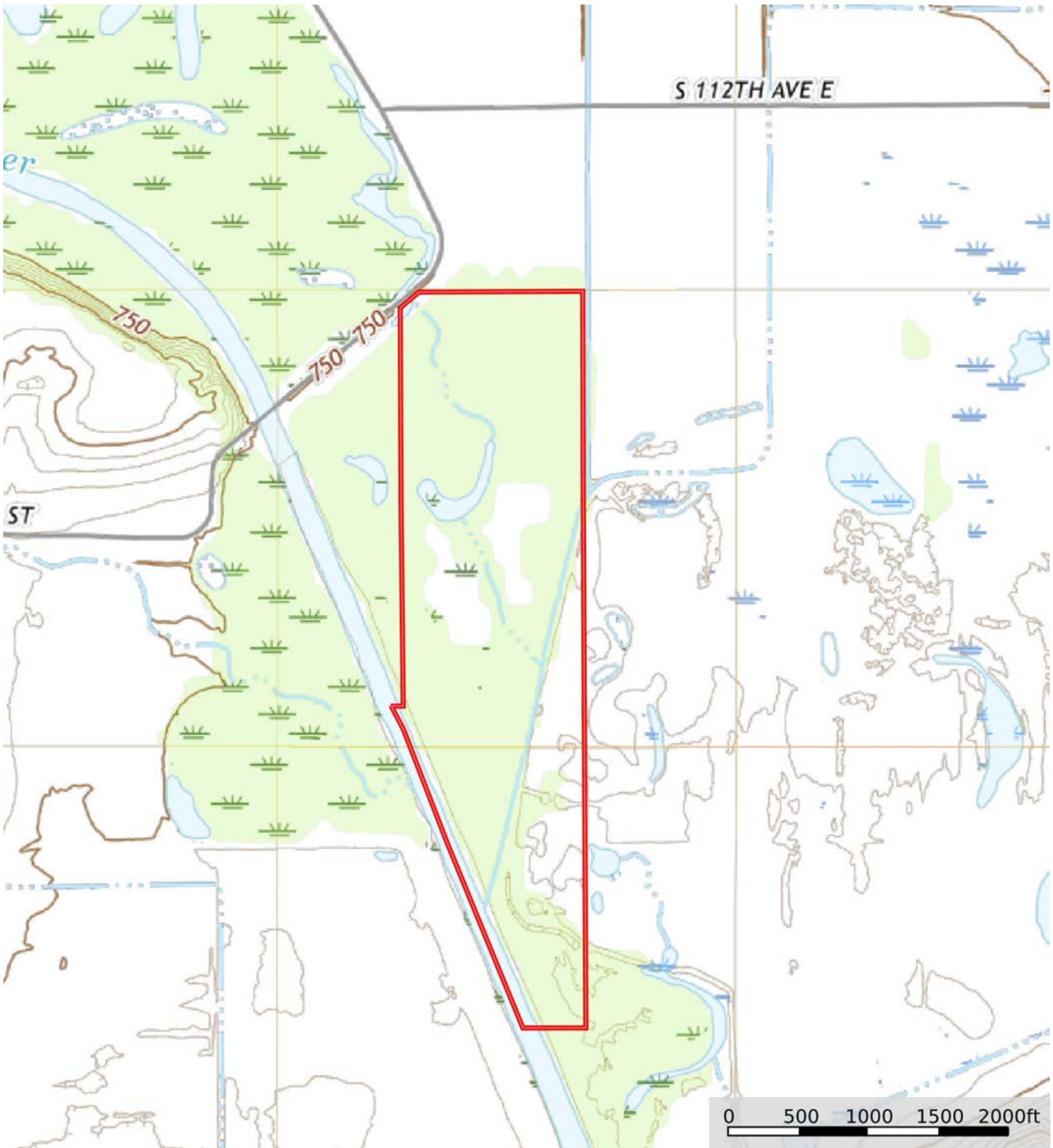
SOIL CODE	SOIL DESCRIPTION	ACRES	%	CSR2	CPI	NCCPI	CAP
3115	Colo, overwash-Lawson complex, channeled, 0 to 2 percent slopes, frequently flooded	81.59	59.53	5.0	0	10	5w
212	Kennebec silt loam, 0 to 2 percent slopes	28.89	21.08	92.0	0	97	1
133	Colo silty clay loam, 0 to 2 percent slopes, occasionally flooded	20.85	15.21	78.0	81	78	2w
RIVER	Water, rivers and streams	5.44	3.97	-	0	-	-
54	Zook silty clay loam, 0 to 2 percent slopes, occasionally flooded	0.29	0.21	60.0	0	63	2w
TOTALS		137.06(*)	100%	34.36	12.32	38.4	3.64


(*) Total acres may differ in the second decimal compared to the sum of each acreage soil. This is due to a round error because we only show the acres of each soil with two decimal.



L2300077

Jasper County, Iowa, 138 AC +/-



 Boundary