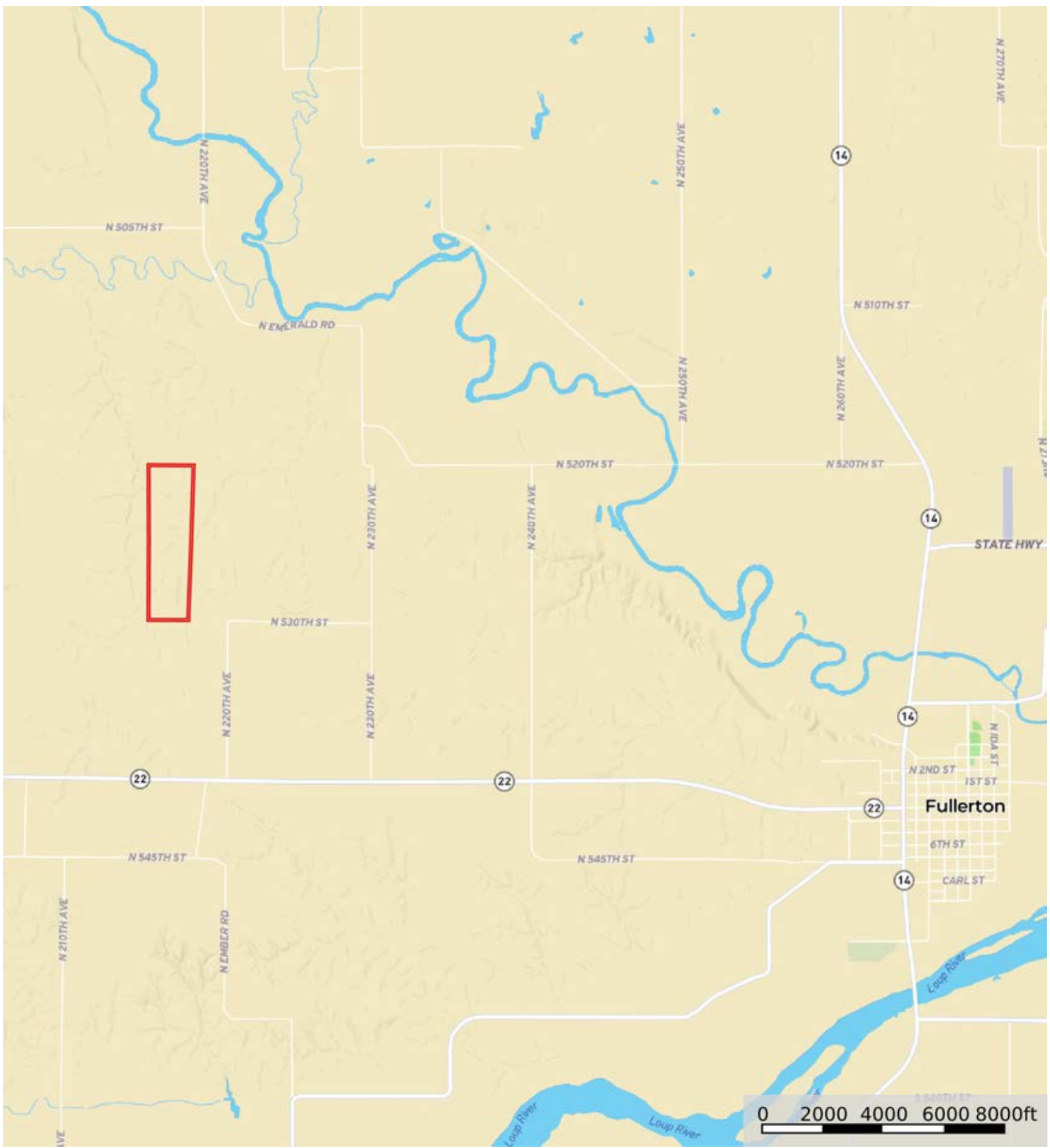


L2300212

Nance County, Nebraska, 156.67 AC +/-




Boundary

L2300212

Nance County, Nebraska, 156.67 AC +/-



 Boundary

L2300212

Nance County, Nebraska, 156.67 AC +/-



 Boundary

|  Boundary 165.3 ac

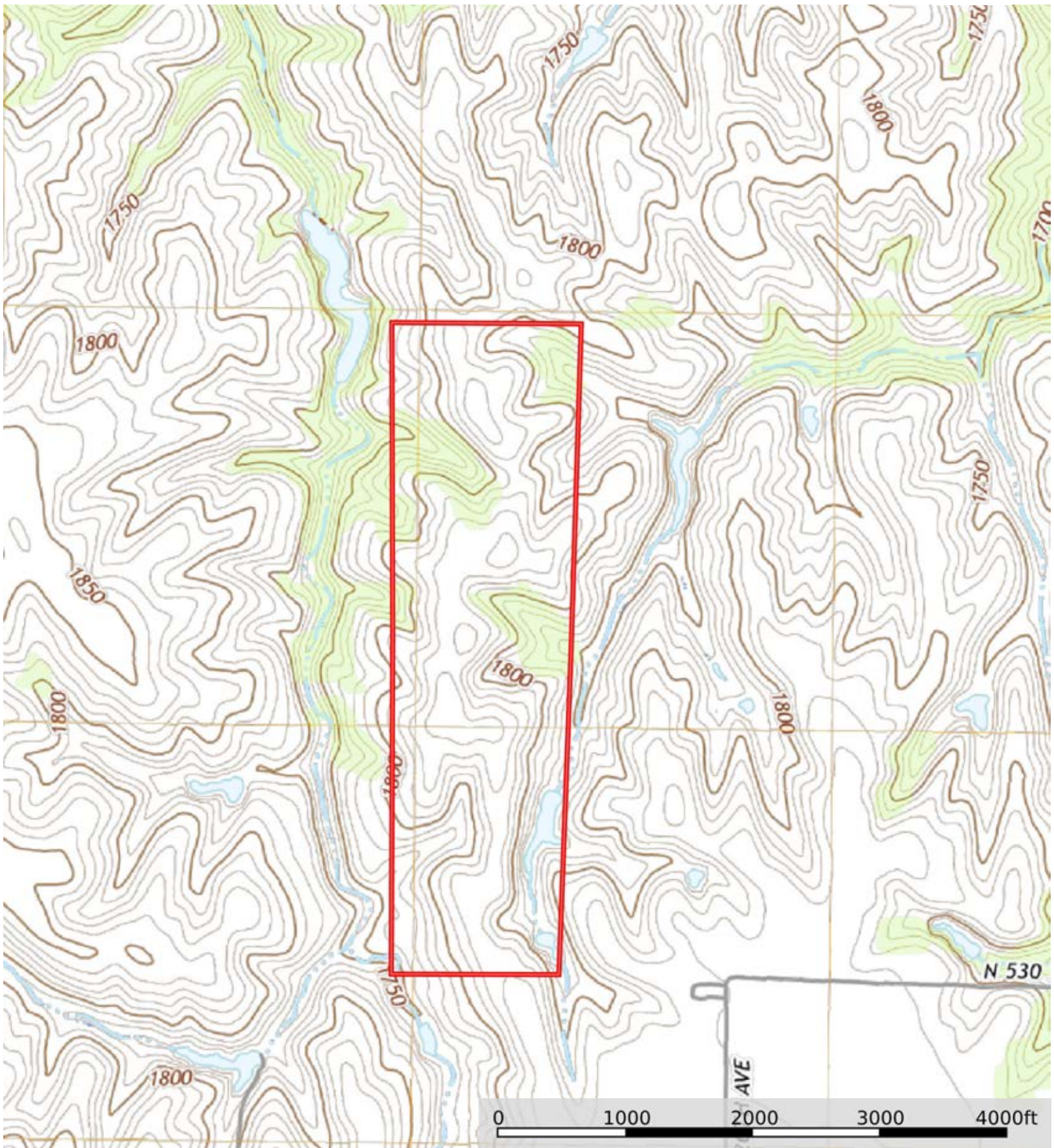
SOIL CODE	SOIL DESCRIPTION	ACRES	%	CPI	NCCPI	CAP
2831	Uly-Coly silt loams, 17 to 30 percent slopes, eroded	93.15	56.35	0	50	6e
2538	Coly silt loam, 6 to 11 percent slopes, eroded	68.5	41.44	0	57	4e
8864	Hord-Uly complex, 0 to 6 percent slopes	2.23	1.35	0	75	2e
2812	Uly-Holdrege silt loams, 7 to 11 percent slopes, eroded	1.42	0.86	0	65	4e
TOTALS		165.3(*)	100%	-	53.36	5.1


(\*) Total acres may differ in the second decimal compared to the sum of each acreage soil. This is due to a round error because we only show the acres of each soil with two decimal.



L2300212

Nance County, Nebraska, 156.67 AC +/-



 Boundary



The information contained herein was obtained from sources deemed to be reliable. MapRight Services makes no warranties or guarantees as to the completeness or accuracy thereof.