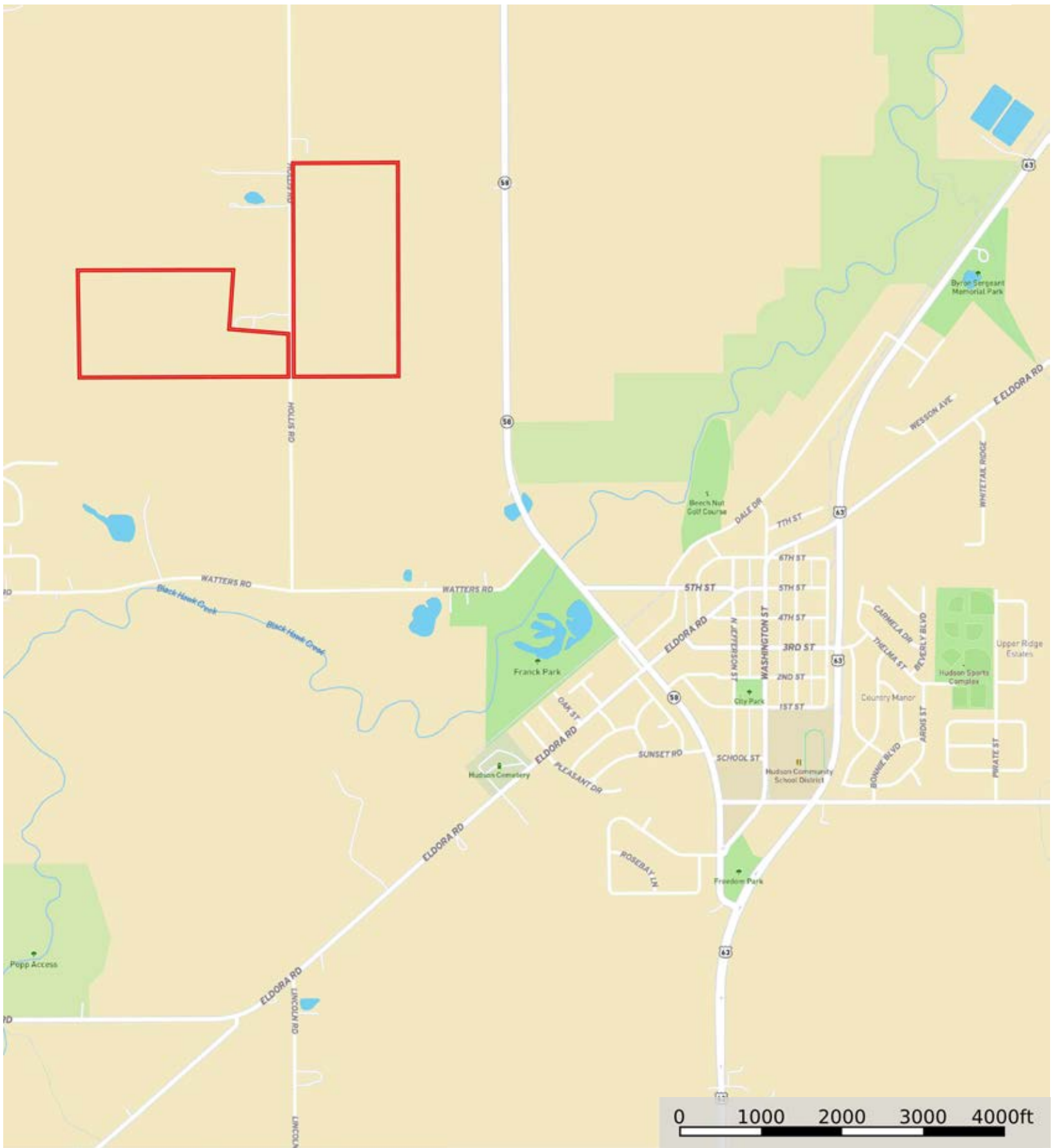


L-2300571

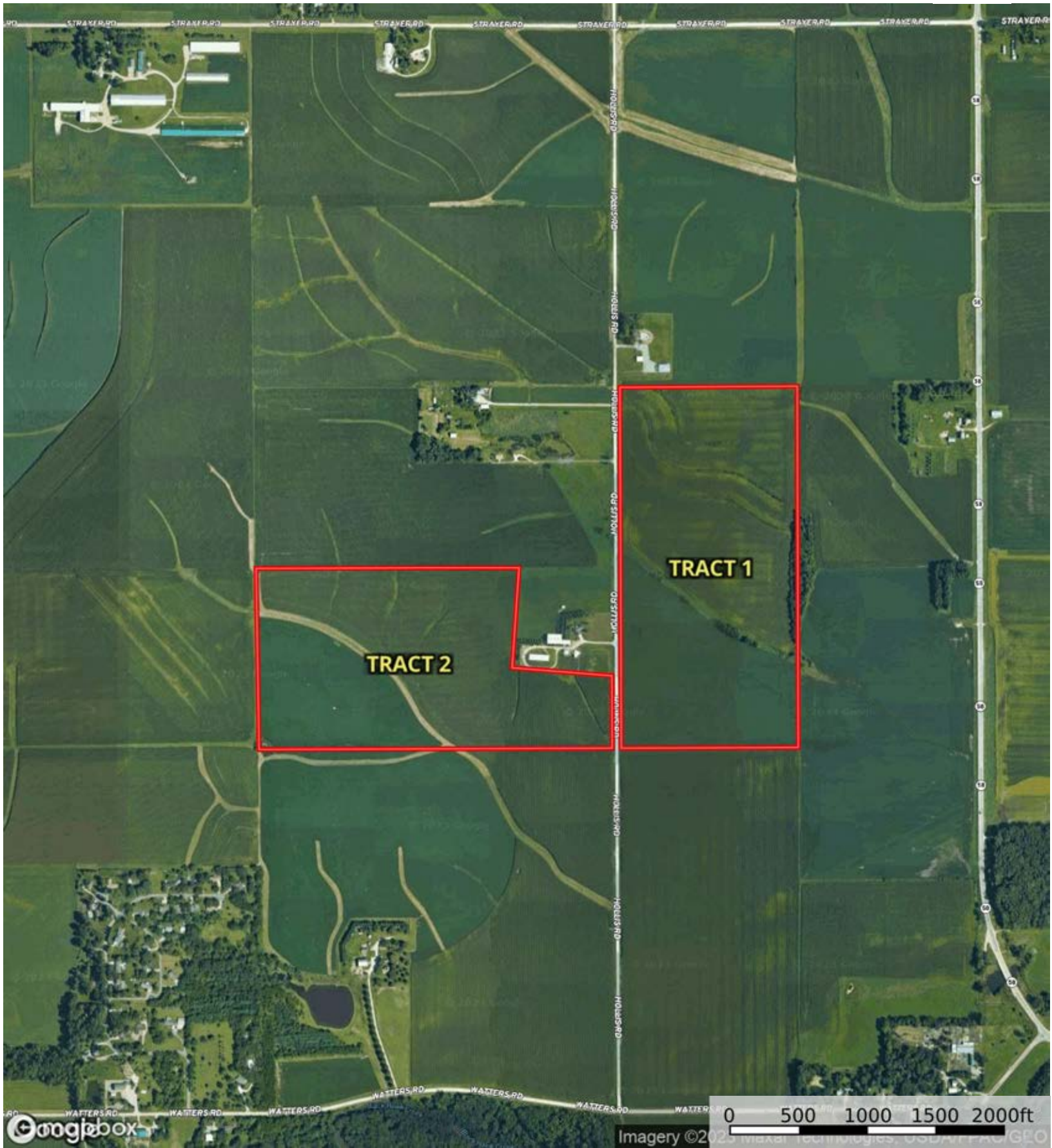
Black Hawk County, Iowa, 147 AC +/-



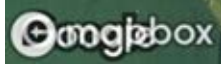
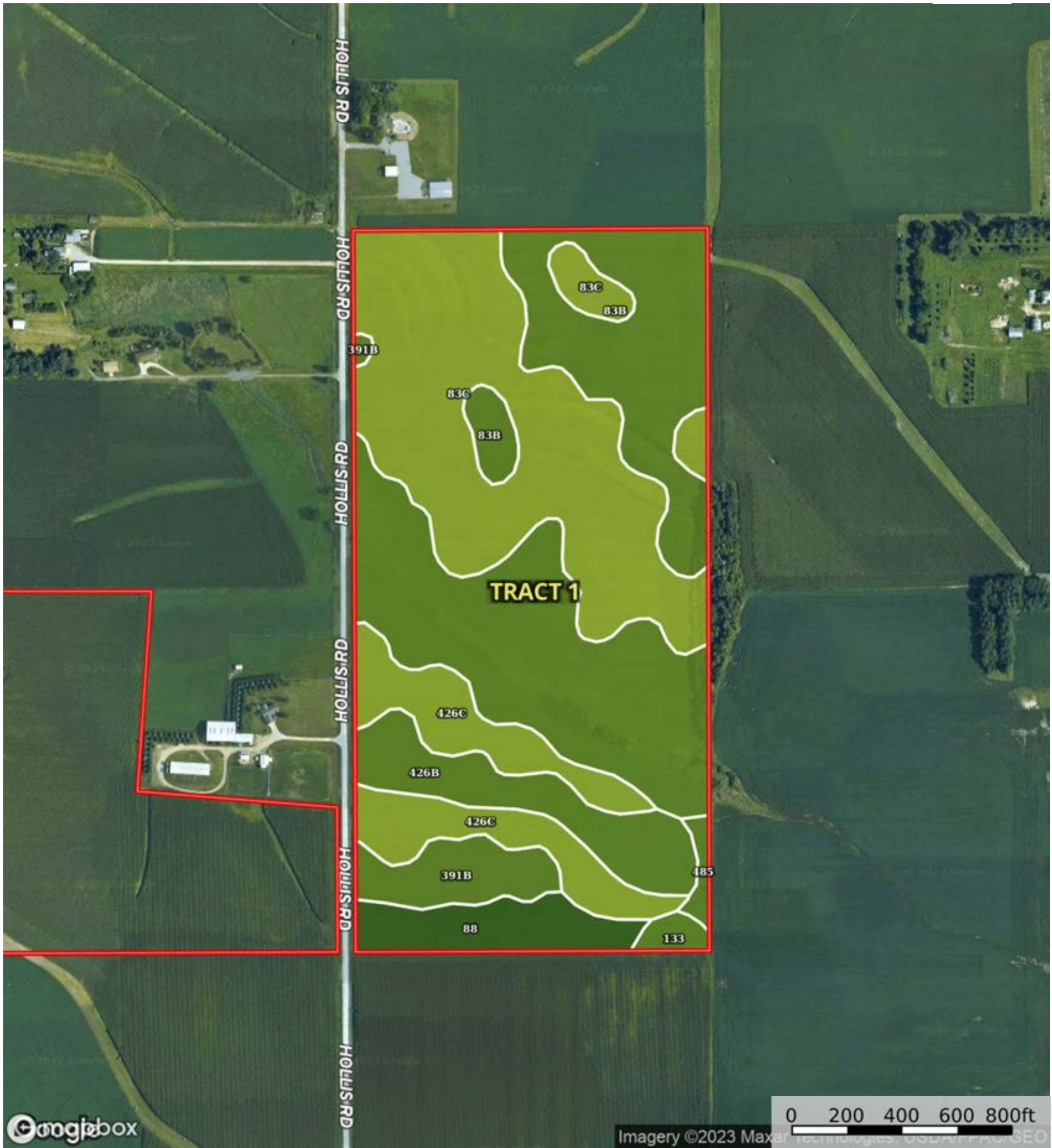
 Boundary



The information contained herein was obtained from sources deemed to be reliable. Land id™ Services makes no warranties or guarantees as to the completeness or accuracy thereof.



 Boundary



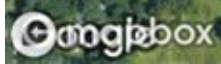
Boundary

|  Boundary 78.23 ac

SOIL CODE	SOIL DESCRIPTION	ACRES	%	CSR2	CPI	NCCPI	CAP
83C	Kenyon loam, 5 to 9 percent slopes	24.29	31.06	85.0	0	86	3e
391B	Clyde-Floyd complex, 1 to 4 percent slopes	21.18	27.08	87.0	0	89	2w
83B	Kenyon loam, 2 to 5 percent slopes	12.28	15.7	90.0	0	87	2e
426C	Aredale loam, 5 to 9 percent slopes	9.08	11.61	86.0	0	86	3e
426B	Aredale loam, 2 to 5 percent slopes	6.06	7.75	91.0	0	87	2e
88	Nevin silty clay loam, 0 to 2 percent slopes	4.05	5.18	95.0	0	98	1
133	Colo silty clay loam, 0 to 2 percent slopes, occasionally flooded	0.7	0.9	78.0	0	78	2w
485	Spillville loam, 0 to 2 percent slopes, occasionally flooded	0.59	0.75	76.0	0	87	2w
TOTALS		78.23(*)	100%	87.33	-	87.64	2.37

(*) Total acres may differ in the second decimal compared to the sum of each acreage soil. This is due to a round error because we only show the acres of each soil with two decimal.





Imagery ©2023 Maxar Technologies, GeoEye, AeroGRID, IGN, GEBCO

 Boundary

|  Boundary 66.13 ac

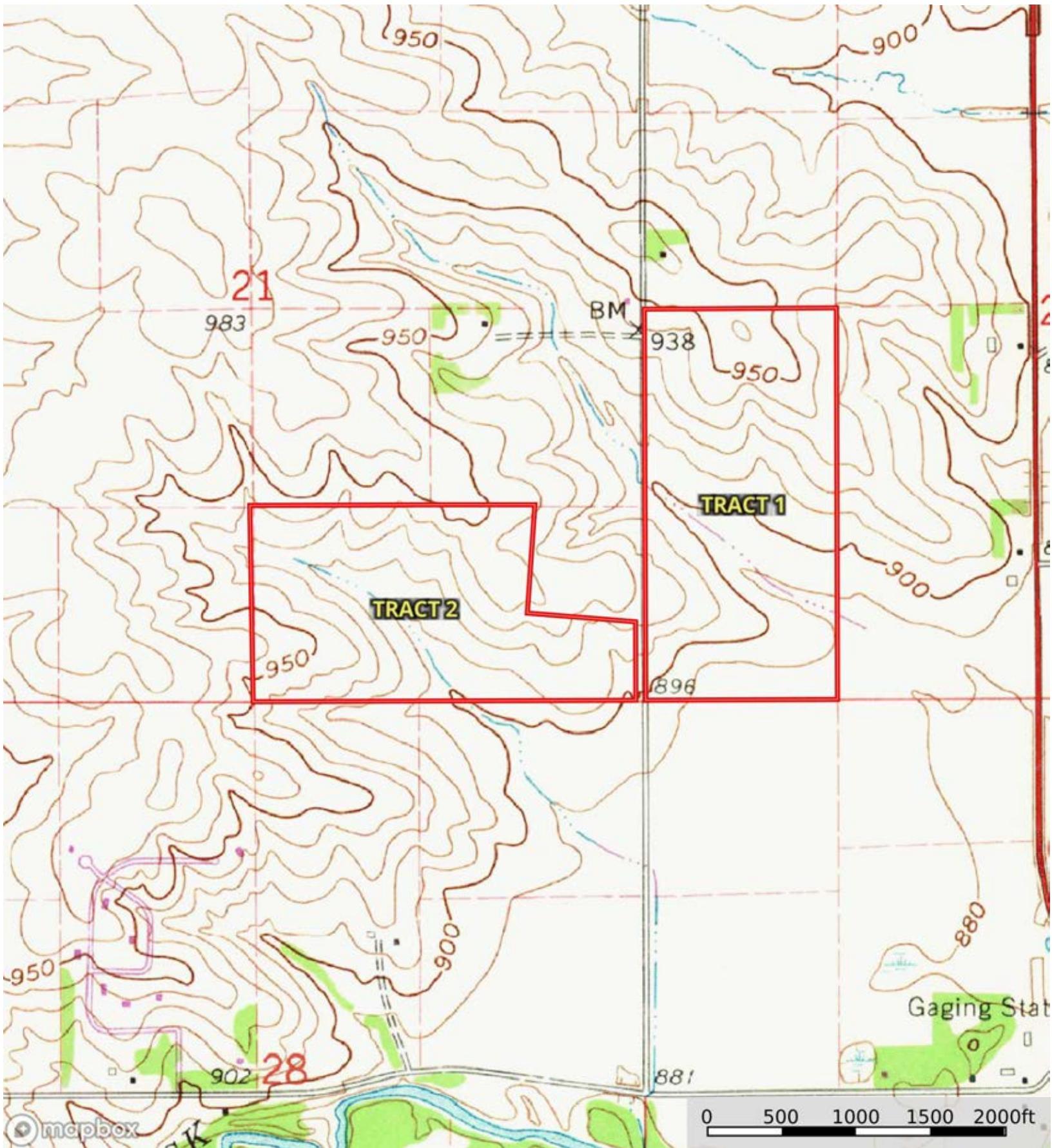
SOIL CODE	SOIL DESCRIPTION	ACRES	%	CSR2	CPI	NCCPI	CAP
426C	Aredale loam, 5 to 9 percent slopes	23.49	35.52	86.0	0	86	3e
83B	Kenyon loam, 2 to 5 percent slopes	18.77	28.38	90.0	0	87	2e
391B	Clyde-Floyd complex, 1 to 4 percent slopes	17.62	26.64	87.0	0	89	2w
88	Nevin silty clay loam, 0 to 2 percent slopes	4.32	6.53	95.0	0	98	1
426B	Aredale loam, 2 to 5 percent slopes	1.93	2.92	91.0	0	87	2e
TOTALS		66.13(*)	100%	88.12	-	87.88	2.29

(*) Total acres may differ in the second decimal compared to the sum of each acreage soil. This is due to a round error because we only show the acres of each soil with two decimal.



L-2300571

Black Hawk County, Iowa, 147 AC +/-



Boundary



The information contained herein was obtained from sources deemed to be reliable. Land id™ Services makes no warranties or guarantees as to the completeness or accuracy thereof.