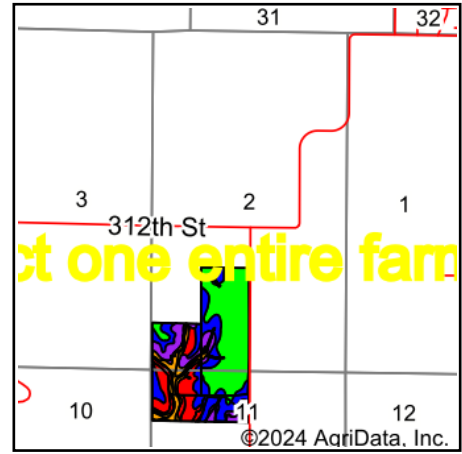
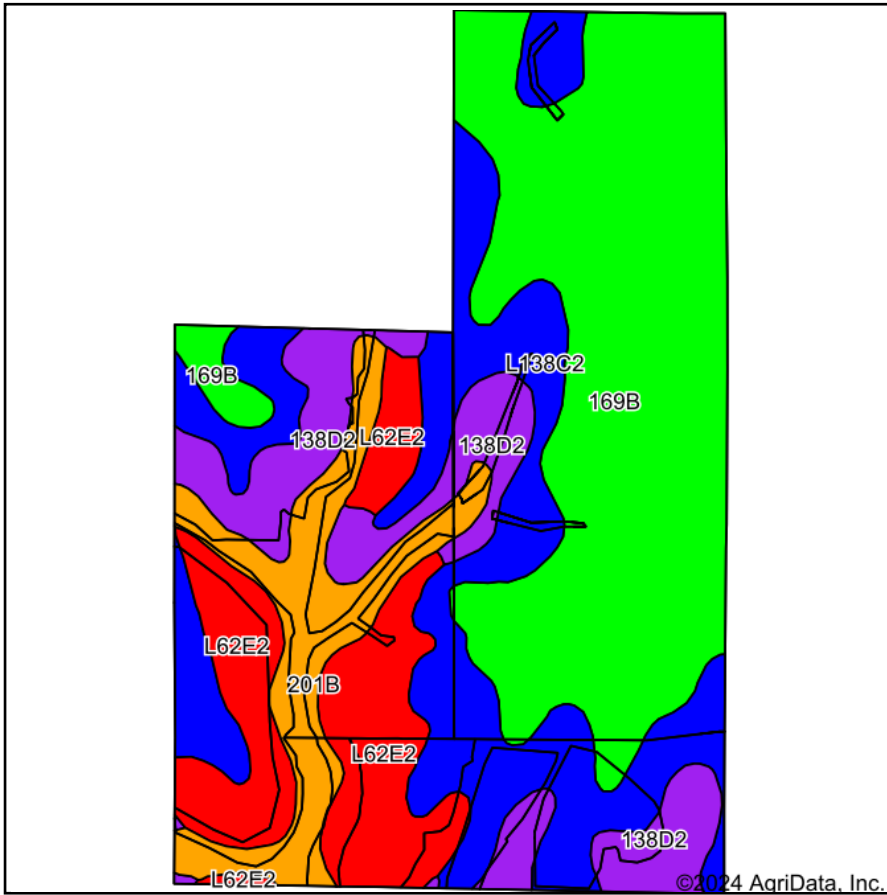


Soils Map








State: **Iowa**
 County: **Dallas**
 Location: **2-78N-28W**
 Township: **Adams**
 Acres: **201.76**
 Date: **9/13/2024**

Maps Provided By:

 CUSTOMIZED ONLINE MAPPING
 © AgriData, Inc. 2023 www.AgriDataInc.com



Area Symbol: IA049, Soil Area Version: 30

Code	Soil Description	Acres	Percent of field	CSR2 Legend	CSR2**
169B	Clarion loam, 2 to 5 percent long slopes	80.10	39.7%		91
L138C2	Clarion loam, Bemis moraine, 6 to 10 percent slopes, moderately eroded	48.70	24.1%		83
L62E2	Storden loam, Bemis moraine, 10 to 22 percent slopes, moderately eroded	29.42	14.6%		32
138D2	Clarion loam, 9 to 14 percent slopes, moderately eroded	24.27	12.0%		54
201B	Coland-Terril complex, 2 to 5 percent slopes	19.27	9.6%		74
				Weighted Average	74.4

**IA has updated the CSR values for each county to CSR2.