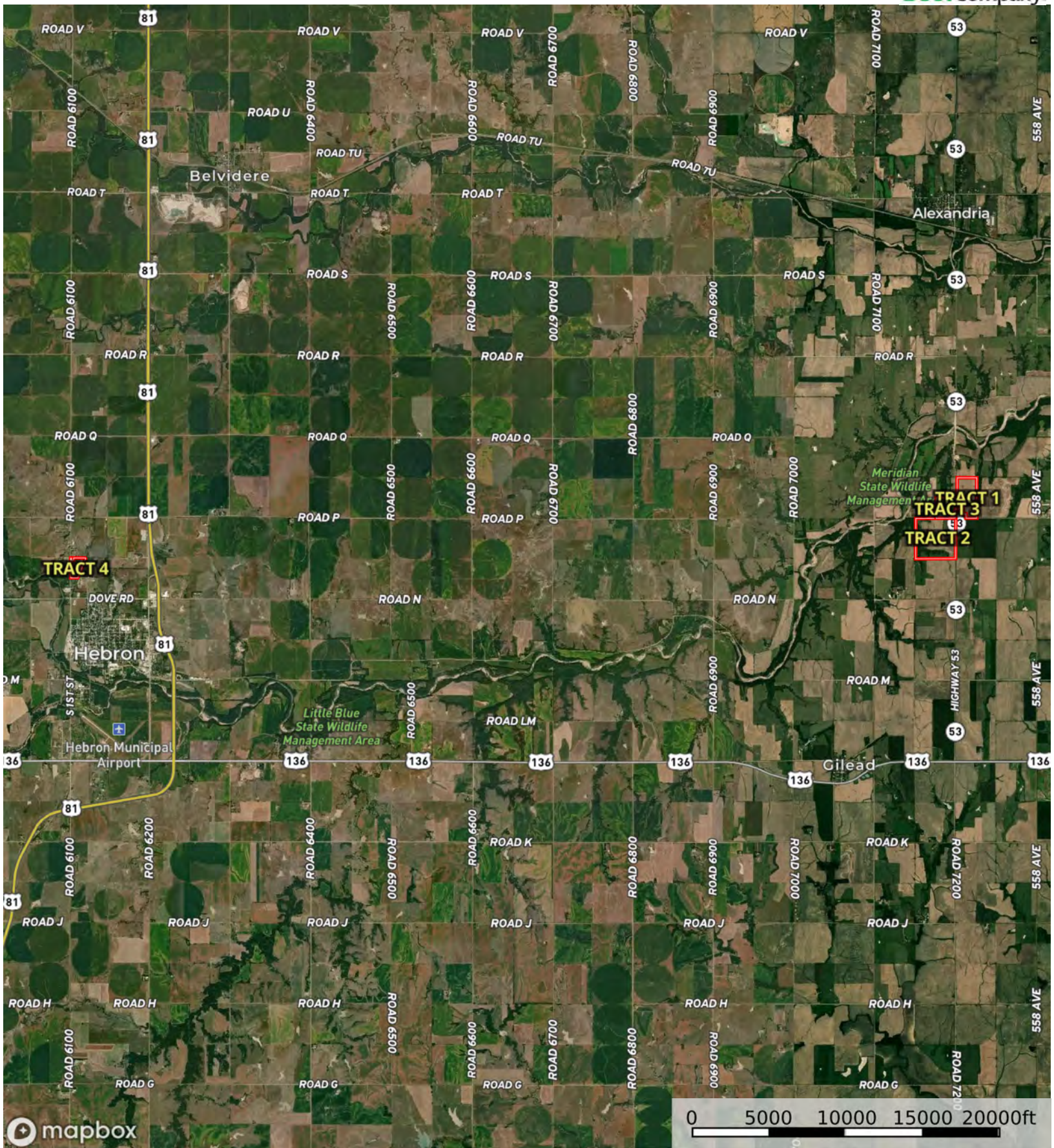
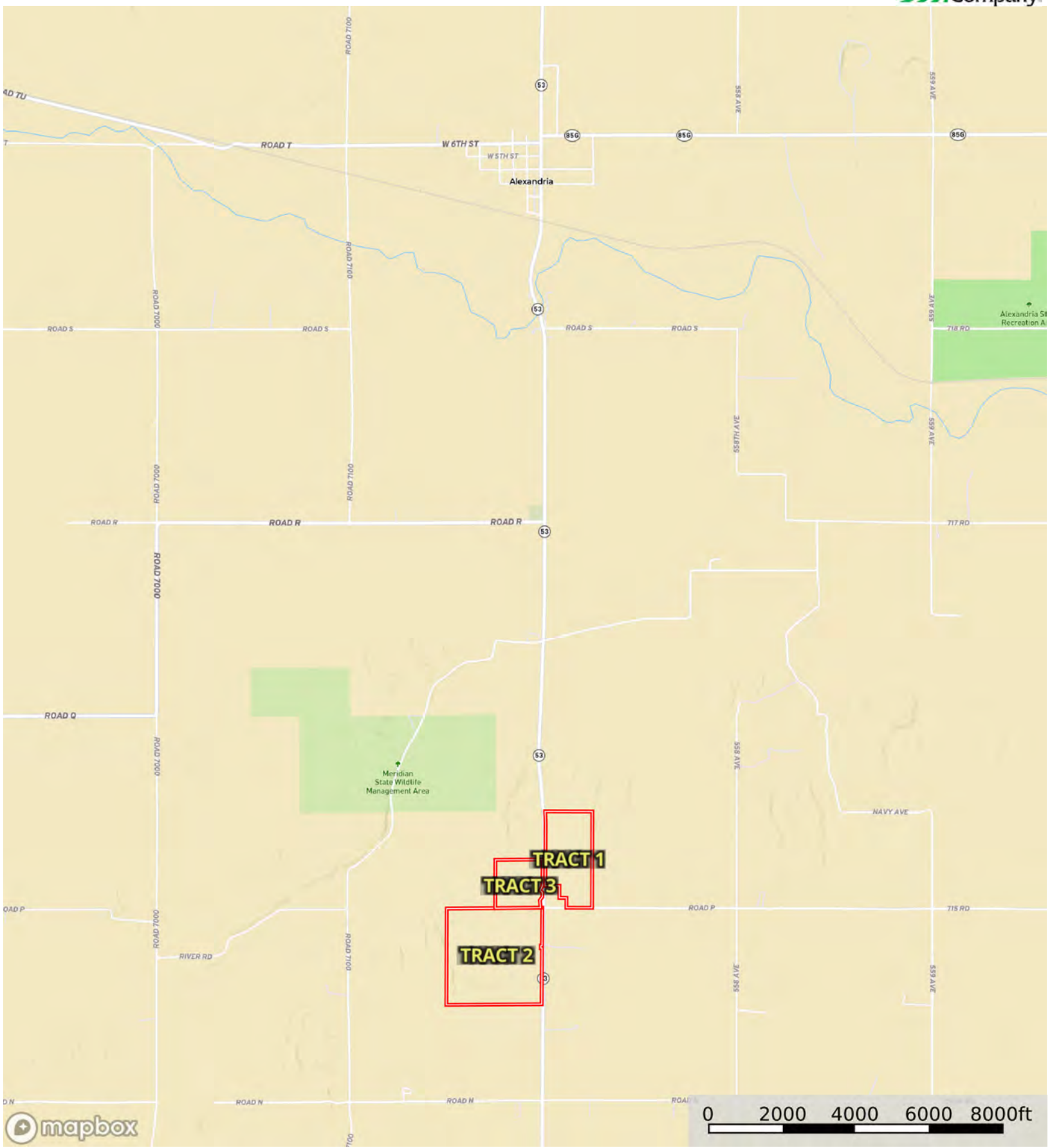


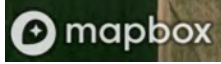
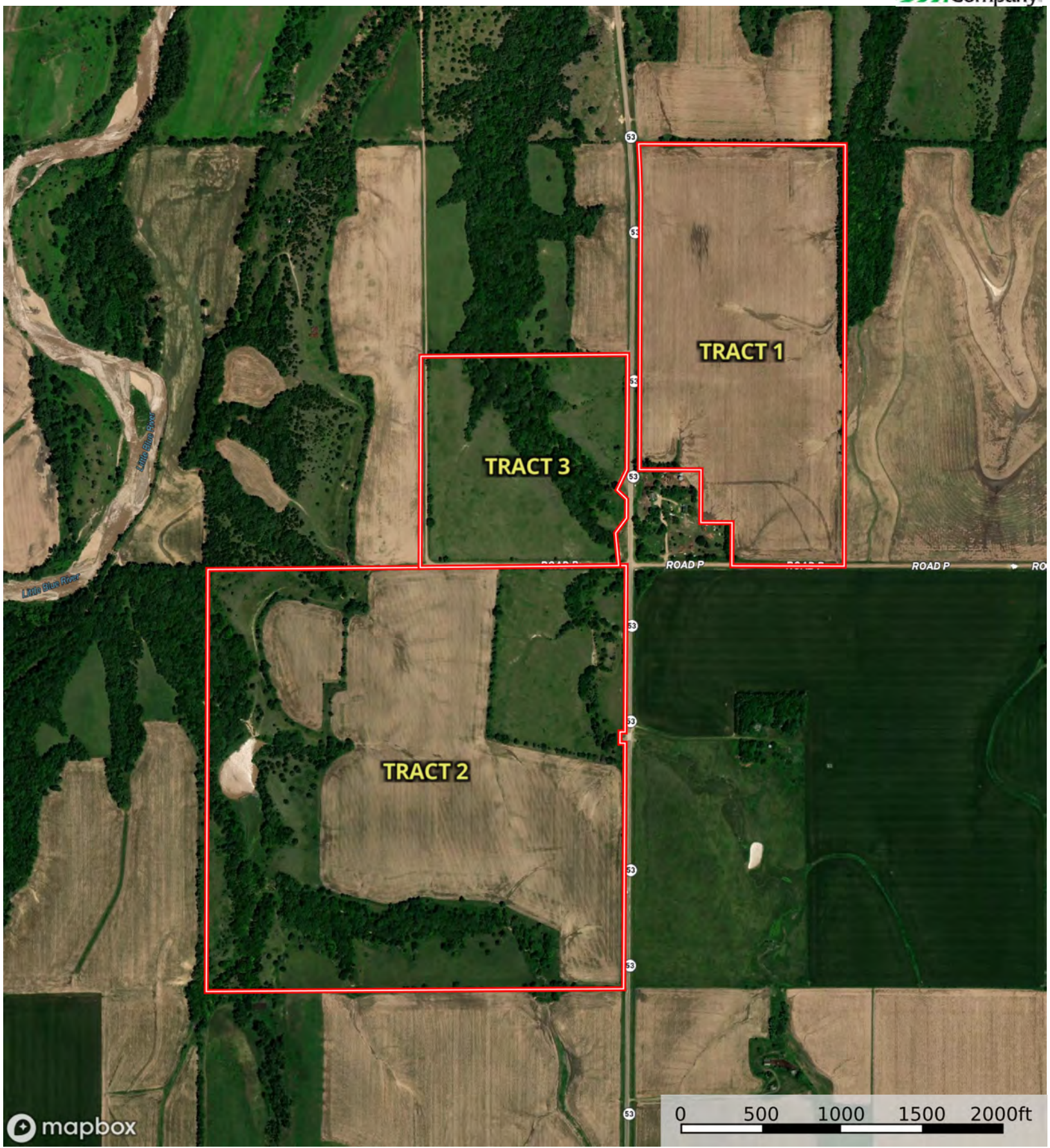
Boundary



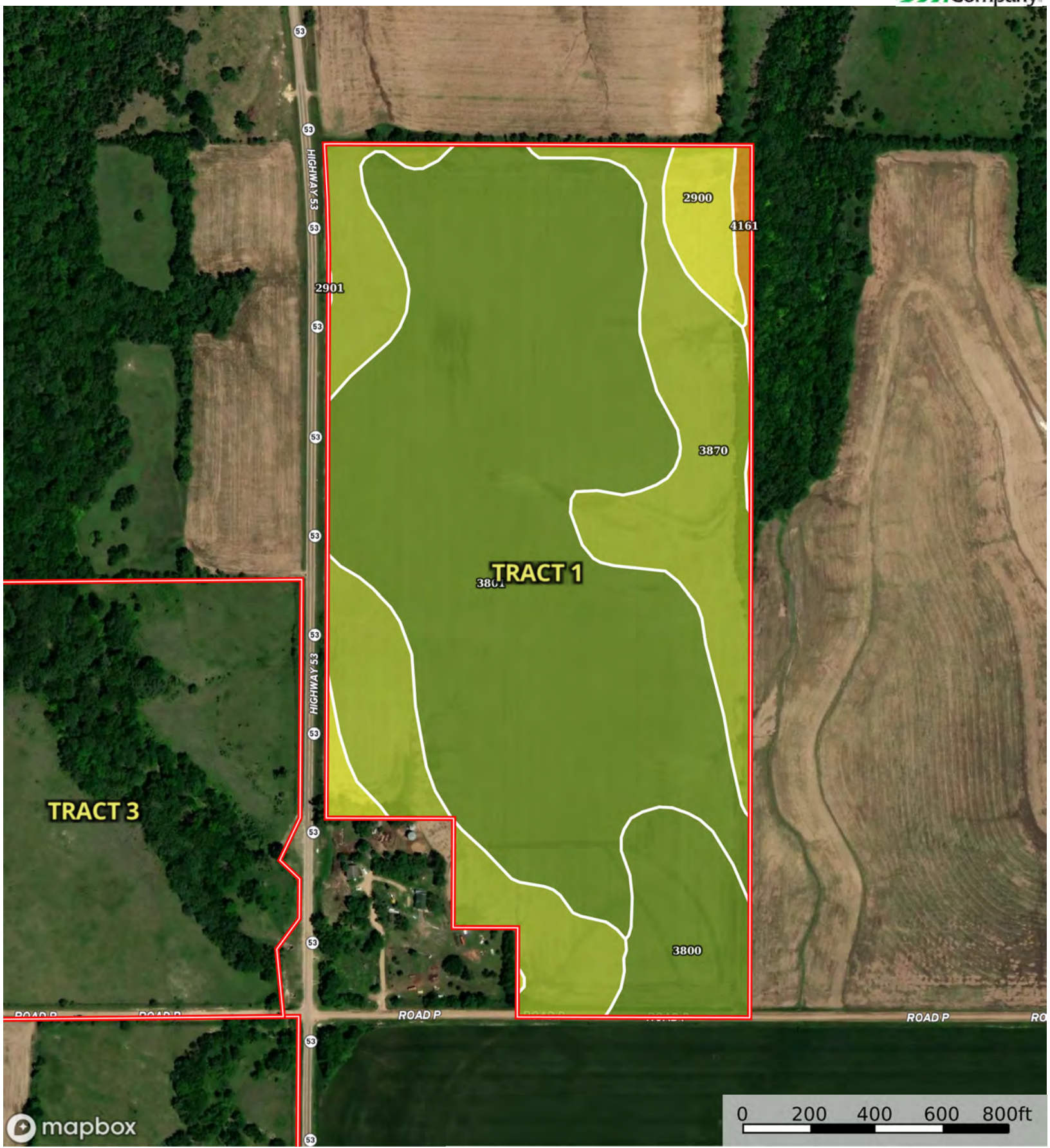
 Boundary



 Boundary



Boundary



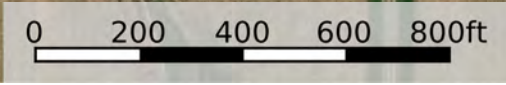
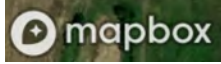
Boundary

Boundary 21.06 ac

SOIL CODE	SOIL DESCRIPTION	ACRES	%	CPI	NCCPI	CAP
3776	Muir silt loam, 1 to 3 percent slopes	11.48	54.46	0	81	2e
3246	Meadin loam, 2 to 30 percent slopes	4.67	22.15	0	38	6s
3775	Muir silt loam, rarely flooded	2.36	11.2	0	87	1
3188	Jansen sandy clay loam, 6 to 11 percent slopes, eroded	1.29	6.12	0	49	4e
3186	Jansen loam, 6 to 11 percent slopes	1.24	5.88	0	54	4e
3840	Geary silty clay loam, 7 to 11 percent slopes, eroded	0.02	0.09	0	62	4e
TOTALS		21.06(*)	100%	-	68.5	3.02

(*) Total acres may differ in the second decimal compared to the sum of each acreage soil. This is due to a round error because we only show the acres of each soil with two decimal.





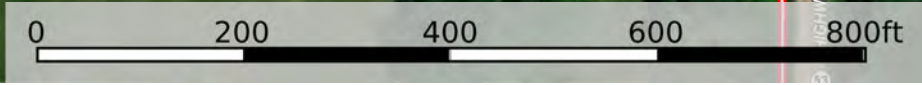
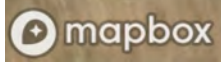
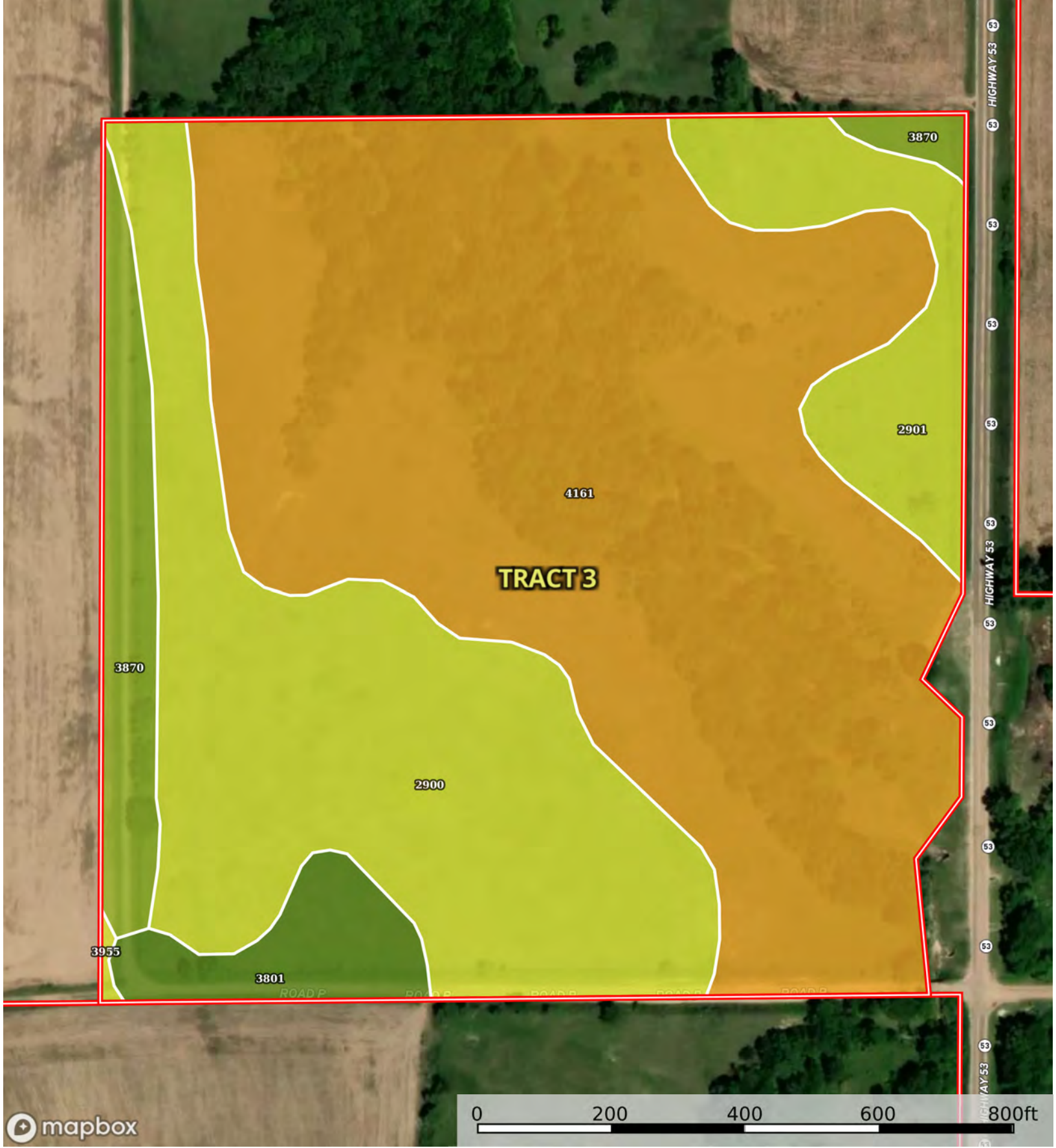
Boundary

Boundary 21.06 ac

SOIL CODE	SOIL DESCRIPTION	ACRES	%	CPI	NCCPI	CAP
3776	Muir silt loam, 1 to 3 percent slopes	11.48	54.46	0	81	2e
3246	Meadin loam, 2 to 30 percent slopes	4.67	22.15	0	38	6s
3775	Muir silt loam, rarely flooded	2.36	11.2	0	87	1
3188	Jansen sandy clay loam, 6 to 11 percent slopes, eroded	1.29	6.12	0	49	4e
3186	Jansen loam, 6 to 11 percent slopes	1.24	5.88	0	54	4e
3840	Geary silty clay loam, 7 to 11 percent slopes, eroded	0.02	0.09	0	62	4e
TOTALS		21.06(*)	100%	-	68.5	3.02

(*) Total acres may differ in the second decimal compared to the sum of each acreage soil. This is due to a round error because we only show the acres of each soil with two decimal.





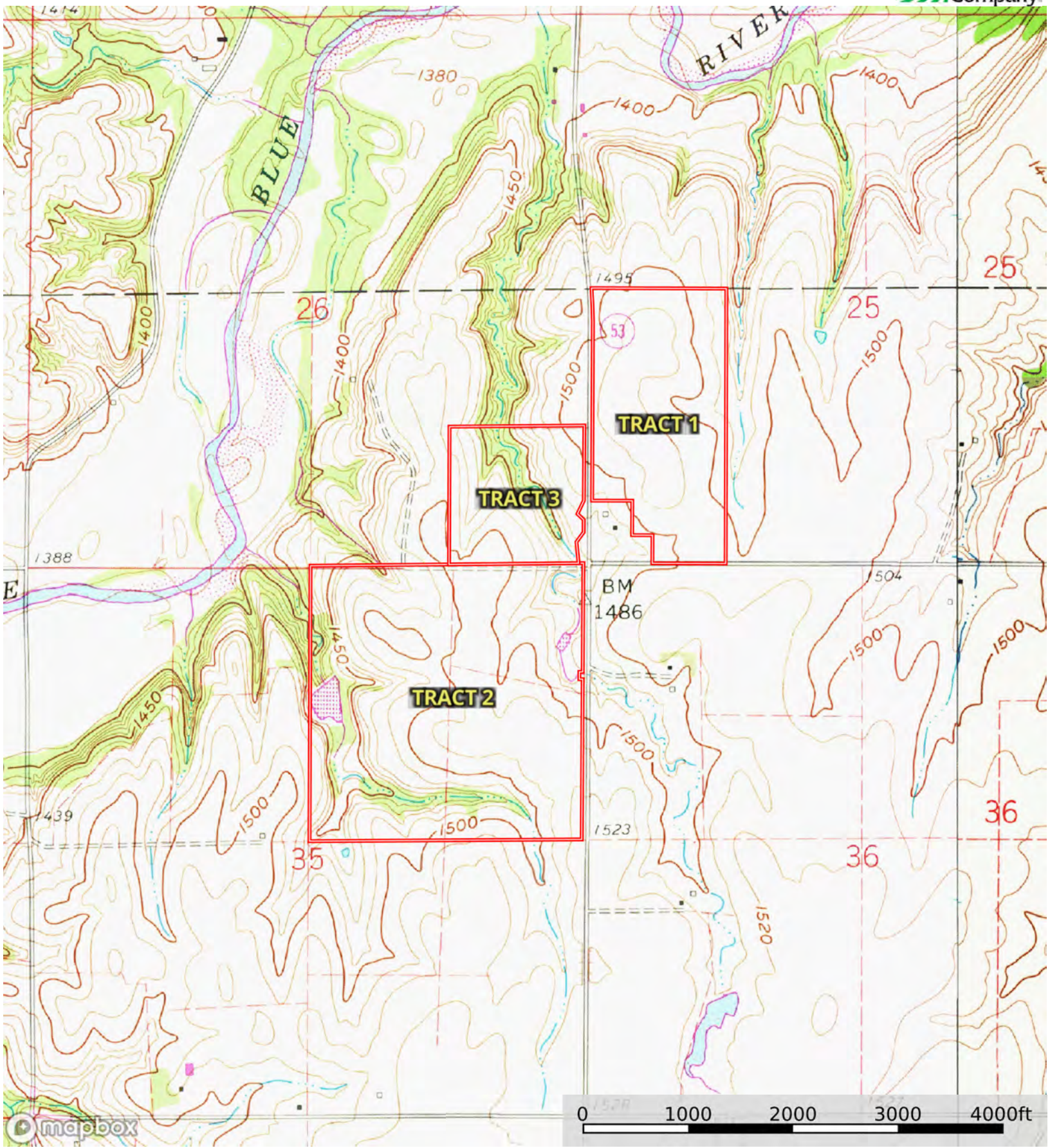
Boundary

Boundary 21.06 ac

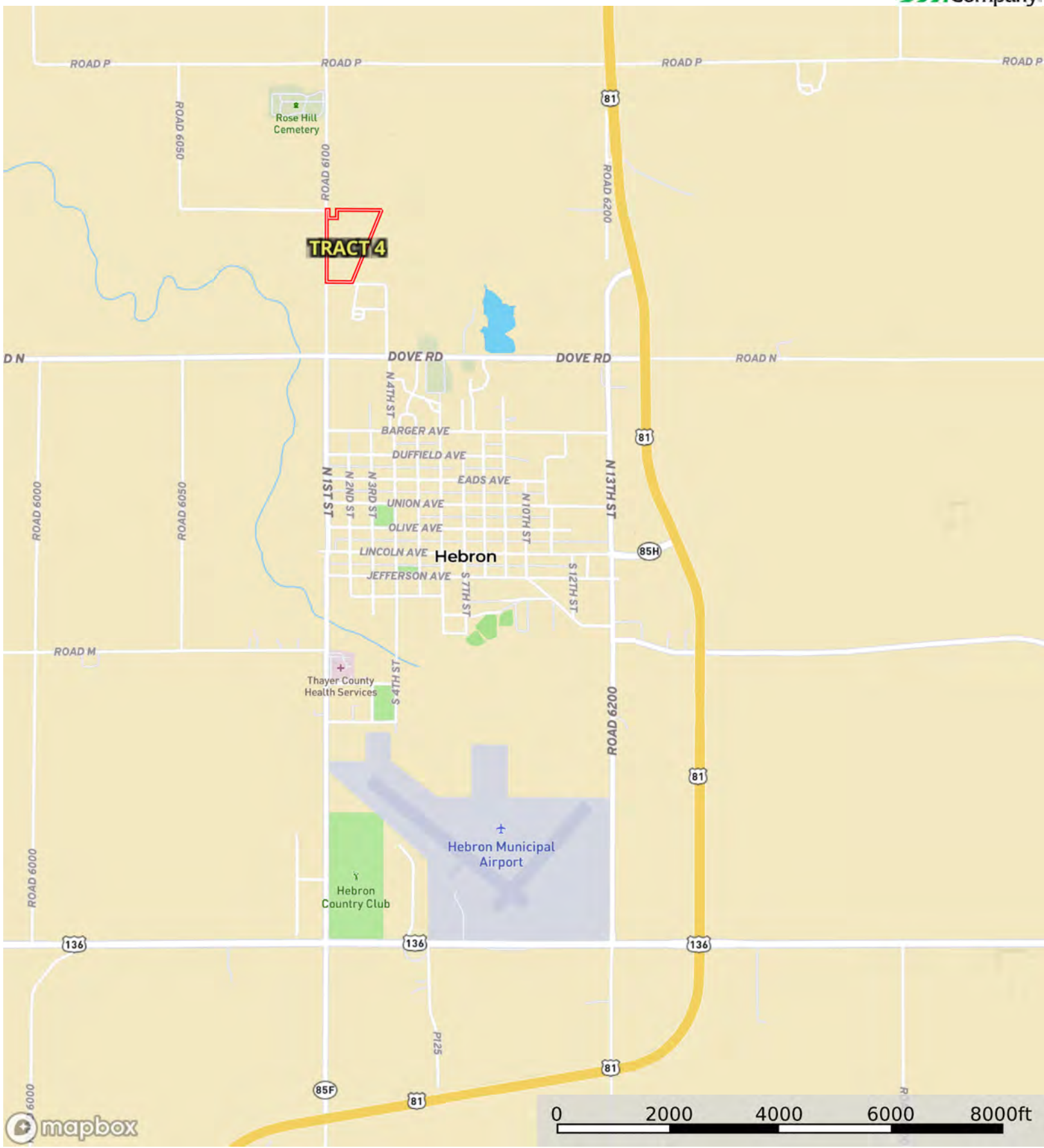
SOIL CODE	SOIL DESCRIPTION	ACRES	%	CPI	NCCPI	CAP
3776	Muir silt loam, 1 to 3 percent slopes	11.48	54.46	0	81	2e
3246	Meadin loam, 2 to 30 percent slopes	4.67	22.15	0	38	6s
3775	Muir silt loam, rarely flooded	2.36	11.2	0	87	1
3188	Jansen sandy clay loam, 6 to 11 percent slopes, eroded	1.29	6.12	0	49	4e
3186	Jansen loam, 6 to 11 percent slopes	1.24	5.88	0	54	4e
3840	Geary silty clay loam, 7 to 11 percent slopes, eroded	0.02	0.09	0	62	4e
TOTALS		21.06(*)	100%	-	68.5	3.02

(*) Total acres may differ in the second decimal compared to the sum of each acreage soil. This is due to a round error because we only show the acres of each soil with two decimal.

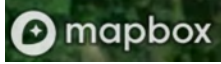
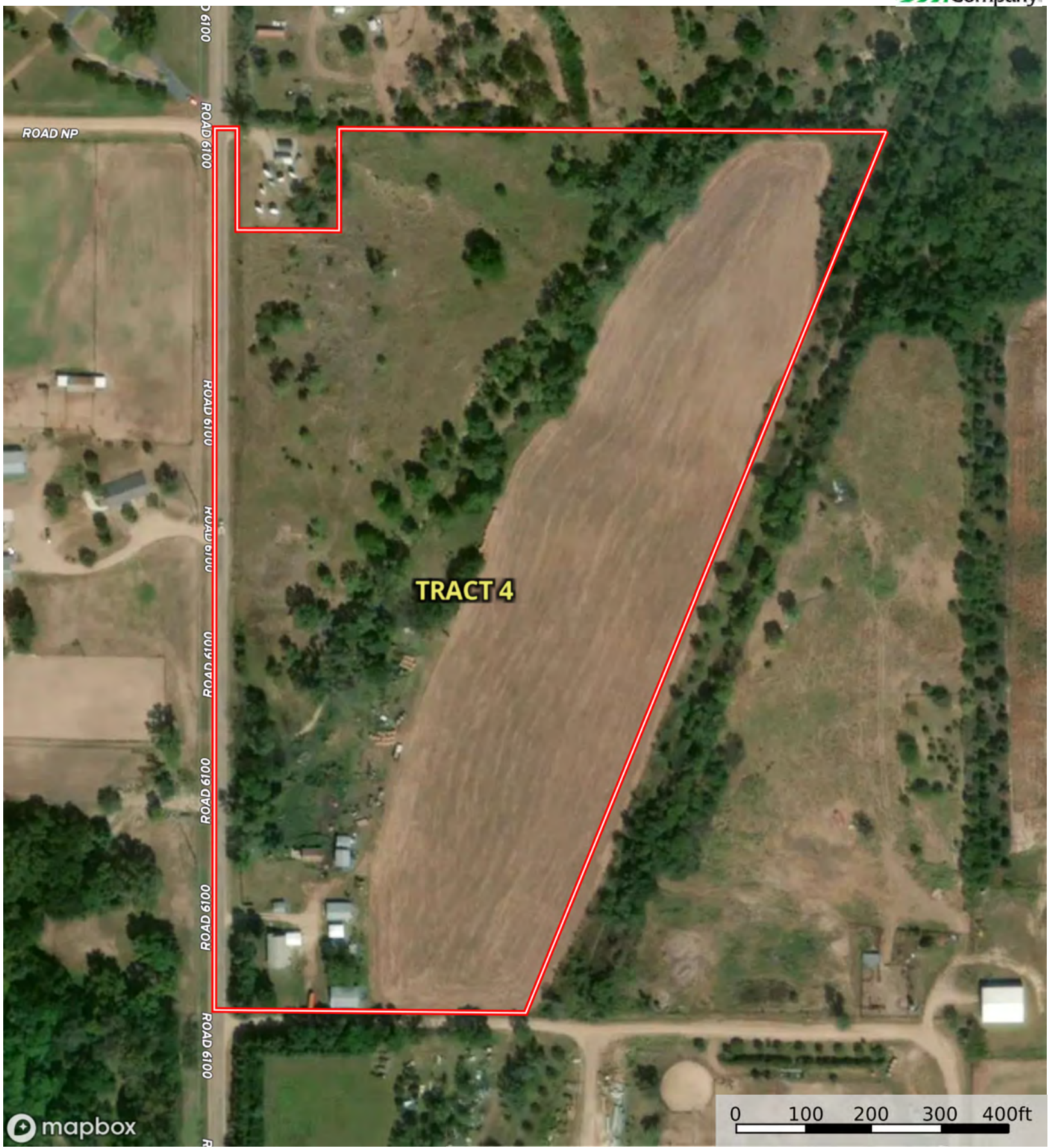




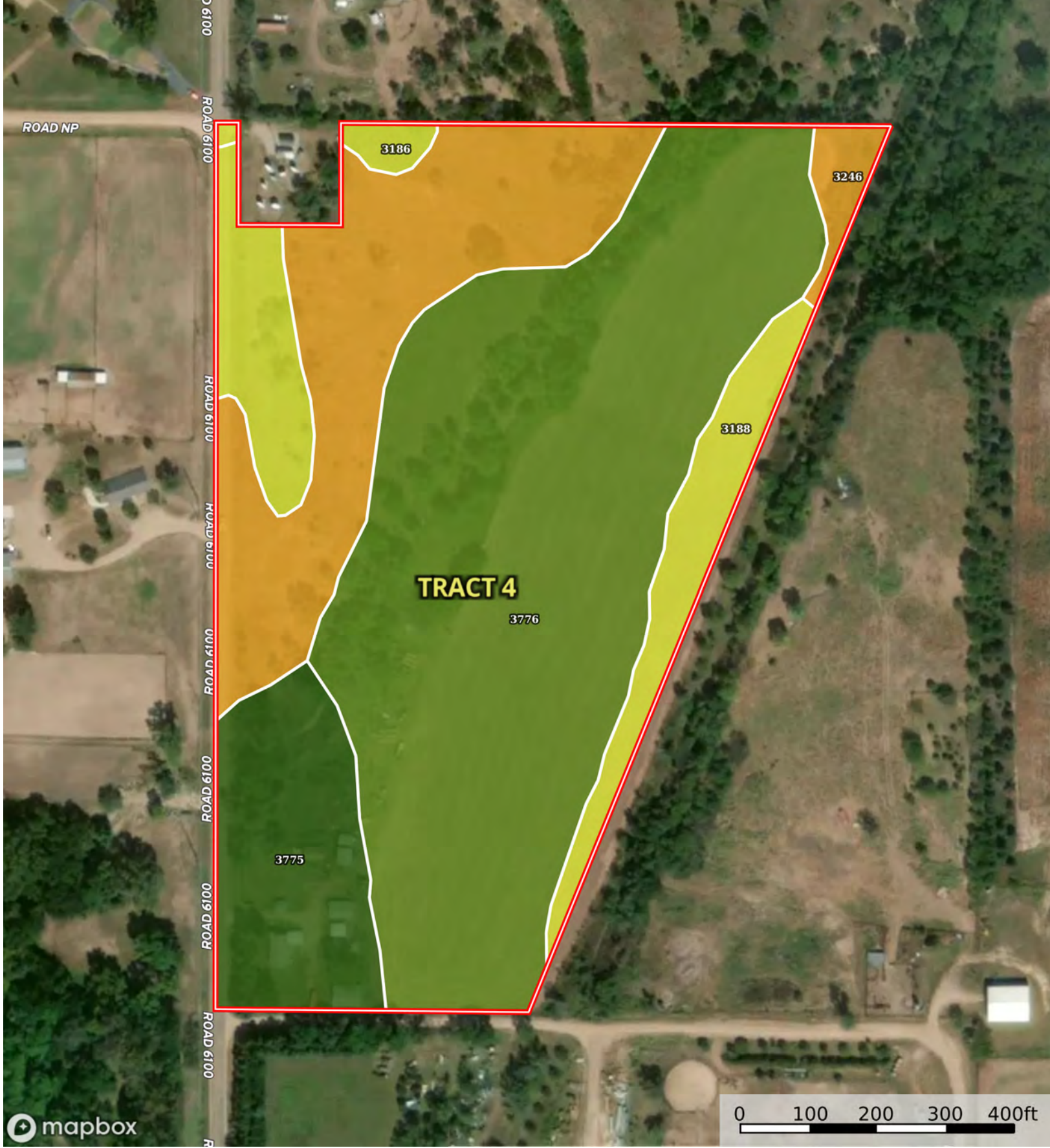
 Boundary



Boundary



Boundary



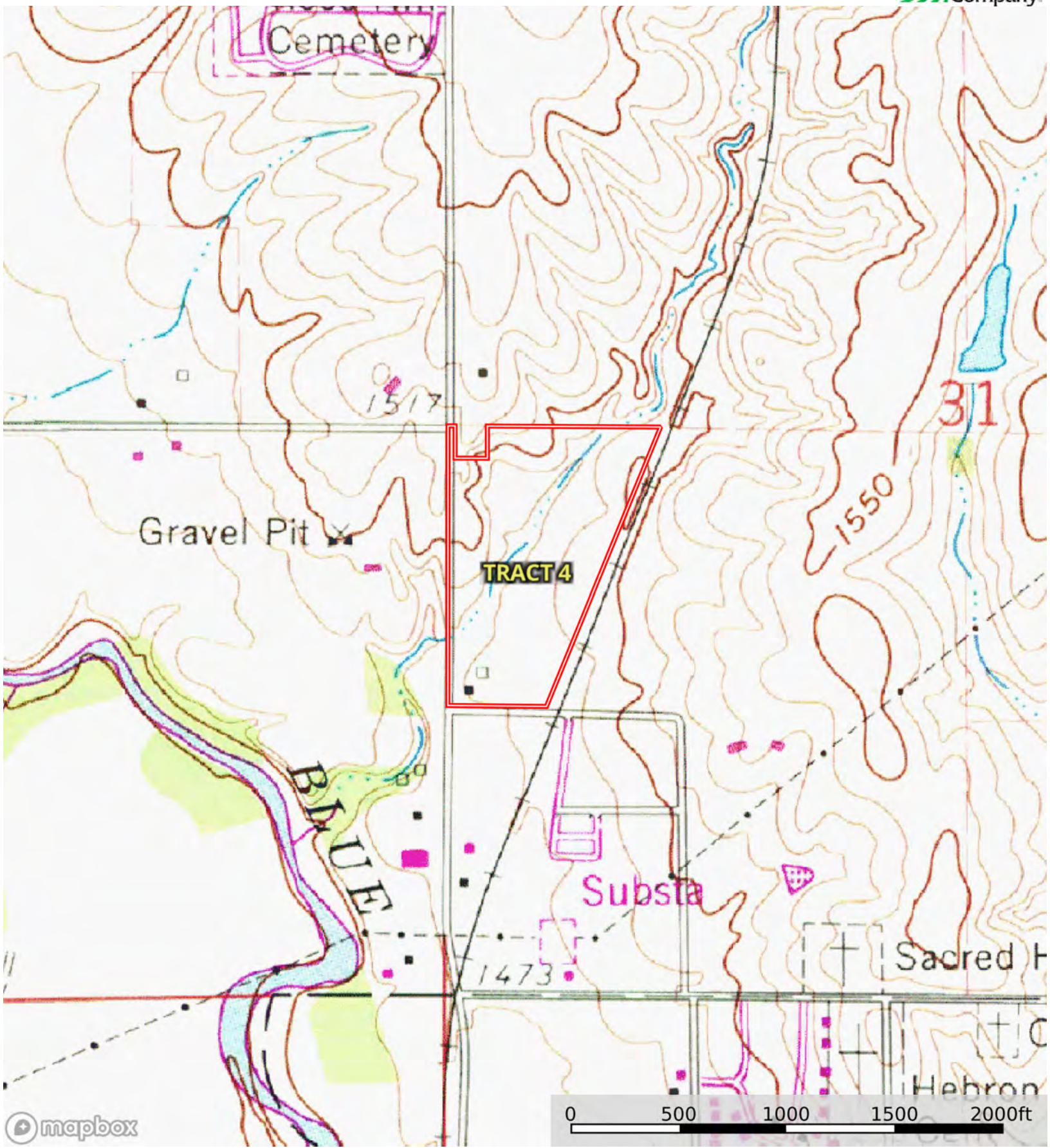
Boundary

Boundary 21.06 ac

SOIL CODE	SOIL DESCRIPTION	ACRES	%	CPI	NCCPI	CAP
3776	Muir silt loam, 1 to 3 percent slopes	11.48	54.46	0	81	2e
3246	Meadin loam, 2 to 30 percent slopes	4.67	22.15	0	38	6s
3775	Muir silt loam, rarely flooded	2.36	11.2	0	87	1
3188	Jansen sandy clay loam, 6 to 11 percent slopes, eroded	1.29	6.12	0	49	4e
3186	Jansen loam, 6 to 11 percent slopes	1.24	5.88	0	54	4e
3840	Geary silty clay loam, 7 to 11 percent slopes, eroded	0.02	0.09	0	62	4e
TOTALS		21.06(*)	100%	-	68.5	3.02

(*) Total acres may differ in the second decimal compared to the sum of each acreage soil. This is due to a round error because we only show the acres of each soil with two decimal.





 Boundary