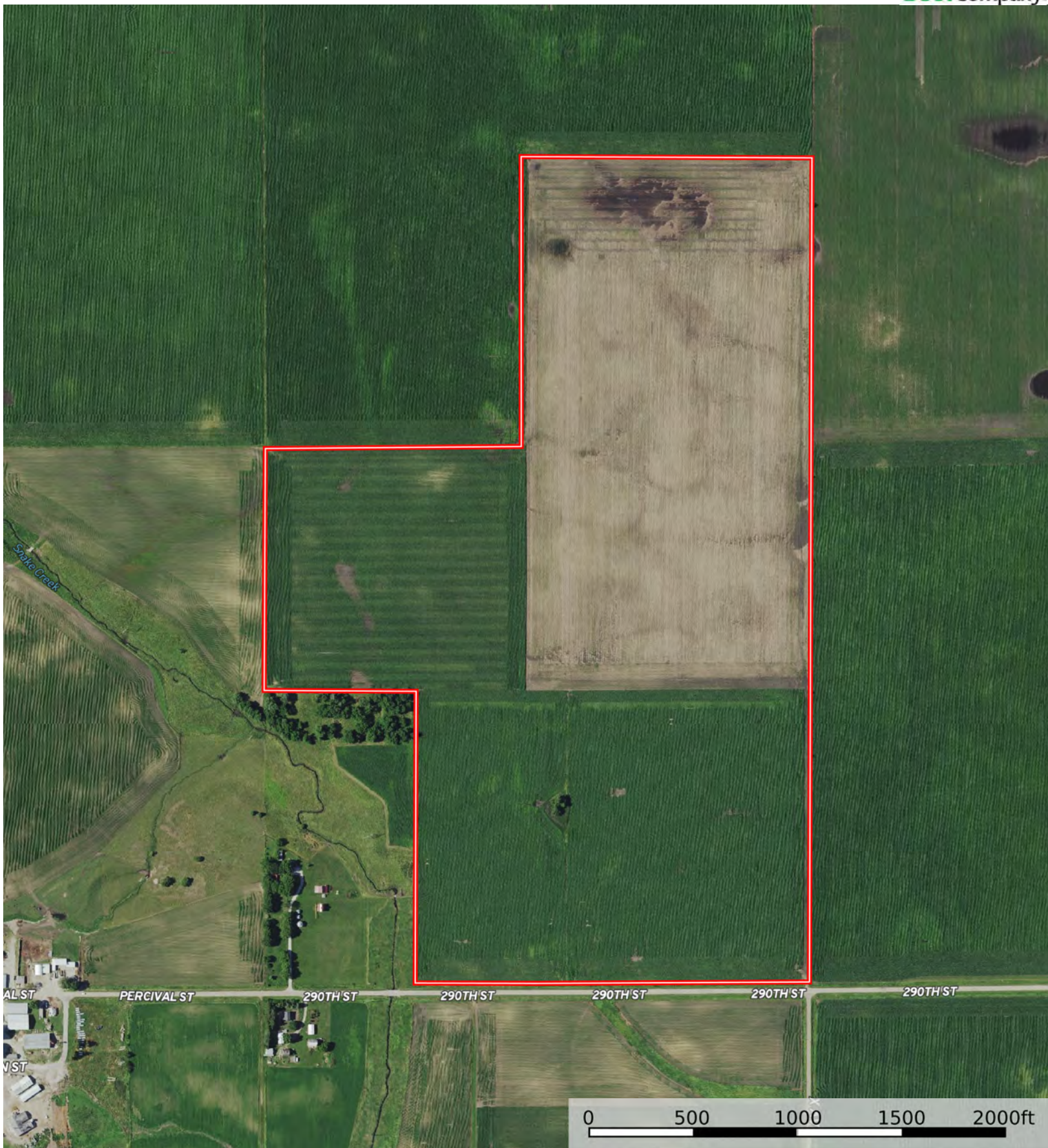


Boundary



Boundary





Boundary



| Boundary 176.4 ac

SOIL CODE	SOIL DESCRIPTION	ACRES	%	CSR2	CPI	NCCPI	CAP
L55	Nicollet loam, 1 to 3 percent slopes	41.57	23.56	91.0	0	85	1
L107	Webster clay loam, Bemis moraine, 0 to 2 percent slopes	38.94	22.07	88.0	0	84	2w
L138C2	Clarion loam, Bemis moraine, 6 to 10 percent slopes, moderately eroded	24.5	13.89	83.0	0	62	3e
L138B2	Clarion loam, Bemis moraine, 2 to 6 percent slopes, moderately eroded	20.53	11.64	85.0	0	69	2e
6	Okoboji silty clay loam, 0 to 1 percent slopes	14.56	8.25	59.0	0	76	3w
L138B	Clarion loam, Bemis moraine, 2 to 6 percent slopes	10.86	6.16	88.0	0	80	2e
733	Calco silty clay loam, 0 to 2 percent slopes, occasionally flooded	7.15	4.05	78.0	0	88	2w
L507	Canisteo clay loam, Bemis moraine, 0 to 2 percent slopes	6.05	3.43	87.0	0	81	2w
L638D2	Omsrud-Storden complex, Bemis moraine, 10 to 16 percent slopes, moderately eroded	5.5	3.12	53.0	0	63	4e
L638C2	Clarion-Storden complex, Bemis moraine, 6 to 10 percent slopes, moderately eroded	2.04	1.16	75.0	0	64	3e
L138C	Clarion loam, Bemis moraine, 6 to 10 percent slopes	1.59	0.9	84.0	0	76	3e
585B	Coland-Spillville complex, 1 to 5 percent slopes	1.57	0.89	74.0	0	92	2w
138D2	Clarion loam, 9 to 14 percent slopes, moderately eroded	1.54	0.87	50.0	0	71	3e
TOTALS		176.4(*)	100%	83.09	-	77.58	2.08









(*) Total acres may differ in the second decimal compared to the sum of each acreage soil. This is due to a round error because we only show the acres of each soil with two decimal.

Capability Legend

Increased Limitations and Hazards

Decreased Adaptability and Freedom of Choice Users

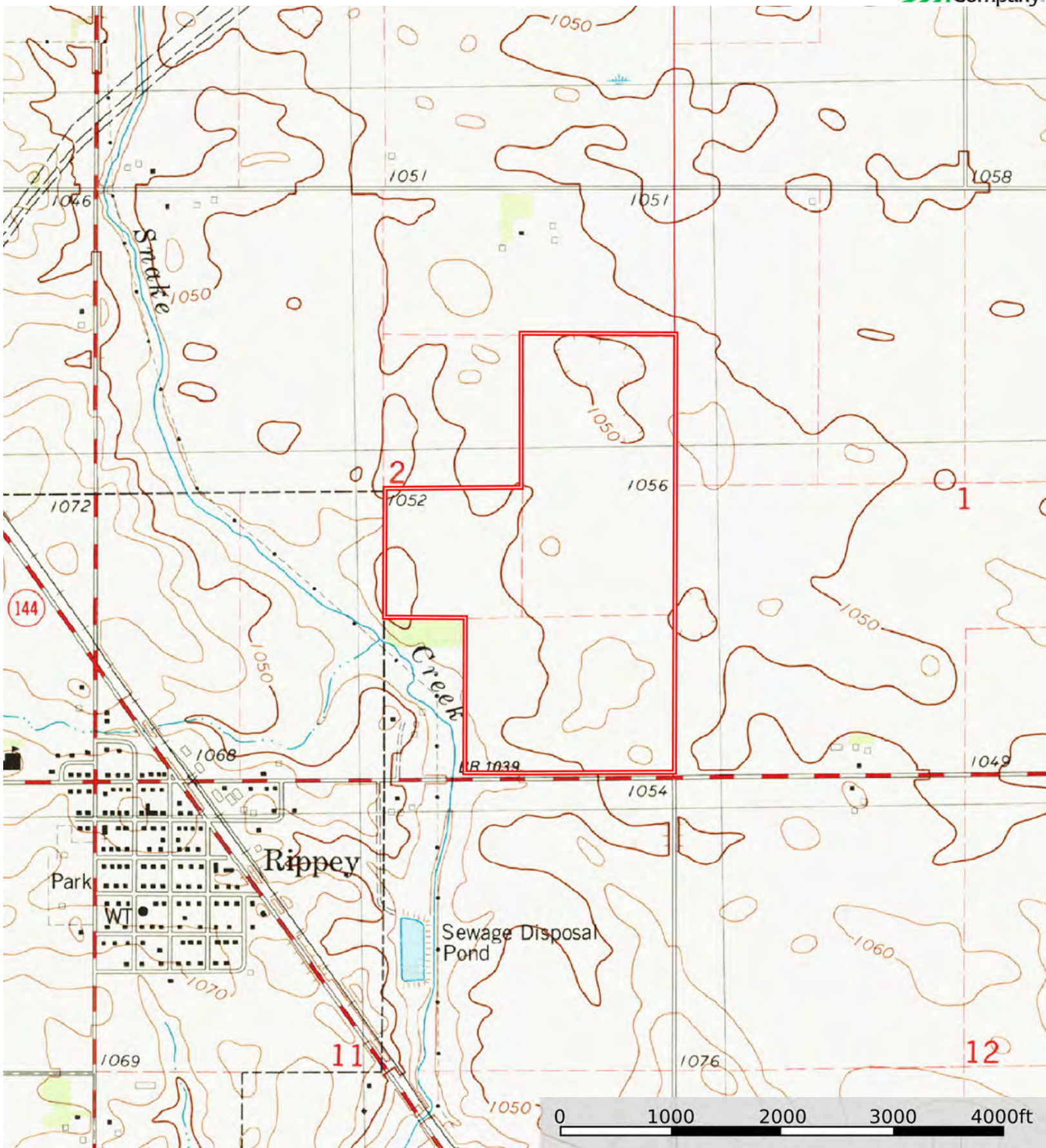
Land, Capability

								
	1	2	3	4	5	6	7	8
'Wild Life'	•	•	•	•	•	•	•	•
Forestry	•	•	•	•	•	•	•	
Limited	•	•	•	•	•	•	•	
Moderate	•	•	•	•	•	•		
Intense	•	•	•	•	•			
Limited	•	•	•	•				
Moderate	•	•	•					
Intense	•	•						
Very Intense	•							

Grazing Cultivation

(c) climatic limitations (e) susceptibility to erosion

(s) soil limitations within the rooting zone (w) excess of water



Boundary

