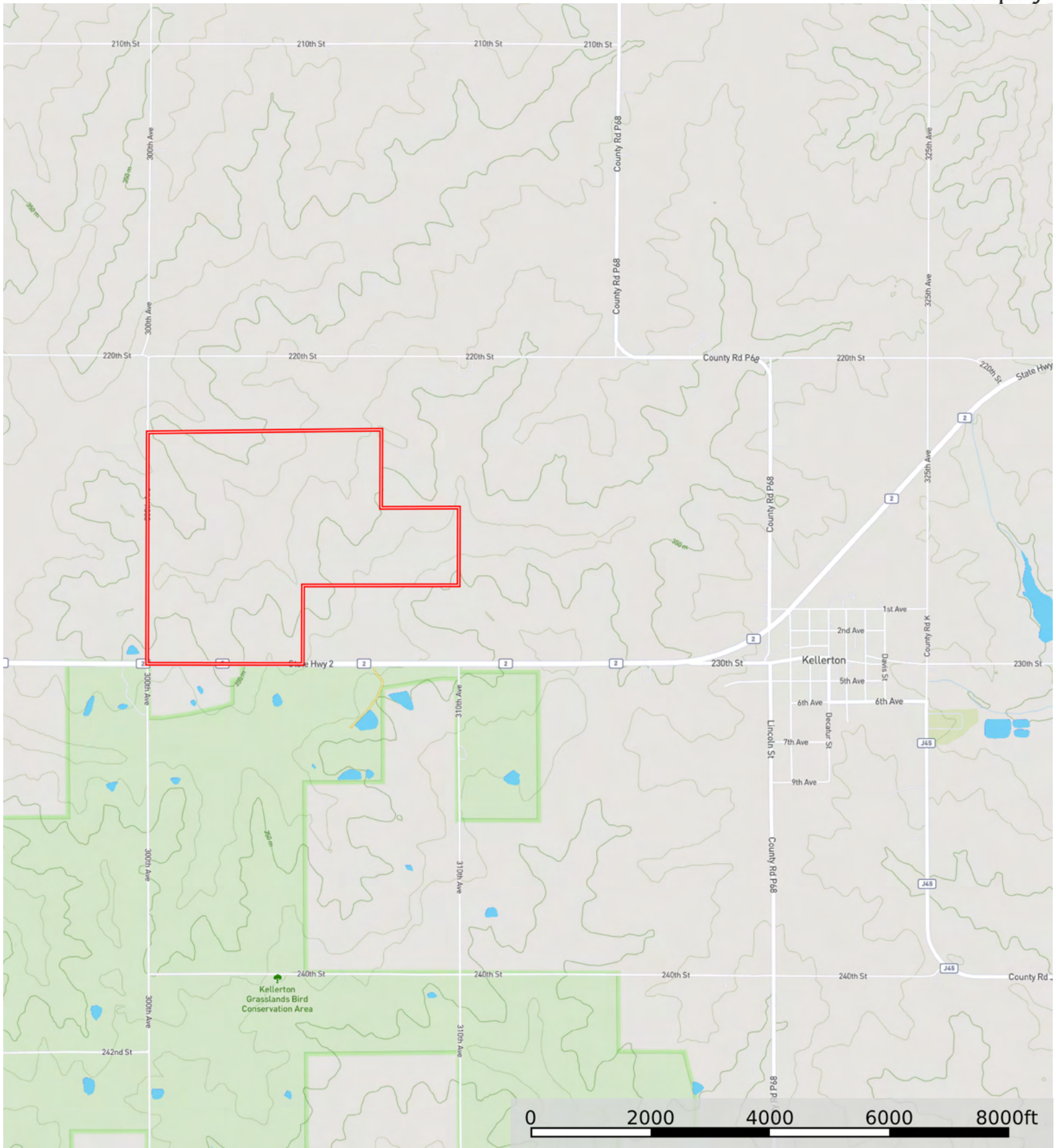
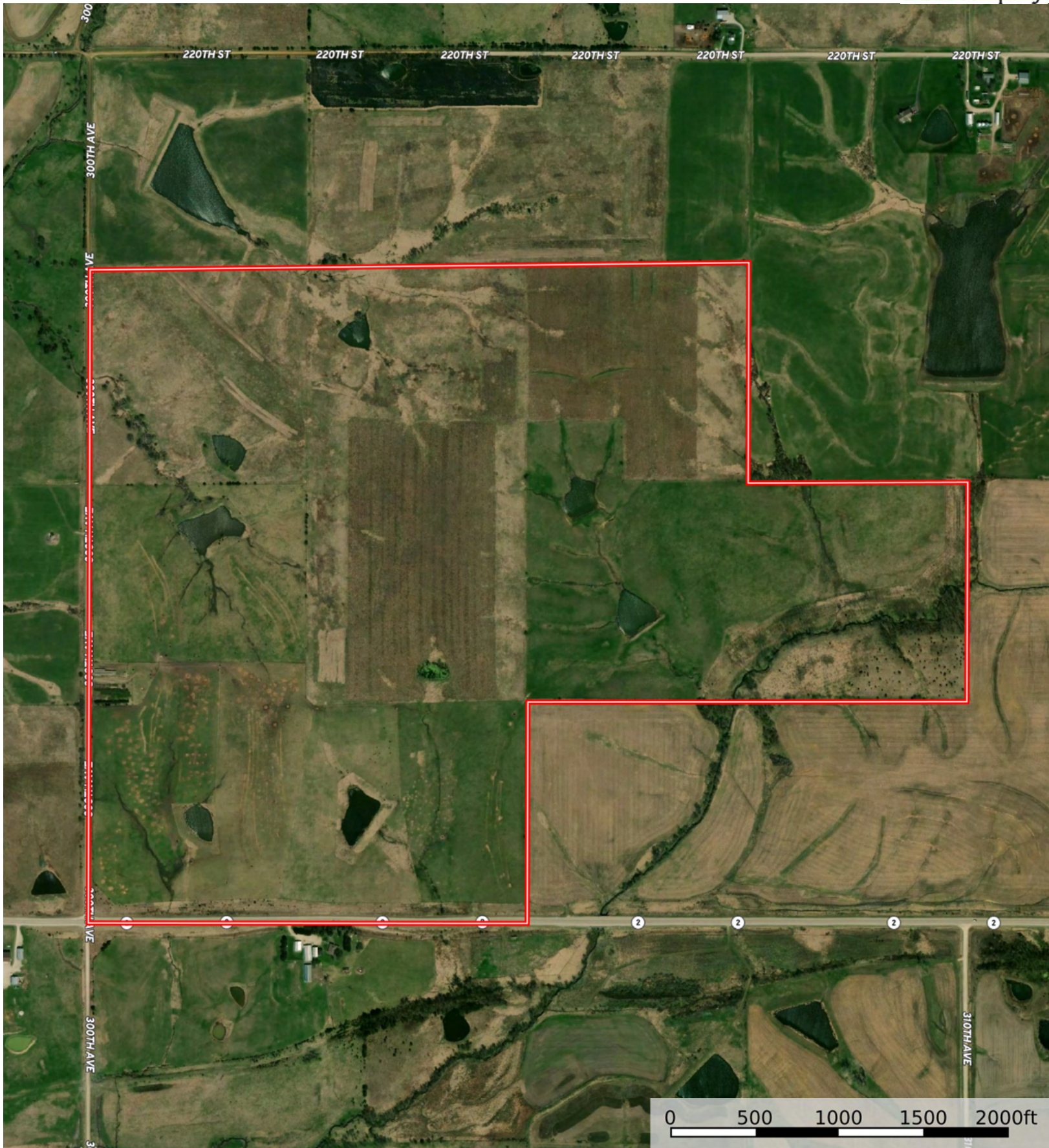


L-2500183

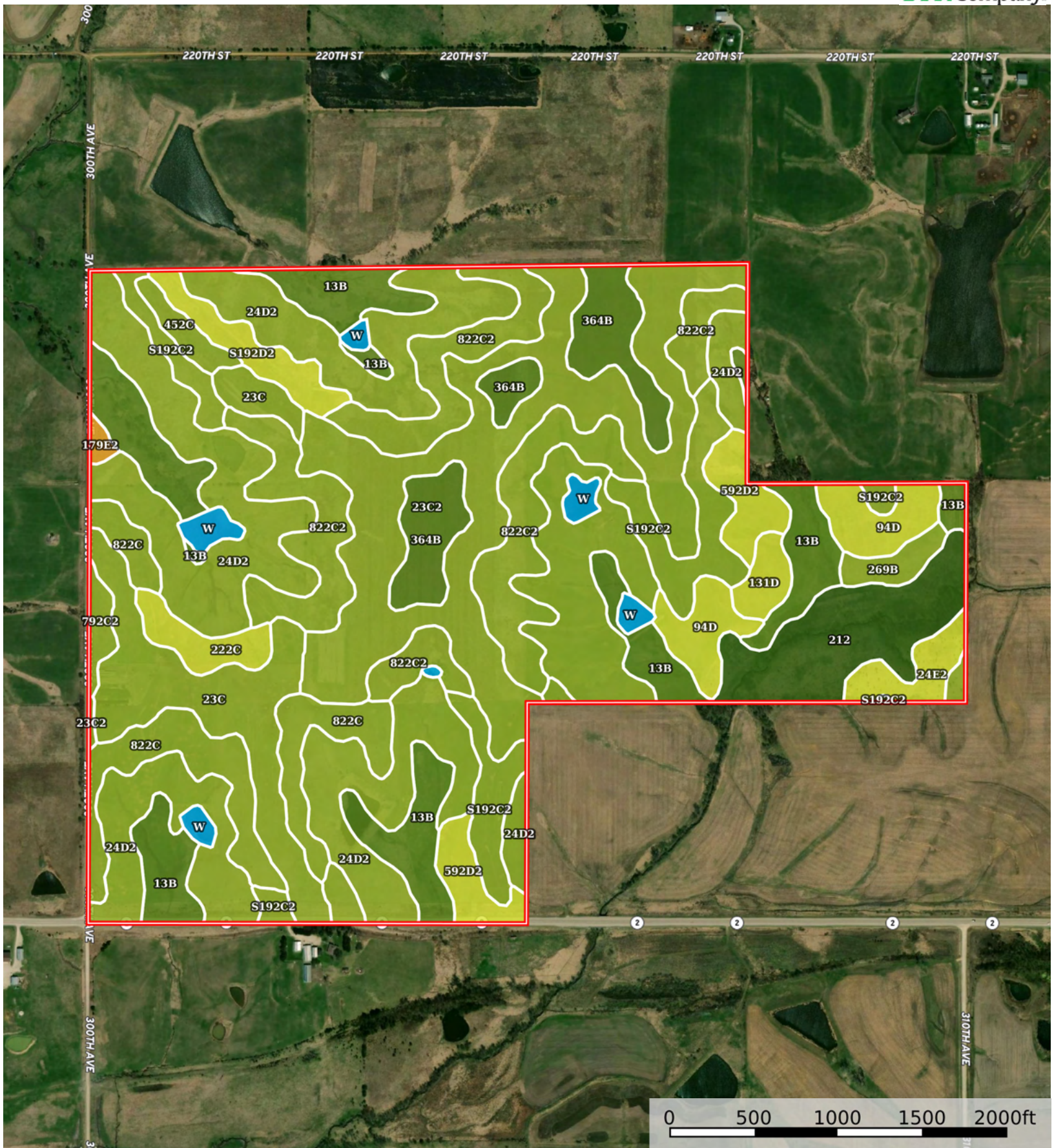
Ringgold County, Iowa, 360 AC +/-



 Boundary



 Boundary



Boundary

|  Boundary 352.02 ac

| SOIL CODE | SOIL DESCRIPTION | ACRES | % | CSR2 | CPI | NCCPI | CAP |
|-----------|--|-----------|-------|-------|-----|-------|------|
| 24D2 | Shelby clay loam, 9 to 14 percent slopes, moderately eroded | 87.75 | 24.93 | 51.0 | 0 | 71 | 3e |
| 23C2 | Arispe silty clay loam, 5 to 9 percent slopes, moderately eroded | 49.03 | 13.93 | 62.0 | 0 | 76 | 3e |
| 822C2 | Lamoni silty clay loam, 5 to 9 percent slopes, moderately eroded | 38.05 | 10.81 | 31.0 | 0 | 60 | 3e |
| 13B | Olmitz-Zook-Humeston complex, 0 to 5 percent slopes | 35.62 | 10.12 | 78.0 | 0 | 78 | 2e |
| 23C | Arispe silty clay loam, 5 to 9 percent slopes | 22.55 | 6.41 | 66.0 | 0 | 81 | 3e |
| S192C2 | Adair clay loam, heavy till, 5 to 9 percent slopes, moderately eroded | 20.94 | 5.95 | 29.0 | 0 | 67 | 3e |
| 822C | Lamoni silty clay loam, 5 to 9 percent slopes | 18.82 | 5.35 | 39.0 | 0 | 71 | 3e |
| 212 | Kennebec silt loam, 0 to 2 percent slopes | 16.55 | 4.7 | 90.0 | 0 | 94 | 1 |
| 364B | Grundy silty clay loam, 2 to 5 percent slopes | 15.17 | 4.31 | 72.0 | 0 | 80 | 2e |
| 94D | Mystic-Caleb complex, 9 to 14 percent slopes | 10.13 | 2.88 | 23.0 | 0 | 76 | 4e |
| 592D2 | Mystic clay loam, 9 to 14 percent slopes, moderately eroded | 8.37 | 2.38 | 10.0 | 0 | 67 | 4e |
| S192D2 | Adair clay loam, heavy till, 9 to 14 percent slopes, moderately eroded | 5.43 | 1.54 | 9.0 | 0 | 64 | 4e |
| W | Water | 4.71 | 1.34 | - | 0 | - | - |
| 222C | Clarinda silty clay loam, 5 to 9 percent slopes | 4.2 | 1.19 | 31.0 | 0 | 58 | 4w |
| 24E2 | Shelby clay loam, 14 to 18 percent slopes, moderately eroded | 4.19 | 1.19 | 40.0 | 0 | 67 | 4e |
| 131D | Pershing silt loam, 9 to 14 percent slopes | 2.77 | 0.79 | 41.0 | 0 | 66 | 4e |
| 269B | Humeston silty clay loam, 2 to 5 percent slopes, rarely flooded | 2.67 | 0.76 | 71.0 | 0 | 89 | 3w |
| 452C | Lineville silt loam, 5 to 9 percent slopes | 2.48 | 0.7 | 48.0 | 0 | 75 | 3e |
| 792C2 | Armstrong clay loam, 5 to 9 percent slopes, moderately eroded | 1.87 | 0.53 | 24.0 | 0 | 60 | 3e |
| 179E2 | Gara loam, 14 to 18 percent slopes, moderately eroded | 0.72 | 0.2 | 24.0 | 0 | 62 | 6e |
| TOTALS | | 352.02(*) | 100% | 51.22 | - | 71.92 | 2.87 |









(*) Total acres may differ in the second decimal compared to the sum of each acreage soil. This is due to a round error because we only show the acres of each soil with two decimal.

Capability Legend

Increased Limitations and Hazards

Decreased Adaptability and Freedom of Choice Users

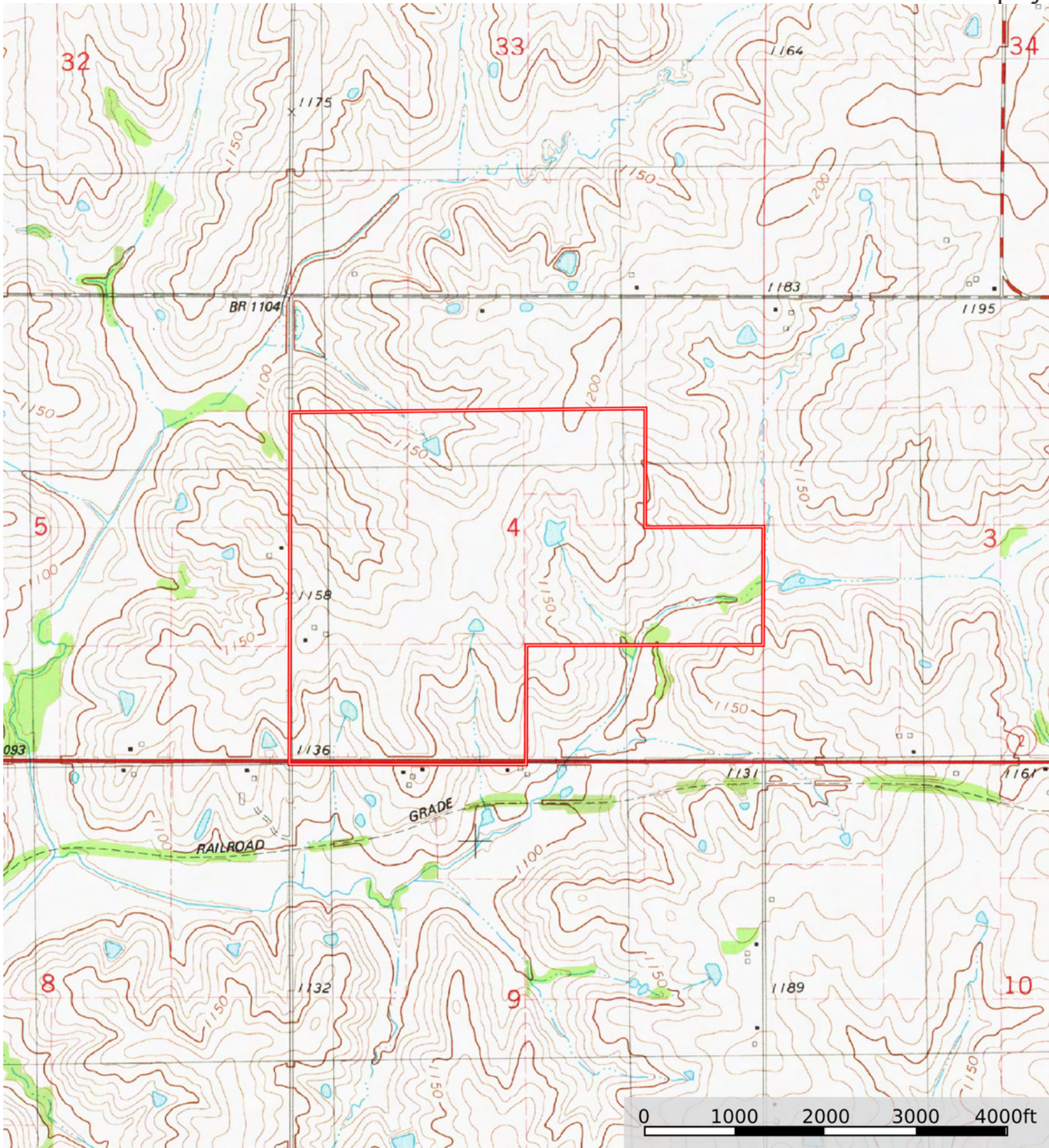
Land, Capability

| |  |  |  |  |  |  |  |  |
|--------------|---|---|---|---|--|---|---|---|
| | 1 | 2 | 3 | 4 | 5 | 6 | 7 | 8 |
| 'Wild Life' | • | • | • | • | • | • | • | • |
| Forestry | • | • | • | • | • | • | • | |
| Limited | • | • | • | • | • | • | • | |
| Moderate | • | • | • | • | • | • | | |
| Intense | • | • | • | • | • | | | |
| Limited | • | • | • | • | | | | |
| Moderate | • | • | • | | | | | |
| Intense | • | • | | | | | | |
| Very Intense | • | | | | | | | |

Grazing Cultivation

(c) climatic limitations (e) susceptibility to erosion

(s) soil limitations within the rooting zone (w) excess of water



 Boundary