 Boundary



Boundary



Boundary

| 34.31 ac

SOIL CODE	SOIL DESCRIPTION	ACRES	%	CSR2	CPI	NCCPI	CAP
179F2	Gara loam, 18 to 24 percent slopes, moderately eroded	14.12	41.14	12.0	0	54	6e
11B	Colo-Ely silty clay loams, 2 to 5 percent slopes	11.4	33.22	81.0	0	86	2w
131C2	Pershing silt loam, 5 to 9 percent slopes, moderately eroded	3.48	10.14	62.0	0	69	3e
S792D2	Armstrong loam, 9 to 14 percent slopes, moderately eroded	2.92	8.51	9.0	0	63	4e
993E2	Armstrong-Gara loams, 14 to 18 percent slopes, moderately eroded	1.73	5.04	17.0	0	65	6e
980B	Gullied land-Ely-Colo, occasionally flooded, complex, 2 to 5 percent slopes	0.66	1.92	42.0	0	10	7e
TOTALS		34.31(*)	100%	40.56	-	66.61	4.22

(*) Total acres may differ in the second decimal compared to the sum of each acreage soil. This is due to a round error because we only show the acres of each soil with two decimal.

Capability Legend

Increased Limitations and Hazards

Decreased Adaptability and Freedom of Choice Users

Land, Capability

	1	2	3	4	5	6	7	8
'Wild Life'	•	•	•	•	•	•	•	•
Forestry	•	•	•	•	•	•	•	
Limited	•	•	•	•	•	•	•	
Moderate	•	•	•	•	•	•		
Intense	•	•	•	•	•			
Limited	•	•	•	•				
Moderate	•	•	•					
Intense	•	•						
Very Intense	•							

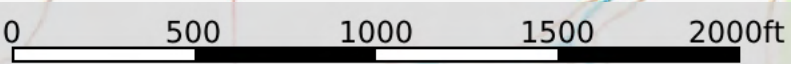
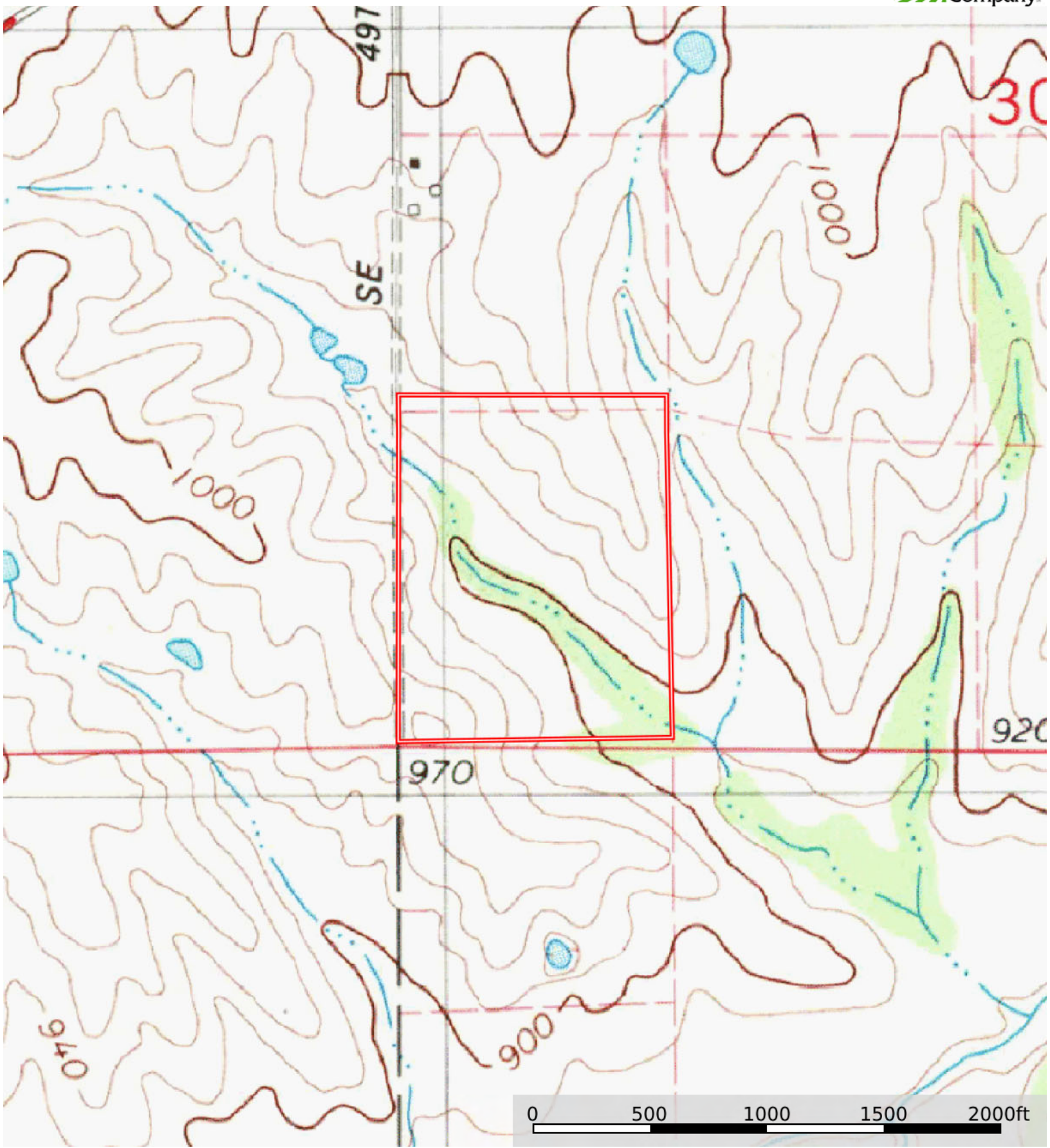
Grazing Cultivation

(c) climatic limitations (e) susceptibility to erosion

(s) soil limitations within the rooting zone (w) excess of water

L-2500498

Warren County, Iowa, 40 AC +/-



Boundary