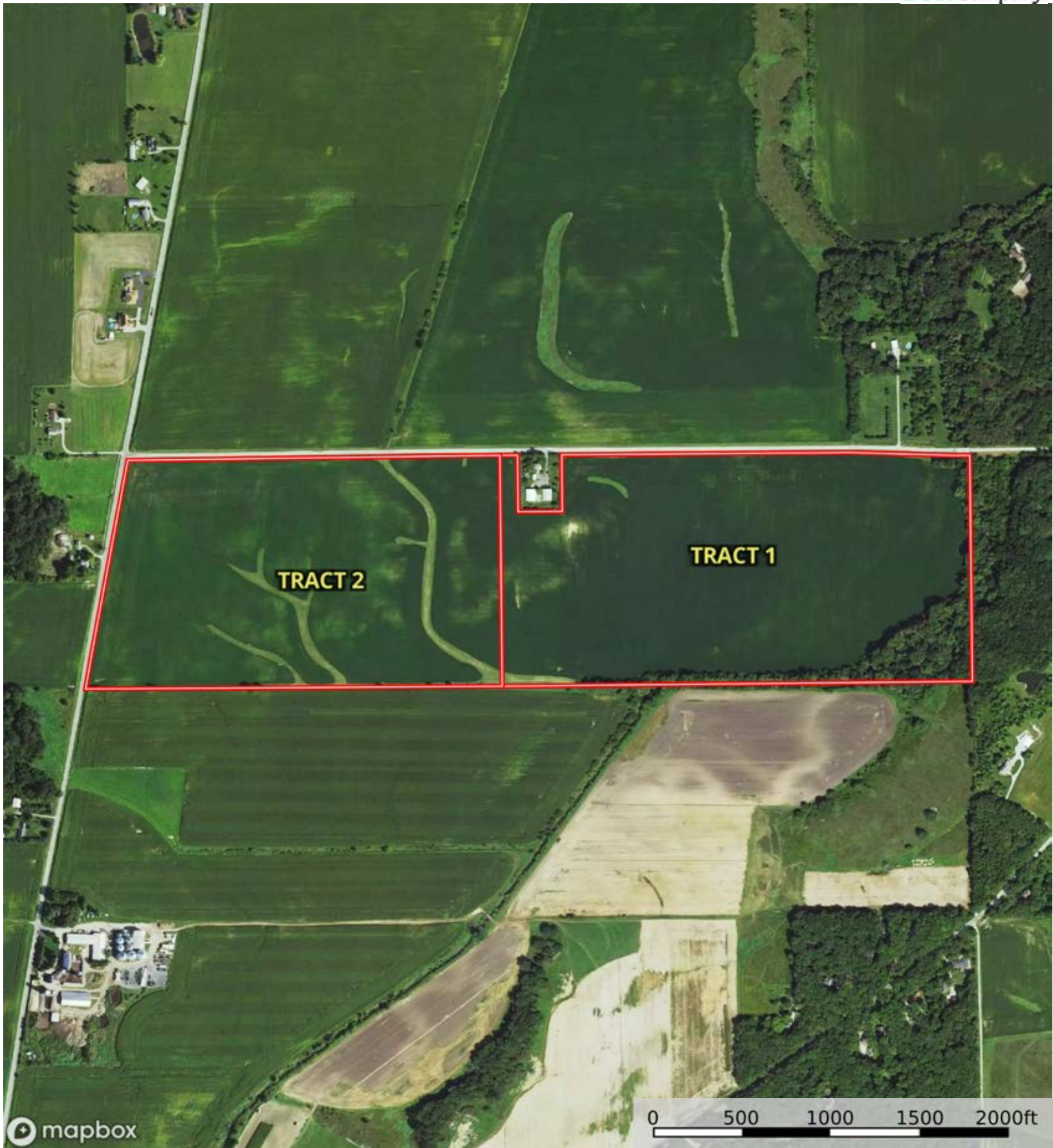




 Boundary



 Boundary





 Boundary

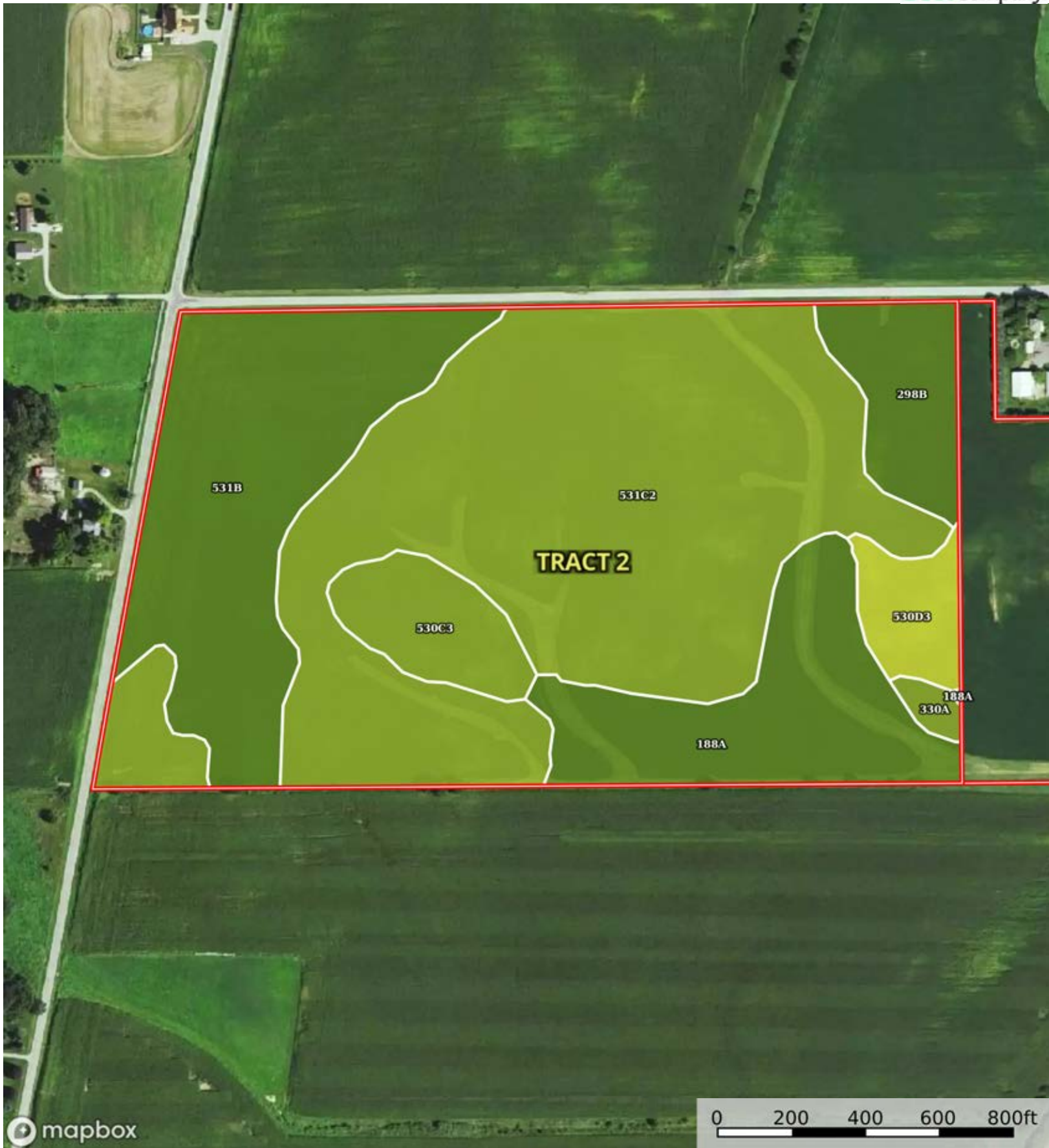
Boundary 77.6 ac

SOIL CODE	SOIL DESCRIPTION	ACRES	%	PI	NCCPI	CAP
188A	Beardstown silt loam, 0 to 2 percent slopes	20.47	26.38	114	87	2w
440B	Jasper loam, 2 to 5 percent slopes	17.55	22.62	129	78	2e
3107A	Sawmill silty clay loam, heavy till plain, 0 to 2 percent slopes, frequently flooded	15.49	19.96	139	63	3w
330A	Peotone silty clay loam, 0 to 2 percent slopes	9.84	12.68	123	63	3w
530D3	Ozaukee silty clay loam, 6 to 12 percent slopes, severely eroded	7.04	9.07	93	41	4e
298B	Beecher silt loam, 2 to 4 percent slopes	2.91	3.75	113	67	2e
570C2	Martinsville loam, 4 to 6 percent slopes, eroded	2.14	2.76	107	80	2e
440A	Jasper loam, 0 to 2 percent slopes	1.78	2.29	130	76	1
530F	Ozaukee silt loam, 20 to 30 percent slopes	0.38	0.49	83	16	6e
TOTALS		77.6(*)	100%	121.6	71.41	2.5

(\*) Total acres may differ in the second decimal compared to the sum of each acreage soil. This is due to a round error because we only show the acres of each soil with two decimal.







mapbox

0 200 400 600 800ft

Boundary

Boundary 66.61 ac

SOIL CODE	SOIL DESCRIPTION	ACRES	%	PI	NCCPI	CAP
531C2	Markham silt loam, 4 to 6 percent slopes, eroded	34.32	51.52	113	57	3e
531B	Markham silt loam, 2 to 4 percent slopes	14.07	21.12	119	64	2e
188A	Beardstown silt loam, 0 to 2 percent slopes	8.63	12.96	114	87	2w
298B	Beecher silt loam, 2 to 4 percent slopes	3.71	5.57	113	67	2e
530C3	Ozaukee silty clay loam, 4 to 6 percent slopes, severely eroded	3.2	4.8	95	47	3e
530D3	Ozaukee silty clay loam, 6 to 12 percent slopes, severely eroded	2.21	3.32	93	41	4e
330A	Peotone silty clay loam, 0 to 2 percent slopes	0.47	0.71	123	63	3w
TOTALS		66.61(*)	100%	112.94	61.95	2.64

(\*) Total acres may differ in the second decimal compared to the sum of each acreage soil. This is due to a round error because we only show the acres of each soil with two decimal.













|  Boundary 96.01 ac

SOIL CODE	SOIL DESCRIPTION	ACRES	%	PI	NCCPI	CAP
531C2	Markham silt loam, 4 to 6 percent slopes, eroded	26.34	27.44	113	57	3e
298A	Beecher silt loam, 0 to 2 percent slopes	18.39	19.16	114	67	2w
298B	Beecher silt loam, 2 to 4 percent slopes	10.47	10.91	113	67	2e
740A	Darroch silt loam, 0 to 2 percent slopes	10.46	10.9	129	76	1
294B	Symerton silt loam, 2 to 5 percent slopes	9.67	10.07	130	71	2e
779B	Chelsea loamy fine sand, 1 to 6 percent slopes	6.74	7.02	76	47	4s
440B	Jasper loam, 2 to 5 percent slopes	5.8	6.04	129	78	2e
530C3	Ozaukee silty clay loam, 4 to 6 percent slopes, severely eroded	4.94	5.15	95	47	3e
3107A	Sawmill silty clay loam, heavy till plain, 0 to 2 percent slopes, frequently flooded	3	3.13	139	63	3w
530F	Ozaukee silt loam, 20 to 30 percent slopes	0.1	0.1	83	16	6e
223B	Varna silt loam, 2 to 4 percent slopes	0.08	0.08	115	73	2e
232A	Ashkum silty clay loam, 0 to 2 percent slopes	0.02	0.02	127	66	2w
TOTALS		96.01(*)	100%	114.89	63.7	2.39









(\*) Total acres may differ in the second decimal compared to the sum of each acreage soil. This is due to a round error because we only show the acres of each soil with two decimal.

## Capability Legend

Increased Limitations and Hazards

Decreased Adaptability and Freedom of Choice Users

Land, Capability

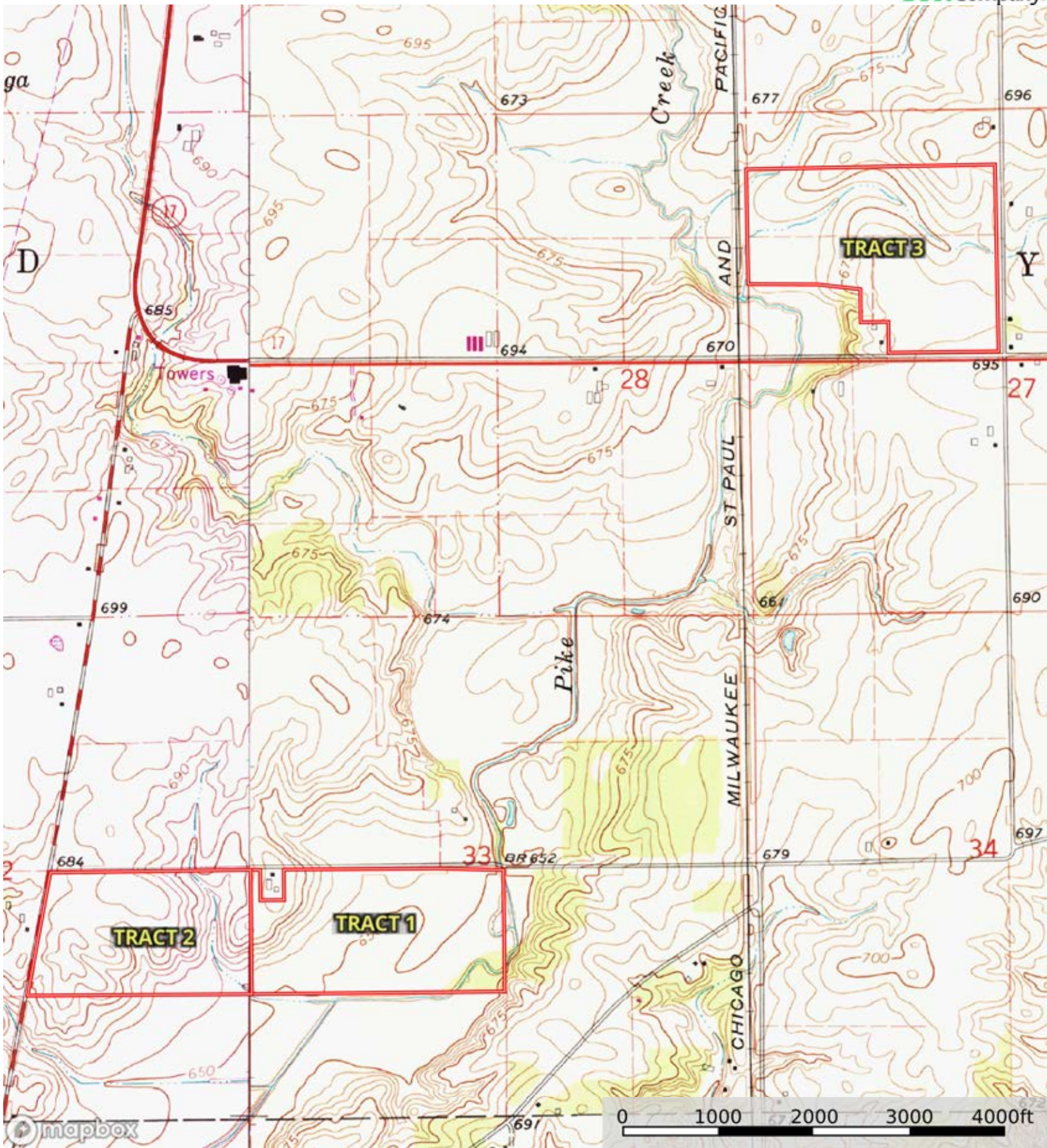
								
	1	2	3	4	5	6	7	8
'Wild Life'	•	•	•	•	•	•	•	•
Forestry	•	•	•	•	•	•	•	
Limited	•	•	•	•	•	•	•	
Moderate	•	•	•	•	•	•		
Intense	•	•	•	•	•			
Limited	•	•	•	•				
Moderate	•	•	•					
Intense	•	•						
Very Intense	•							

### Grazing Cultivation

(c) climatic limitations (e) susceptibility to erosion

(s) soil limitations within the rooting zone (w) excess of water





 Boundary