



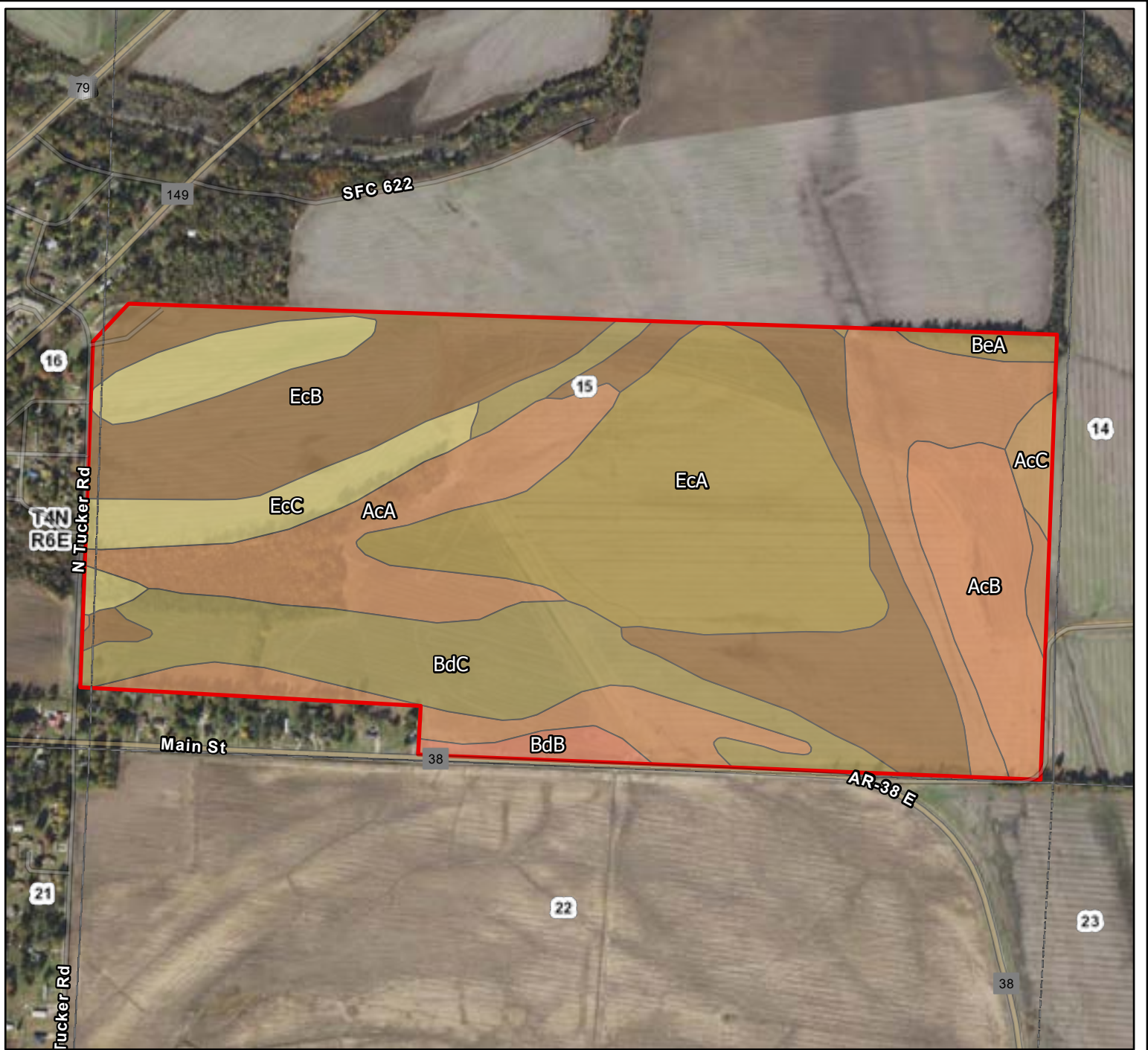
Larry Jones Trust
St Francis County, Arkansas

Latitude: 34.9527° N
Longitude: 90.4657° W
Imagery Source: USDA NAIP
Soil Data Source: USDA NRCS
Boundaries are Approximate



Larry Jones Trust
St Francis County, Arkansas

Latitude: 34.9518° N
Longitude: 90.4527° W
Imagery Source: USDA NAIP
Soil Data Source: USDA NRCS
Boundaries are Approximate

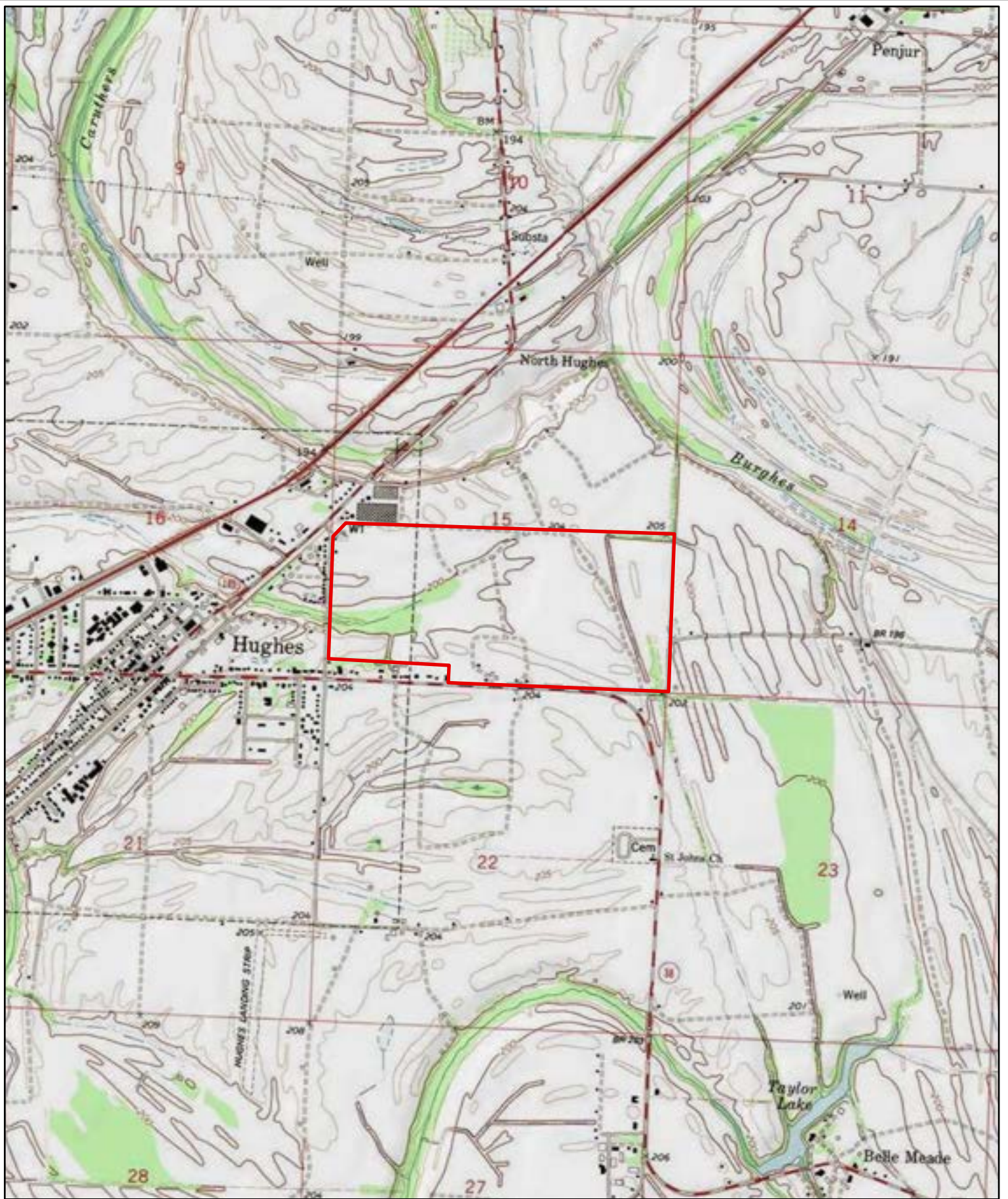


Map Symbol	Name	Non-IRR LCC	ACRES
EcB	Earle clay, gently undulating	3w	70.2
AcA	Alligator and Sharkey clays, 0 to 1 percent slopes	3w	64.6
EcA	Earle clay, 0 to 1 percent slopes	3w	62.1
BdC	Bosket-Dubbs fine sandy loam, undulating	3e	40.9
EcC	Earle clay, undulating	3w	24
AcB	Alligator and Sharkey clays, gently undulating	3w	19.7
BdB	Bosket-Dubbs fine sandy loam, gently undulating	2e	3.6
AcC	Alligator and Sharkey clays, undulating	3e	3.1
BeA	Bowdre silty clay, 0 to 1 percent slopes	2w	2.7
TOTAL			290.9



Larry Jones Trust
St Francis County, Arkansas

Latitude: 34.952° N
 Longitude: 90.4526° W
 Imagery Source: USDA NAIP
 Soil Data Source: USDA NRCS
 Boundaries are Approximate



Larry Jones Trust
St Francis County, Arkansas

Latitude: 34.952°N
Longitude: 90.4526°W
Imagery Source: USDA NAIP
Soil Data Source: USDA NRCS
Boundaries are Approximate