



Larry Schaeffer

319.9 Acres



Farmers National Company

Comments

Dickey County, ND



Property Overview



319.9 Acres, 1 Boundary



Property Overview - Boundary

Dickey County, ND

319.9 Acres, Boundary 1 of 1



Dickey County, ND
Township: 131N

Locations
12 131N 61W

Acres
319.92



65.6 / 100 CPI

	Code	Soil Description	% of Selection	Acres	Non-IRR Class	IRR Class	State Score (CPI)
●	G11...	Hamerly-Tonka-Parnell complex, 0 to 3 percent slopes	33.5%	107.2	2e	--	55.32
●	G14...	Barnes-Svea loams, 3 to 6 percent slopes	28.6%	91.6	2e	--	78.79
●	G14...	Barnes-Svea loams, 0 to 3 percent slopes	17.8%	56.9	2c	--	85.43
●	G14...	Barnes-Buse-Langhei loams, 6 to 9 percent slopes	9.1%	29	4e	--	56.88
●	G4A	Southam silty clay loam, 0 to 1 percent slopes	5.3%	17	8w	--	10.9

Soils

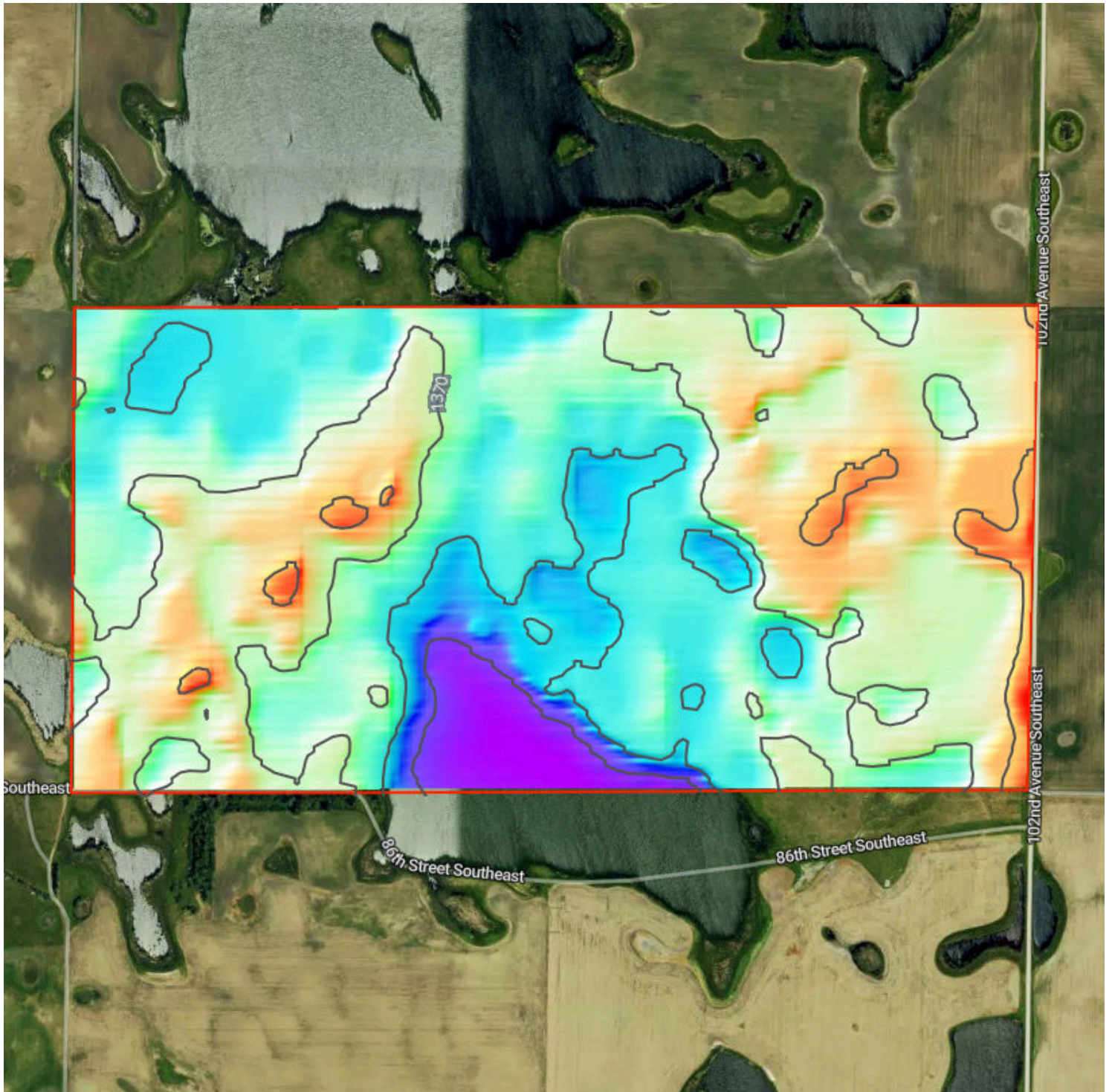


319.9 Acres, 1 Boundary

	Code	Soil Description	% of Selection	Acres	Non-IRR Class	IRR Class	State Score (CPI)
●	G68...	Barnes-Sioux complex, 3 to 9 percent slopes	3.2%	10.1	2e	--	54.81
●	G14...	Barnes-Buse loams, 3 to 6 percent slopes	1.6%	5.2	3e	--	71.42
●	G12...	Barnes-Cresbard loams, 3 to 6 percent slopes	0.9%	2.8	2e	--	75.8

Elevation

319.9 Acres, 1 Boundary



1,347.2 feet

1,386.7 feet

Source: USGS 3 Meter Dem

Interval: 10 feet

Range: 39.5 feet

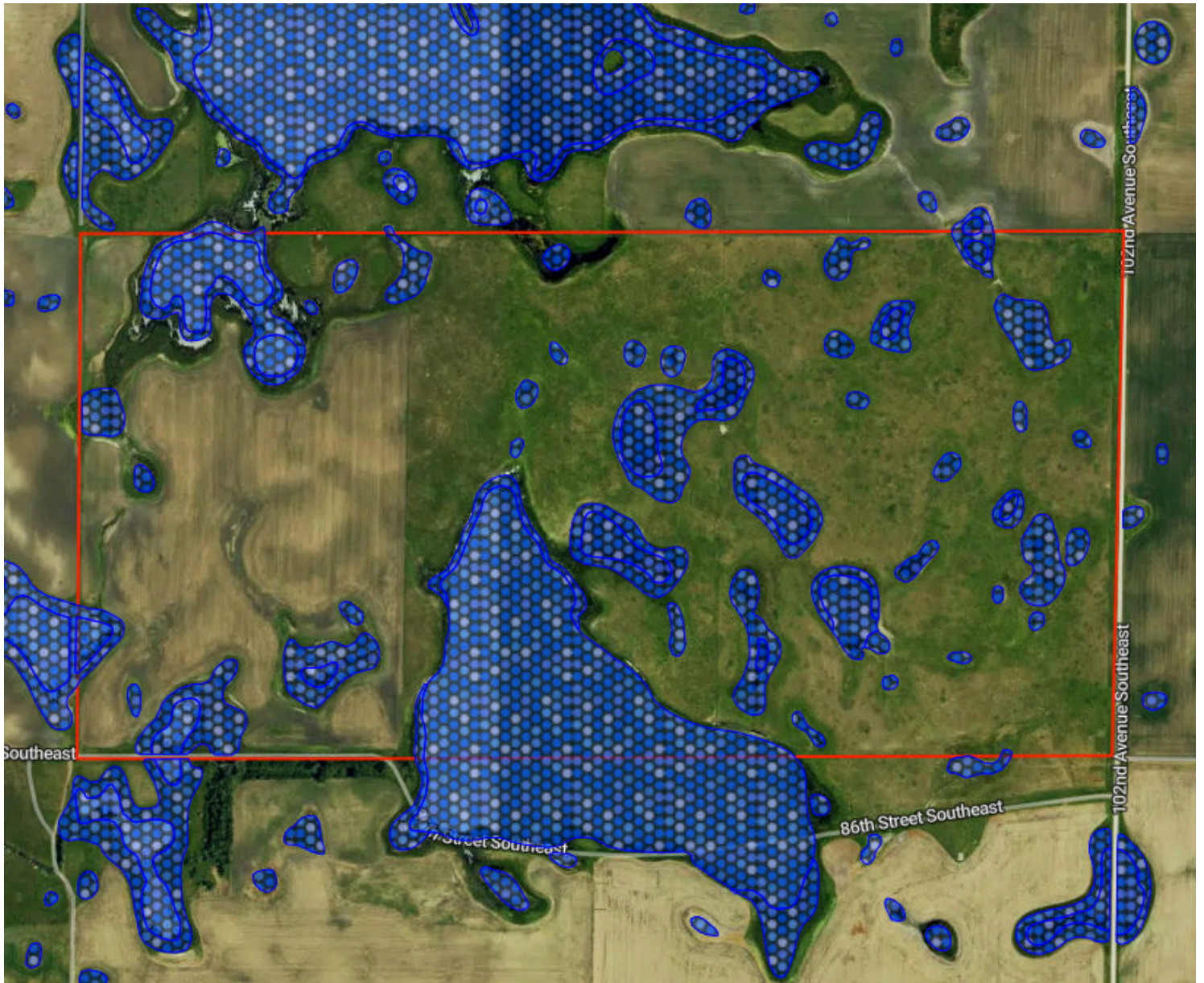
Min: 1347.2 feet

Max: 1386.7 feet









Slope: 2.2%

Min: 0%

Max: 16.9%



Flood Zone Hazard

-  0.2% annual flood hazard
-  1% annual flood hazard
-  Future 1% annual flood hazard
-  Increased risk due to levee
-  Reduced risk due to levee
-  Regulatory Floodway
-  Special Floodway
-  Wetlands