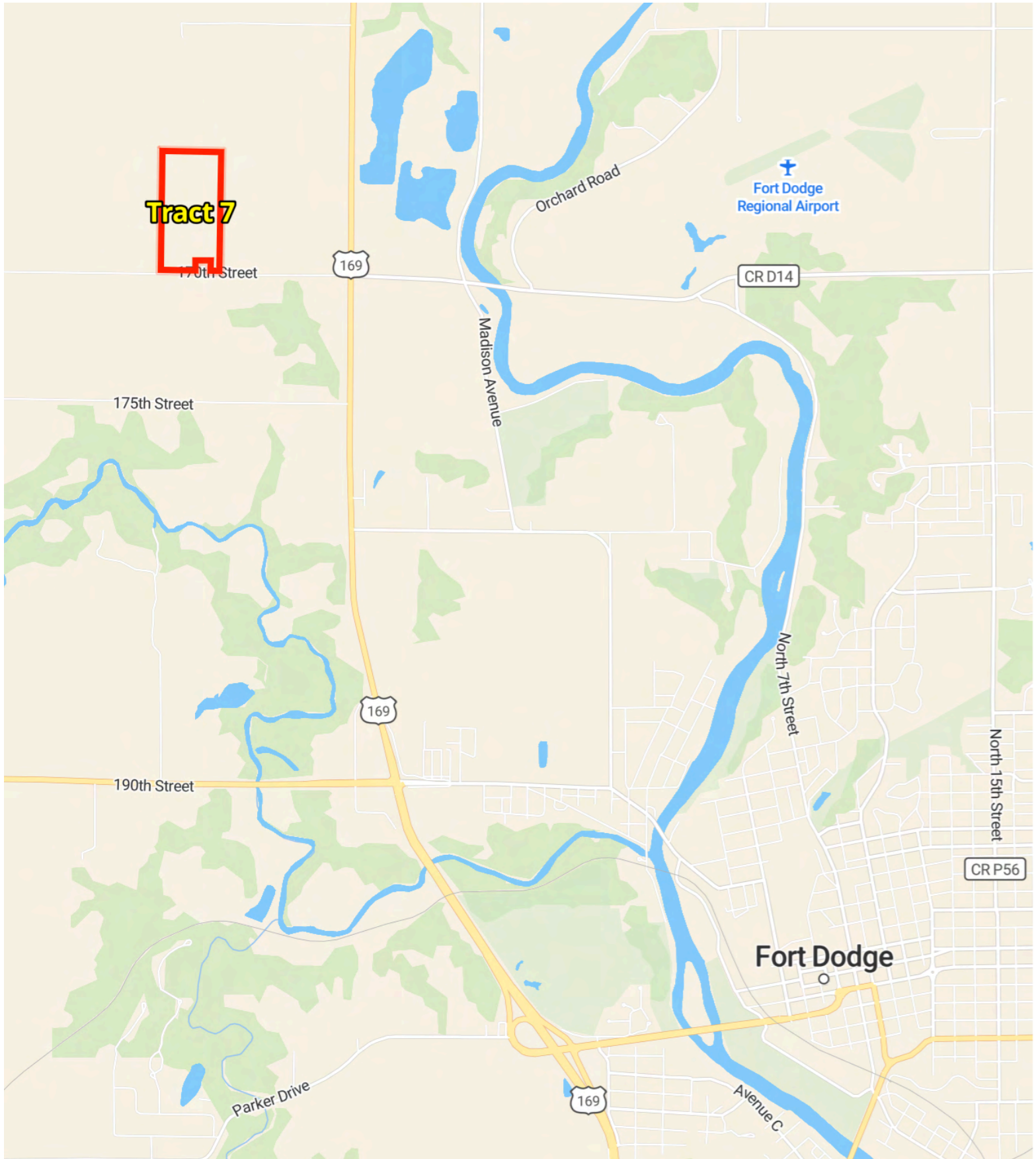


Tracts 1-6



Tract 7



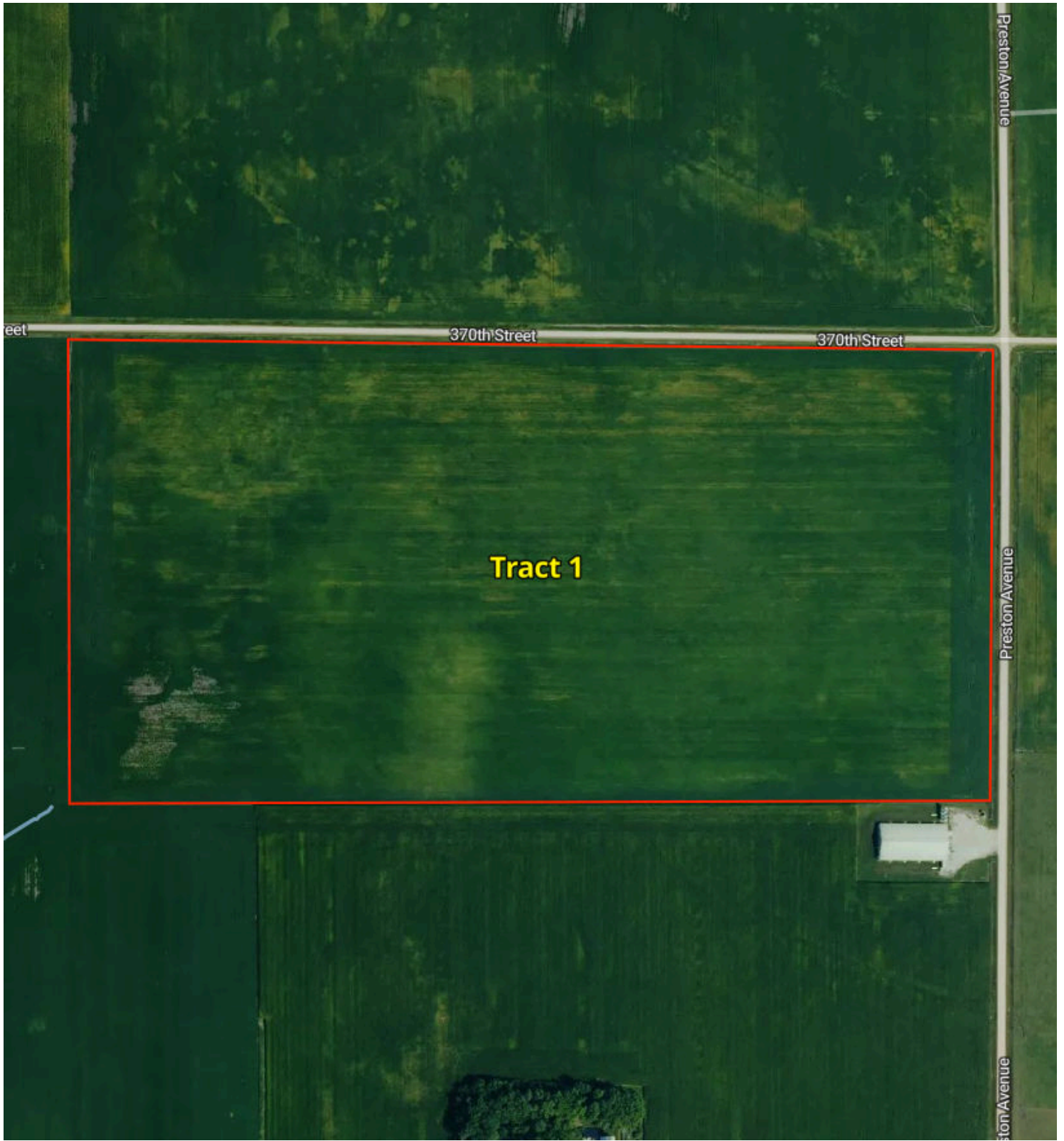
Tract 8



Property Overview

Calhoun County, IA

78.4 Acres, Boundary 2 of 8



Calhoun County, IA
Township: 086N

Locations
19 86N 32W

Acres
78.39

Soils by Boundary

78.4 Acres, Boundary 3 of 8



86.9 / 100 CSR2

	Code	Soil Description	% of Selection	Acres	Non-IRR Class	IRR Class	State Score (CSR2)
●	107	Webster clay loam, 0 to 2 percent slopes	43.4%	34	2w	--	86
●	55	Nicollet clay loam, 1 to 3 percent slopes	36.9%	29	1	--	89
●	138B	Clarion loam, 2 to 6 percent slopes	12.8%	10	2e	--	89
●	507	Canisteo clay loam, 0 to 2 percent slopes	3.8%	3	2w	--	84
●	95	Harps clay loam, 0 to 2 percent slopes	2.7%	2.1	2w	--	72

Soils

78.4 Acres, Boundary 3 of 8

	Code	Soil Description	% of Selection	Acres	Non-IRR Class	IRR Class	State Score (CSR2)
●	6	Okoboji silty clay loam, 0 to 1 percent slopes	0.4%	0.3	3w	--	59

Property Overview

Calhoun County, IA

77.7 Acres, Boundary 3 of 8



Calhoun County, IA
Township: 086N

Locations
21 86N 32W

Acres
77.72

Soils by Boundary

77.7 Acres, Boundary 4 of 8



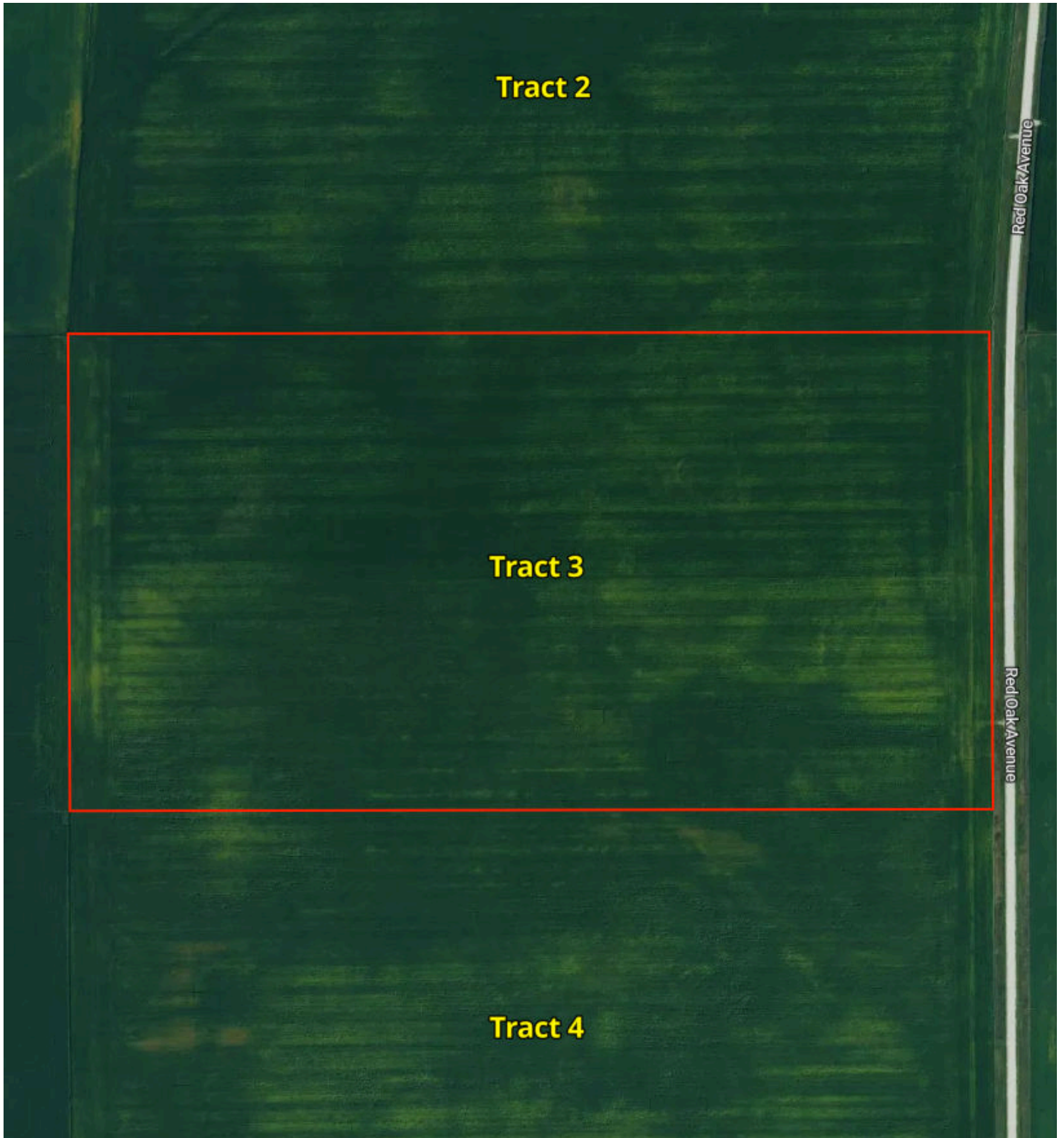
87.1 / 100 CSR2

	Code	Soil Description	% of Selection	Acres	Non-IRR Class	IRR Class	State Score (CSR2)
●	138B	Clarion loam, 2 to 6 percent slopes	39.1%	30.4	2e	--	89
●	55	Nicollet clay loam, 1 to 3 percent slopes	24.6%	19.1	1	--	89
●	507	Canisteo clay loam, 0 to 2 percent slopes	23.9%	18.6	2w	--	84
●	107	Webster clay loam, 0 to 2 percent slopes	11.1%	8.6	2w	--	86
●	6	Okoboji silty clay loam, 0 to 1 percent slopes	1.4%	1.1	3w	--	59

Property Overview

Calhoun County, IA

77.9 Acres, Boundary 4 of 8



Calhoun County, IA
Township: 086N

Locations
21 86N 32W

Acres
77.90

Soils by Boundary

77.9 Acres, Boundary 5 of 8



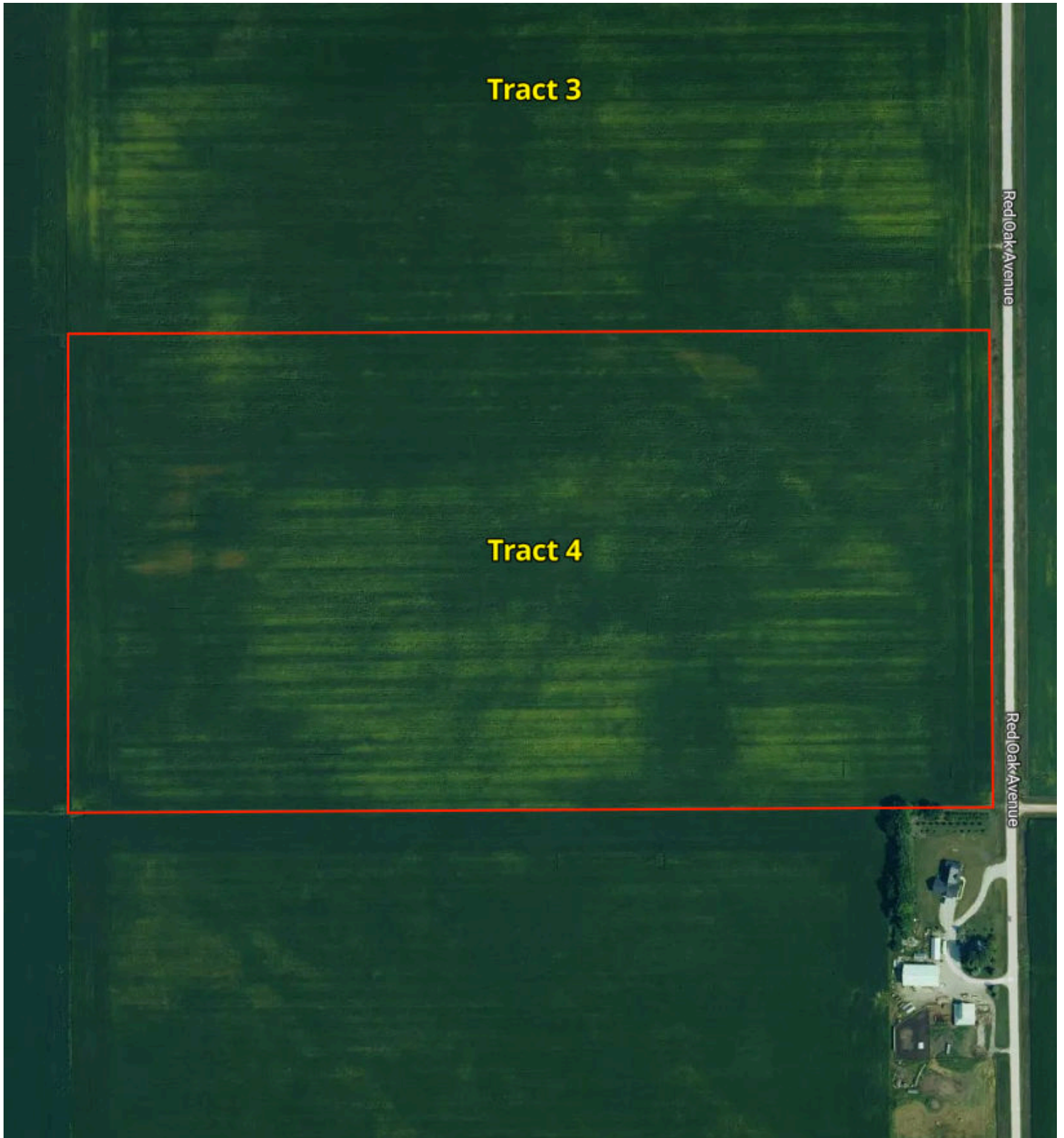
86.8 / 100 CSR2

	Code	Soil Description	% of Selection	Acres	Non-IRR Class	IRR Class	State Score (CSR2)
●	107	Webster clay loam, 0 to 2 percent slopes	57.5%	44.8	2w	--	86
●	138B	Clarion loam, 2 to 6 percent slopes	28.3%	22.1	2e	--	89
●	55	Nicollet clay loam, 1 to 3 percent slopes	8.2%	6.4	1	--	89
●	507	Canisteo clay loam, 0 to 2 percent slopes	5.2%	4	2w	--	84
●	6	Okoboji silty clay loam, 0 to 1 percent slopes	0.8%	0.6	3w	--	59

Property Overview

Calhoun County, IA

78.1 Acres, Boundary 5 of 8



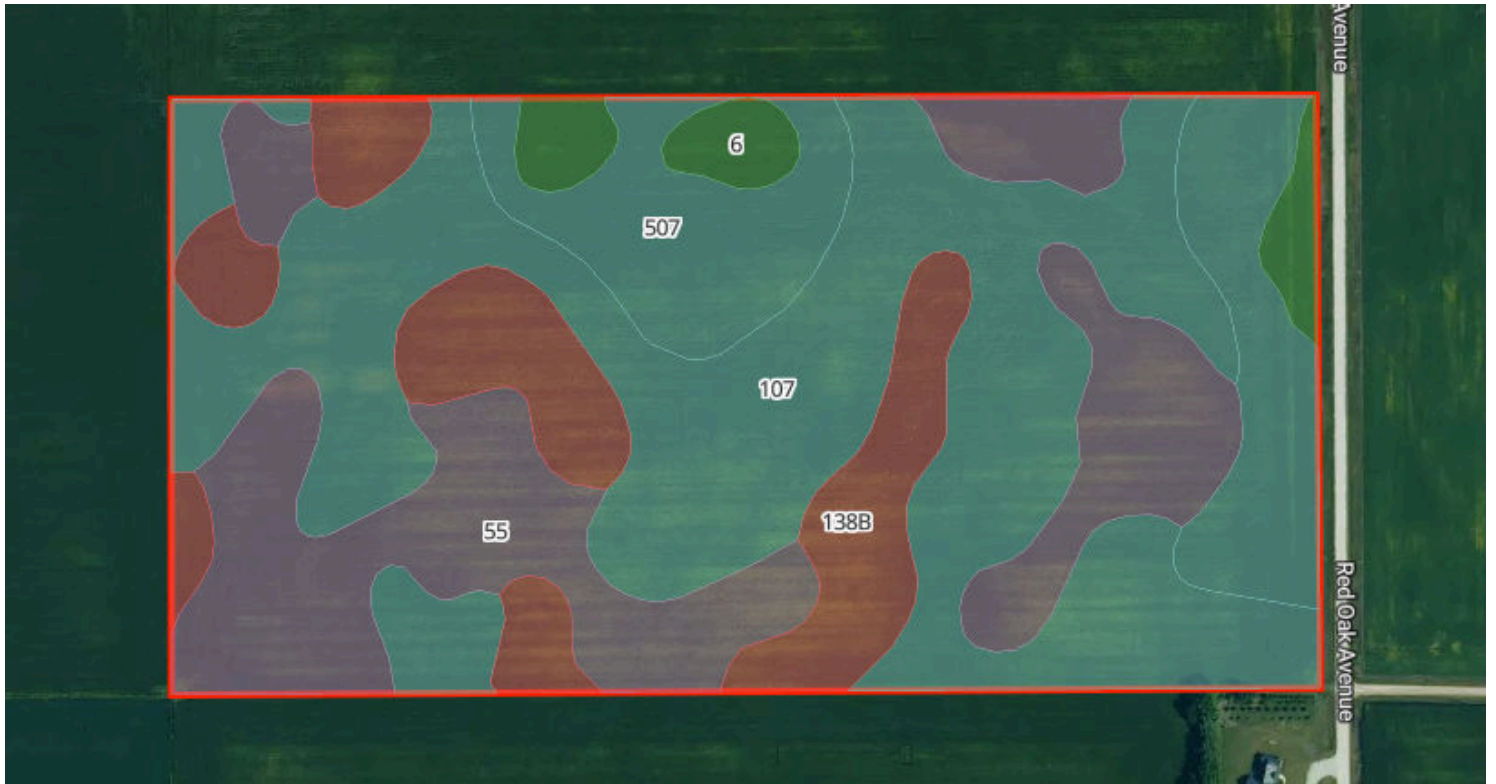
Calhoun County, IA
Township: 086N

Locations
21 86N 32W

Acres
78.13

Soils by Boundary

78.1 Acres, Boundary 6 of 8



85.9 / 100 CSR2

	Code	Soil Description	% of Selection	Acres	Non-IRR Class	IRR Class	State Score (CSR2)
●	107	Webster clay loam, 0 to 2 percent slopes	42.3%	33	2w	--	86
●	55	Nicollet clay loam, 1 to 3 percent slopes	24.5%	19.1	1	--	89
●	507	Canisteo clay loam, 0 to 2 percent slopes	14.9%	11.7	2w	--	84
●	138B	Clarion loam, 2 to 6 percent slopes	14.6%	11.4	2e	--	89
●	6	Okoboji silty clay loam, 0 to 1 percent slopes	3.7%	2.9	3w	--	59

Property Overview

Calhoun County, IA

79.0 Acres, Boundary 6 of 8



Calhoun County, IA
Township: 086N

Locations
22 86N 32W

Acres
78.97

Soils by Boundary

79 Acres, Boundary 7 of 8



82.9 / 100 CSR2

	Code	Soil Description	% of Selection	Acres	Non-IRR Class	IRR Class	State Score (CSR2)
●	107	Webster clay loam, 0 to 2 percent slopes	48.2%	38	2w	--	86
●	507	Canisteo clay loam, 0 to 2 percent slopes	16.6%	13.1	2w	--	84
●	55	Nicollet clay loam, 1 to 3 percent slopes	15.7%	12.4	1	--	89
●	95	Harps clay loam, 0 to 2 percent slopes	9.4%	7.4	2w	--	72
●	6	Okoboji silty clay loam, 0 to 1 percent slopes	7.5%	5.9	3w	--	59

Soils

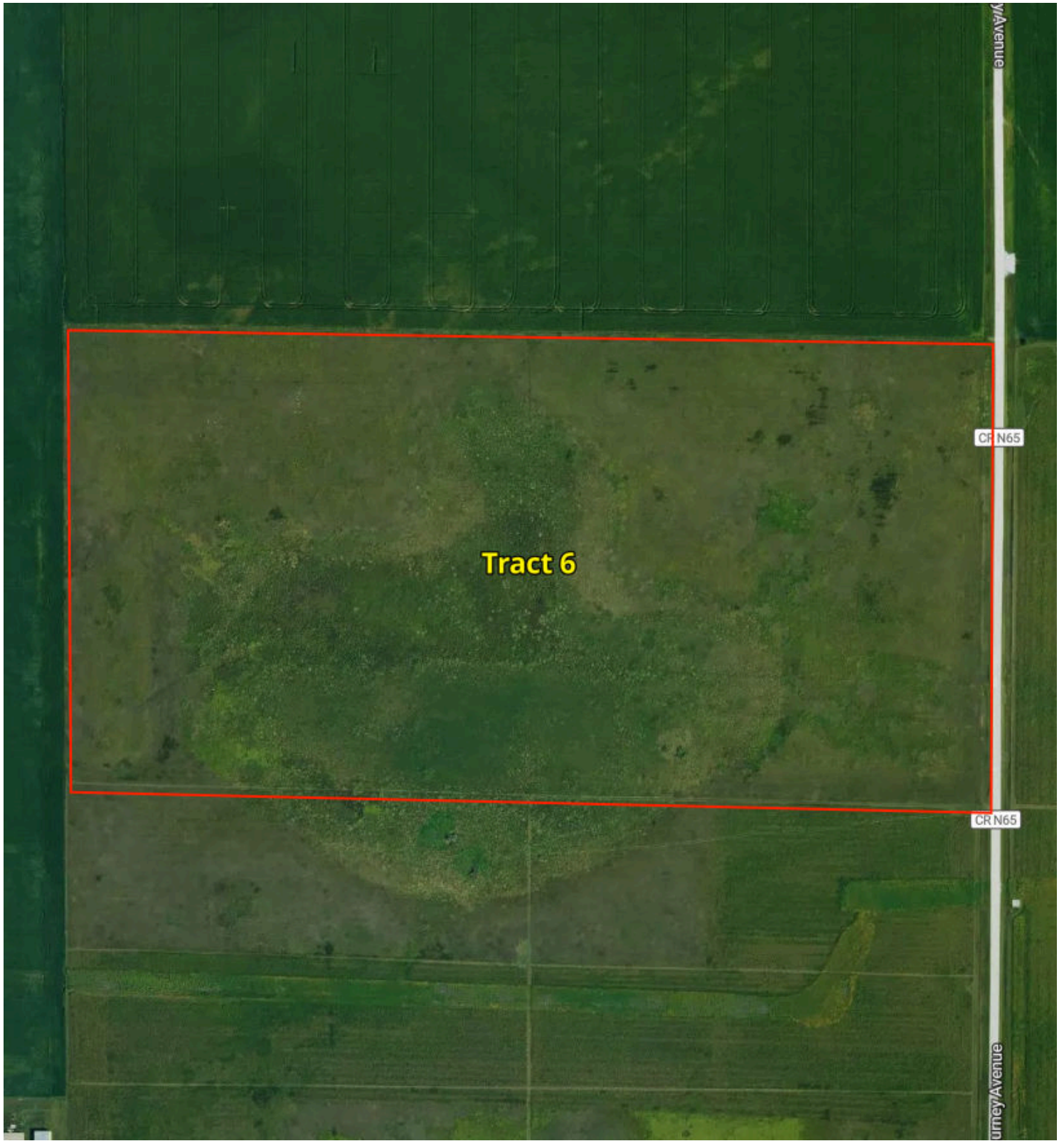
79 Acres, Boundary 7 of 8

	Code	Soil Description	% of Selection	Acres	Non-IRR Class	IRR Class	State Score (CSR2)
●	138B	Clarion loam, 2 to 6 percent slopes	2.6%	2.1	2e	--	89

Property Overview

Calhoun County, IA

79.3 Acres, Boundary 1 of 8



Calhoun County, IA
Township: 086N

Locations
03 86N 32W

Acres
79.34

Soils by Boundary

79.3 Acres, Boundary 1 of 8



74.1 / 100 CSR2

	Code	Soil Description	% of Selection	Acres	Non-IRR Class	IRR Class	State Score (CSR2)
●	507	Canisteo clay loam, 0 to 2 percent slopes	25.5%	20.3	2w	--	84
●	6	Okoboji silty clay loam, 0 to 1 percent slopes	19.0%	15	3w	--	59
●	506	Wacousta silty clay loam, 0 to 1 percent slopes	13.1%	10.4	3w	--	74
●	90	Okoboji mucky silt loam, 0 to 1 percent slope	11.1%	8.8	3w	--	55
●	107	Webster clay loam, 0 to 2 percent slopes	9.1%	7.2	2w	--	86

Soils

79.3 Acres, Boundary 1 of 8

	Code	Soil Description	% of Selection	Acres	Non-IRR Class	IRR Class	State Score (CSR2)
●	95	Harps clay loam, 0 to 2 percent slopes	8.2%	6.5	2w	--	72
●	55	Nicollet clay loam, 1 to 3 percent slopes	7.3%	5.8	1	--	89
●	138B	Clarion loam, 2 to 6 percent slopes	5.3%	4.2	2e	--	89
●	108B	Wadena loam, 2 to 6 percent slopes	1.5%	1.2	2e	--	52

Property Overview

Webster County, IA

77.8 Acres, Boundary 7 of 8



Webster County, IA
Township: 089N

Locations
02 89N 29W

Acres
77.83

Soils by Boundary

77.8 Acres, Boundary 8 of 8



77.6 / 100 CSR2

	Code	Soil Description	% of Selection	Acres	Non-IRR Class	IRR Class	State Score (CSR2)
●	107	Webster clay loam, 0 to 2 percent slopes	43.4%	33.7	2w	--	86
●	138...	Clarion loam, 6 to 10 percent slopes, moderately eroded	22.5%	17.5	3e	--	83
●	138B	Clarion loam, 2 to 6 percent slopes	12.4%	9.6	2e	--	89
●	108B	Wadena loam, 2 to 6 percent slopes	7.6%	5.9	2e	--	52
●	835...	Omsrud-Storden complex, 10 to 16 percent slopes,...	3.9%	3	4e	--	53

Soils

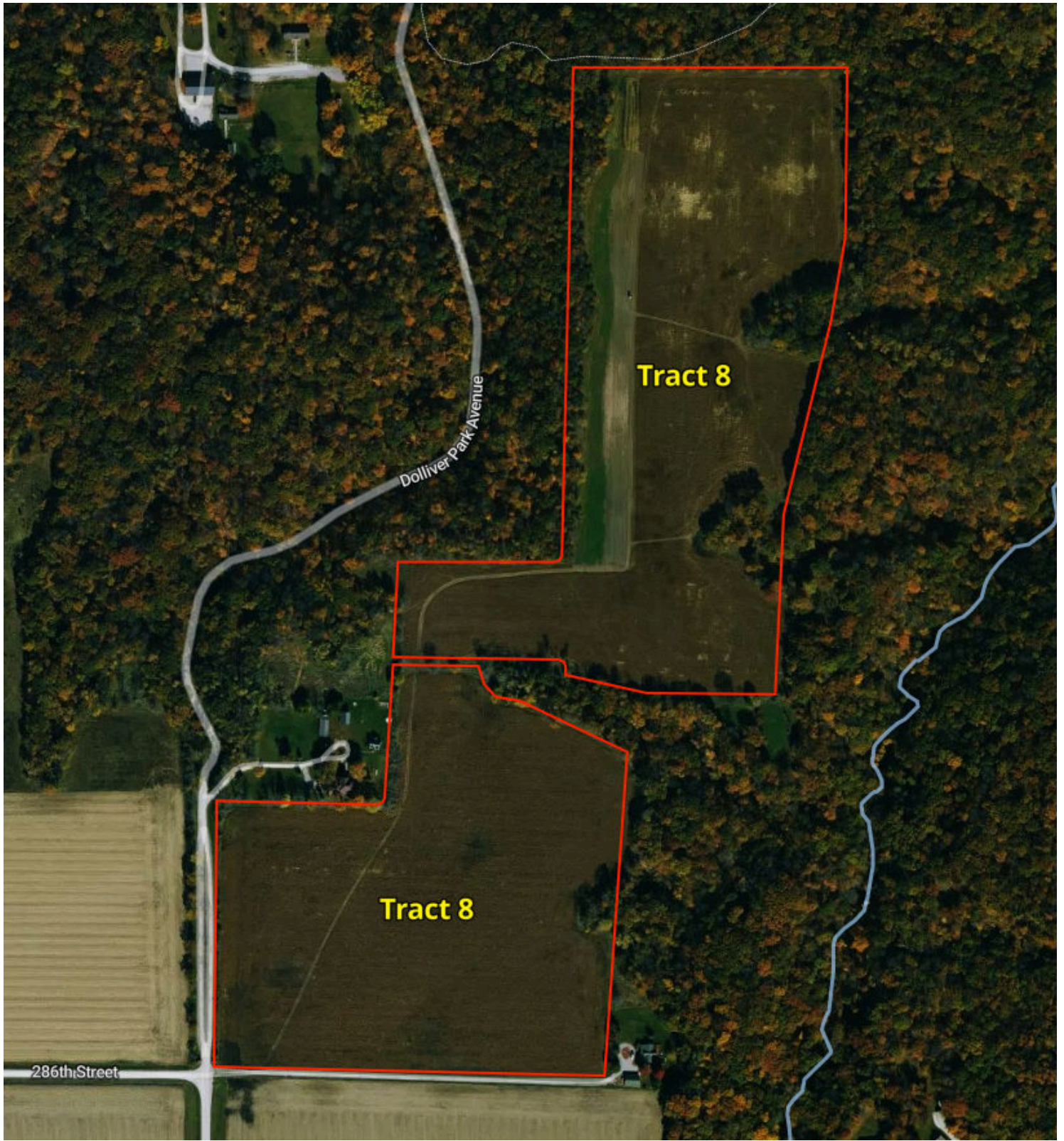
77.8 Acres, Boundary 8 of 8

	Code	Soil Description	% of Selection	Acres	Non-IRR Class	IRR Class	State Score (CSR2)
●	6	Okoboji silty clay loam, 0 to 1 percent slopes	3.3%	2.6	3w	--	59
●	262G	Lester-Belview complex, 22 to 40 percent slopes	3.3%	2.6	7e	--	9
●	259	Biscay clay loam, 0 to 2 percent slopes	2.2%	1.7	2w	--	52
●	55	Nicollet clay loam, 1 to 3 percent slopes	1.3%	1	1	--	89
●	108	Wadena loam, 0 to 2 percent slopes	0.2%	0.1	2s	--	56

Property Overview

Webster County, IA

56.1 Acres, Boundary 8 of 8



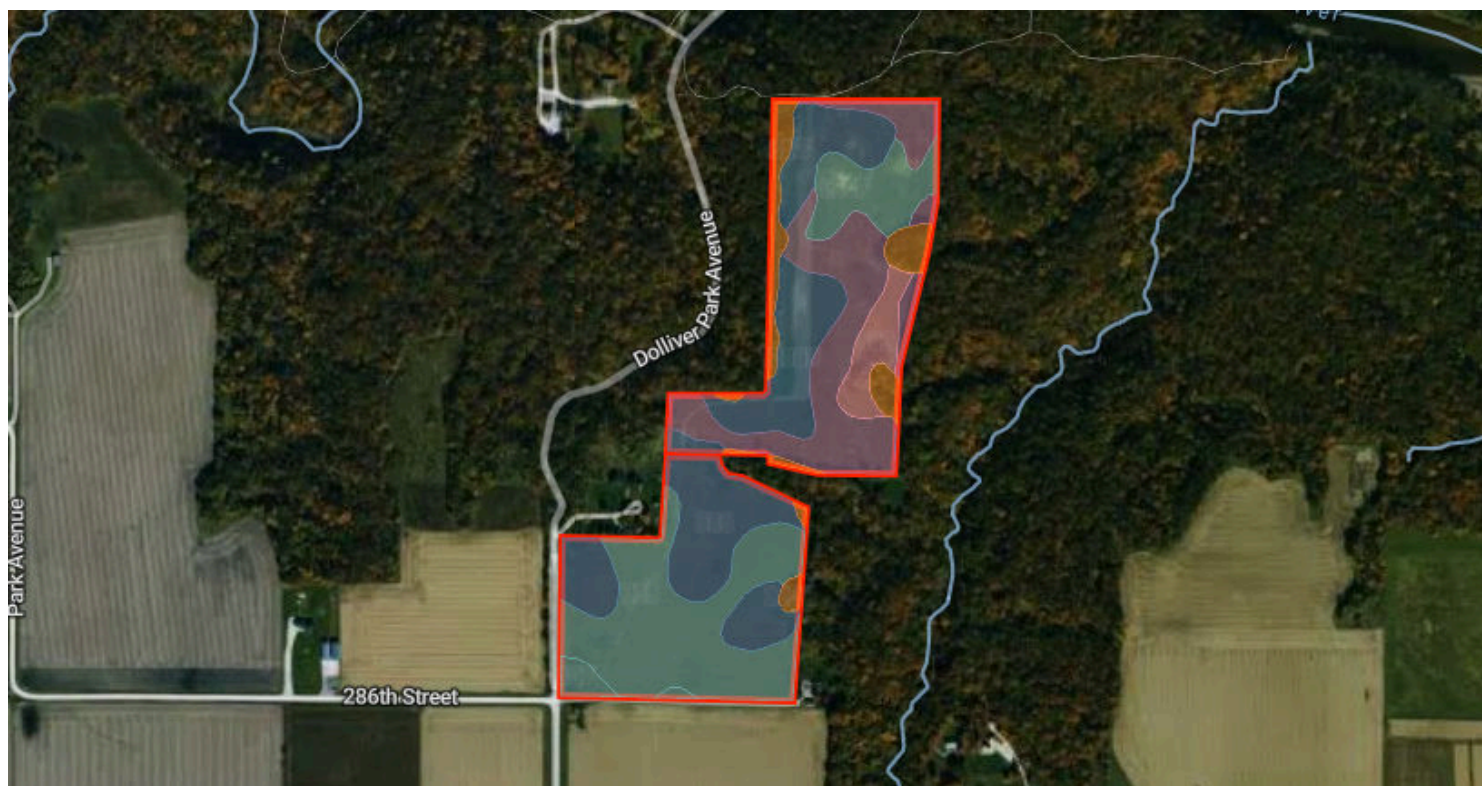
Webster County, IA
Township: 087N

Locations
02 87N 28W

Acres
56.13

Soils by Boundary

56.1 Acres, Boundary 2 of 8



75.1 / 100 CSR2

	Code	Soil Description	% of Selection	Acres	Non-IRR Class	IRR Class	State Score (CSR2)
●	325	Le Sueur loam, 1 to 3 percent slopes	24.3%	13.6	1	--	77
●	355	Luther loam, 1 to 3 percent slopes	21.6%	12.1	1	--	80
●	386	Cordova clay loam, 0 to 2 percent slopes	17.7%	9.9	2w	--	77
●	1236B	Angus loam, 2 to 6 percent slopes	16.2%	9.1	2e	--	85
●	L307	Dundas silt loam, Bemis moraine, 0 to 2 percent slopes	7.4%	4.1	2w	--	81

Soils

56.1 Acres, Boundary 2 of 8

	Code	Soil Description	% of Selection	Acres	Non-IRR Class	IRR Class	State Score (CSR2)
●	262G	Lester-Belview complex, 22 to 40 percent slopes	6.8%	3.8	7e	--	9
●	583	Minnetonka silty clay loam, 0 to 2 percent slopes	4.3%	2.4	2w	--	85
●	107	Webster clay loam, 0 to 2 percent slopes	1.7%	0.9	2w	--	86