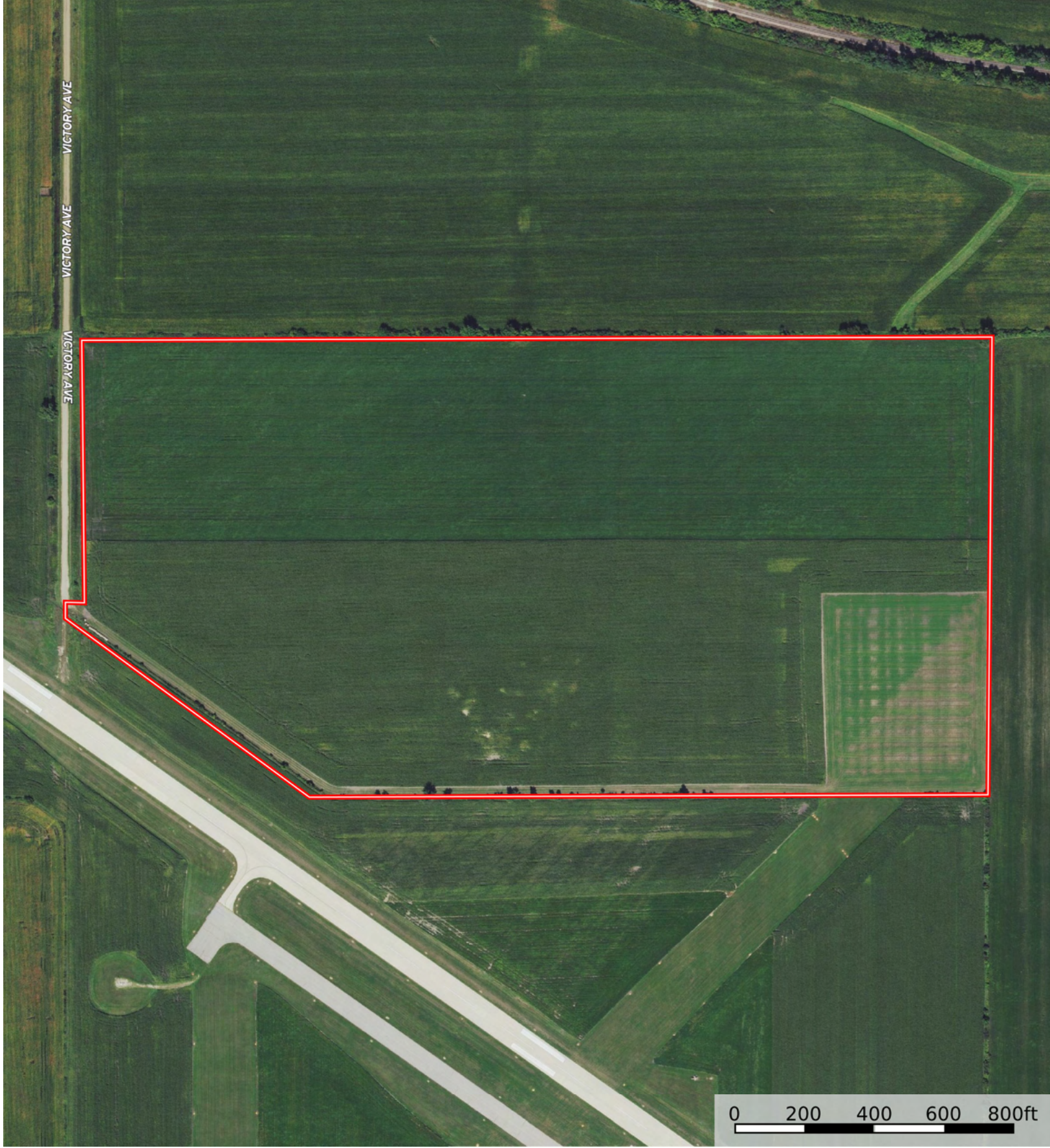


 Boundary



 Boundary



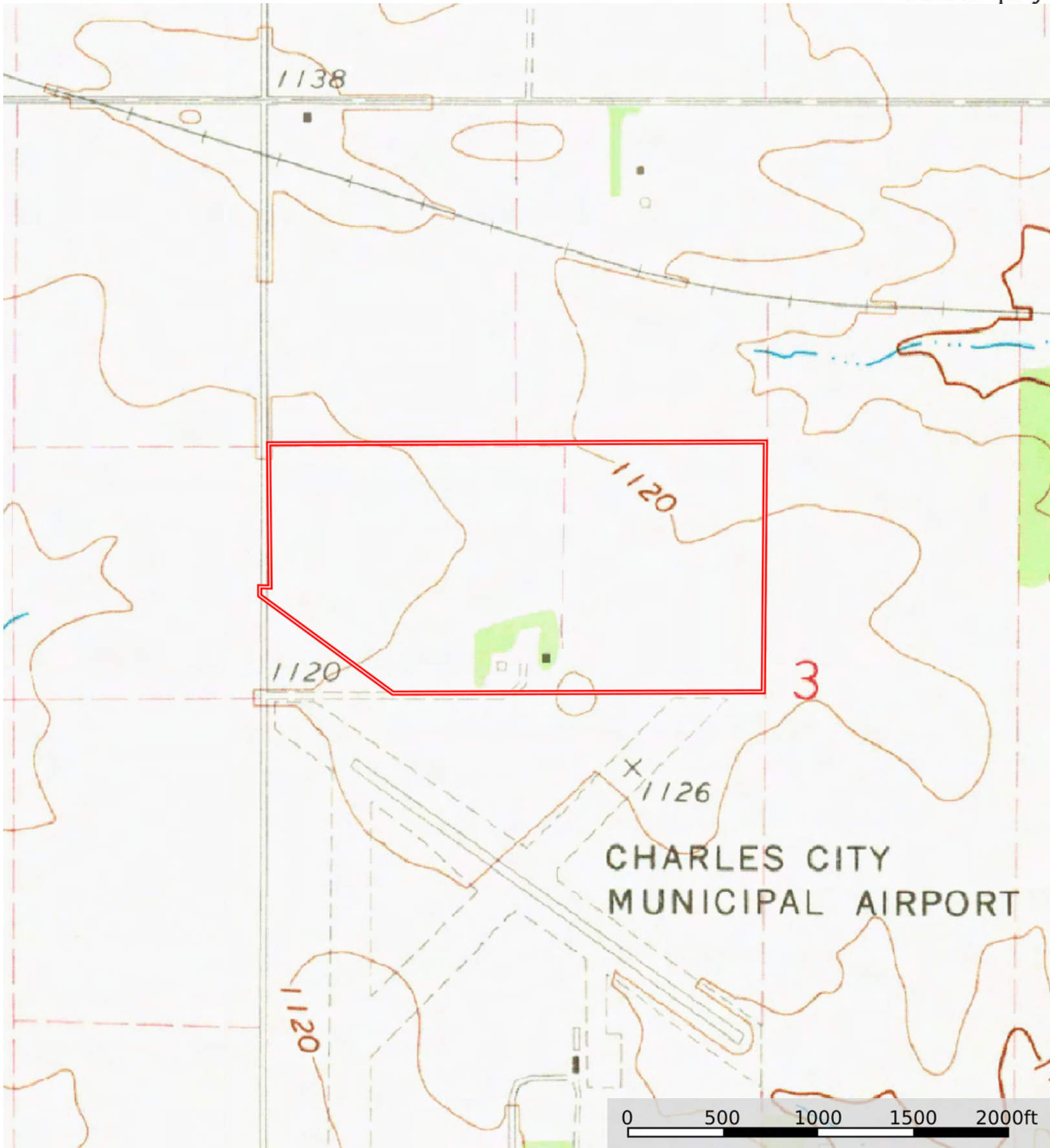
 Boundary

Boundary 75.44 ac

SOIL CODE	SOIL DESCRIPTION	ACRES	%	CSR2	CPI	NCCPI	CAP
398	Tripoli clay loam, 0 to 2 percent slopes	41.45	54.95	82.0	0	67	2w
471	Oran loam, 0 to 2 percent slopes	29.55	39.18	79.0	0	81	1
399	Readlyn silt loam, 1 to 3 percent slopes	4.41	5.85	91.0	0	80	1
83B	Kenyon loam, 2 to 5 percent slopes	0.03	0.04	90.0	0	89	2e
TOTALS		75.44(*)	100%	81.36	-	73.26	1.55

(*) Total acres may differ in the second decimal compared to the sum of each acreage soil. This is due to a round error because we only show the acres of each soil with two decimal.





 Boundary