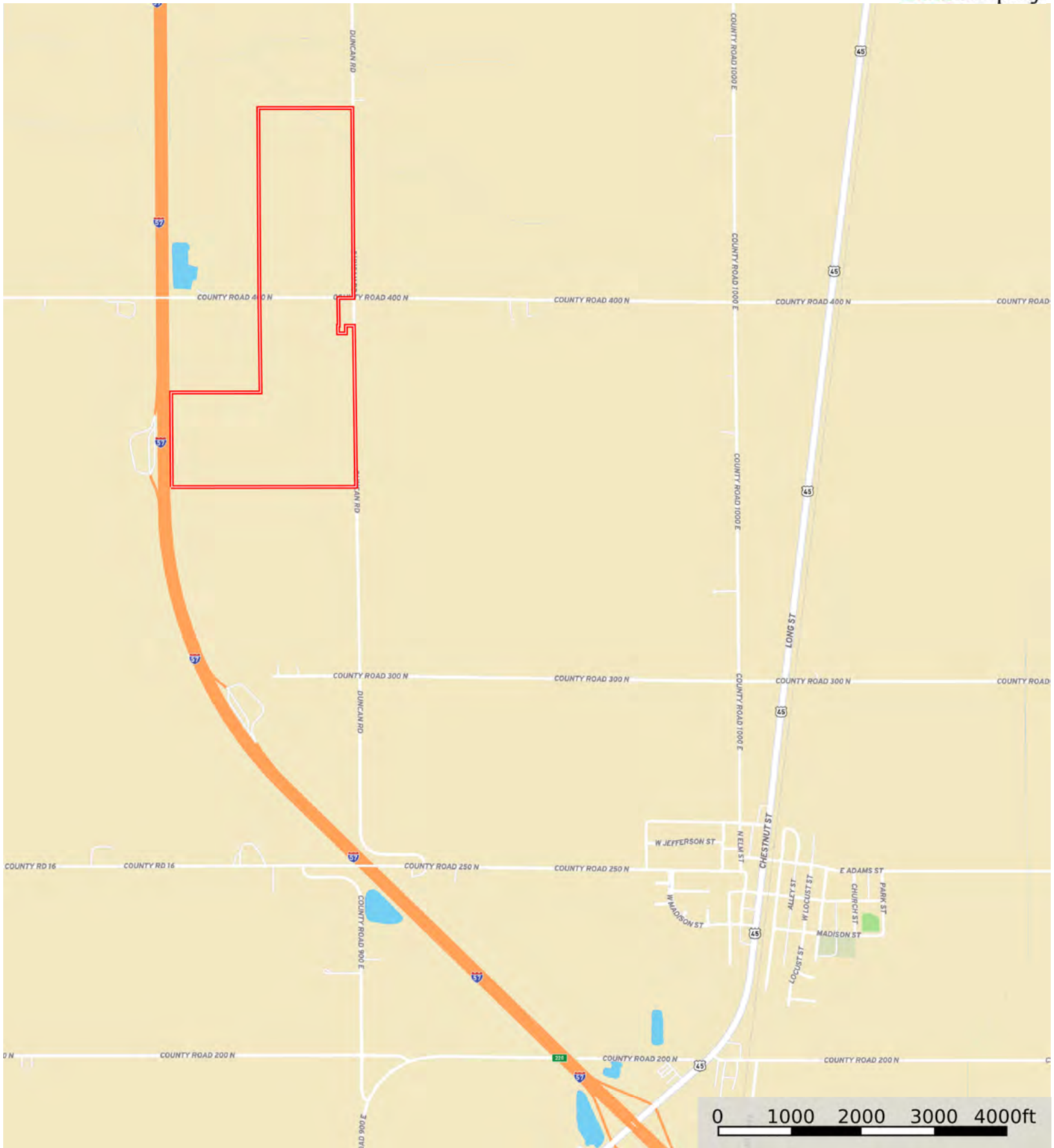


L-2400495

Champaign County, Illinois, 195.76 AC +/-



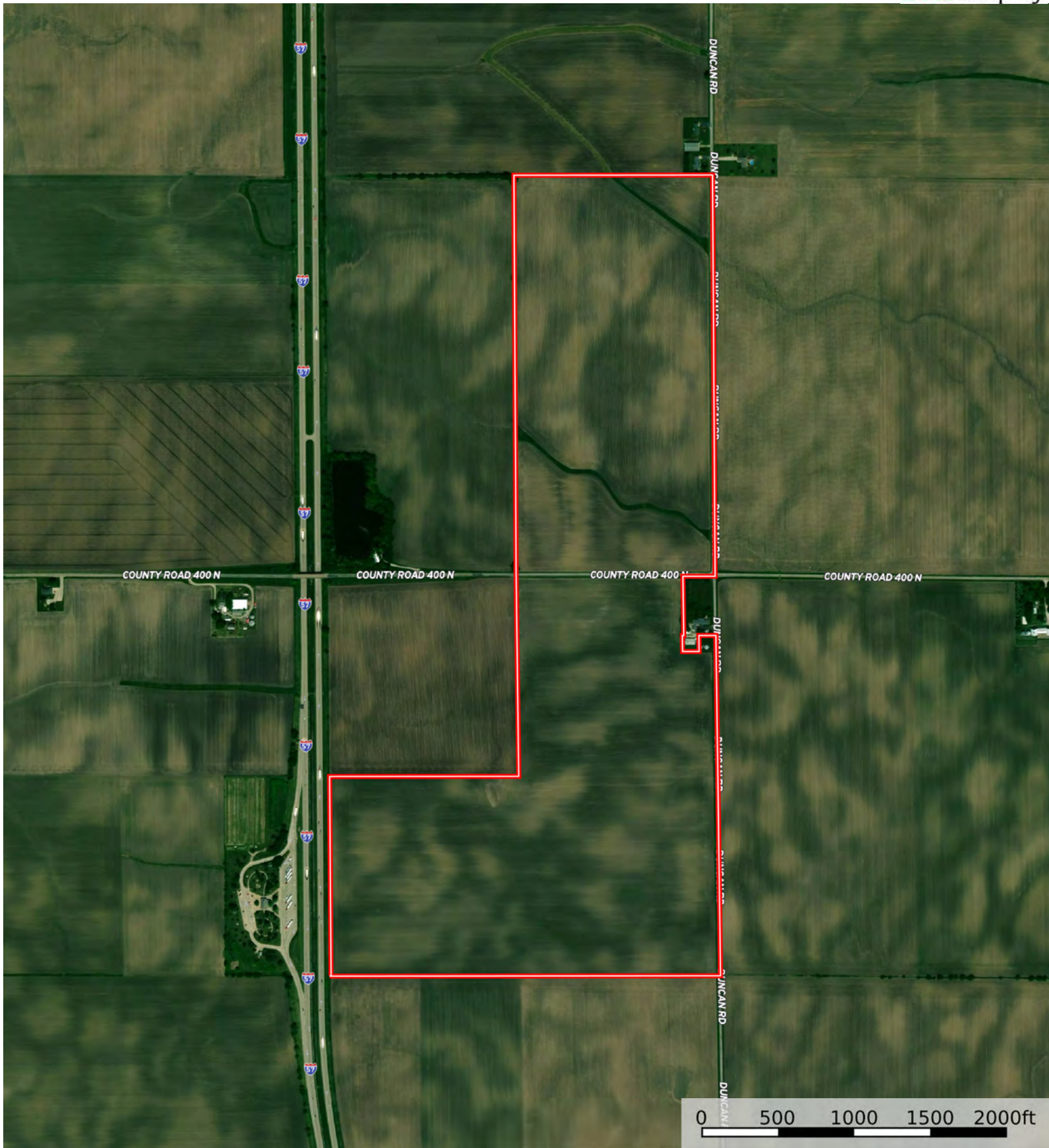
Boundary



The information contained herein was obtained from sources deemed to be reliable. Land id™ Services makes no warranties or guarantees as to the completeness or accuracy thereof.

L-2400495

Champaign County, Illinois, 195.76 AC +/-



Boundary

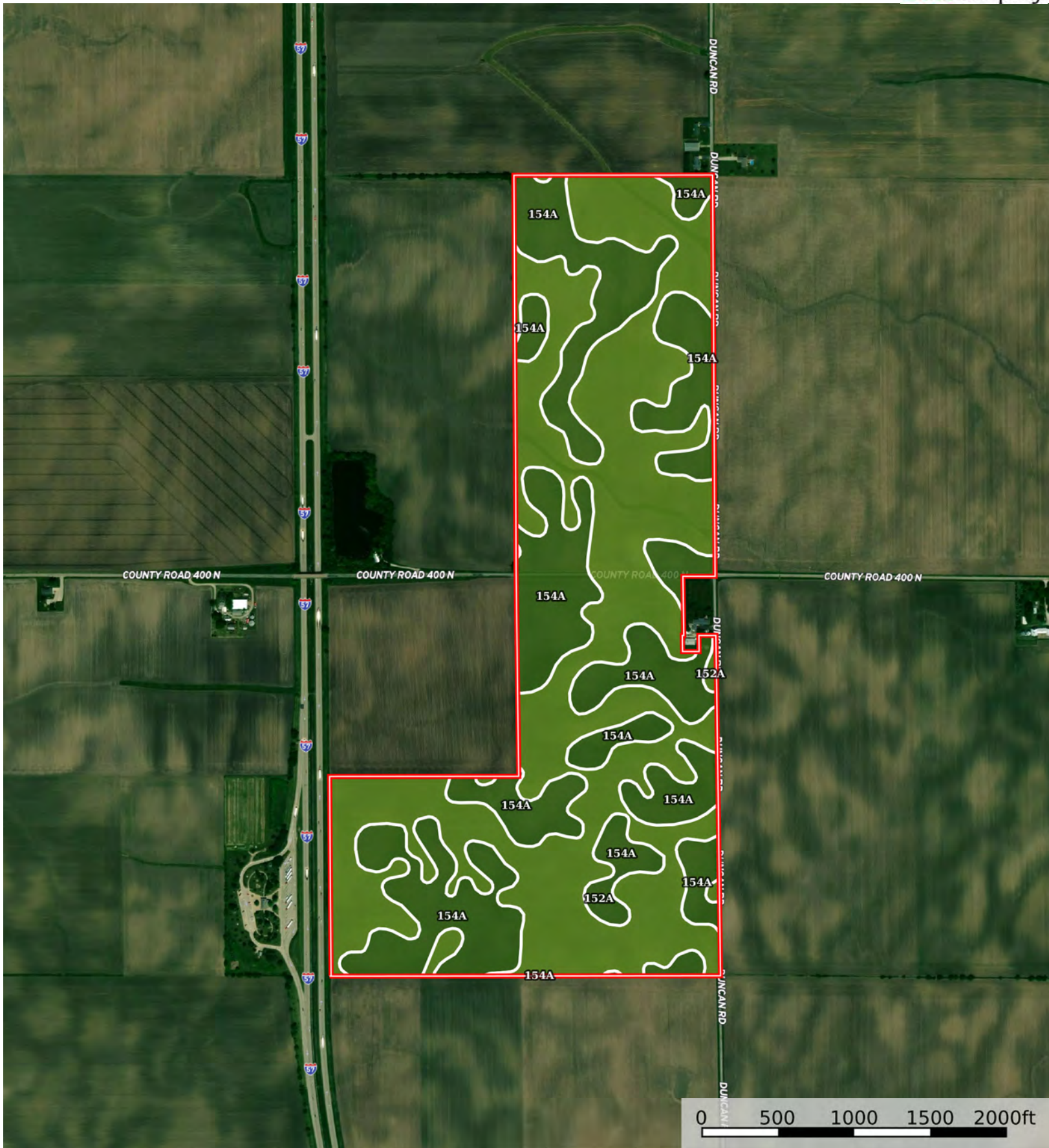


The information contained herein was obtained from sources deemed to be reliable. Land ID™ Services makes no warranties or guarantees as to the completeness or accuracy thereof.



L-2400495

Champaign County, Illinois, 195.76 AC +/-



Boundary



The information contained herein was obtained from sources deemed to be reliable. Land id™ Services makes no warranties or guarantees as to the completeness or accuracy thereof.

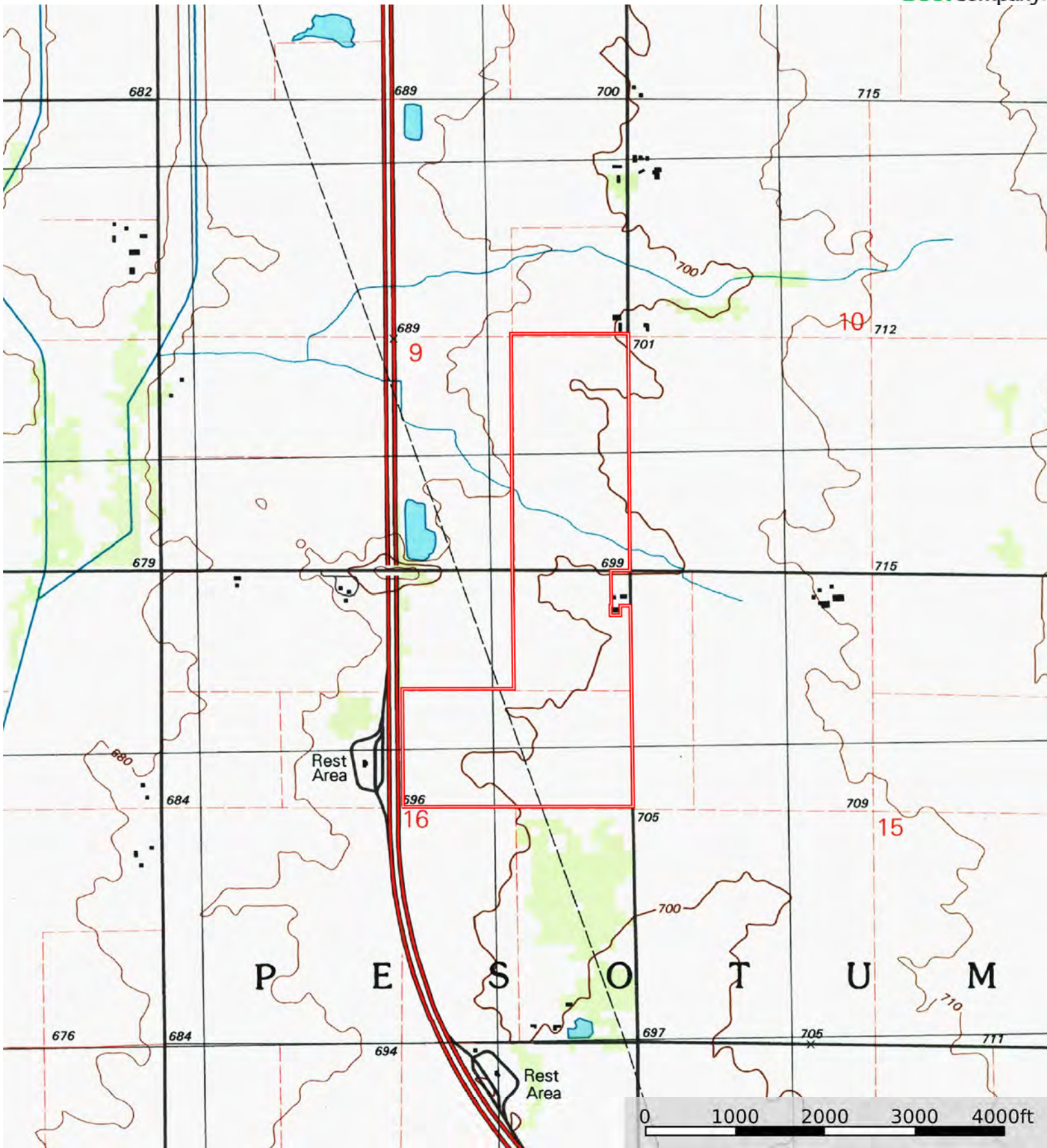
| Boundary 194.32 ac

SOIL CODE	SOIL DESCRIPTION	ACRES	%	PI	NCCPI	CAP
152A	Drummer silty clay loam, 0 to 2 percent slopes	108.38	55.77	144	83	2w
154A	Flanagan silt loam, 0 to 2 percent slopes	85.94	44.22	144	90	1
TOTALS		194.32(*)	100%	143.99	86.09	1.56

(\*) Total acres may differ in the second decimal compared to the sum of each acreage soil. This is due to a round error because we only show the acres of each soil with two decimal.







Boundary

