



---

## TRG Tract Report: MOWINSKI

Scott Hillard; American Forest Management

28 April, 2025

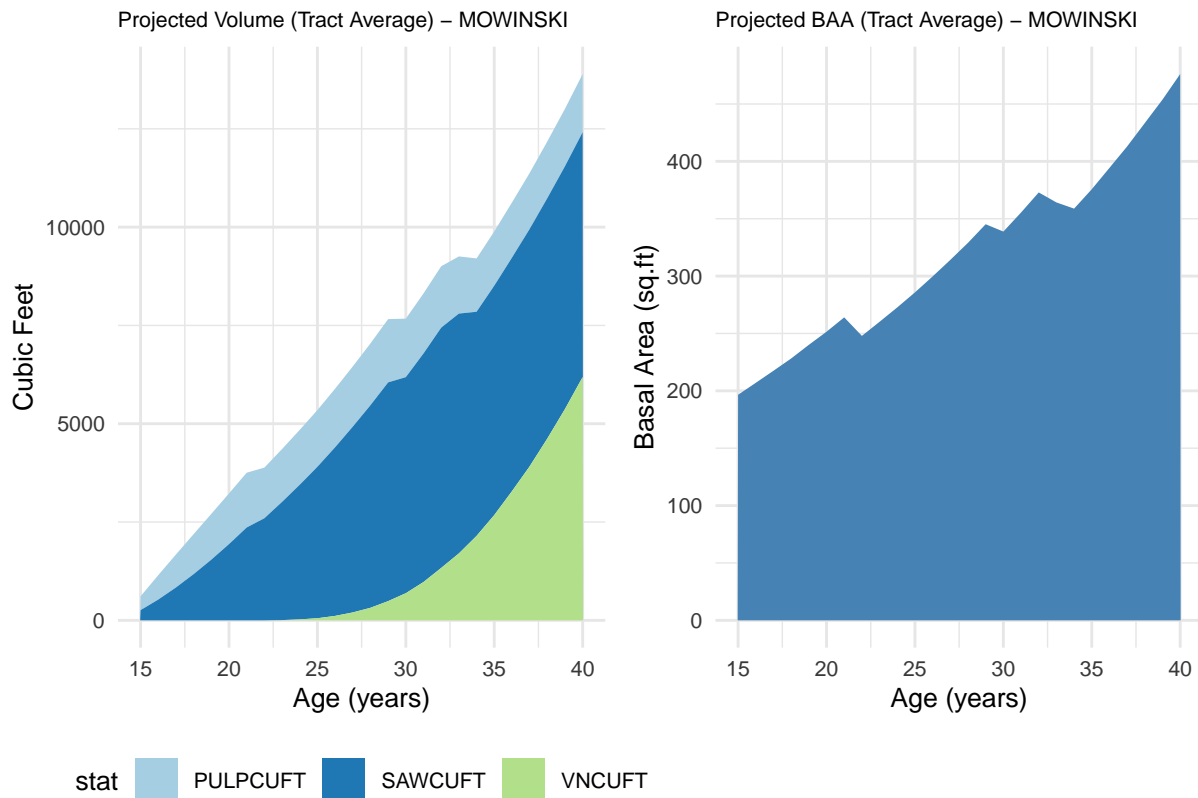
- All volume information (VNCUFT,PULPCUFT,SAWCUFT) represent projections based on inventory. These are for informational purposes. Actual volumes may vary from projections, likewise AFM cannot guarantee projections. Projections include silvicultural treatments, such as thinning. There are four stands Tank-9, Goode-4, Hansen-3, and Preuss-6 which were experimental plantings of white oak, or oak and walnut mixed. These were excluded from the analysis within those tracts. Overall they represent a total of approximately 42 acres.

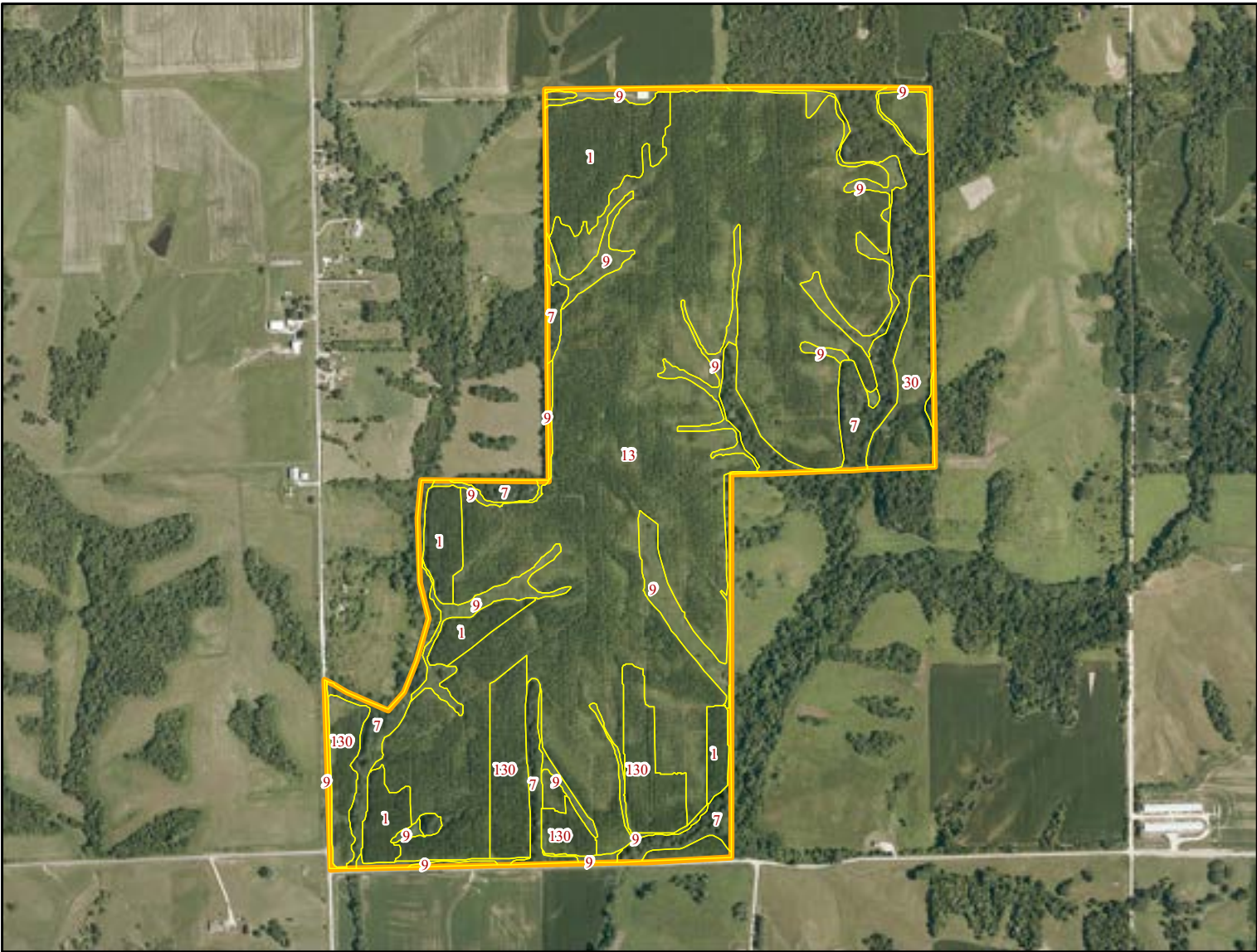
Table 1: Est. Current Stand Inventory for (Productive Area-Walnut Stands Only); MOWINSKI

Stand	GIS.Area	Current_Age	DBH	BAPA	TPA	TH	SAWCUFT	PULPCUFT
1	25.55	13	6.0	59.3	296	49.3	210.3	269.7
13	190.67	13	4.3	28.3	255	31.2	11.2	19.4
130	21.72	13	5.1	38.7	269	39.5	27.7	44.4
30	7.98	13	4.2	27.6	255	30.6	10.5	18.3

Table 2: Weighted Tract Average (Productive Area-Walnut Stands Only)

GIS_Area_Productive	GIS_Area_Total	Avg_DBH	Avg_BA	Avg_TPA	Avg_HT	Avg_SAWCUFT	Avg_PULPCUFT
245.9	306.6	4.5	32.4	260.5	33.8	33.3	47.5





Tract Name	Stand	State	County	Acres	Origin	Dom Species	Year Est
MOWINSKI	TRGBW015-212-1	Illinois	Mercer	25.55	Planted	Walnut	2011
MOWINSKI	TRGBW015-212-7	Illinois	Mercer	34.50	Natural	Hardwood	0
MOWINSKI	TRGBW015-212-9	Illinois	Mercer	26.14	Open	Undefined	0
MOWINSKI	TRGBW015-212-13	Illinois	Mercer	190.67	Planted	Walnut	2011
MOWINSKI	TRGBW015-212-130	Illinois	Mercer	21.72	Planted	Walnut	2011
MOWINSKI	TRGBW015-212-30	Illinois	Mercer	7.98	Planted	Hardwood	2011
				306.56			

MOWINSKI



1 inch = 1,090 feet

1/27/2025 mgm

