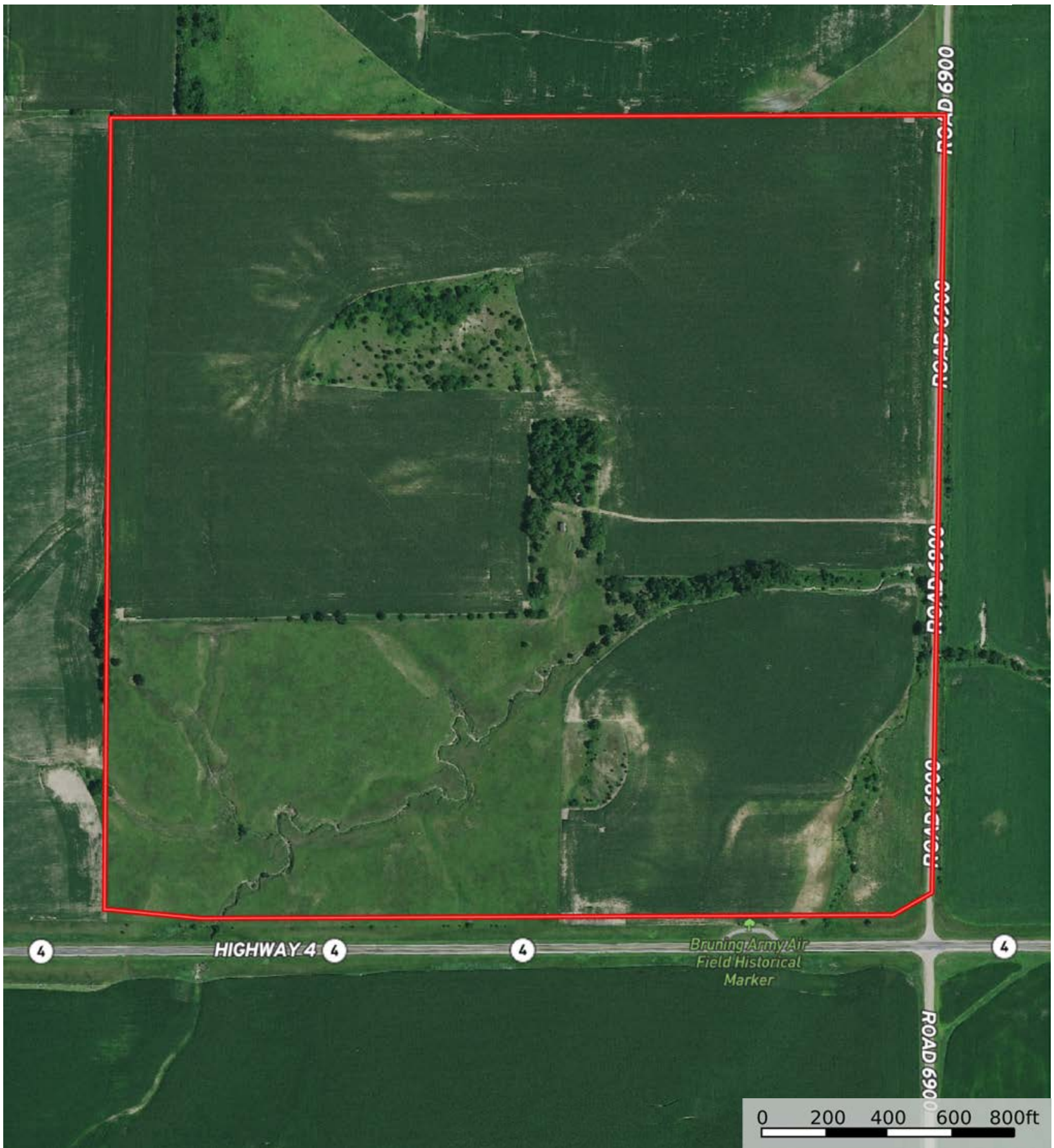





 Boundary


A-30585-3

Thayer County, Nebraska, 154.24 AC +/-



 Boundary



 Boundary


Boundary 154.07 ac

SOIL CODE	SOIL DESCRIPTION	ACRES	%	CPI	NCCPI	CAP
3840	Geary silty clay loam, 7 to 11 percent slopes, eroded	25.73	16.7	0	63	4e
3776	Muir silt loam, 1 to 3 percent slopes	25.12	16.3	0	81	2e
3955	Geary silty clay loam, 7 to 11 percent slopes, severely eroded	23.75	15.41	0	56	4e
3839	Geary silty clay loam, 11 to 30 percent slopes	18.0	11.68	0	52	6e
3775	Muir silt loam, rarely flooded	15.8	10.25	0	87	1
3521	Cass fine sandy loam, occasionally flooded	12.49	8.11	0	48	2w
3825	Crete silt loam, 1 to 3 percent slopes	11.04	7.16	0	63	2e
3969	Hastings soils, eroded	9.34	6.06	0	56	4e
3824	Crete silt loam, 0 to 1 percent slopes	7.57	4.91	0	64	2s
3870	Hastings silty clay loam, 3 to 7 percent slopes, eroded	5.23	3.39	0	59	3e
TOTALS		154.09(*)	100%	-	64.3	3.16

(*) Total acres may differ in the second decimal compared to the sum of each acreage soil. This is due to a round error because we only show the acres of each soil with two decimal.





 Boundary

Boundary 117.97 ac

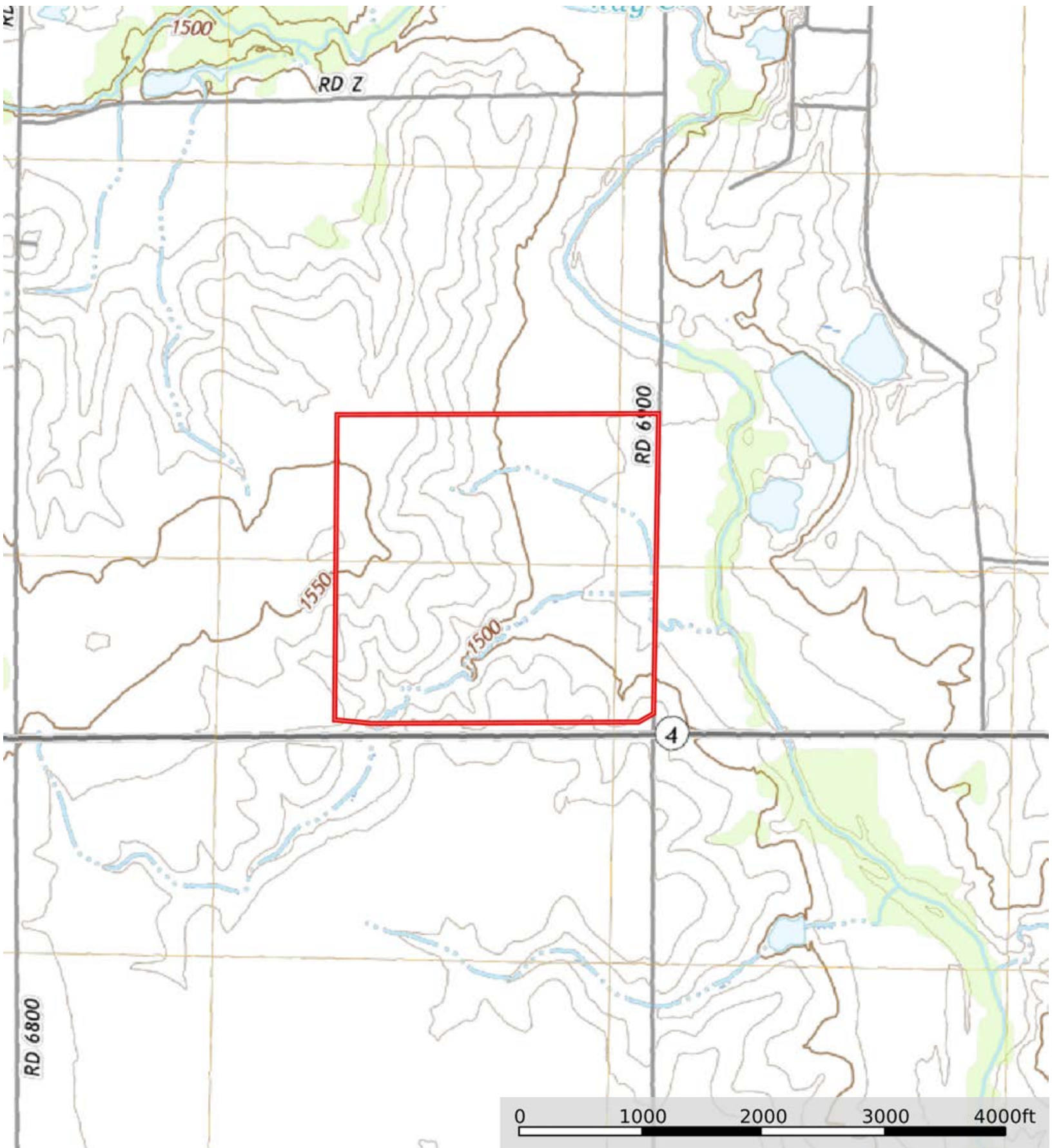
SOIL CODE	SOIL DESCRIPTION	ACRES	%	CPI	NCCPI	CAP
3776	Muir silt loam, 1 to 3 percent slopes	24.27	20.57	0	81	2e
3955	Geary silty clay loam, 7 to 11 percent slopes, severely eroded	23.92	20.28	0	56	4e
3775	Muir silt loam, rarely flooded	15.68	13.29	0	87	1
3840	Geary silty clay loam, 7 to 11 percent slopes, eroded	11.78	9.99	0	63	4e
3521	Cass fine sandy loam, occasionally flooded	11.42	9.68	0	48	2w
3825	Crete silt loam, 1 to 3 percent slopes	11.22	9.51	0	63	2e
3824	Crete silt loam, 0 to 1 percent slopes	7.95	6.74	0	64	2s
3969	Hastings soils, eroded	7.52	6.37	0	56	4e
3870	Hastings silty clay loam, 3 to 7 percent slopes, eroded	3.95	3.35	0	59	3e
3839	Geary silty clay loam, 11 to 30 percent slopes	0.26	0.22	0	52	6e
TOTALS		117.97(*)	100%	-	66.48	2.64


(*) Total acres may differ in the second decimal compared to the sum of each acreage soil. This is due to a round error because we only show the acres of each soil with two decimal.



A-30585-3

Thayer County, Nebraska, 154.24 AC +/-



 Boundary