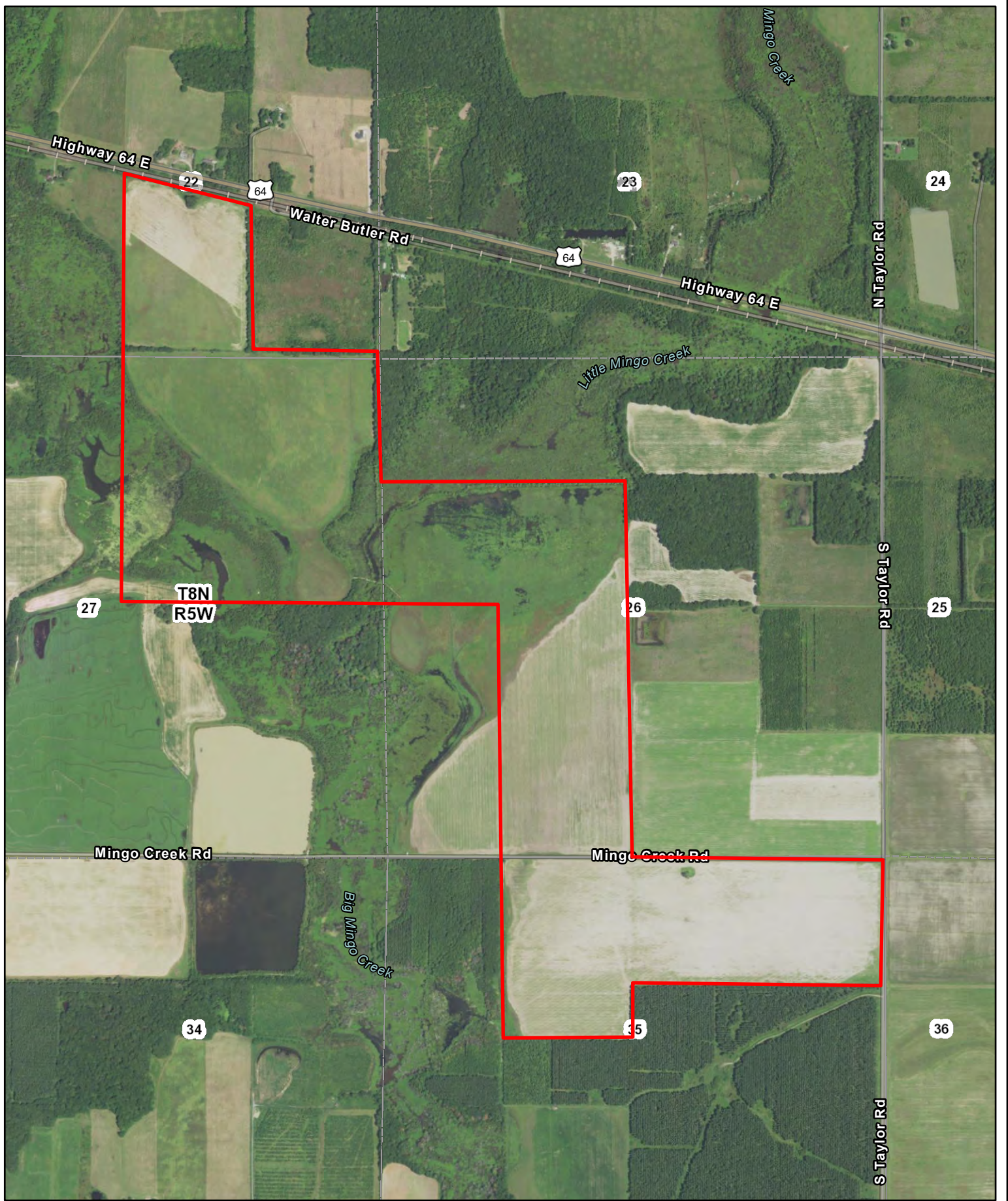


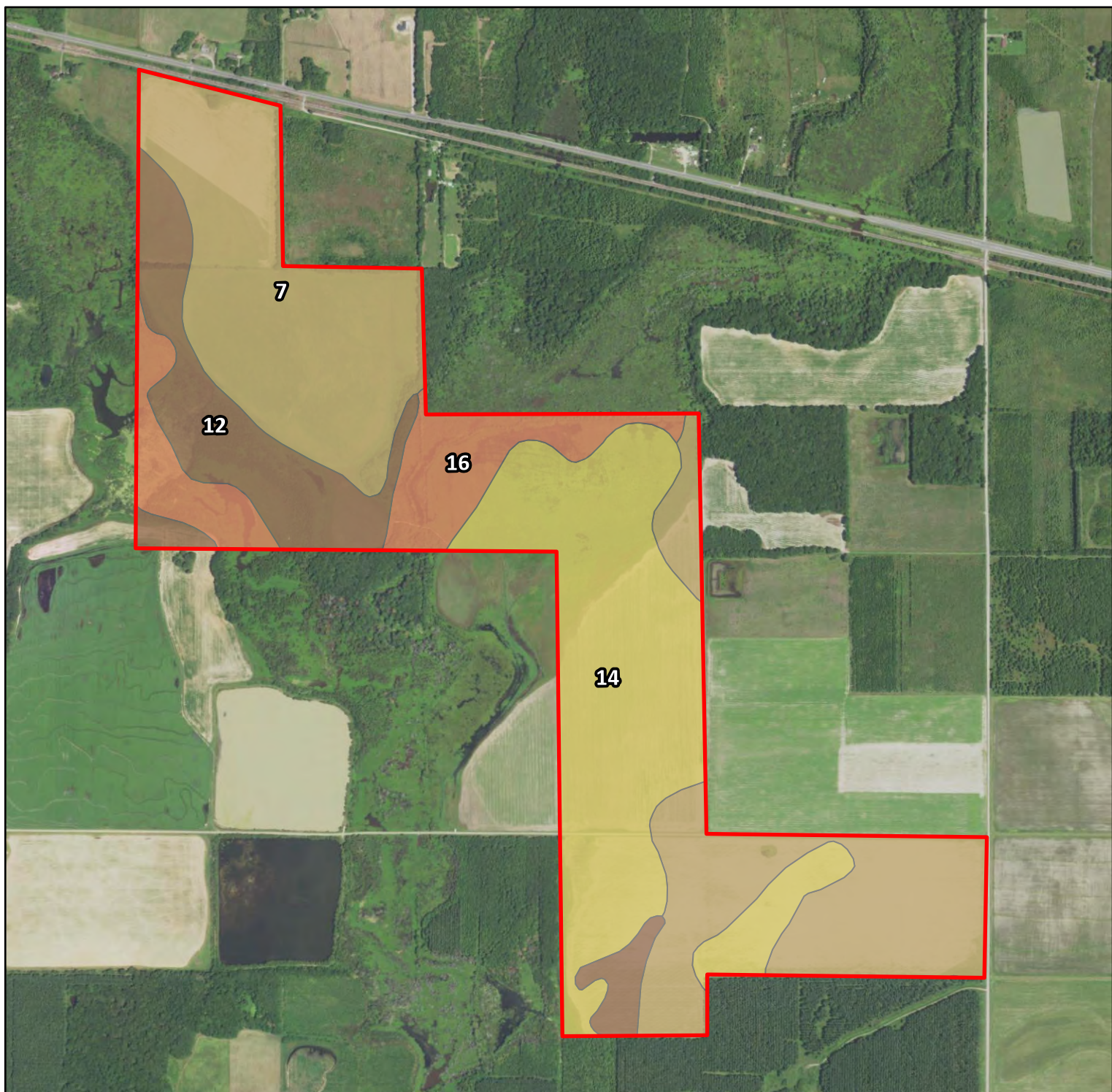
Farm #14036
Taylor Family Ltd Ptr
White County, Arkansas

Latitude: 35.3031°N
Longitude: 91.5415°W
Imagery Source: USDA NAIP
Soil Data Source: USDA NRCS
Boundaries are Approximate



Farm #14036
Taylor Family Ltd Ptr
White County, Arkansas

Latitude: 35.2882°N
Longitude: 91.5134°W
Imagery Source: USDA NAIP
Soil Data Source: USDA NRCS
Boundaries are Approximate

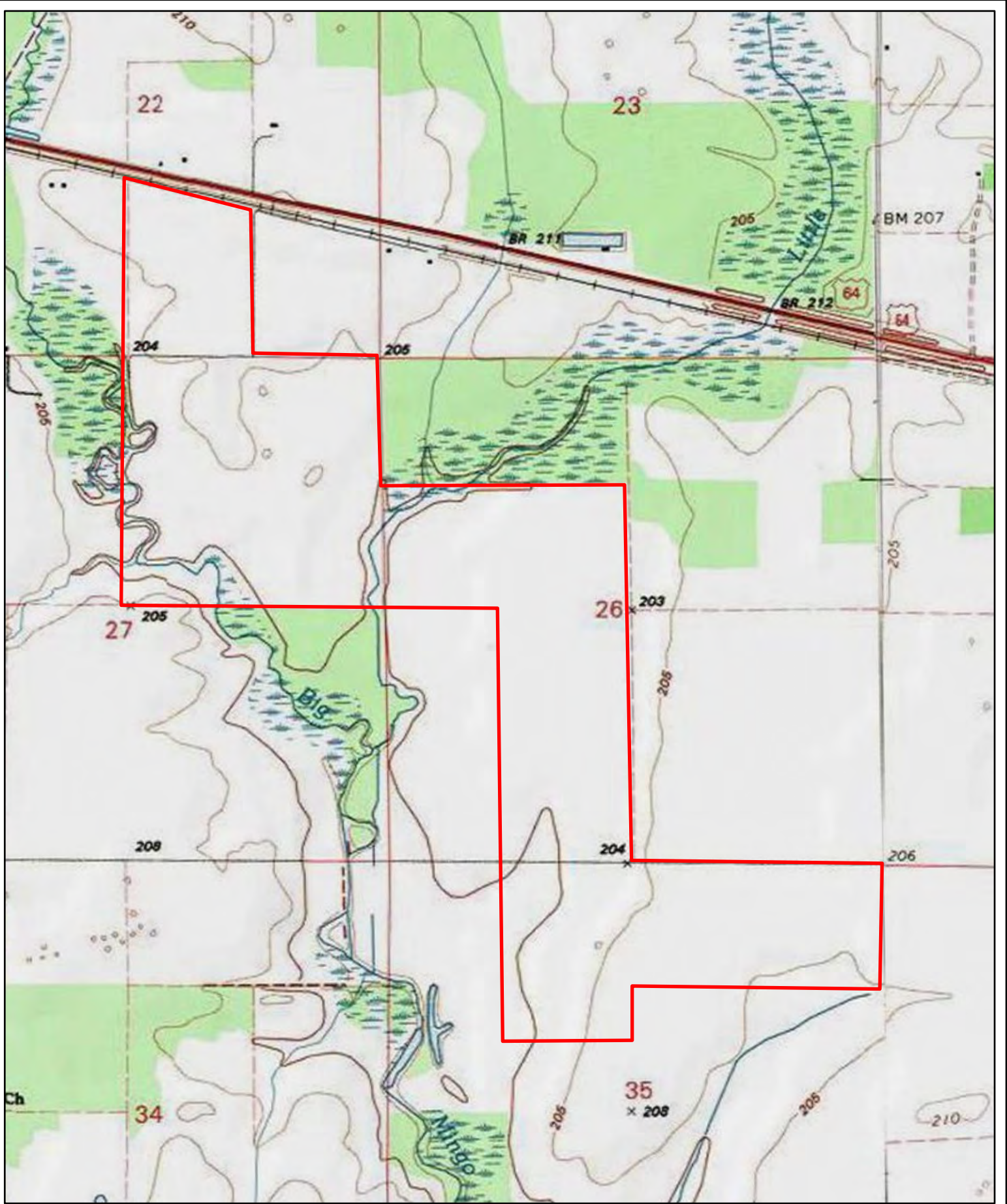


Map Symbol	Name	NON IRR LCC Acres
7	Dewitt silt loam, 0 to 1 percent slopes	IIIw 223.4
14	Jackport silty clay loam, 0 to 1 percent slopes	IIIw 162.3
12	Gore silt loam, 1 to 3 percent slopes	IVe 72.9
16	Kobel silty clay, frequently flooded	IVw 56.7
TOTAL		515.4



Farm #14036
 Taylor Family Ltd Ptr
 White County, Arkansas

Latitude: 35.2882°N
 Longitude: 91.5134°W
 Imagery Source: USDA NAIP
 Soil Data Source: USDA NRCS
 Boundaries are Approximate



Farm #14036
Taylor Family Ltd Ptr
White County, Arkansas

Latitude: 35.2882°N
Longitude: 91.5134°W
Imagery Source: USDA NAIP
Soil Data Source: USDA NRCS
Boundaries are Approximate