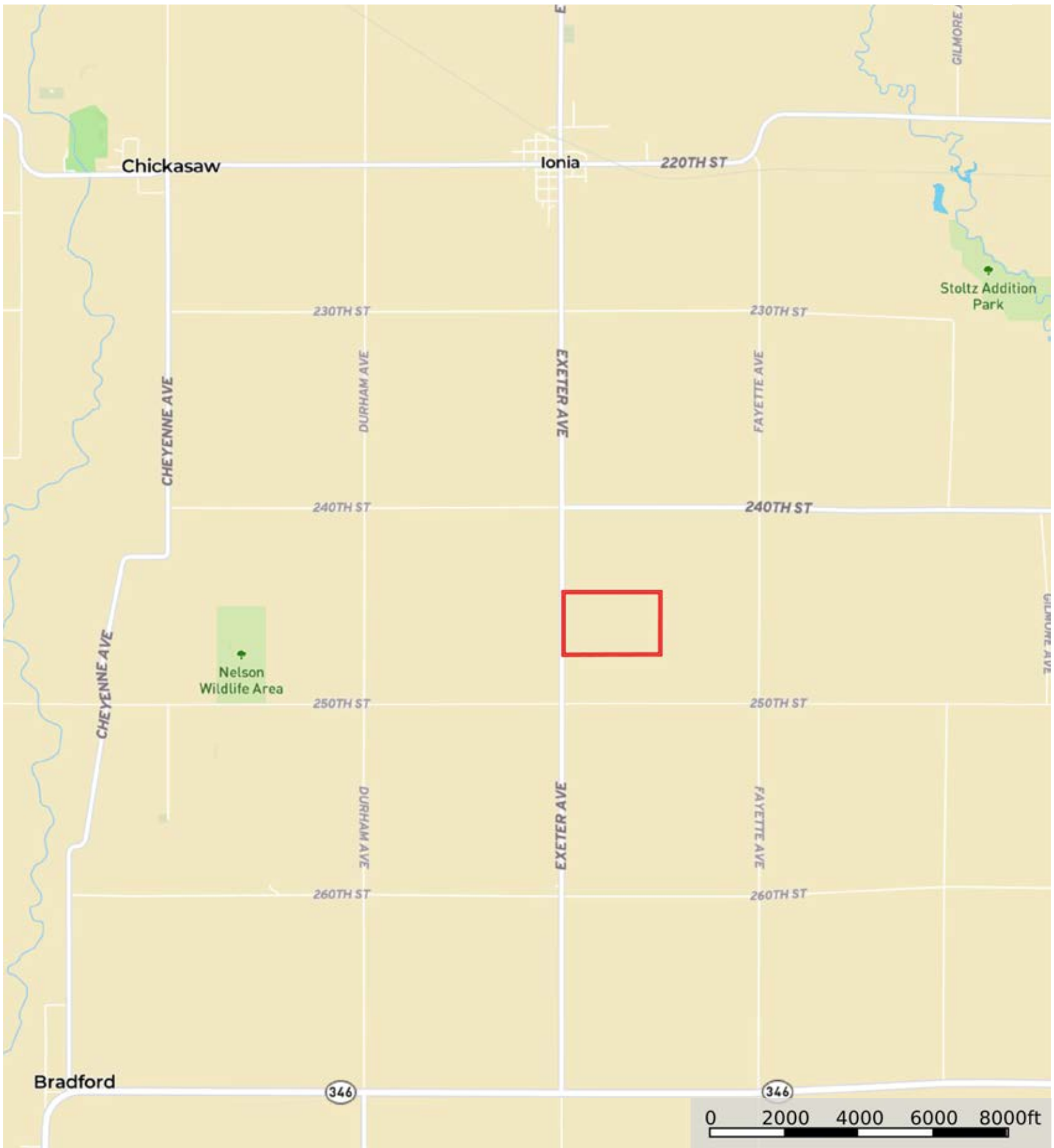



L23000145

Chickasaw County, Iowa, 101.4 AC +/-



 Boundary



The information contained herein was obtained from sources deemed to be reliable. MapRight Services makes no warranties or guarantees as to the completeness or accuracy thereof.


L23000145

Chickasaw County, Iowa, 101.4 AC +/-



 Boundary



 Boundary

Boundary 100.77 ac

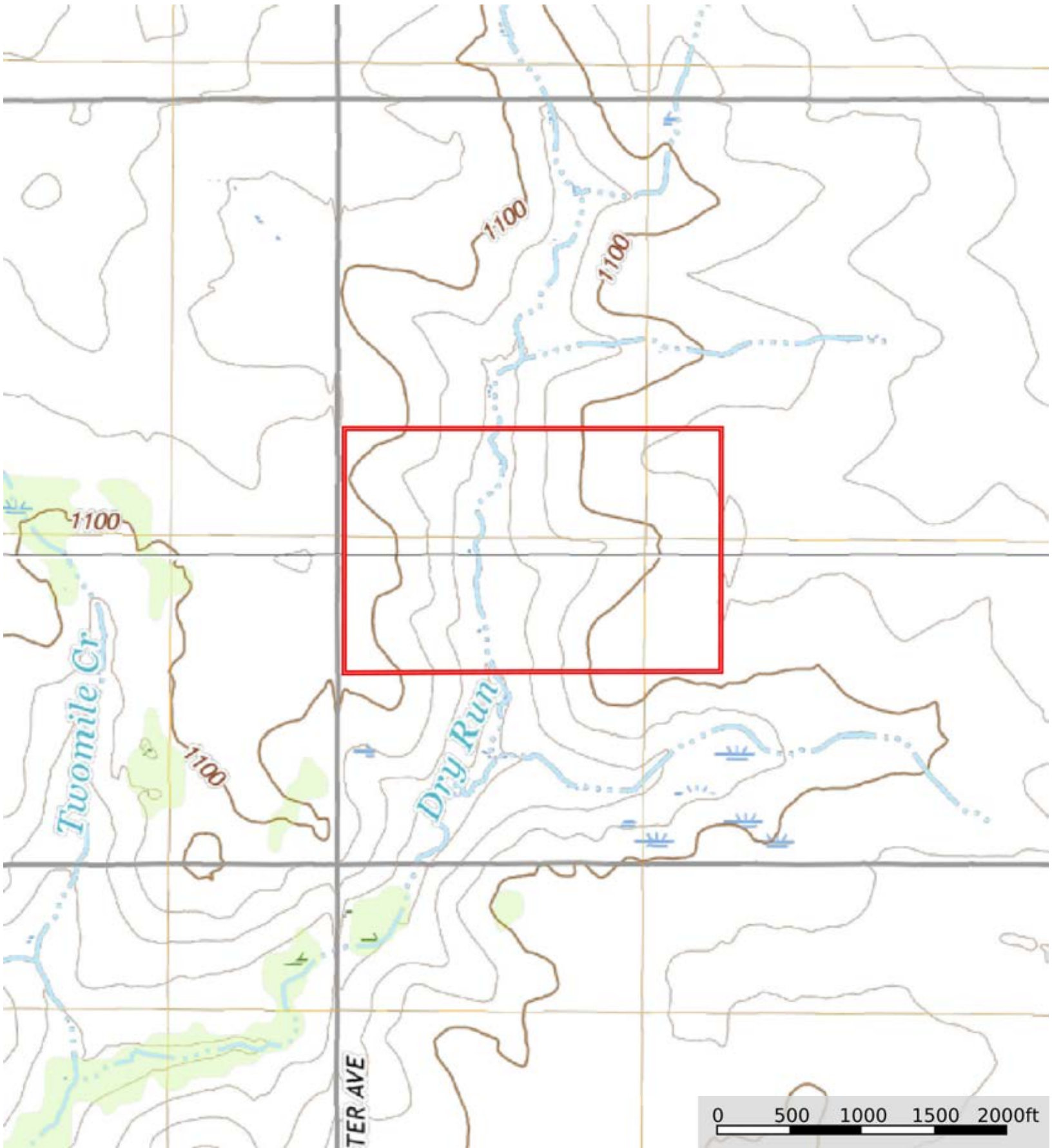
SOIL CODE	SOIL DESCRIPTION	ACRES	%	CSR2	CPI	NCCPI	CAP
83B	Kenyon loam, 2 to 5 percent slopes	39.73	39.43	90.0	97	91	2e
84	Clyde clay loam, 0 to 3 percent slopes	25.45	25.26	88.0	0	91	2w
198B	Floyd loam, 1 to 4 percent slopes	23.82	23.64	89.0	0	85	2w
399	Readlyn silt loam, 1 to 3 percent slopes	5.49	5.45	91.0	100	81	1
398	Tripoli clay loam, 0 to 2 percent slopes	3.55	3.52	82.0	87	67	2w
83C	Kenyon loam, 5 to 9 percent slopes	2.29	2.27	85.0	0	90	3e
323B	Terril loam, sandy substratum, 2 to 5 percent slopes	0.44	0.44	80.0	0	89	2e
TOTALS		100.77(*)	100%	88.88	46.76	88.17	1.97

(*) Total acres may differ in the second decimal compared to the sum of each acreage soil. This is due to a round error because we only show the acres of each soil with two decimal.



L23000145

Chickasaw County, Iowa, 101.4 AC +/-



 Boundary