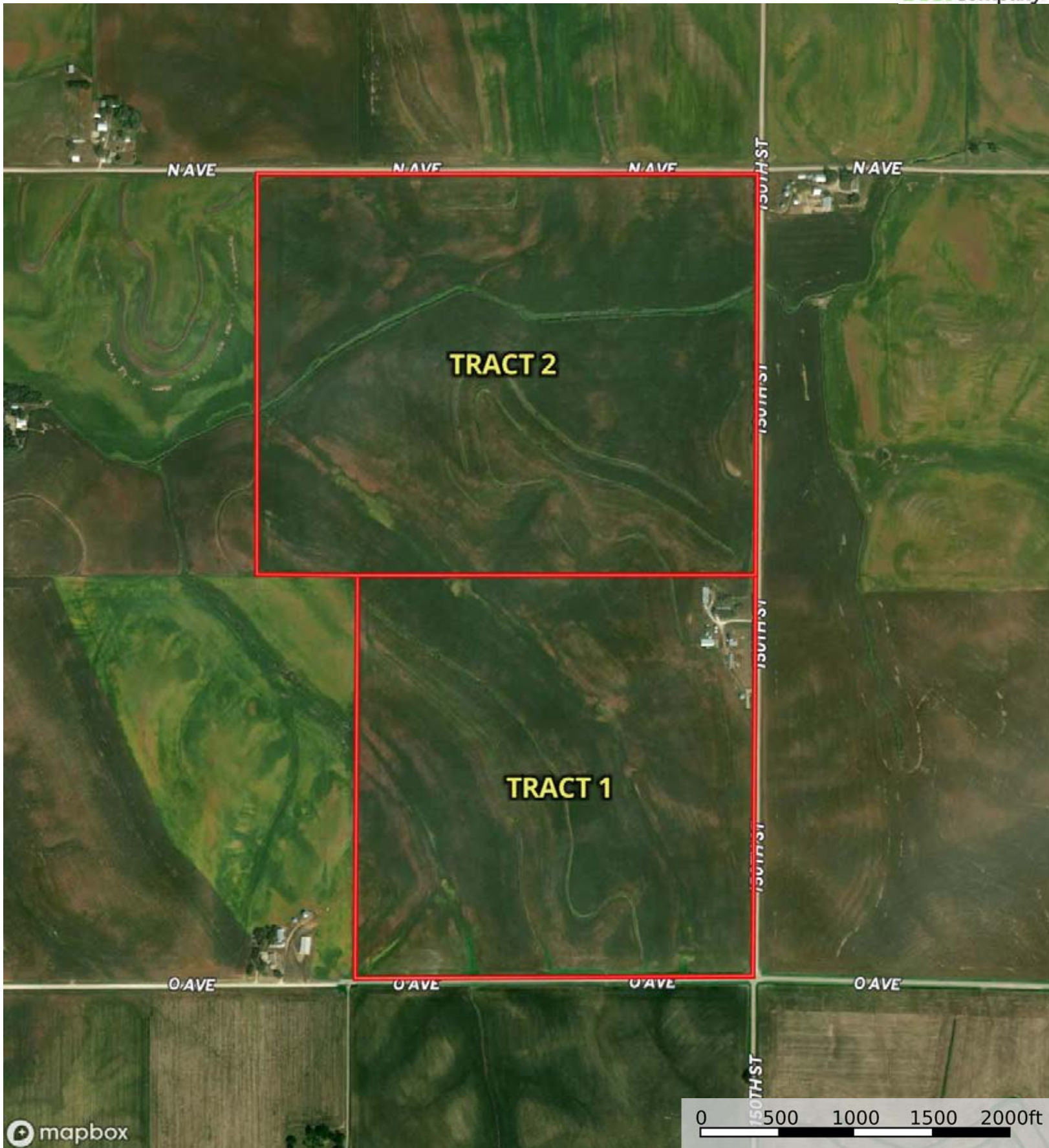
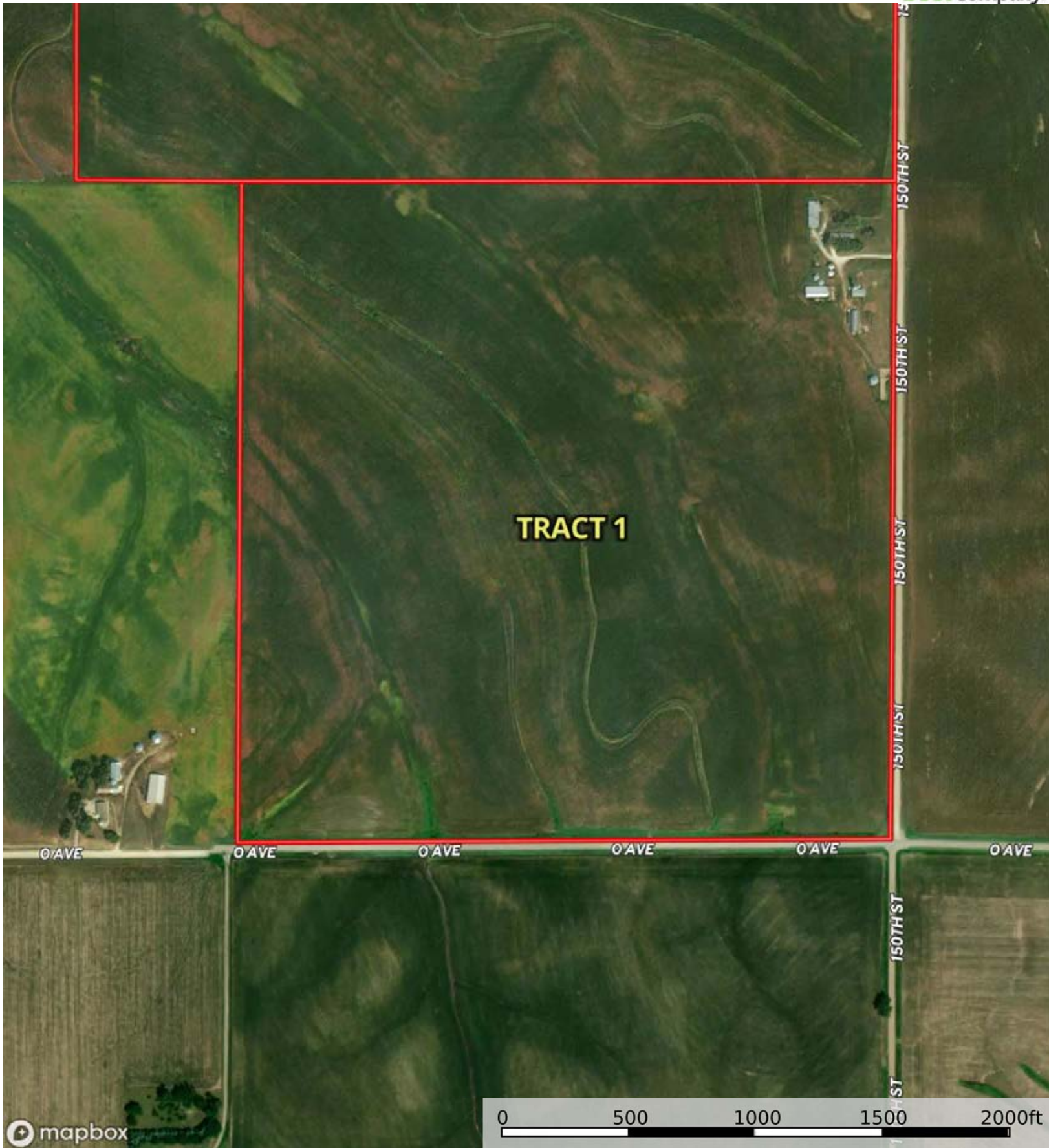
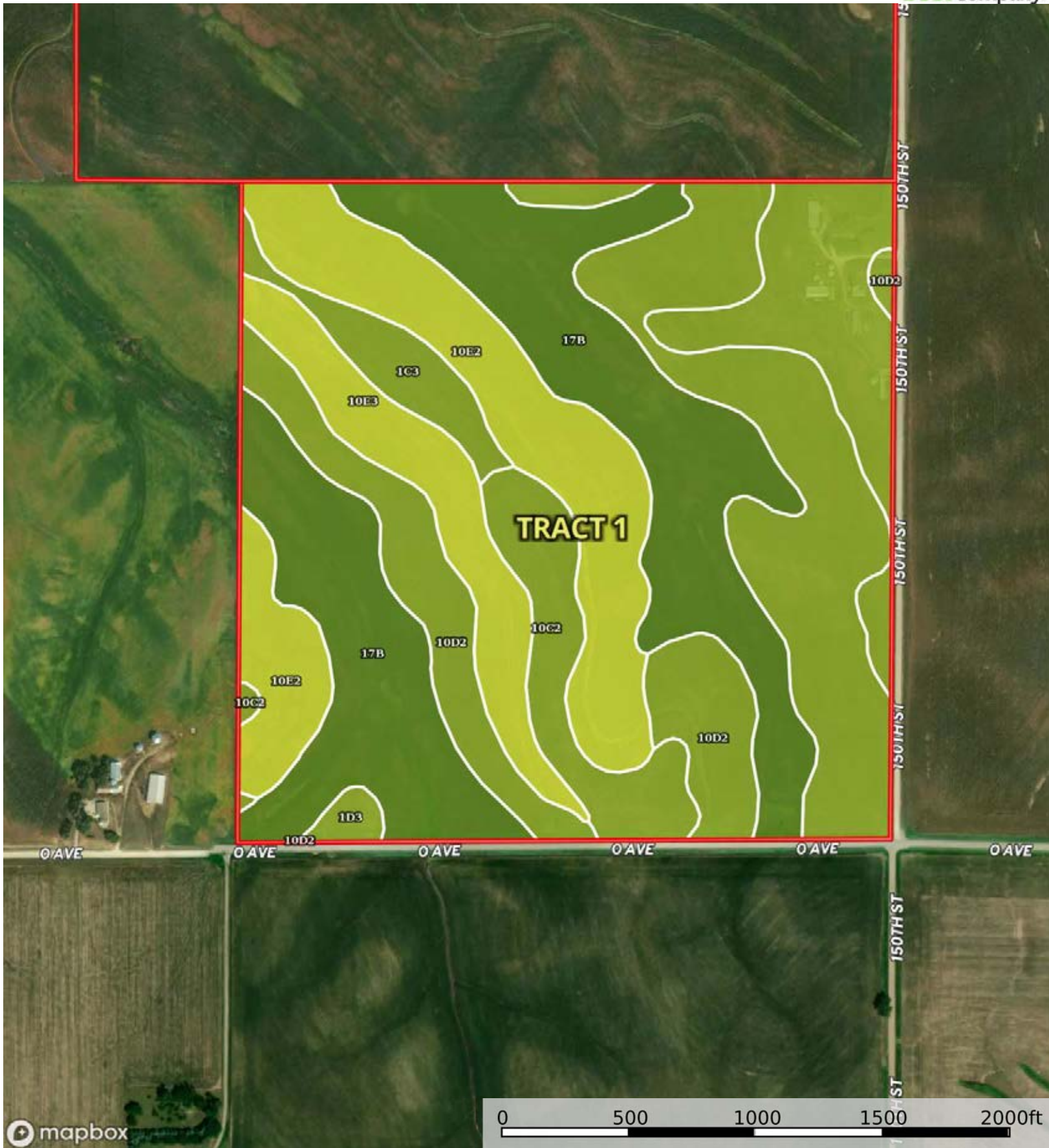
 Boundary





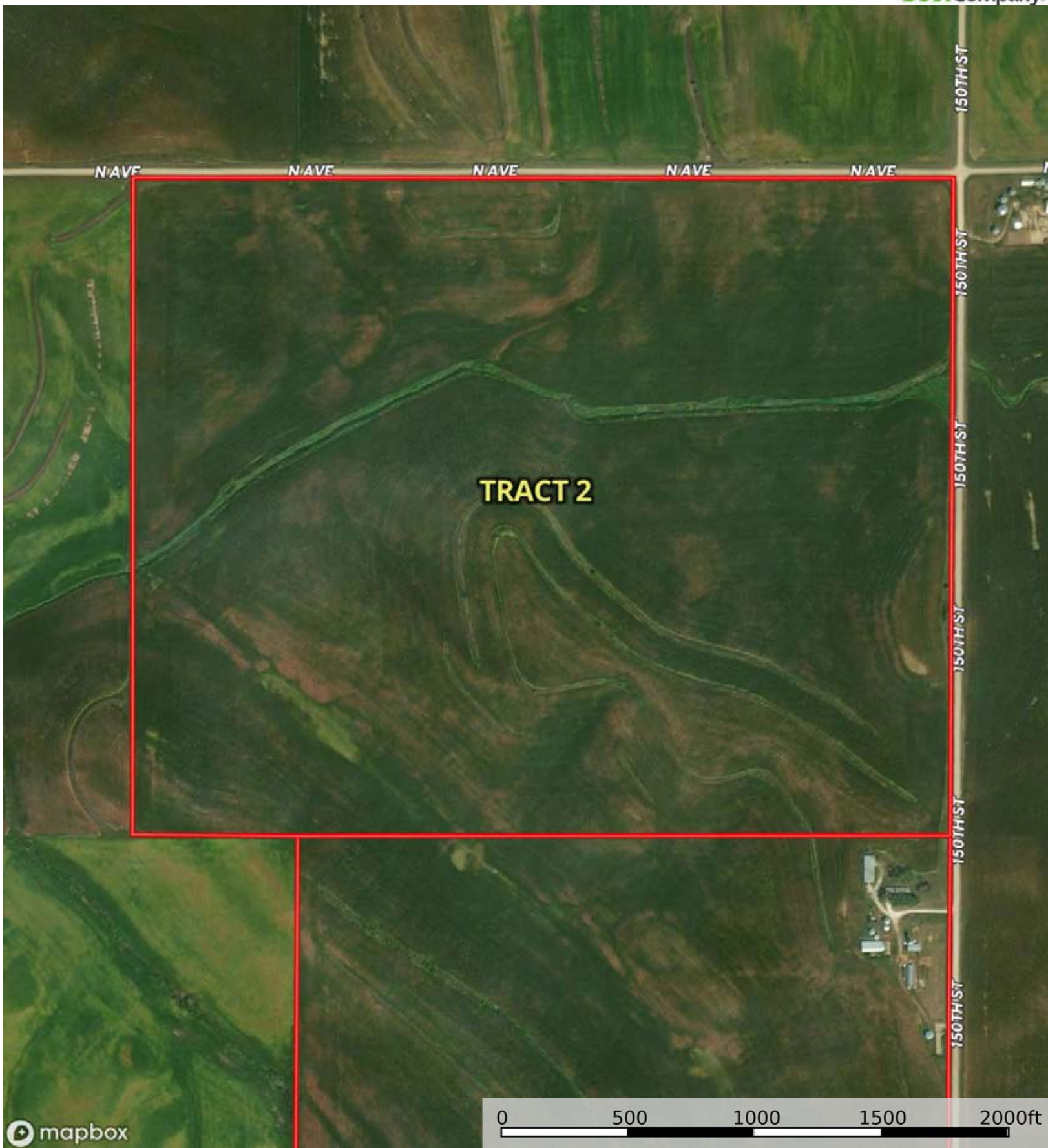



Boundary 154.16 ac

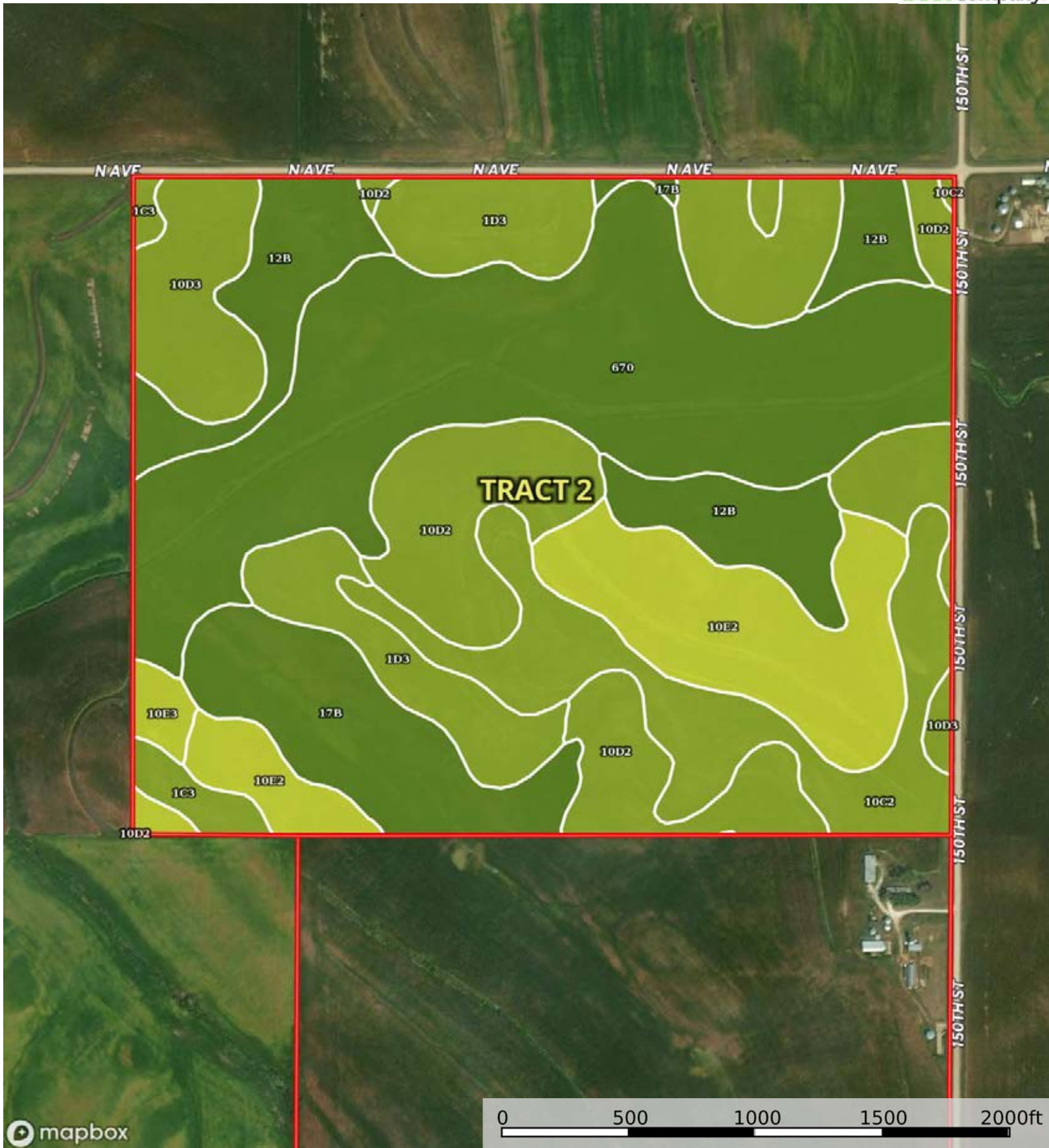
SOIL CODE	SOIL DESCRIPTION	ACRES	%	CSR2	CPI	NCCPI	CAP
17B	Napier-Kennebec-Colo complex, 0 to 5 percent slopes	45.96	29.81	80.0	0	74	2e
10D2	Monona silt loam, 9 to 14 percent slopes, eroded	42.32	27.45	60.0	0	80	3e
10E2	Monona silt loam, 14 to 20 percent slopes, eroded	25.98	16.85	45.0	0	75	4e
10C2	Monona silt loam, 5 to 9 percent slopes, eroded	22.51	14.6	86.0	0	84	3e
10E3	Monona silt loam, 14 to 20 percent slopes, severely eroded	11.23	7.28	38.0	0	70	4e
1C3	Ida silt loam, 5 to 9 percent slopes, severely eroded	5.06	3.28	58.0	0	63	3e
1D3	Ida silt loam, 9 to 14 percent slopes, severely eroded	1.1	0.71	32.0	0	61	3e
TOTALS		154.18(*)	100%	65.35	-	76.52	2.94

(*) Total acres may differ in the second decimal compared to the sum of each acreage soil. This is due to a round error because we only show the acres of each soil with two decimal.





 Boundary



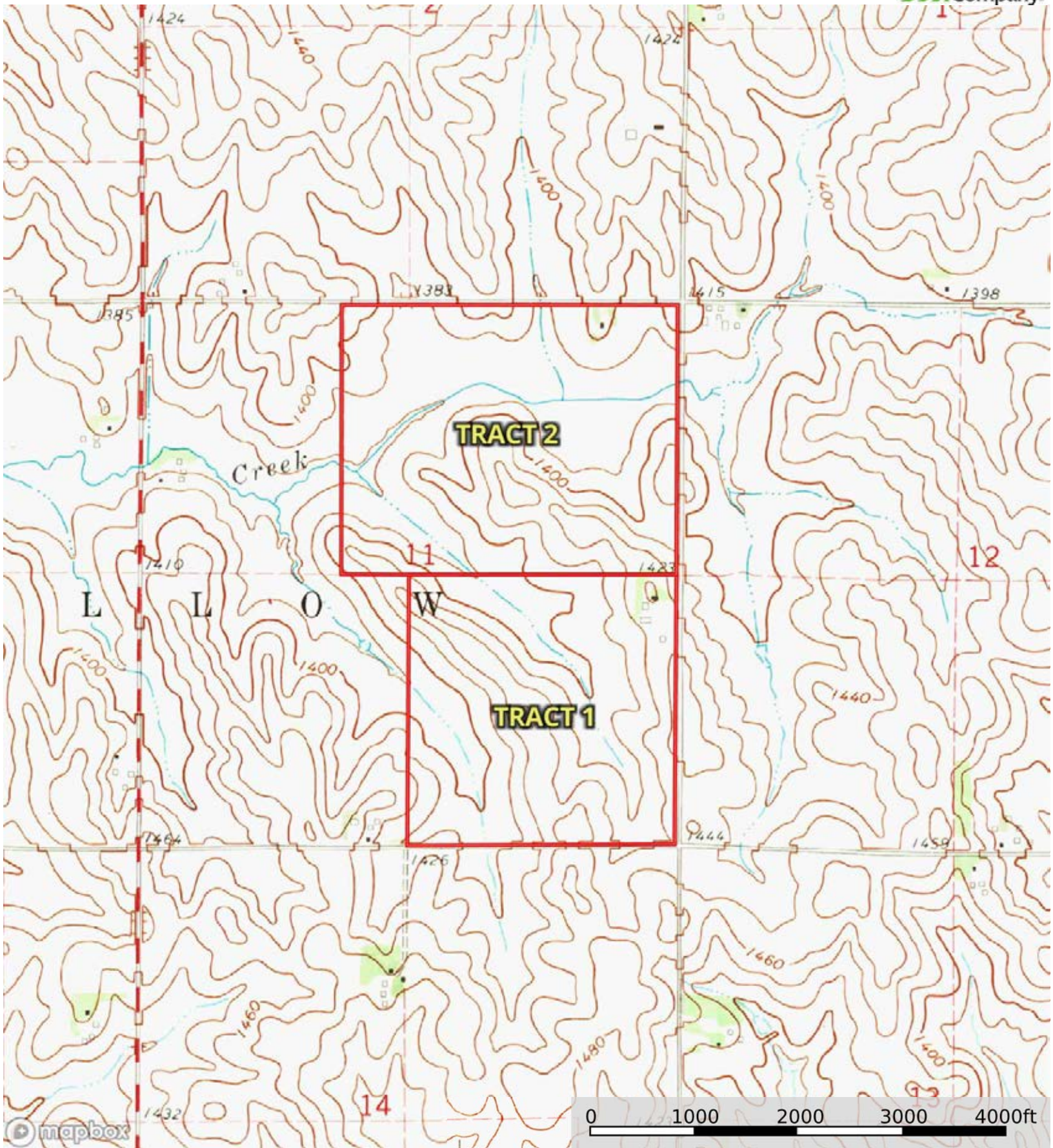
Boundary


Boundary 193.17 ac

SOIL CODE	SOIL DESCRIPTION	ACRES	%	CSR2	CPI	NCCPI	CAP
670	Rawles silt loam, 0 to 2 percent slopes, occasionally flooded	54.12	28.02	82.0	0	83	2w
10D2	Monona silt loam, 9 to 14 percent slopes, eroded	28.24	14.62	60.0	0	80	3e
10E2	Monona silt loam, 14 to 20 percent slopes, eroded	22.36	11.58	45.0	0	75	4e
10C2	Monona silt loam, 5 to 9 percent slopes, eroded	19.82	10.26	86.0	0	84	3e
12B	Napier silt loam, 2 to 5 percent slopes	19.03	9.85	93.0	0	89	2e
17B	Napier-Kennebec-Colo complex, 0 to 5 percent slopes	15.66	8.11	80.0	0	74	2e
1D3	Ida silt loam, 9 to 14 percent slopes, severely eroded	15.29	7.92	32.0	0	61	3e
10D3	Monona silt loam, 9 to 14 percent slopes, severely eroded	13.49	6.98	53.0	0	75	3e
1C3	Ida silt loam, 5 to 9 percent slopes, severely eroded	2.86	1.48	58.0	0	63	3e
10E3	Monona silt loam, 14 to 20 percent slopes, severely eroded	2.3	1.19	38.0	0	70	4e
TOTALS		193.17(*)	100%	68.97	-	78.85	2.67

(*) Total acres may differ in the second decimal compared to the sum of each acreage soil. This is due to a round error because we only show the acres of each soil with two decimal.





 Boundary