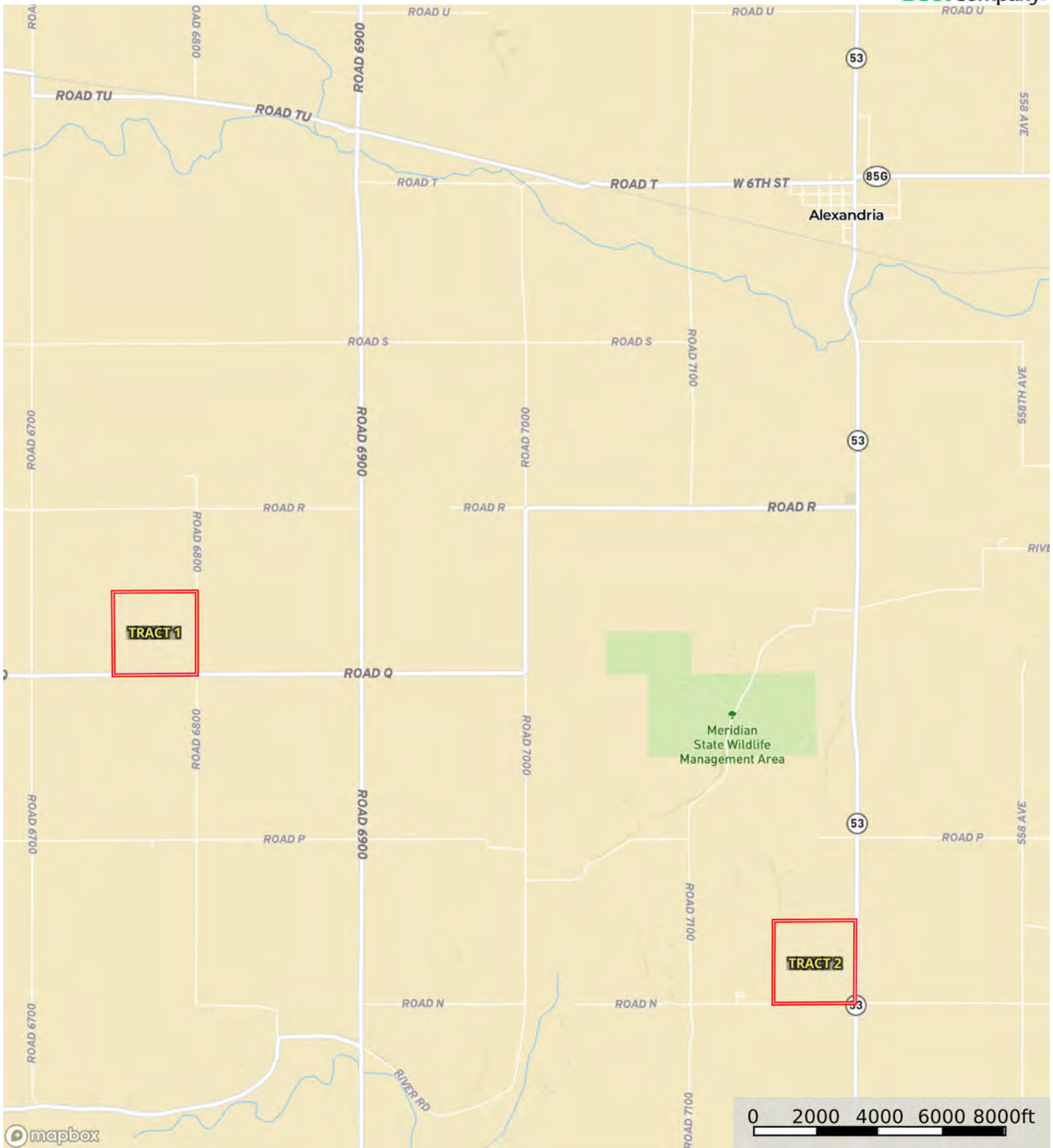


L-2400339

Thayer County, Nebraska, 320.51 AC +/-



Boundary



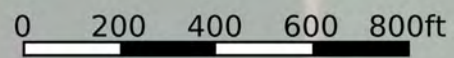
The information contained herein was obtained from sources deemed to be reliable. Land id™ Services makes no warranties or guarantees as to the completeness or accuracy thereof.

L-2400339

Thayer County, Nebraska, 320.51 AC +/-



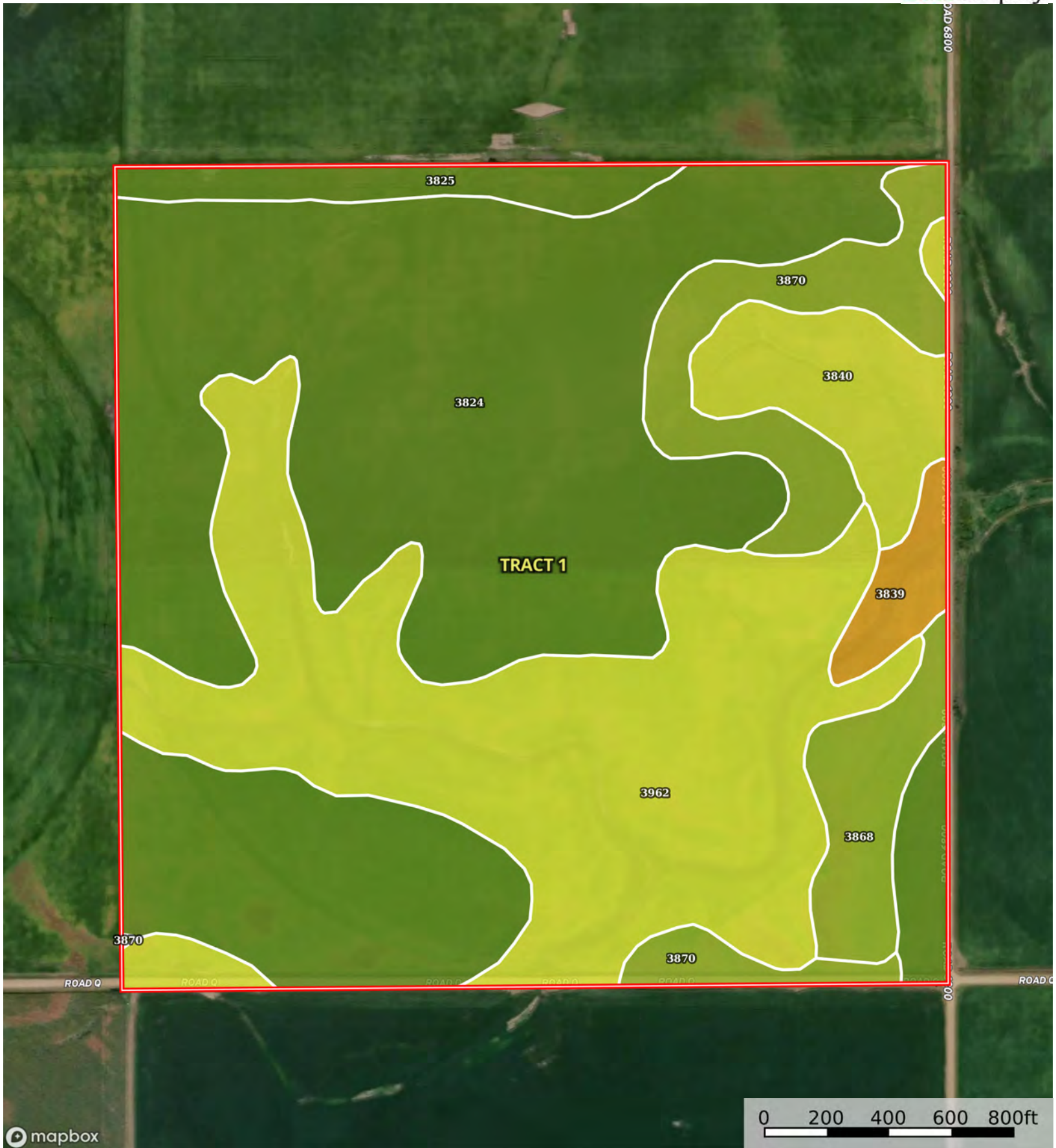
Boundary



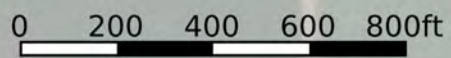


L-2400339

Thayer County, Nebraska, 320.51 AC +/-



Boundary



The information contained herein was obtained from sources deemed to be reliable. Land id™ Services makes no warranties or guarantees as to the completeness or accuracy thereof.

| Boundary 162.04 ac

| SOIL CODE | SOIL DESCRIPTION   | ACRES         | %     | CPI | NCCPI | CAP  |
|-----------|--|---------------|-------|-----|-------|------|
| 3824      | Crete silt loam, 0 to 1 percent slopes                   | 80.15         | 49.47 | 0   | 63    | 2s   |
| 3962      | Hastings silty clay loam, 7 to 11 percent slopes, eroded | 47.96         | 29.6  | 0   | 57    | 4e   |
| 3870      | Hastings silty clay loam, 3 to 7 percent slopes, eroded  | 11.76         | 7.26  | 0   | 58    | 3e   |
| 3840      | Geary silty clay loam, 7 to 11 percent slopes, eroded    | 8.42          | 5.2   | 0   | 62    | 4e   |
| 3868      | Hastings silt loam, 3 to 7 percent slopes                | 6.08          | 3.75  | 0   | 68    | 3e   |
| 3825      | Crete silt loam, 1 to 3 percent slopes                   | 4.77          | 2.94  | 0   | 62    | 2e   |
| 3839      | Geary silty clay loam, 11 to 30 percent slopes           | 2.9           | 1.79  | 0   | 52    | 6e   |
| TOTALS    |  | 162.0<br>4(*) | 100%  | -   | 60.77 | 2.88 |

(\*) Total acres may differ in the second decimal compared to the sum of each acreage soil. This is due to a round error because we only show the acres of each soil with two decimal.





L-2400339

Thayer County, Nebraska, 320.51 AC +/-



mapbox

Boundary



The information contained herein was obtained from sources deemed to be reliable. Land id™ Services makes no warranties or guarantees as to the completeness or accuracy thereof.





Boundary

| Boundary 158.18 ac

| SOIL CODE | SOIL DESCRIPTION  | ACRES     | %     | CPI | NCCPI | CAP  |
|-----------|---|-----------|-------|-----|-------|------|
| 3866      | Hastings silt loam, 1 to 3 percent slopes                       | 54.42     | 34.41 | 0   | 68    | 2e   |
| 3800      | Crete silt loam, 0 to 1 percent slopes, loess plains and breaks | 37.02     | 23.41 | 0   | 65    | 2s   |
| 3955      | Geary silty clay loam, 7 to 11 percent slopes, severely eroded  | 26.05     | 16.47 | 0   | 55    | 4e   |
| 3870      | Hastings silty clay loam, 3 to 7 percent slopes, eroded         | 18.12     | 11.46 | 0   | 58    | 3e   |
| 3962      | Hastings silty clay loam, 7 to 11 percent slopes, eroded        | 17.95     | 11.35 | 0   | 57    | 4e   |
| 4161      | Kipson silt loam, 7 to 30 percent slopes                        | 4.62      | 2.92  | 0   | 23    | 6s   |
| TOTALS    |   | 158.18(*) | 100%  | -   | 61.45 | 2.79 |

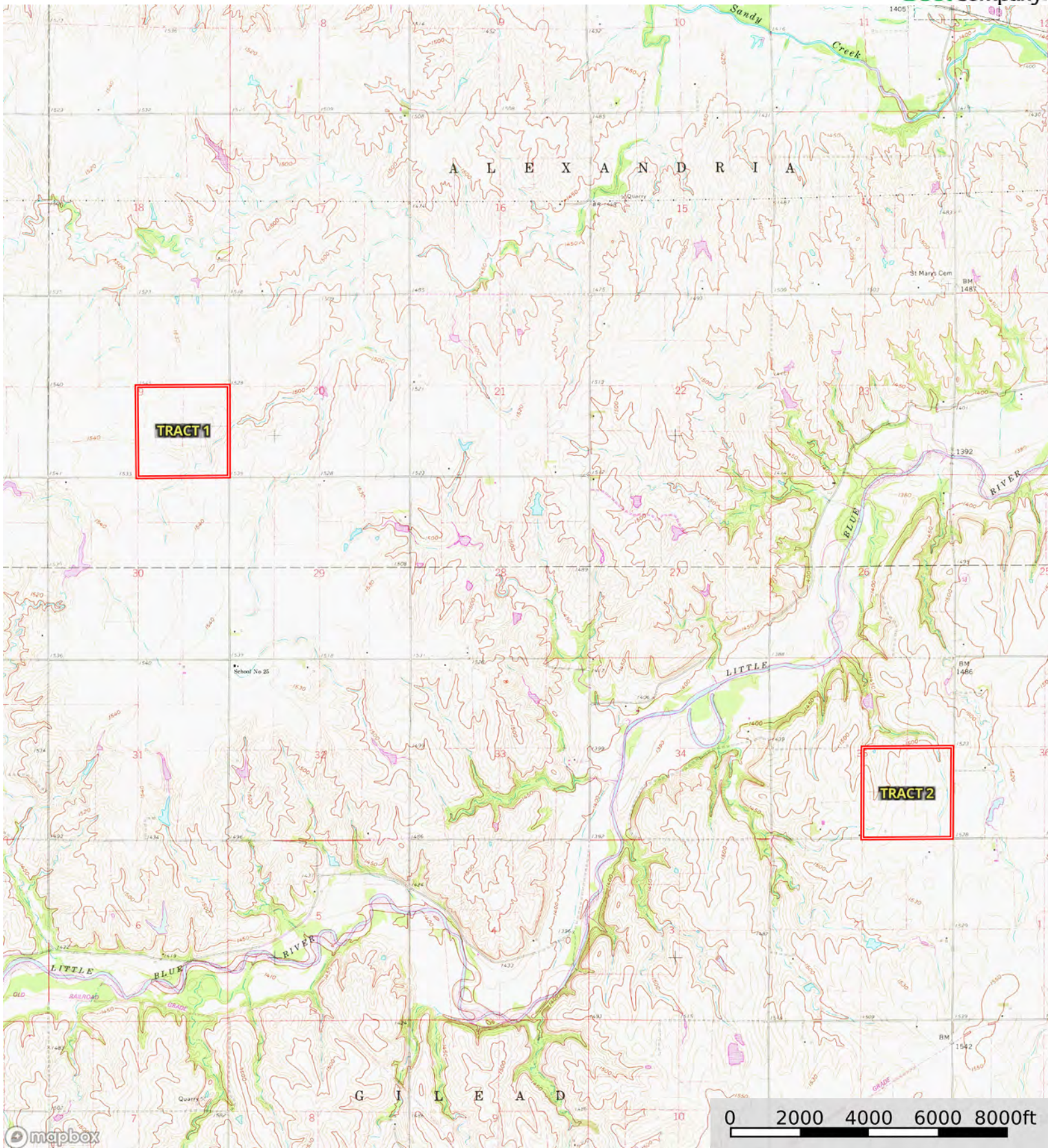
(\*) Total acres may differ in the second decimal compared to the sum of each acreage soil. This is due to a round error because we only show the acres of each soil with two decimal.





L-2400339

Thayer County, Nebraska, 320.51 AC +/-



Boundary



The information contained herein was obtained from sources deemed to be reliable. Land id™ Services makes no warranties or guarantees as to the completeness or accuracy thereof.