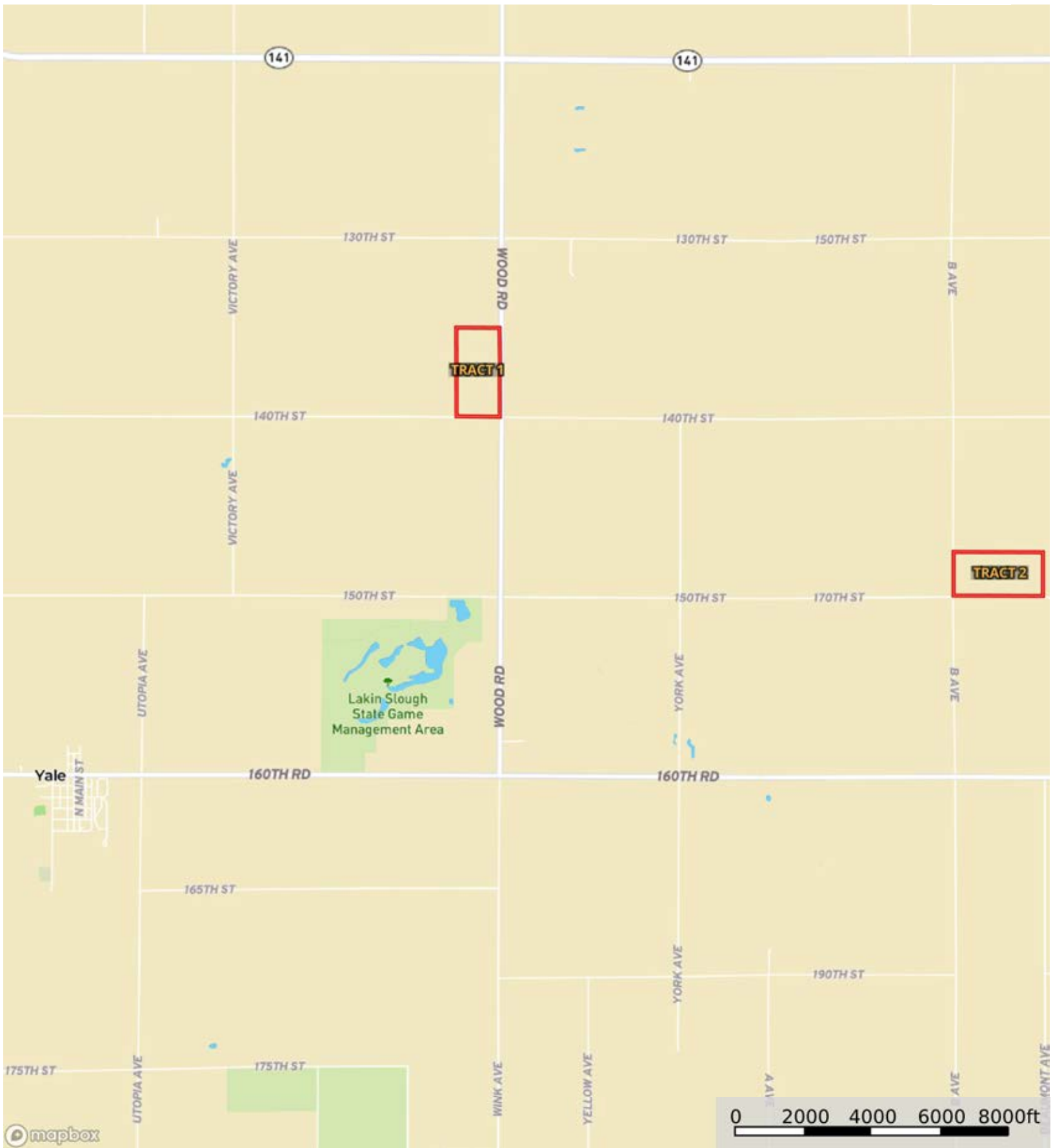


L-2300191

Guthrie County, Dallas County, Iowa, 157 AC +/-



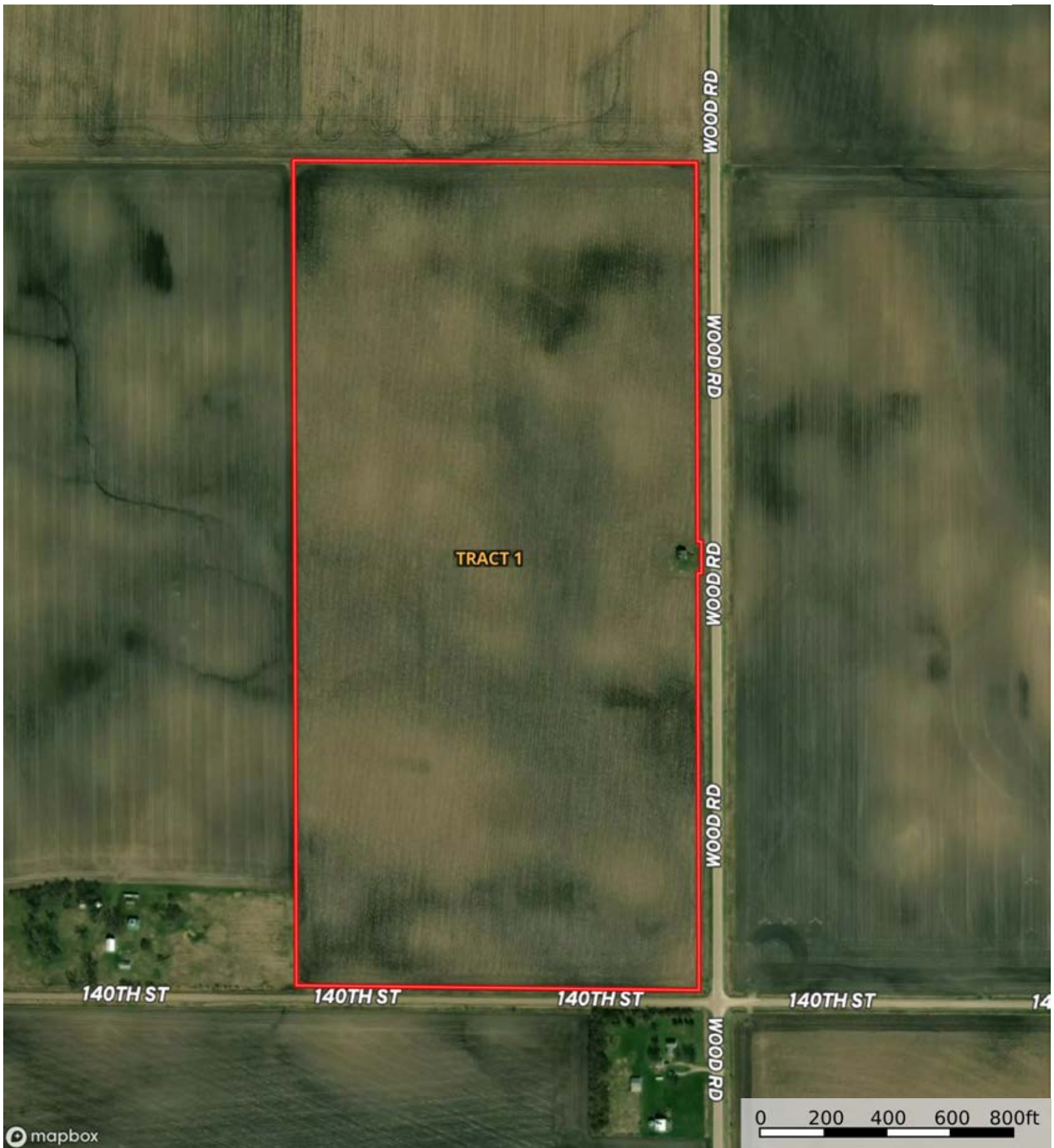
 Boundary



The information contained herein was obtained from sources deemed to be reliable. MapRight Services makes no warranties or guarantees as to the completeness or accuracy thereof.

L-2300191

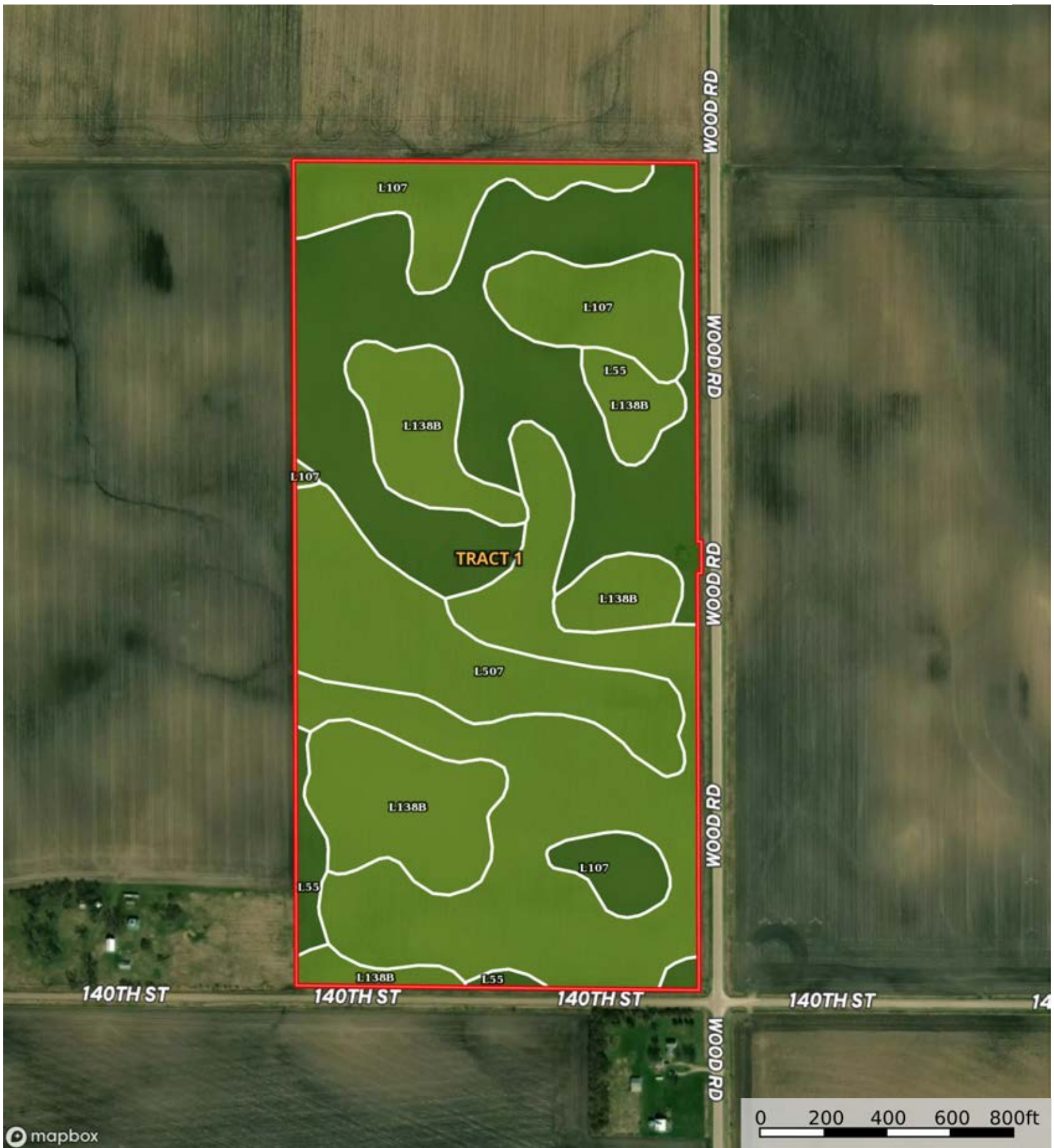
Guthrie County, Dallas County, Iowa, 157 AC +/-



 Boundary

L-2300191

Guthrie County, Dallas County, Iowa, 157 AC +/-



Boundary

|  Boundary 76.01 ac

SOIL CODE	SOIL DESCRIPTION	ACRES	%	CSR2	CPI	NCCPI	CAP
L107	Webster clay loam, Bemis moraine, 0 to 2 percent slopes	28.83	37.94	88.0	0	84	2w
L55	Nicollet loam, 1 to 3 percent slopes	24.37	32.07	91.0	0	86	1
L138B	Clarion loam, Bemis moraine, 2 to 6 percent slopes	13.77	18.12	88.0	0	81	2e
L507	Canisteo clay loam, Bemis moraine, 0 to 2 percent slopes	9.04	11.9	87.0	0	82	2w
TOTALS		76.01(*)	100%	88.87	-	83.88	1.68


(*) Total acres may differ in the second decimal compared to the sum of each acreage soil. This is due to a round error because we only show the acres of each soil with two decimal.



L-2300191

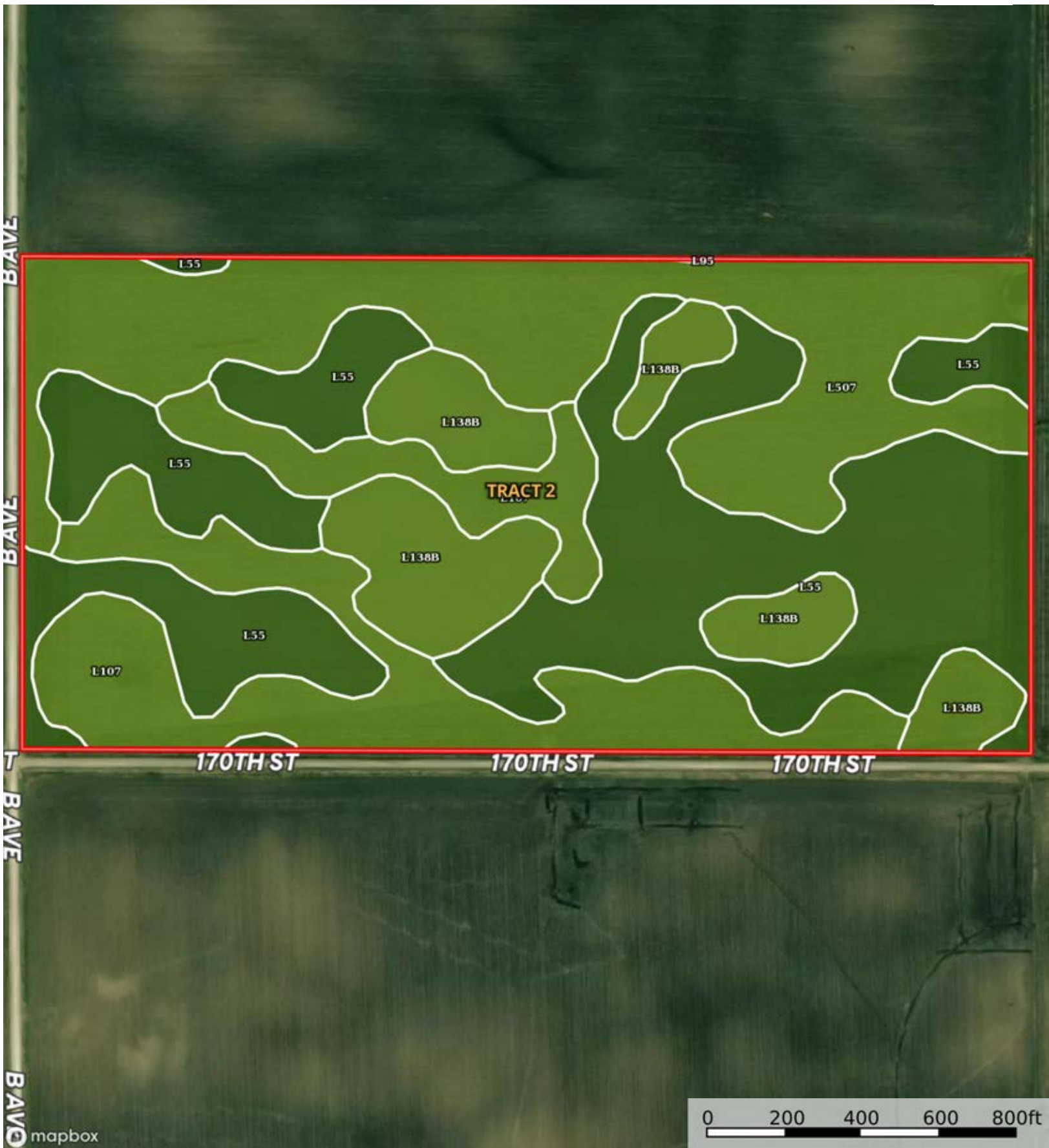
Guthrie County, Dallas County, Iowa, 157 AC +/-



 Boundary

L-2300191

Guthrie County, Dallas County, Iowa, 157 AC +/-



Boundary

|  Boundary 77.18 ac

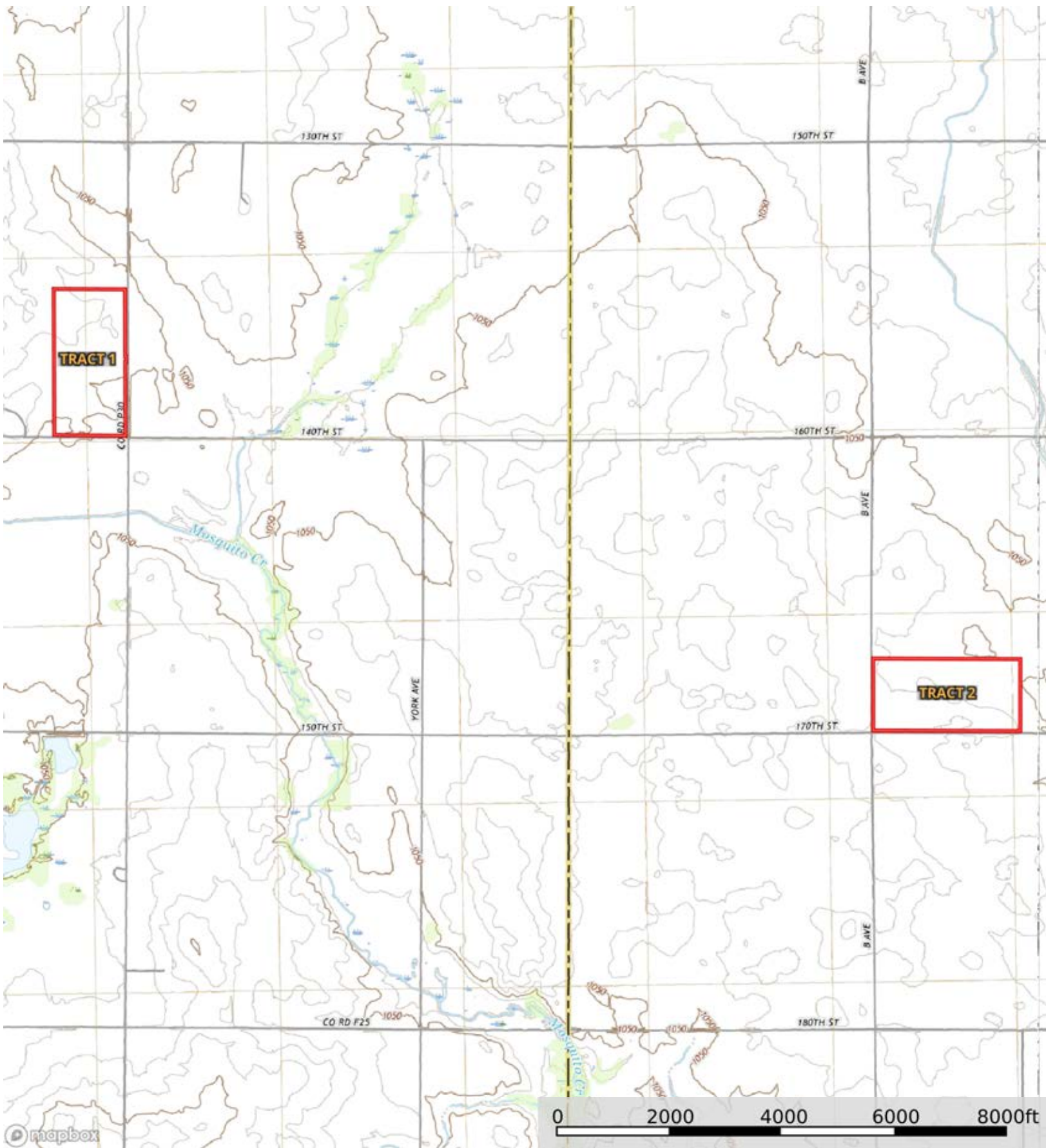
SOIL CODE	SOIL DESCRIPTION	ACRES	%	CSR2	CPI	NCCPI	CAP
L55	Nicollet loam, 1 to 3 percent slopes	30.04	38.92	91.0	0	86	1
L507	Canisteo clay loam, Bemis moraine, 0 to 2 percent slopes	20.01	25.93	87.0	0	82	2w
L107	Webster clay loam, Bemis moraine, 0 to 2 percent slopes	16.62	21.53	88.0	0	84	2w
L138B	Clarion loam, Bemis moraine, 2 to 6 percent slopes	10.49	13.59	88.0	0	81	2e
L95	Harps clay loam, Bemis moraine, 0 to 2 percent slopes	0.02	0.03	75.0	0	81	2w
TOTALS		77.18(*)	100%	88.91	-	83.85	1.61

(*) Total acres may differ in the second decimal compared to the sum of each acreage soil. This is due to a round error because we only show the acres of each soil with two decimal.



L-2300191

Guthrie County, Dallas County, Iowa, 157 AC +/-



Boundary