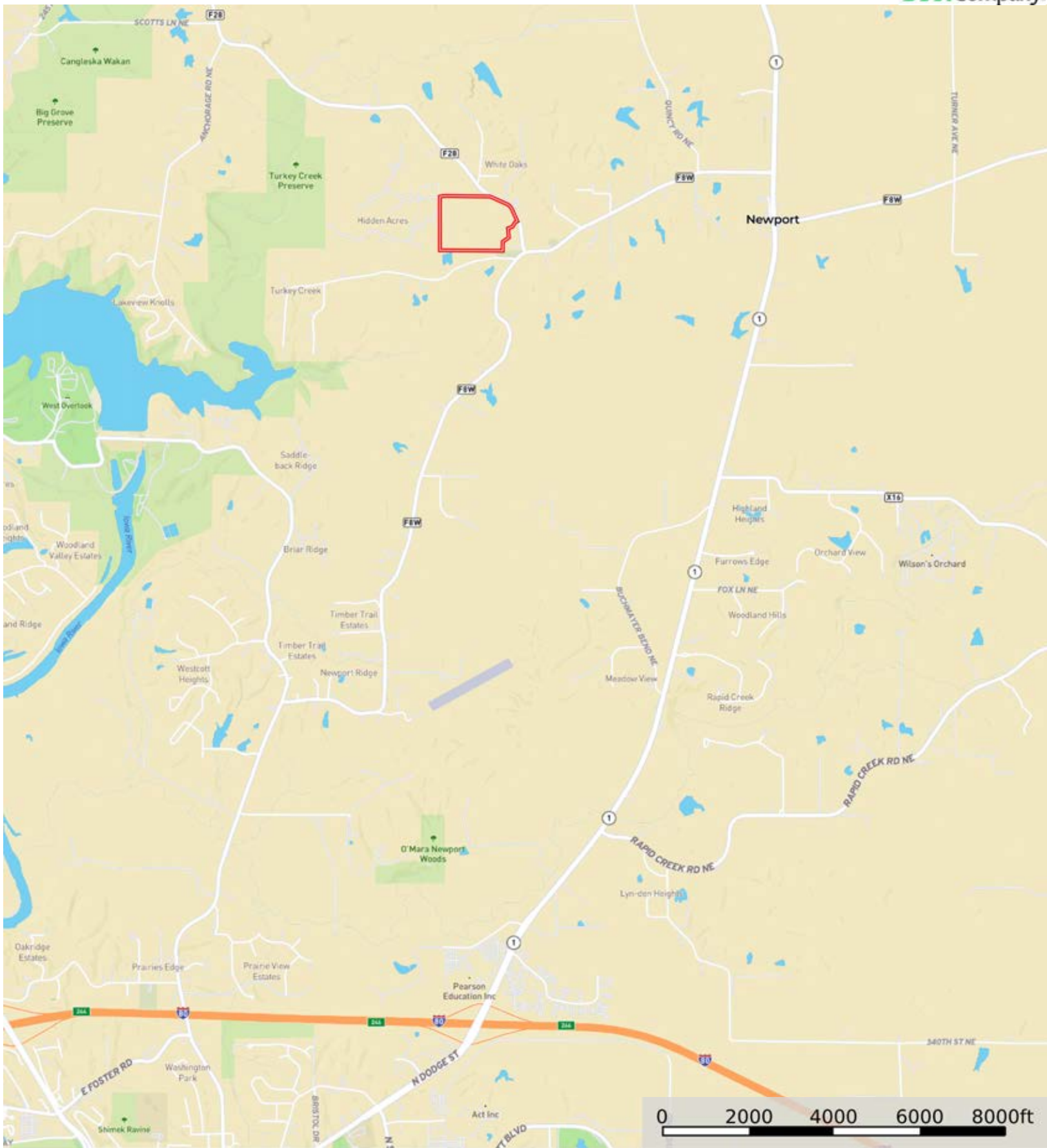


L-2400338

Johnson County, Iowa, 46.71 AC +/-



 Boundary





L-2400338

Johnson County, Iowa, 46.71 AC +/-

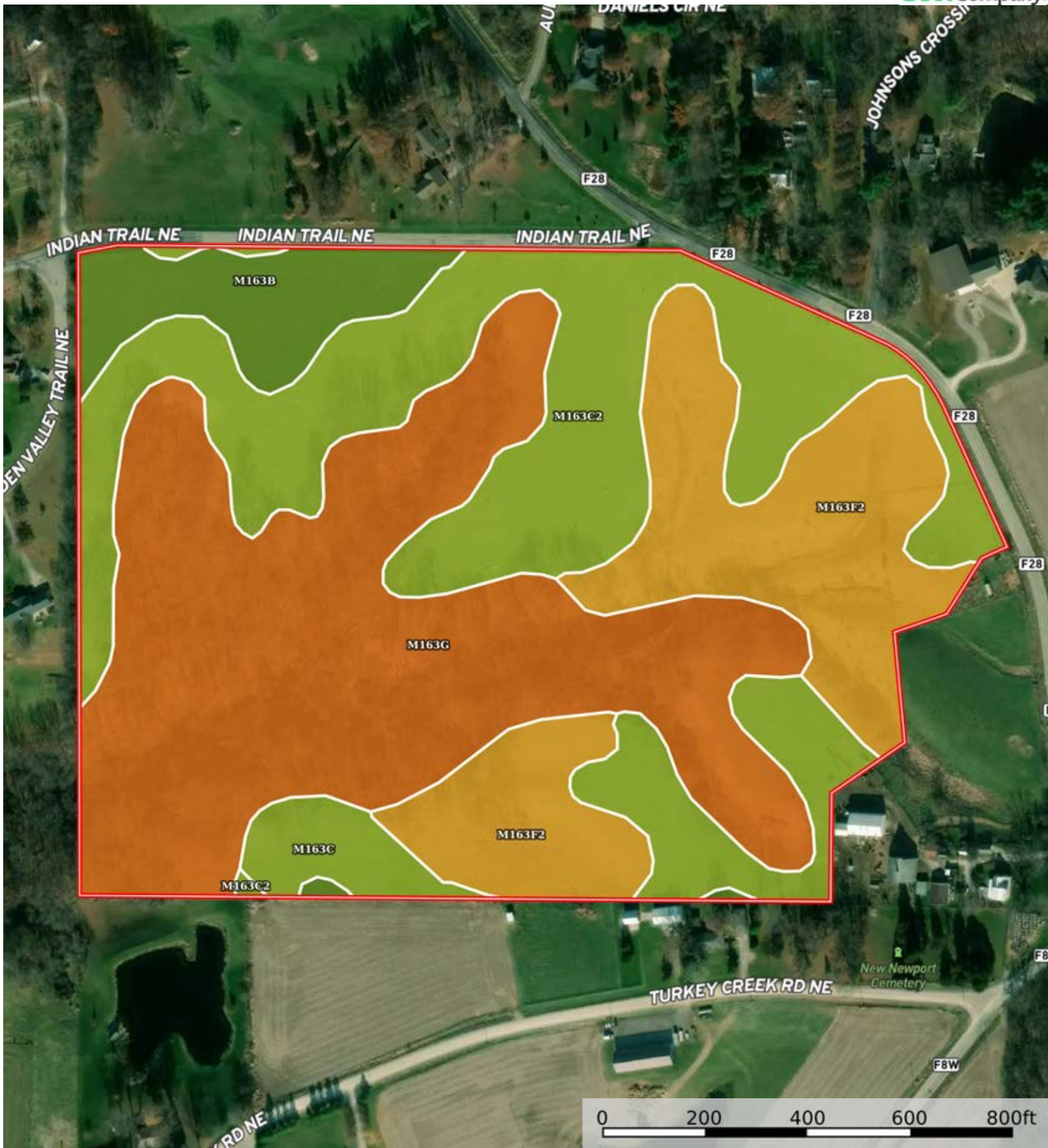


 Boundary



L-2400338

Johnson County, Iowa, 46.71 AC +/-



Boundary

Boundary 46.67 ac

SOIL CODE	SOIL DESCRIPTION	ACRES	%	CSR2	CPI	NCCPI	CAP
M163G	Fayette silt loam, till plain, 25 to 40 percent slopes	18.07	38.73	5.0	0	20	7e
M163C2	Fayette silt loam, till plain, 5 to 9 percent slopes, eroded	14.58	31.25	76.0	0	82	3e
M163F2	Fayette silt loam, till plain, 18 to 25 percent slopes, eroded	9.69	20.77	18.0	0	60	6e
M163B	Fayette silt loam, till plain, 2 to 5 percent slopes	3.02	6.47	84.0	0	87	2e
M163C	Fayette silt loam, till plain, 5 to 9 percent slopes	1.31	2.81	79.0	0	87	3e
TOTALS		46.67(*)	100%	37.08	-	53.9	5.11

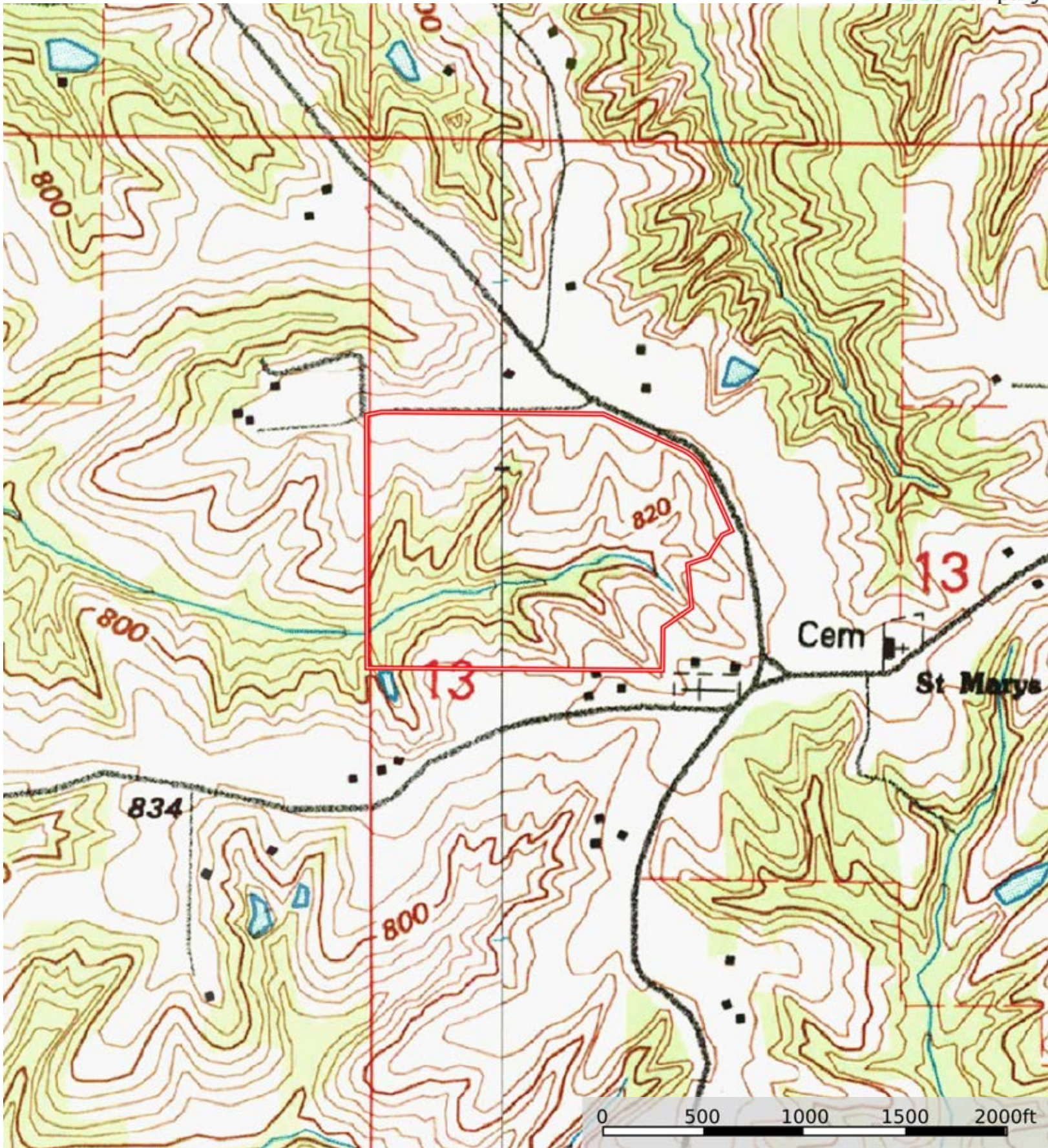
(\*) Total acres may differ in the second decimal compared to the sum of each acreage soil. This is due to a round error because we only show the acres of each soil with two decimal.





L-2400338

Johnson County, Iowa, 46.71 AC +/-



Boundary