

L-2500098

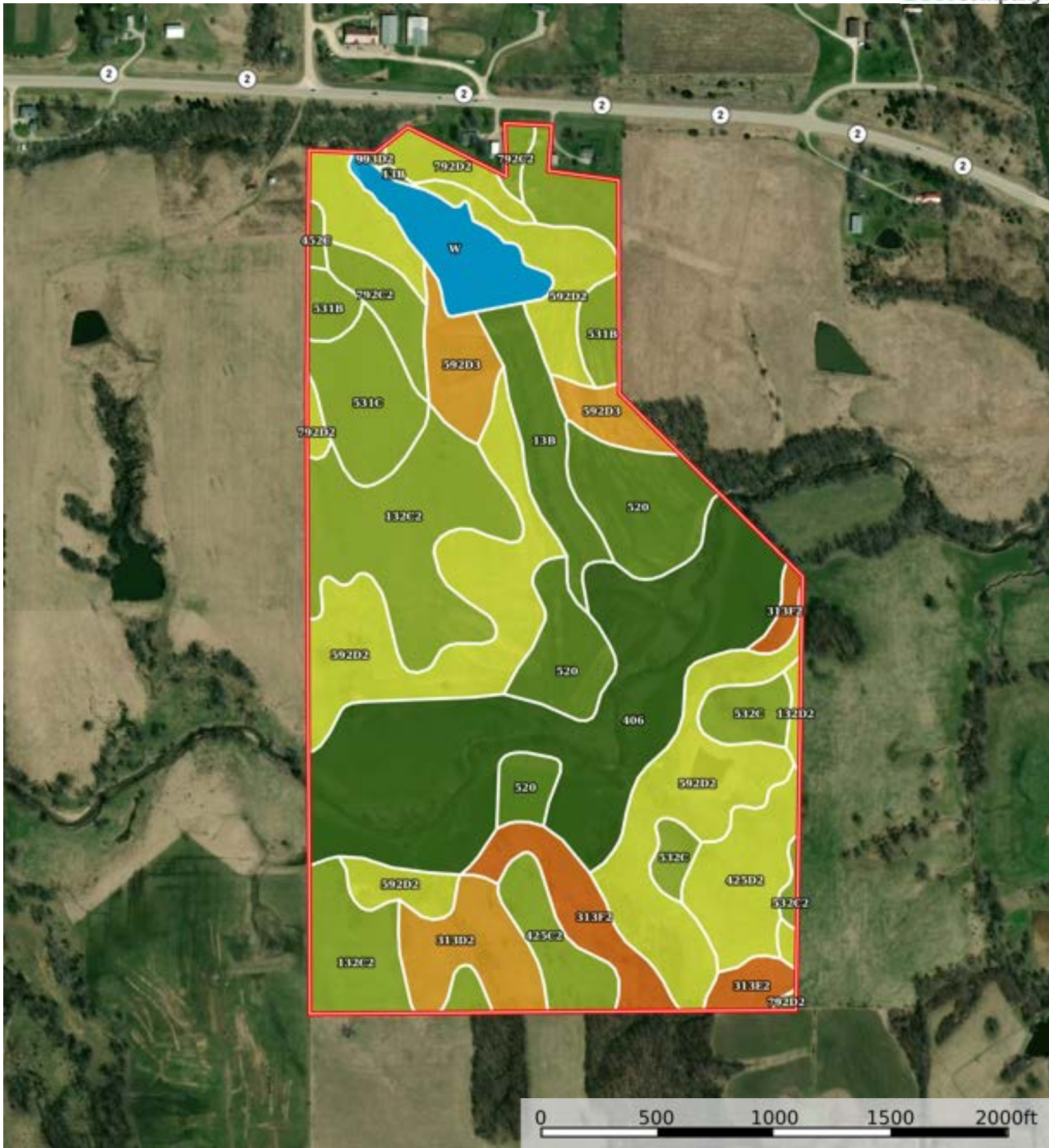
Appanoose County, Iowa, 150.4 AC +/-



Boundary



The information contained herein was obtained from sources deemed to be reliable. Land ID™ Services makes no warranties or guarantees as to the completeness or accuracy thereof.



Boundary

Boundary 153.66 ac

SOIL CODE	SOIL DESCRIPTION	ACRES	%	CSR2	CPI	NCCPI	CAP
592D2	Mystic silt loam, 9 to 14 percent slopes, moderately eroded	30.46	19.82	10.0	0	68	4e
406	Kennebec-Amana silt loams complex	29.52	19.21	88.0	0	92	1
132C2	Weller silt loam, 5 to 9 percent slopes, moderately eroded	18.19	11.83	59.0	0	84	3e
520	Coppock silt loam	11.81	7.68	79.0	0	85	2w
425D2	Keswick loam, 9 to 14 percent slopes, moderately eroded	5.85	3.81	9.0	0	55	4e
531C	Kniffin silt loam, 5 to 9 percent slopes	5.69	3.7	52.0	0	68	3e
531B	Kniffin silt loam, 2 to 5 percent slopes	5.53	3.6	55.0	0	69	3e
313D2	Gosport-Clanton silt loams, 9 to 14 percent slopes, moderately eroded complex	5.52	3.59	14.0	0	41	6e
313F2	Gosport-Clanton silt loams, 18 to 24 percent slopes, moderately eroded complex	5.48	3.57	5.0	0	33	7e
592D3	Mystic soils, 9 to 14 percent slopes, severely eroded	5.45	3.55	5.0	0	69	6e
13B	Olmitz-Vesser-Colo complex, 2 to 5 percent slopes	5.43	3.53	79.0	0	86	2e
W	Water	5.19	3.38	-	0	-	-
425C2	Keswick loam, 5 to 9 percent slopes, moderately eroded	3.56	2.32	27.0	0	58	3e
792C2	Armstrong loam, 5 to 9 percent slopes, moderately eroded	3.34	2.17	31.0	0	66	3e
532C	Rathbun silt loam, 5 to 9 percent slopes	3.33	2.17	47.0	0	78	3e
993D2	Armstrong-Gara loams, 9 to 14 percent slopes, moderately eroded complex	3.23	2.1	22.0	0	66	4e
792D2	Armstrong loam, 9 to 14 percent slopes, moderately eroded	3.08	2.0	9.0	0	63	4e
313E2	Gosport-Clanton silt loams, 14 to 18 percent slopes, moderately eroded complex	1.58	1.03	8.0	0	39	7e
132D2	Weller silt loam, 9 to 14 percent slopes, moderately eroded	0.51	0.33	33.0	0	80	4e
532C2	Rathbun silty clay loam, 5 to 9 percent slopes, moderately eroded	0.46	0.3	44.0	0	73	3e
452C	Lineville silt loam, 5 to 9 percent slopes	0.45	0.29	48.0	0	75	3e
TOTALS		153.66(*)	100%	43.26	-	71.07	3.19

(*) Total acres may differ in the second decimal compared to the sum of each acreage soil. This is due to a round error because we only show the acres of each soil with two decimal.

Capability Legend

Increased Limitations and Hazards

Decreased Adaptability and Freedom of Choice Users

Land, Capability

								
	1	2	3	4	5	6	7	8
'Wild Life'	•	•	•	•	•	•	•	•
Forestry	•	•	•	•	•	•	•	
Limited	•	•	•	•	•	•	•	
Moderate	•	•	•	•	•	•		
Intense	•	•	•	•	•			
Limited	•	•	•	•				
Moderate	•	•	•					
Intense	•	•						
Very Intense	•							

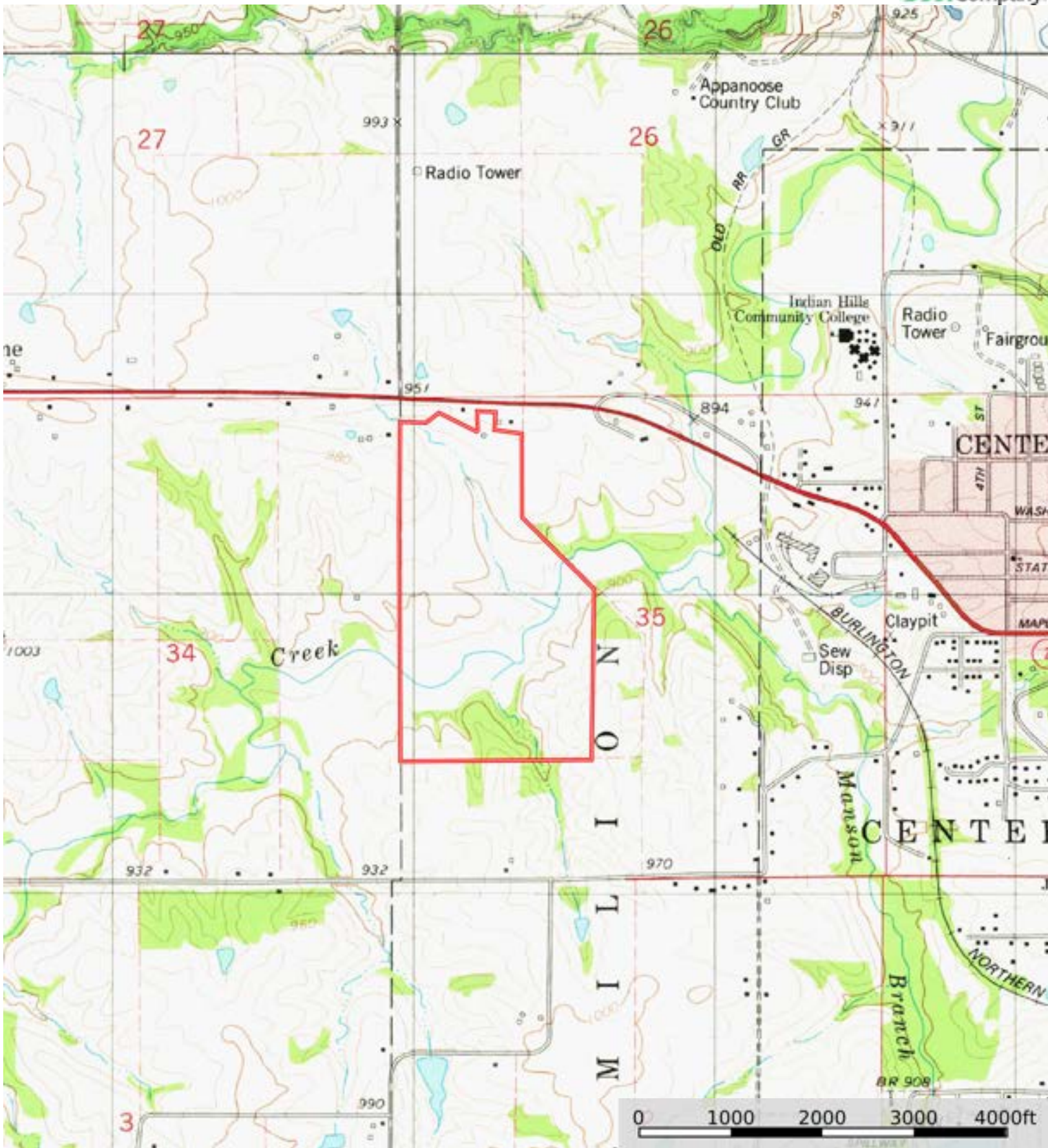
Grazing Cultivation

(c) climatic limitations (e) susceptibility to erosion

(s) soil limitations within the rooting zone (w) excess of water

L-2500098

Appanoose County, Iowa, 150.4 AC +/-



Boundary



The information contained herein was obtained from sources deemed to be reliable. Land id™ Services makes no warranties or guarantees as to the completeness or accuracy thereof.