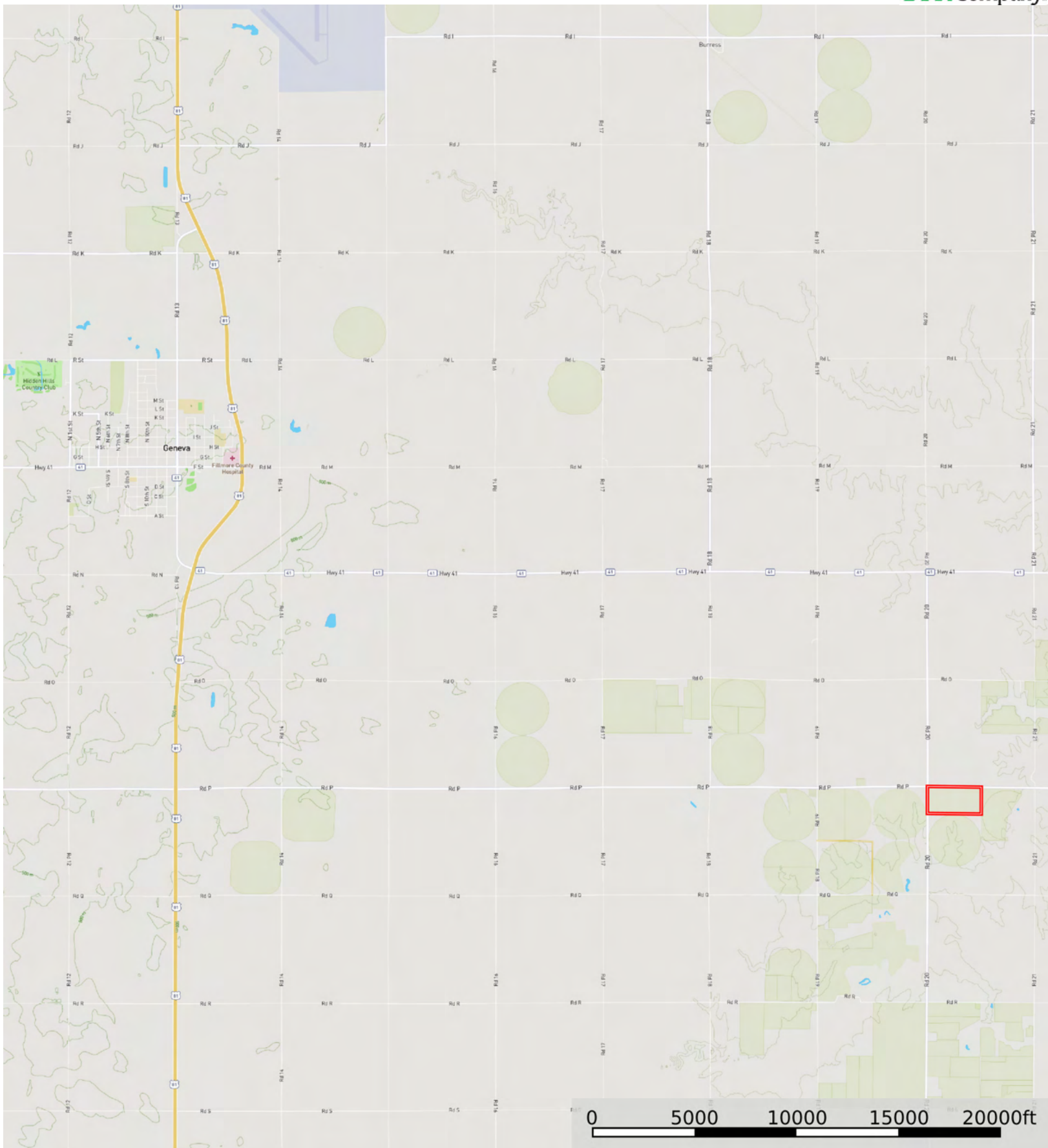
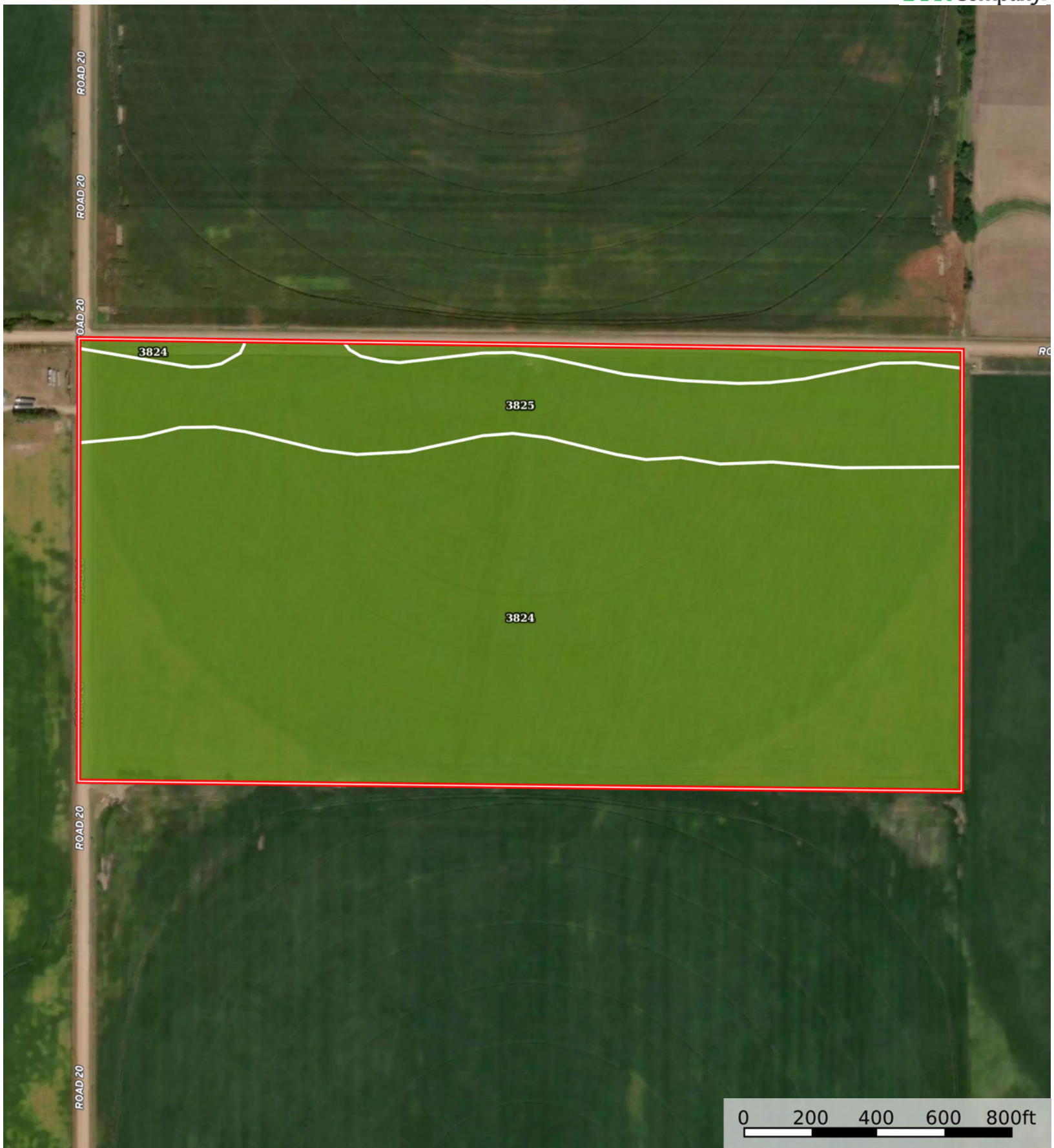


Loretta Meistrell and the Phillips & Sondra Upham Family

Fillmore County, Nebraska, 80 AC +/-



 Boundary



 Boundary

|  Boundary 80.45 ac

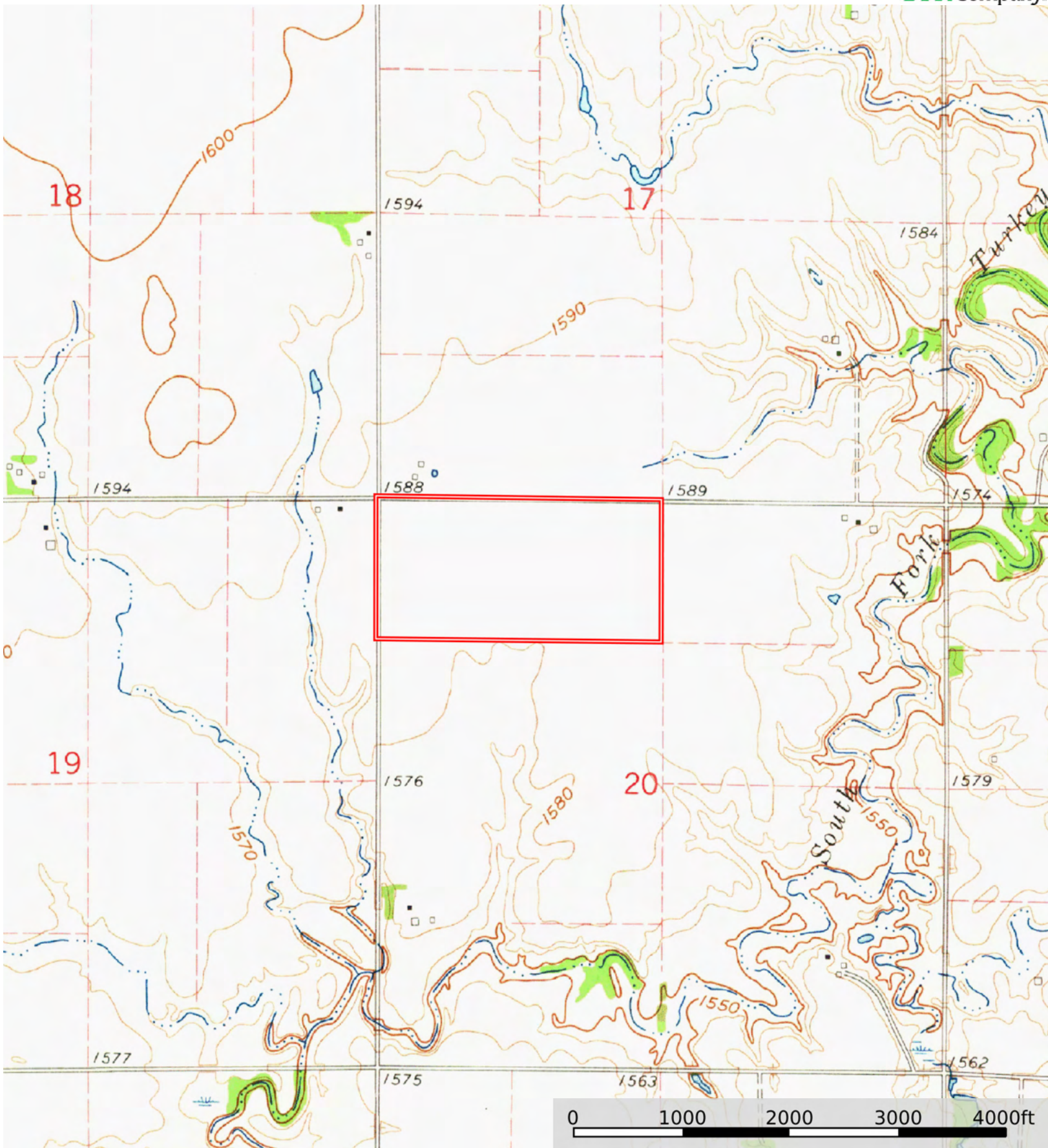
SOIL CODE	SOIL DESCRIPTION	ACRES	%	CPI	NCCPI	CAP
3824	Crete silt loam, 0 to 1 percent slopes	64.63	80.33	0	63	2s
3825	Crete silt loam, 1 to 3 percent slopes	15.82	19.66	0	62	2e
TOTALS		80.45(*)	100%	-	62.8	2.0

(*) Total acres may differ in the second decimal compared to the sum of each acreage soil. This is due to a round error because we only show the acres of each soil with two decimal.



Loretta Meistrell and the Phillips & Sondra Upham Family

Fillmore County, Nebraska, 80 AC +/-



 Boundary



The information contained herein was obtained from sources deemed to be reliable. Land id™ Services makes no warranties or guarantees as to the completeness or accuracy thereof.