



Boundary



L-2400491

Thayer County, Nebraska, 154.14 AC +/-



Boundary



The information contained herein was obtained from sources deemed to be reliable. Land ID™ Services makes no warranties or guarantees as to the completeness or accuracy thereof.

L-2400491

Thayer County, Nebraska, 154.14 AC +/-



Boundary



The information contained herein was obtained from sources deemed to be reliable. Land id™ Services makes no warranties or guarantees as to the completeness or accuracy thereof.

| Boundary 153.97 ac

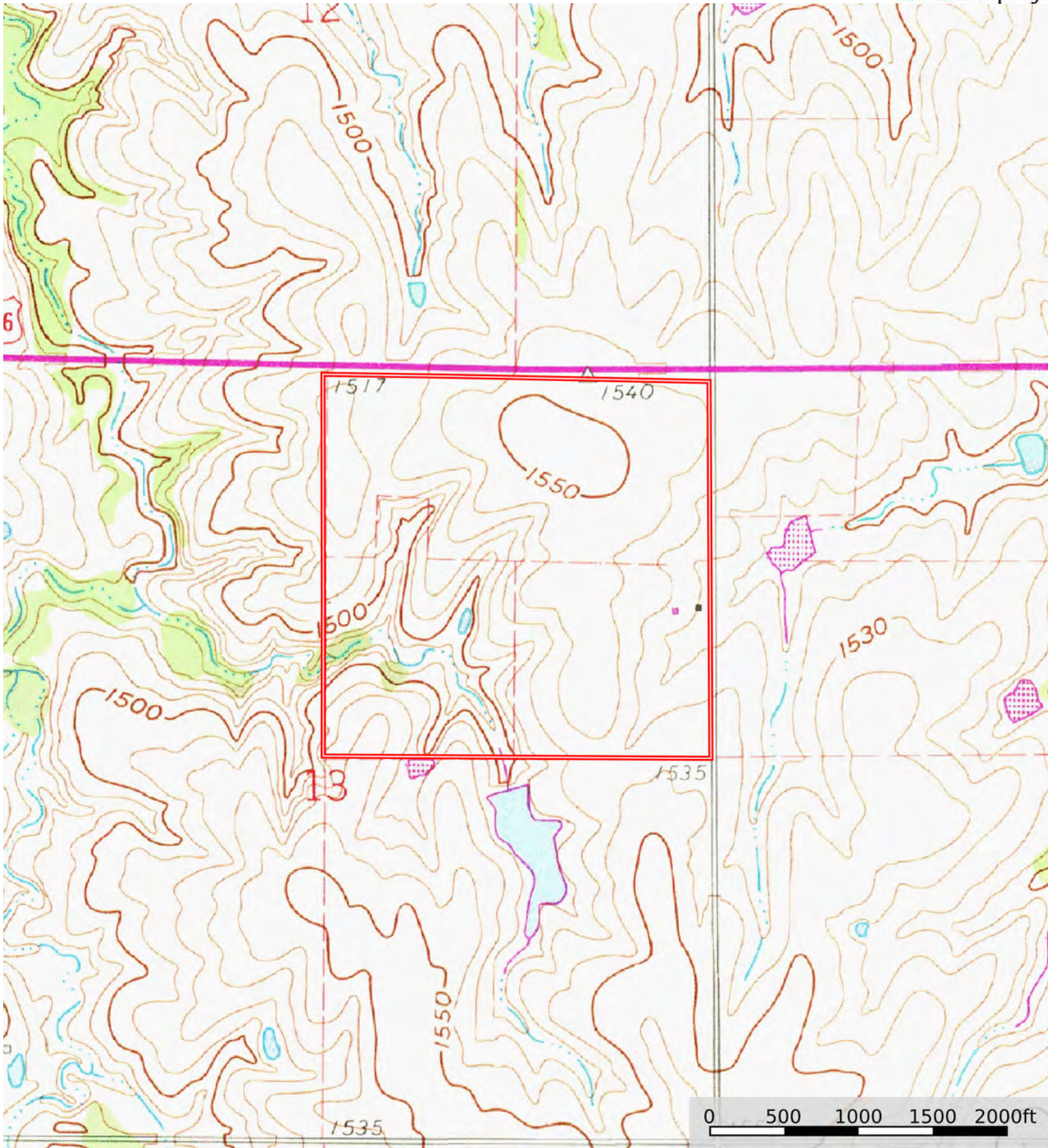
SOIL CODE	SOIL DESCRIPTION	ACRES	%	CPI	NCCPI	CAP
3870	Hastings silty clay loam, 3 to 7 percent slopes, eroded	52.37	34.01	0	58	3e
3800	Crete silt loam, 0 to 1 percent slopes, loess plains and breaks	32.88	21.35	0	65	2s
3191	Jansen-Meadin complex, 11 to 30 percent slopes, eroded	28.73	18.66	0	26	6e
3955	Geary silty clay loam, 7 to 11 percent slopes, severely eroded	23.34	15.16	0	55	4e
3846	Geary silty clay loam, 3 to 7 percent slopes, eroded	6.62	4.3	0	62	3e
3969	Hastings soils, eroded	3.81	2.47	0	58	4e
3840	Geary silty clay loam, 7 to 11 percent slopes, eroded	3.19	2.07	0	62	4e
3190	Jansen-Meadin complex, 6 to 11 percent slopes, eroded	1.98	1.29	0	42	4e
3841	Geary silty clay loam, 11 to 30 percent slopes, severely eroded	1.05	0.68	0	51	6e
TOTALS		153.97(*)	100%	-	53.07	3.58

(*) Total acres may differ in the second decimal compared to the sum of each acreage soil. This is due to a round error because we only show the acres of each soil with two decimal.



L-2400491

Thayer County, Nebraska, 154.14 AC +/-



Boundary



The information contained herein was obtained from sources deemed to be reliable. Land id™ Services makes no warranties or guarantees as to the completeness or accuracy thereof.