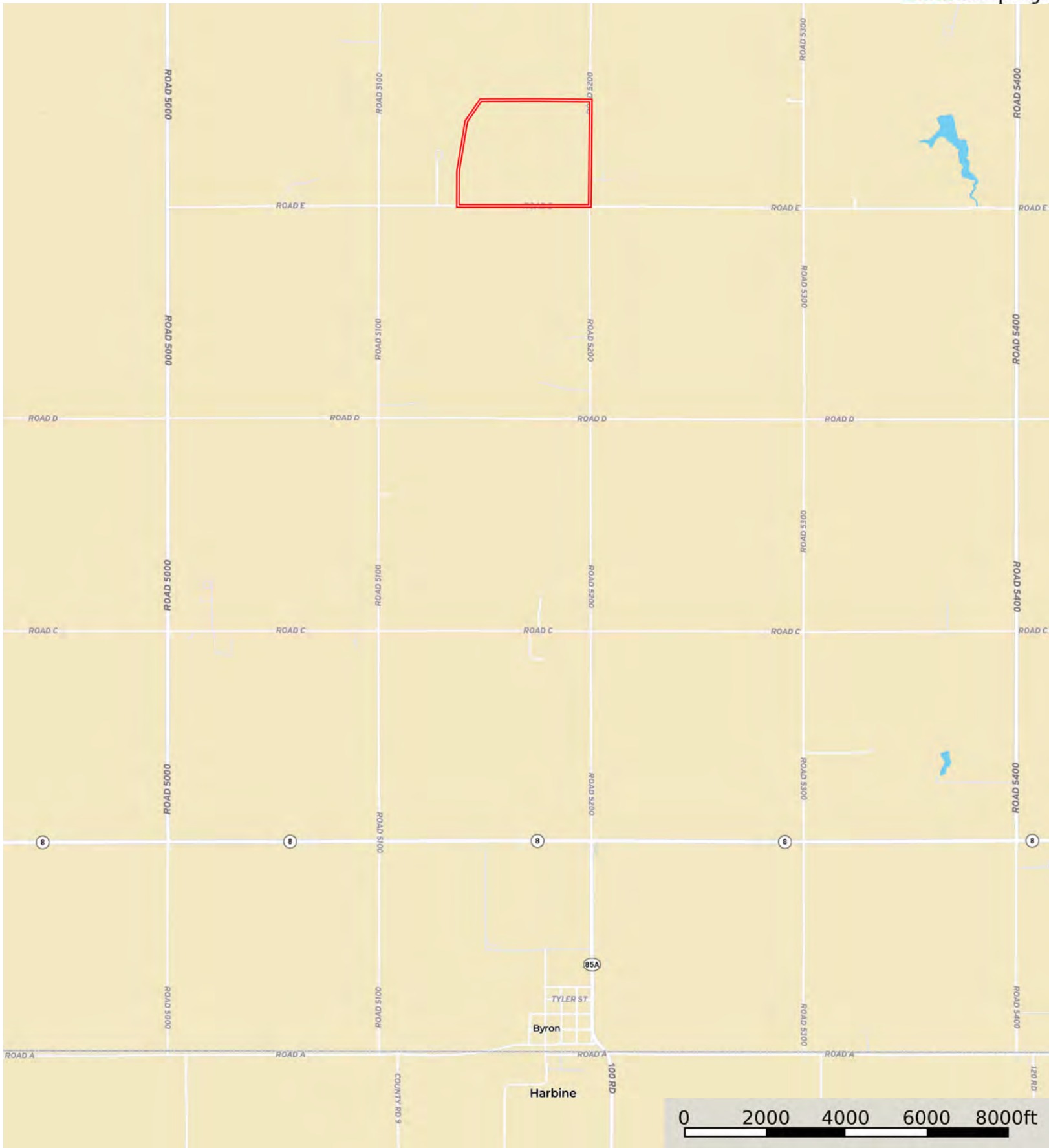


L-2400510

Thayer County, Nebraska, 191.46 AC +/-



Boundary



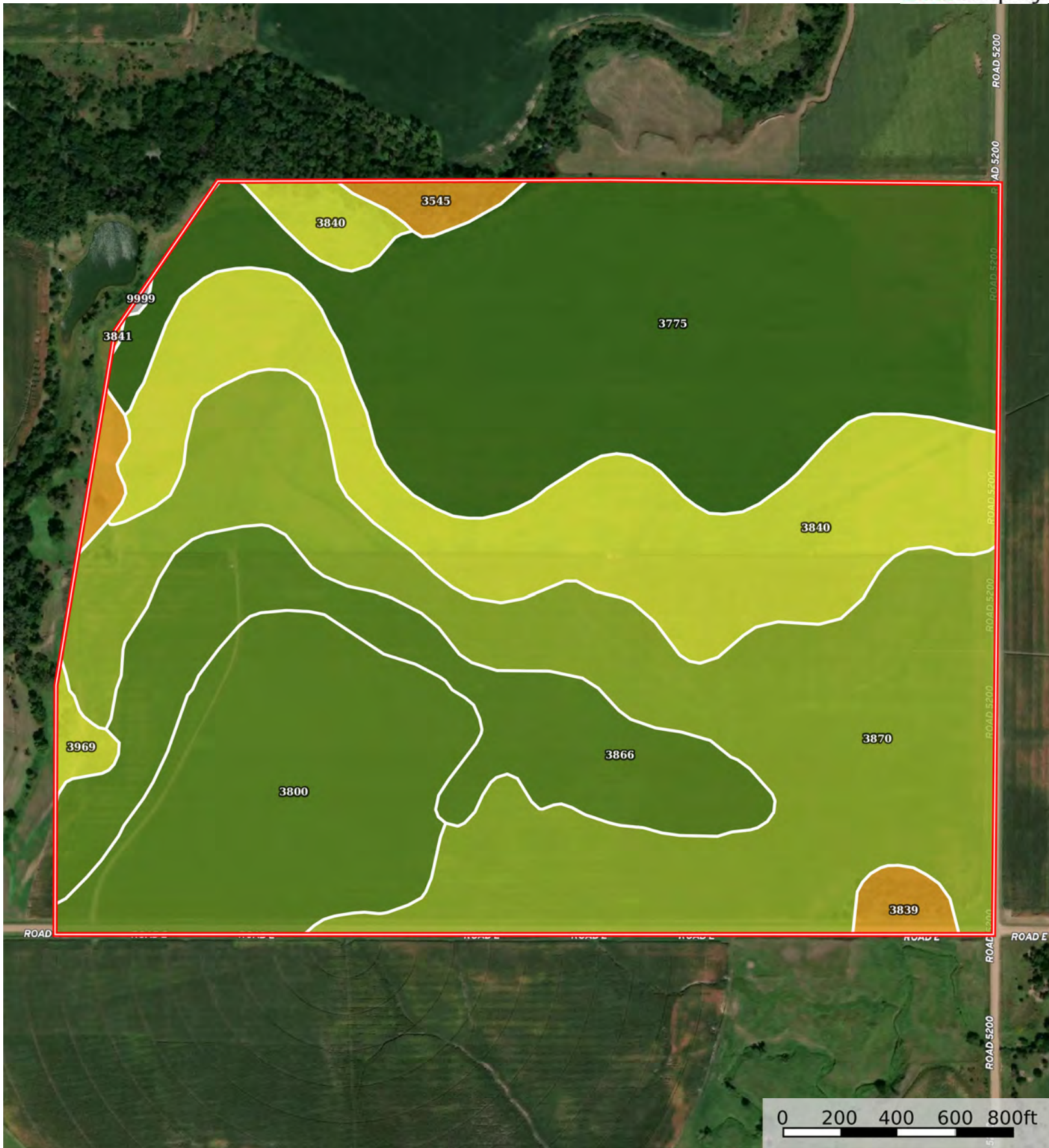
The information contained herein was obtained from sources deemed to be reliable. Land id™ Services makes no warranties or guarantees as to the completeness or accuracy thereof.



Boundary

L-2400510

Thayer County, Nebraska, 191.46 AC +/-



Boundary



The information contained herein was obtained from sources deemed to be reliable. Land id™ Services makes no warranties or guarantees as to the completeness or accuracy thereof.

| Boundary 191.25 ac

SOIL CODE	SOIL DESCRIPTION	ACRES	%	CPI	NCCPI	CAP
3775	Muir silt loam, rarely flooded	54.37	28.43	0	87	1
3870	Hastings silty clay loam, 3 to 7 percent slopes, eroded	53.45	27.95	0	58	3e
3840	Geary silty clay loam, 7 to 11 percent slopes, eroded	32.53	17.01	0	62	4e
3800	Crete silt loam, 0 to 1 percent slopes, loess plains and breaks	24.89	13.01	0	65	2s
3866	Hastings silt loam, 1 to 3 percent slopes	20.25	10.59	0	68	2e
3545	Hobbs silt loam, channeled, frequently flooded	1.7	0.89	0	39	6w
3839	Geary silty clay loam, 11 to 30 percent slopes	1.64	0.86	0	52	6e
3969	Hastings soils, eroded	1.17	0.61	0	58	4e
3841	Geary silty clay loam, 11 to 30 percent slopes, severely eroded	1.16	0.61	0	51	6e
9999	Water	0.09	0.05	0	-	-
TOTALS		191.25(*)	100%	-	68.6	2.44









(*) Total acres may differ in the second decimal compared to the sum of each acreage soil. This is due to a round error because we only show the acres of each soil with two decimal.

Capability Legend

Increased Limitations and Hazards

Decreased Adaptability and Freedom of Choice Users

Land, Capability

								
	1	2	3	4	5	6	7	8
'Wild Life'	•	•	•	•	•	•	•	•
Forestry	•	•	•	•	•	•	•	
Limited	•	•	•	•	•	•	•	
Moderate	•	•	•	•	•	•		
Intense	•	•	•	•	•			
Limited	•	•	•	•				
Moderate	•	•	•					
Intense	•	•						
Very Intense	•							

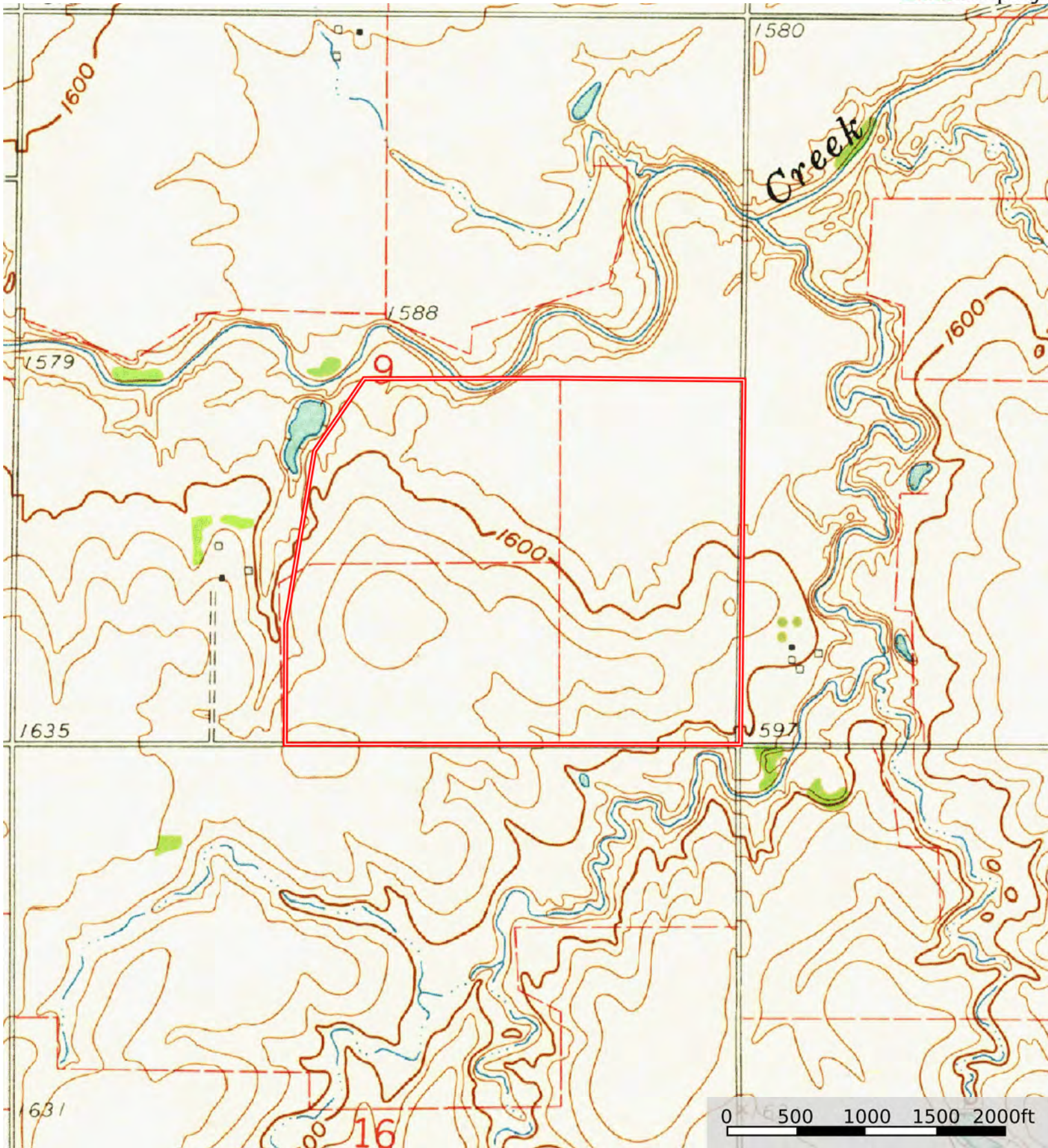
Grazing Cultivation

(c) climatic limitations (e) susceptibility to erosion

(s) soil limitations within the rooting zone (w) excess of water

L-2400510

Thayer County, Nebraska, 191.46 AC +/-



Boundary



The information contained herein was obtained from sources deemed to be reliable. Land id™ Services makes no warranties or guarantees as to the completeness or accuracy thereof.