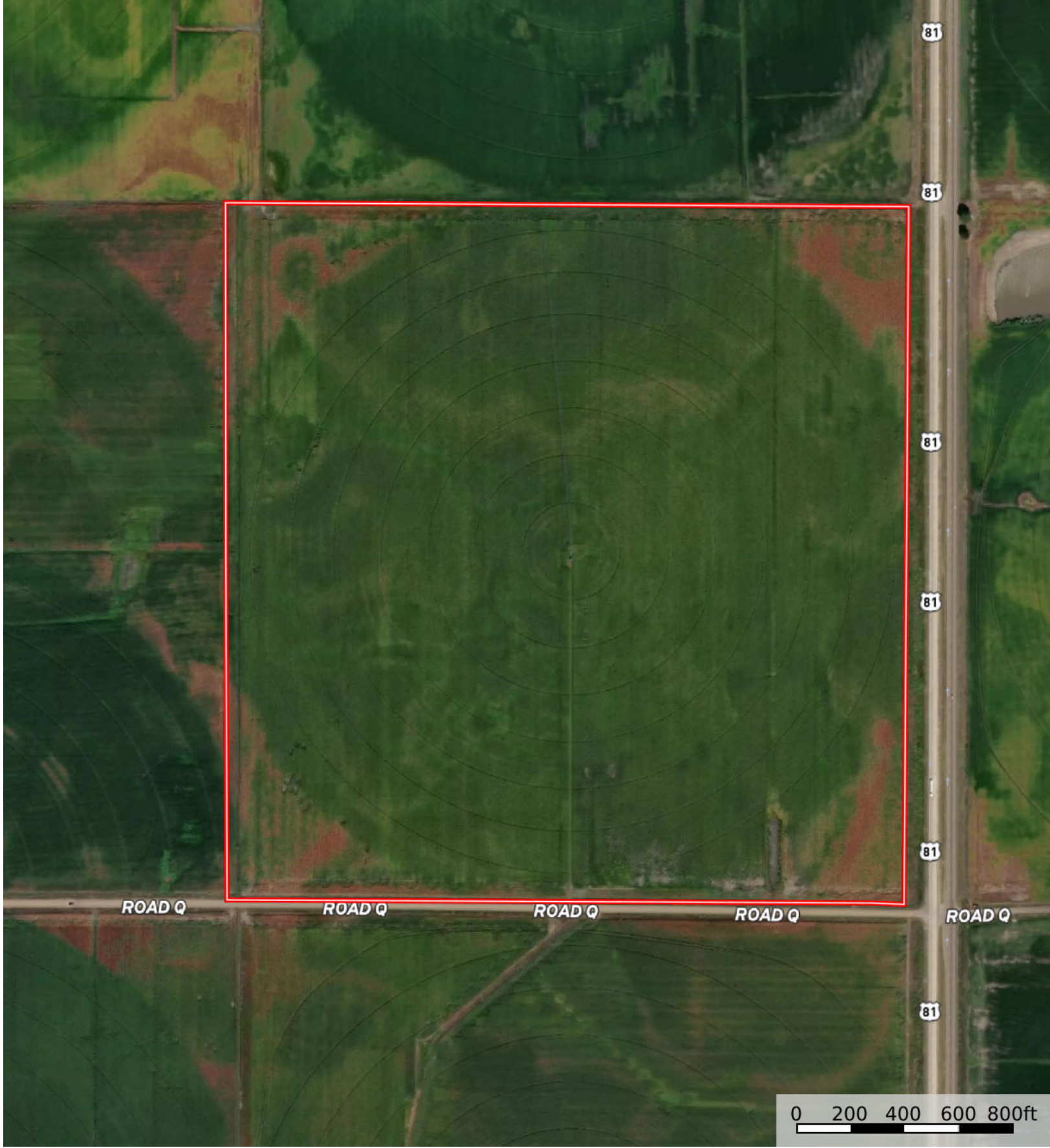

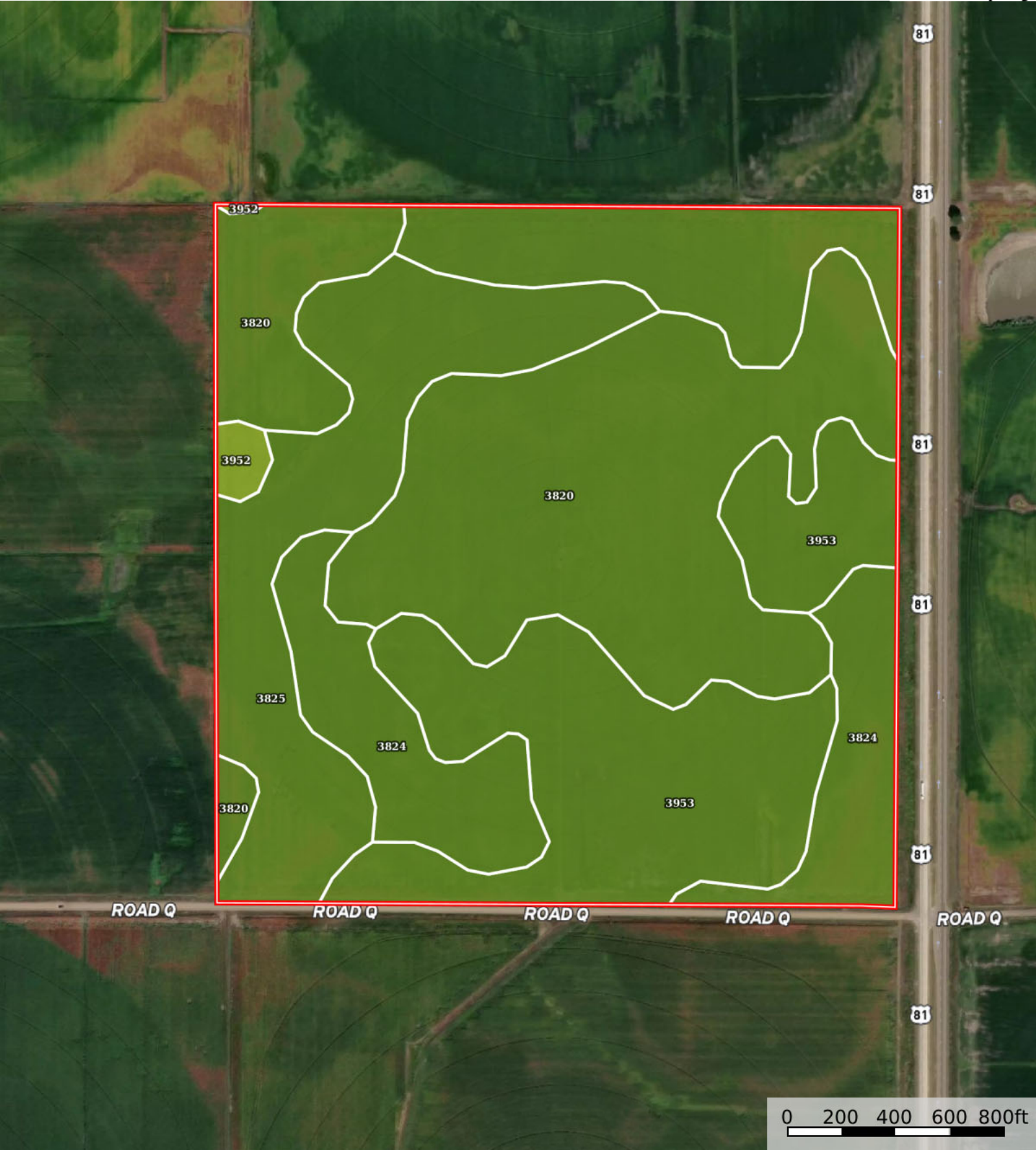
 Boundary



 Boundary



|  Boundary 149.79 ac

SOIL CODE	SOIL DESCRIPTION	ACRES	%	CPI	NCCPI	CAP
3820	Butler silt loam, 0 to 1 percent slopes	53.39	35.65	0	70	2w
3953	Fillmore silt loam, drained, 0 to 1 percent slopes	34.89	23.3	0	66	2w
3824	Crete silt loam, 0 to 1 percent slopes	34.2	22.84	0	63	2s
3825	Crete silt loam, 1 to 3 percent slopes	26.05	17.39	0	63	2e
3952	Fillmore silt loam, frequently ponded	1.26	0.84	0	45	3w
TOTALS		149.79(*)	100%	-	66.05	2.01









(*) Total acres may differ in the second decimal compared to the sum of each acreage soil. This is due to a round error because we only show the acres of each soil with two decimal.

Capability Legend

Increased Limitations and Hazards

Decreased Adaptability and Freedom of Choice Users

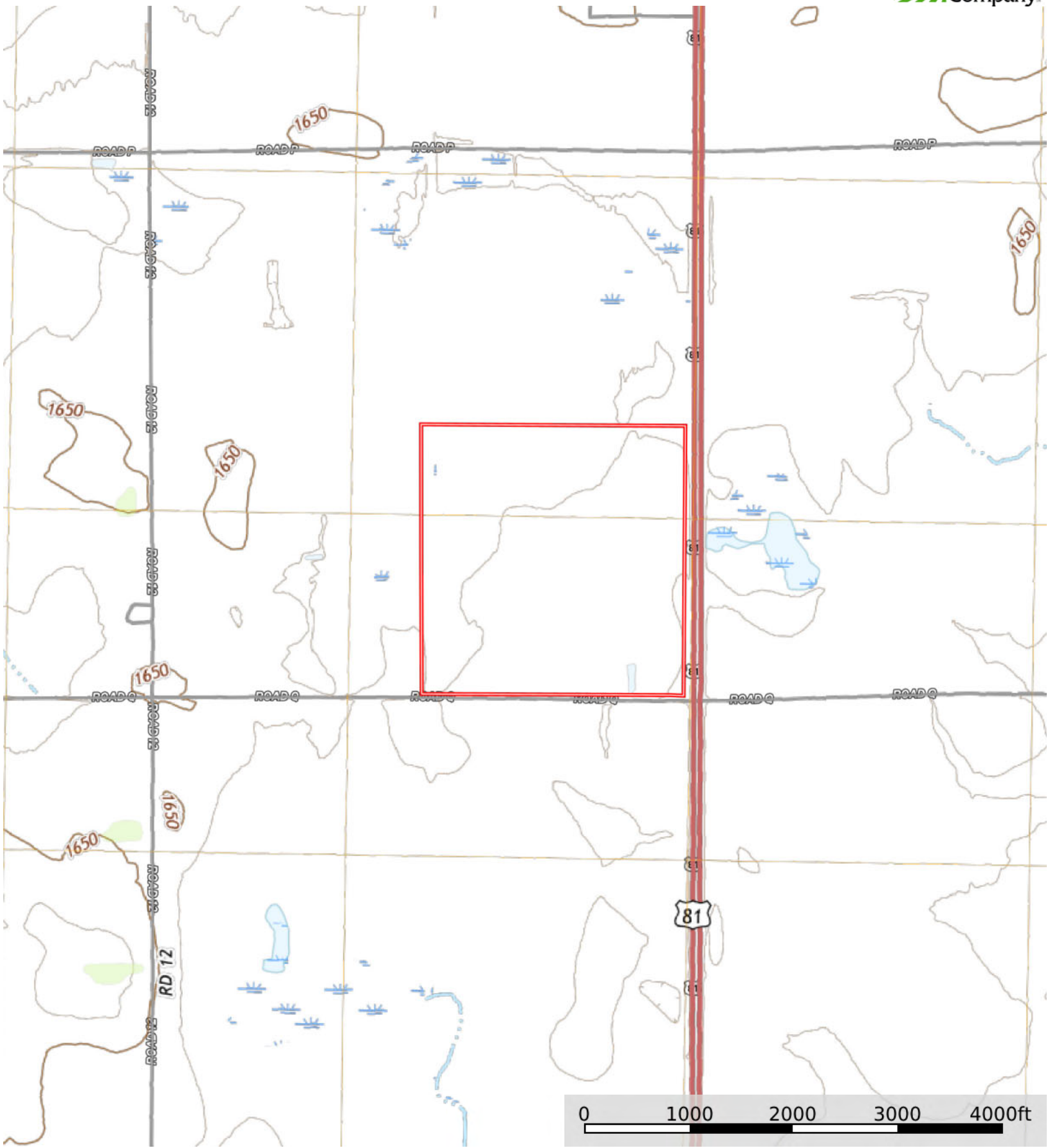
Land, Capability


								
	1	2	3	4	5	6	7	8
'Wild Life'	•	•	•	•	•	•	•	•
Forestry	•	•	•	•	•	•	•	
Limited	•	•	•	•	•	•	•	
Moderate	•	•	•	•	•	•		
Intense	•	•	•	•	•			
Limited	•	•	•	•				
Moderate	•	•	•					
Intense	•	•						
Very Intense	•							

Grazing Cultivation

(c) climatic limitations (e) susceptibility to erosion

(s) soil limitations within the rooting zone (w) excess of water



 Boundary