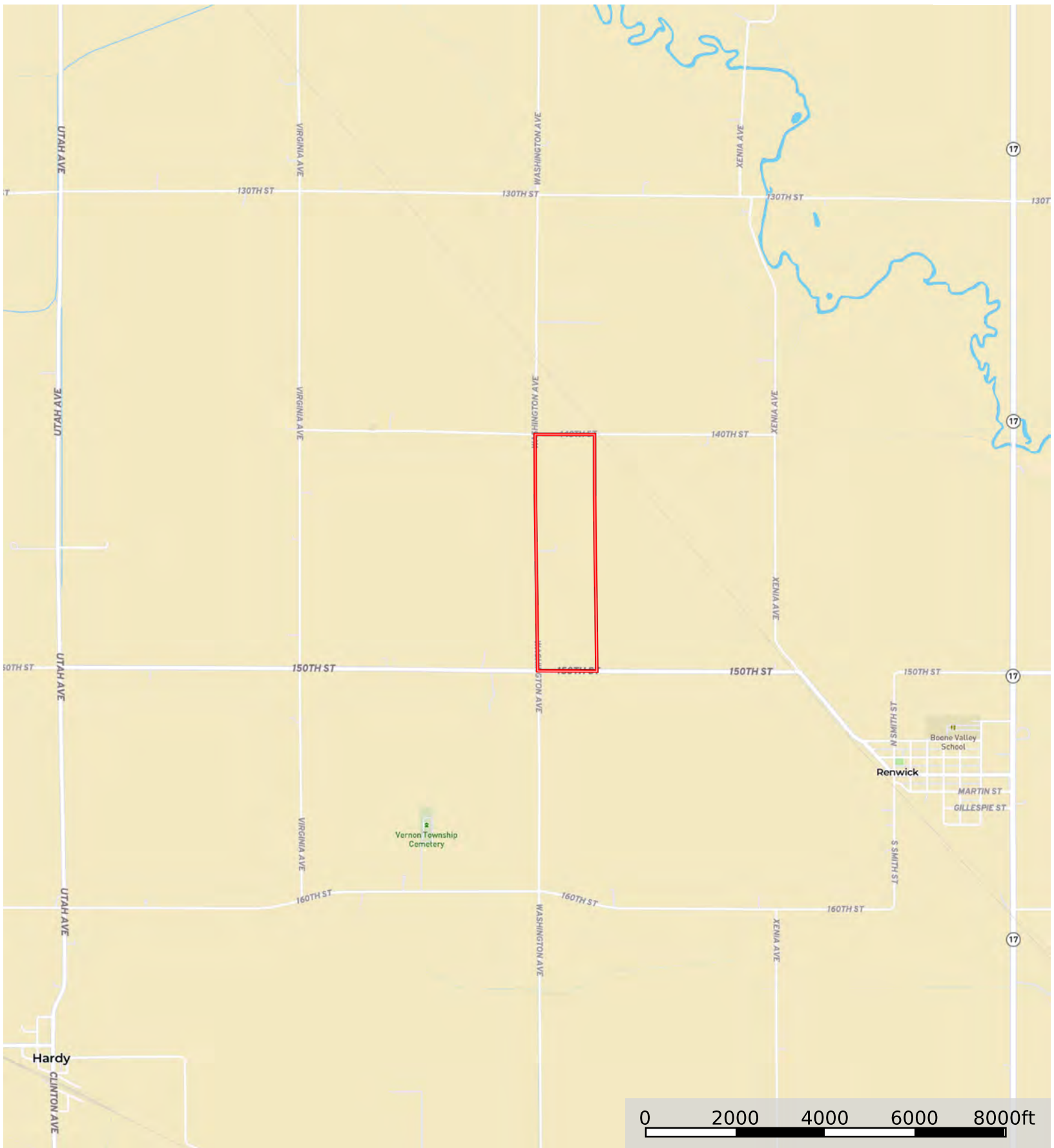


A-31573
Humboldt County, Iowa, 160 AC +/-



 Boundary

A-31573
Humboldt County, Iowa, 160 AC +/-



 Boundary

A-31573
Humboldt County, Iowa, 160 AC +/-



 Boundary

Boundary 159.23 ac

SOIL CODE	SOIL DESCRIPTION	ACRES	%	CSR2	CPI	NCCPI	CAP
507	Canisteo clay loam, 0 to 2 percent slopes	81.86	51.42	84.0	0	82	2w
55	Nicollet clay loam, 1 to 3 percent slopes	20.08	12.61	89.0	0	81	1
138B	Clarion loam, 2 to 6 percent slopes	16.23	10.19	89.0	0	83	2e
6	Okoboji silty clay loam, 0 to 1 percent slopes	15.72	9.87	59.0	0	76	3w
95	Harps clay loam, 0 to 2 percent slopes	11.91	7.48	72.0	0	82	2w
638C2	Clarion-Storden complex, 6 to 10 percent slopes, moderately eroded	9.36	5.88	75.0	0	68	3e
828C2	Zenor sandy loam, 5 to 9 percent slopes, moderately eroded	4.07	2.56	50.0	0	46	3e
TOTALS		159.23(*)	100%	80.39	-	79.65	2.06

(*) Total acres may differ in the second decimal compared to the sum of each acreage soil. This is due to a round error because we only show the acres of each soil with two decimal.

