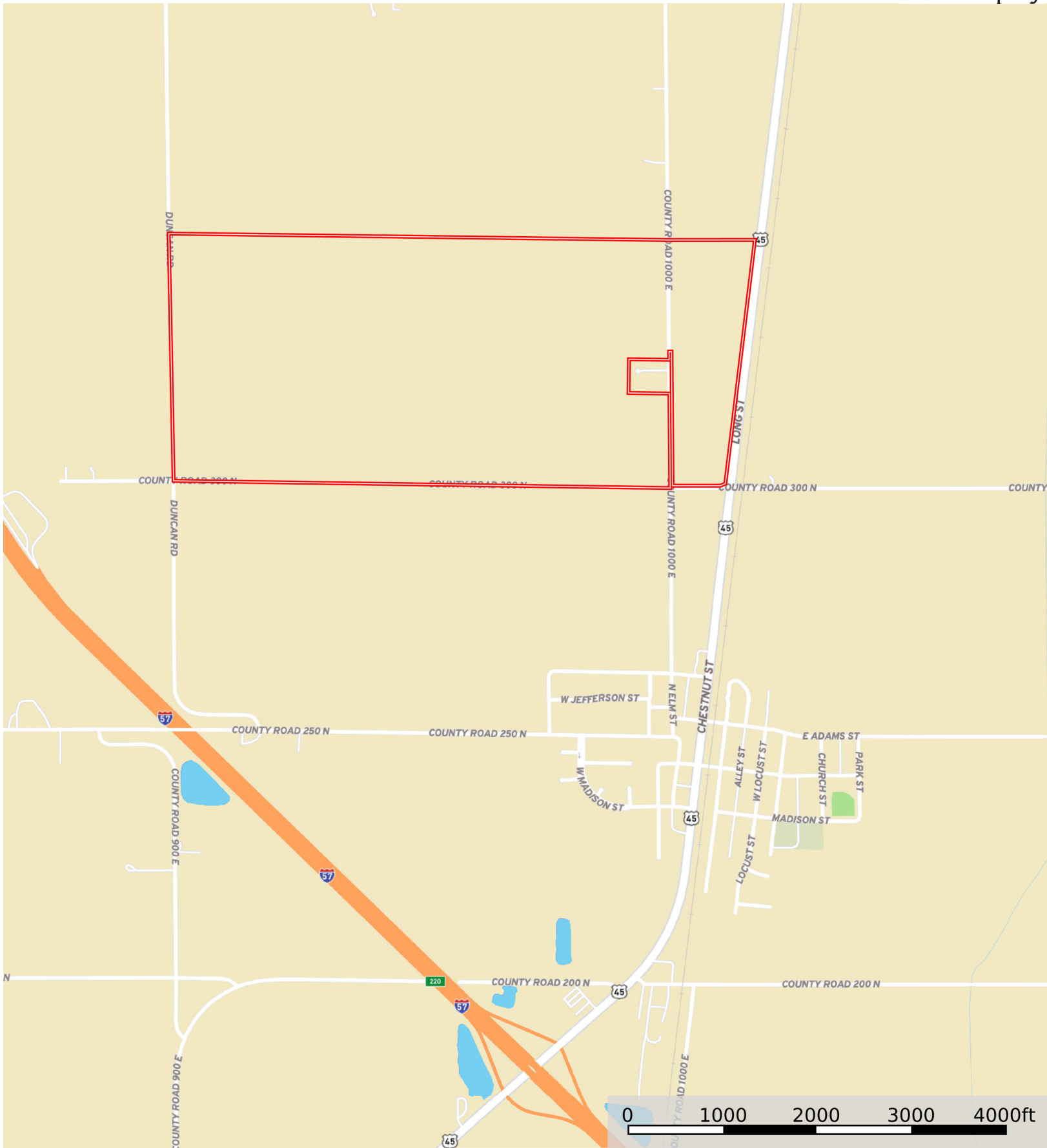


L-2400496

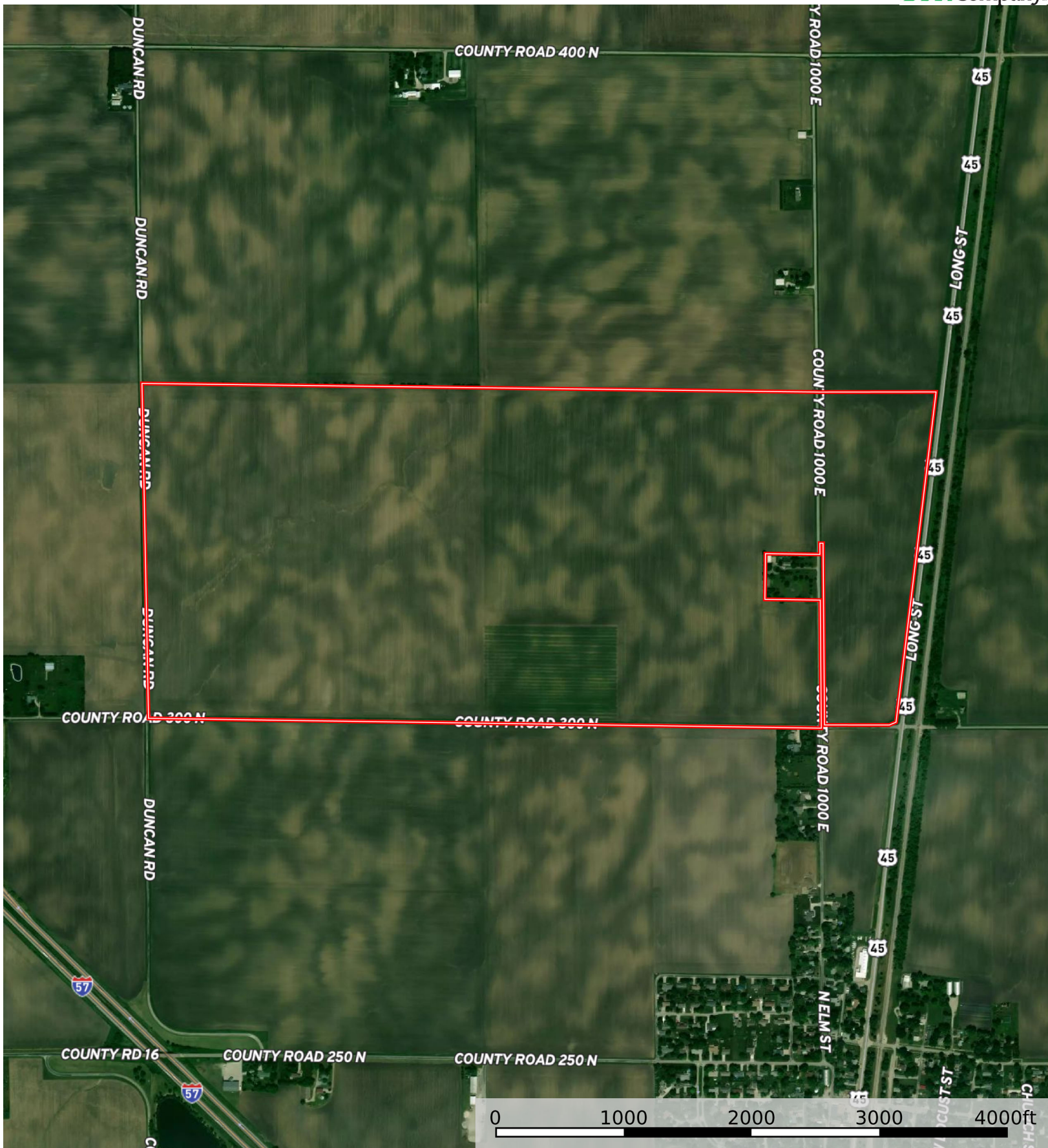
Champaign County, Illinois, 362.6 AC +/-



Boundary

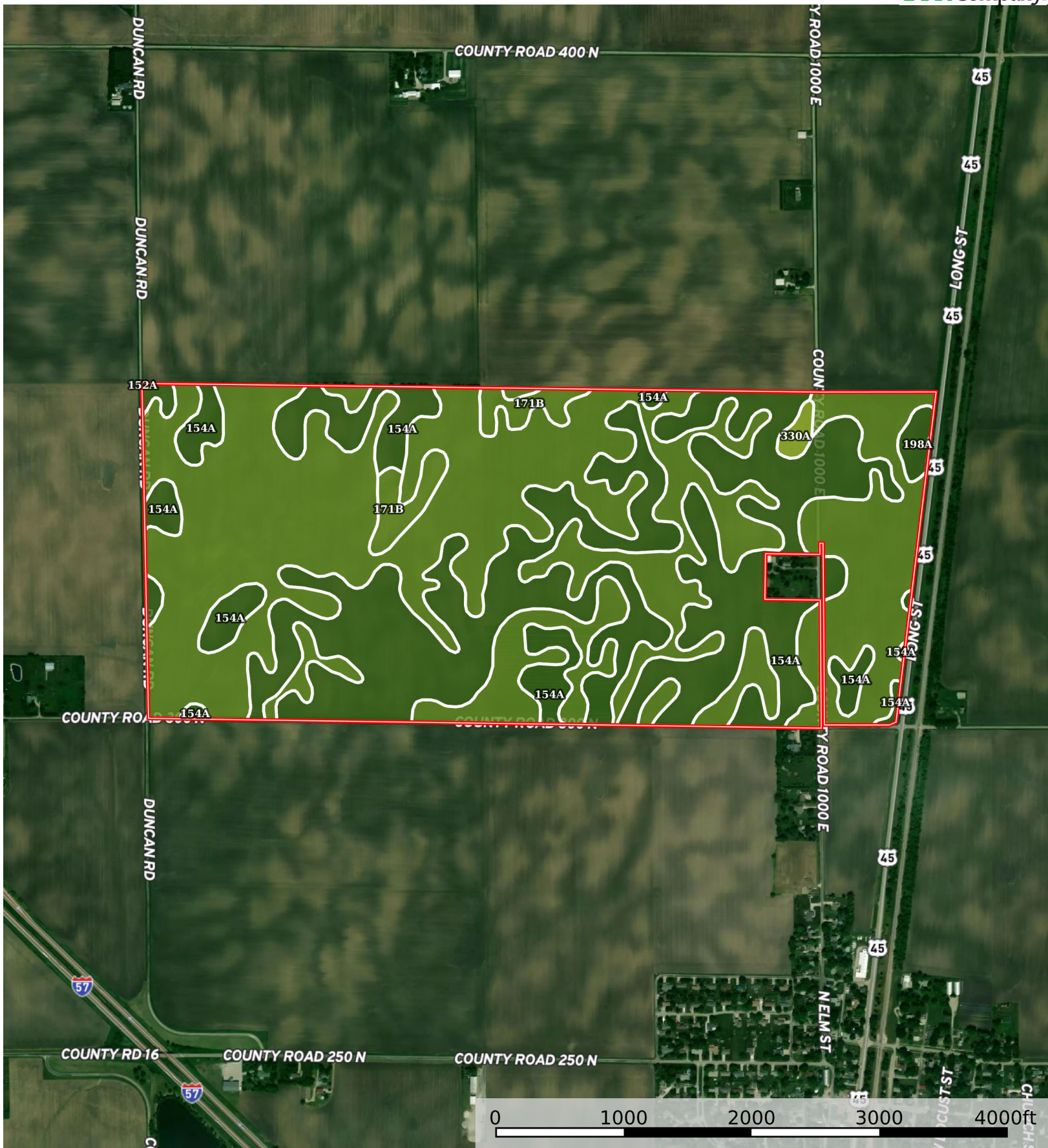


The information contained herein was obtained from sources deemed to be reliable. Land id™ Services makes no warranties or guarantees as to the completeness or accuracy thereof.



Boundary





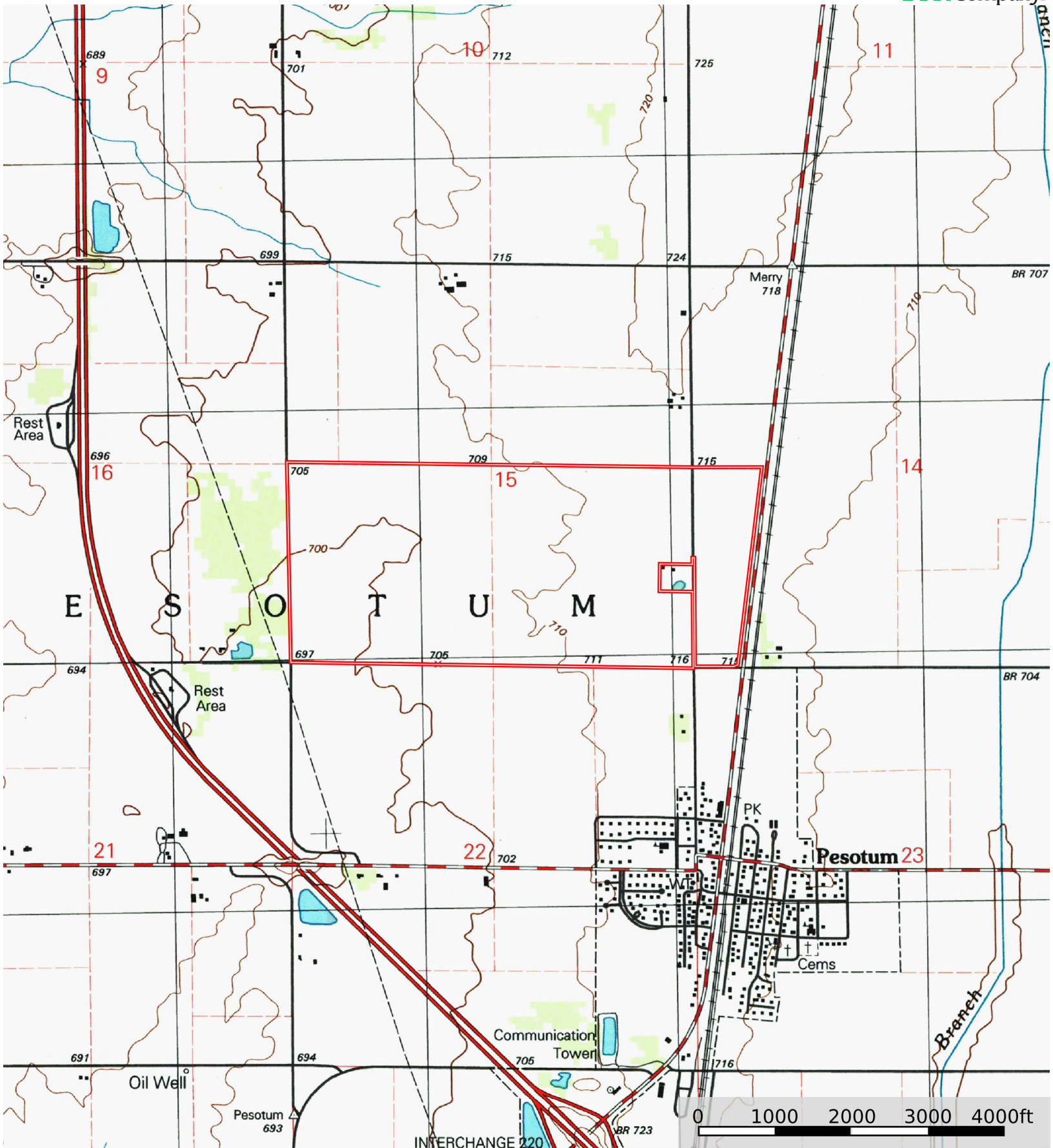
Boundary

| Boundary 360.54 ac

SOIL CODE	SOIL DESCRIPTION	ACRES	%	PI	NCCPI	CAP
152A	Drummer silty clay loam, 0 to 2 percent slopes	200.84	55.71	144	83	2w
154A	Flanagan silt loam, 0 to 2 percent slopes	146.5	40.63	144	90	1
171B	Catlin silt loam, 2 to 5 percent slopes	8.84	2.45	137	77	2e
198A	Elburn silt loam, 0 to 2 percent slopes	2.6	0.72	143	91	1
330A	Peotone silty clay loam, 0 to 2 percent slopes	1.76	0.49	123	63	3w
TOTALS		360.54(*)	100%	143.72	85.66	1.59

(*) Total acres may differ in the second decimal compared to the sum of each acreage soil. This is due to a round error because we only show the acres of each soil with two decimal.





Boundary

