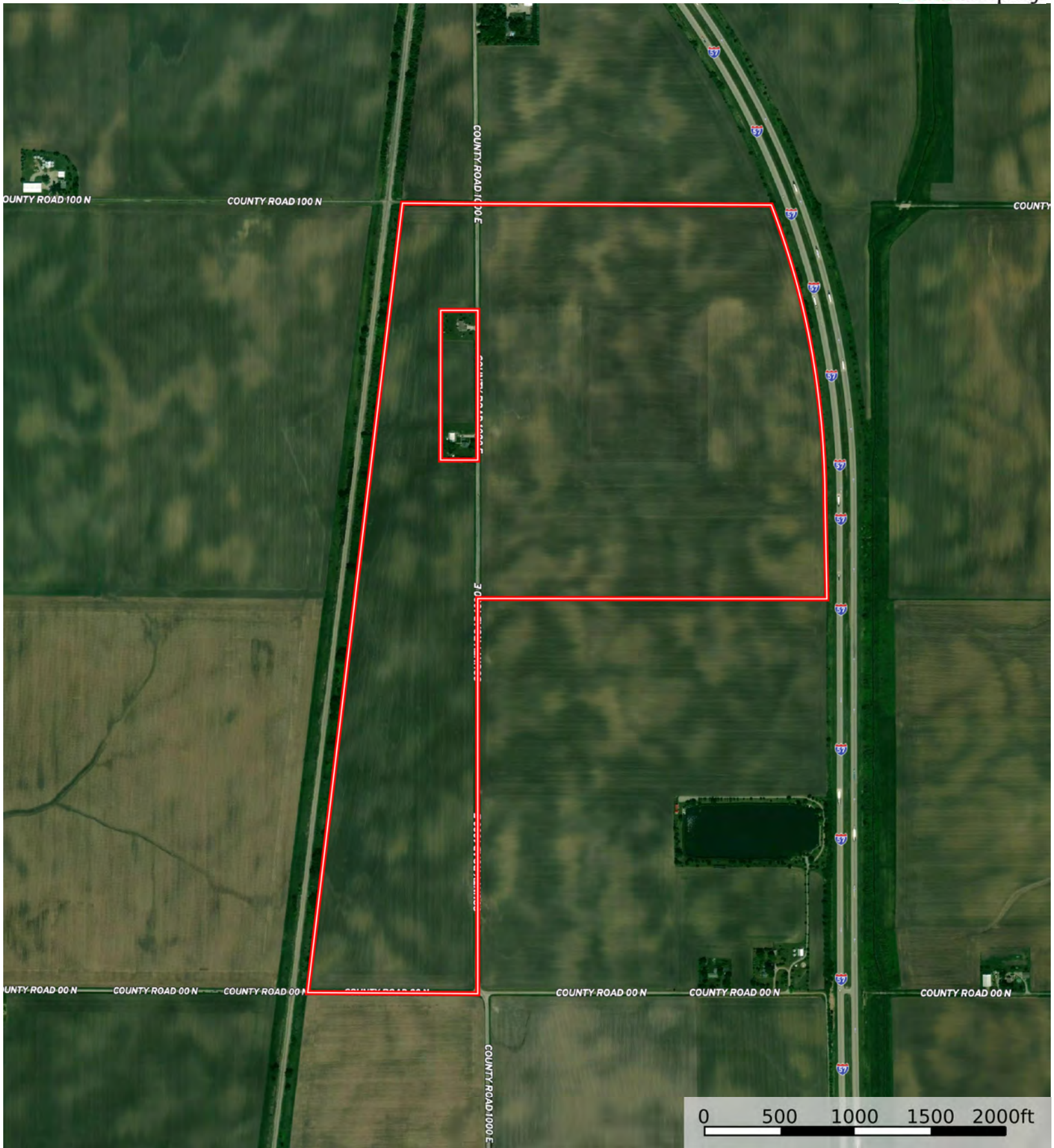


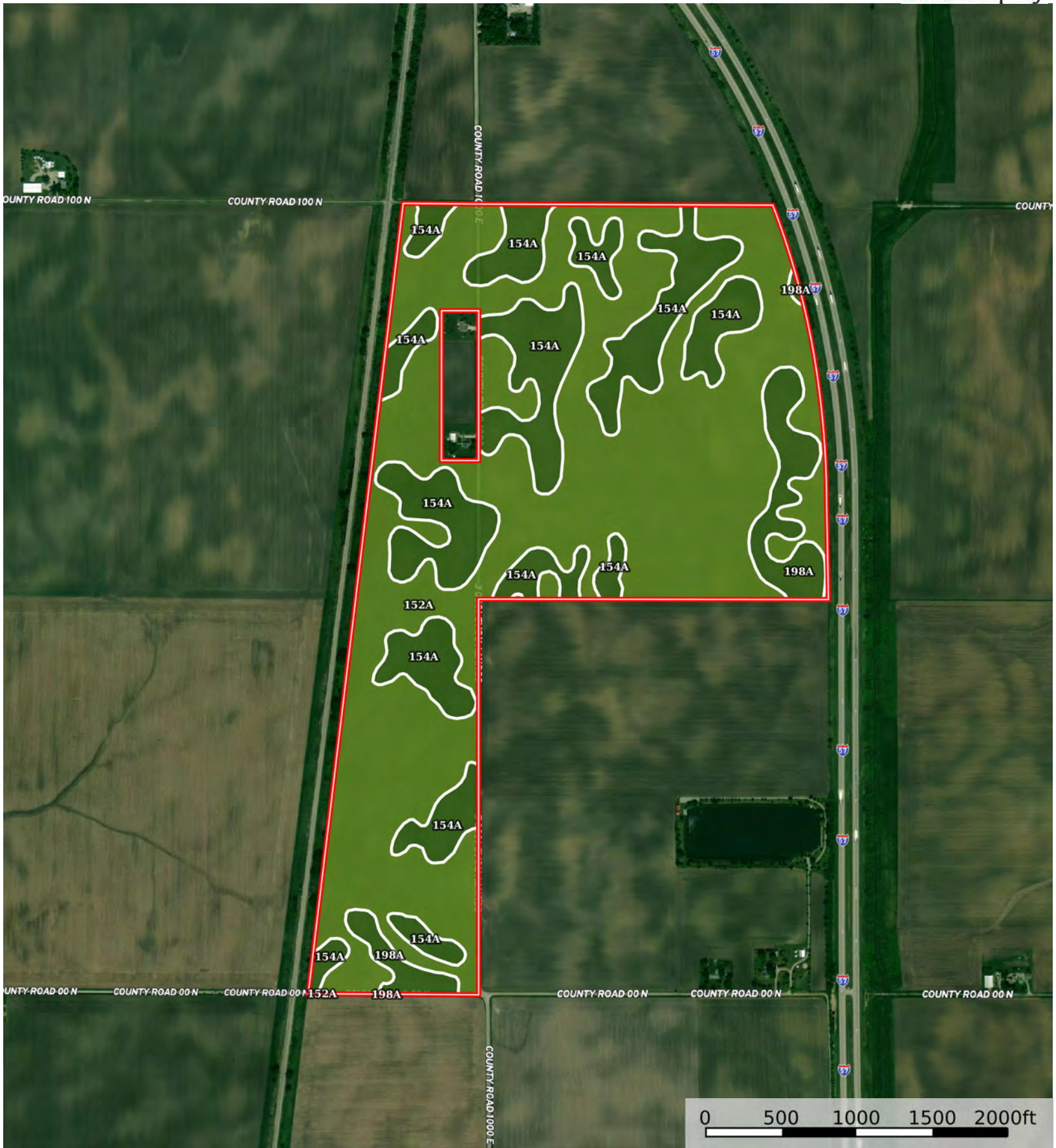
Boundary





Boundary





Boundary



| Boundary 227.8 ac

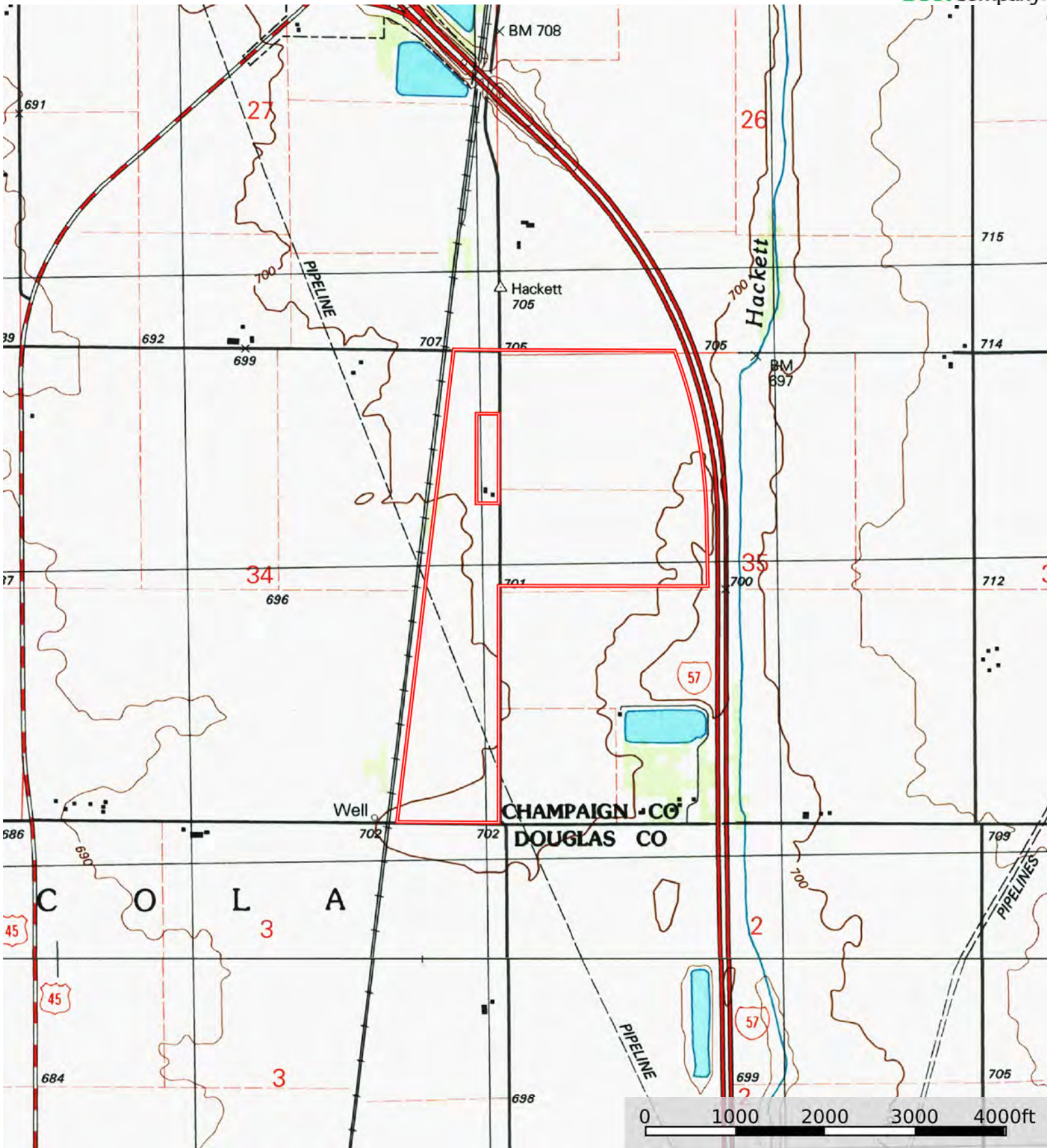
SOIL CODE	SOIL DESCRIPTION	ACRES	%	PI	NCCPI	CAP
152A	Drummer silty clay loam, 0 to 2 percent slopes	154.03	67.62	144	83	2w
154A	Flanagan silt loam, 0 to 2 percent slopes	61.16	26.85	144	90	1
198A	Elburn silt loam, 0 to 2 percent slopes	12.61	5.54	143	91	1
TOTALS		227.8(*)	100%	143.95	85.33	1.68

(*) Total acres may differ in the second decimal compared to the sum of each acreage soil. This is due to a round error because we only show the acres of each soil with two decimal.



L-2400497

Champaign County, Illinois, 224.58 AC +/-



Boundary



The information contained herein was obtained from sources deemed to be reliable. Land id™ Services makes no warranties or guarantees as to the completeness or accuracy thereof.