

22725  
Roger and Linda Lippelmann  
Cheyenne, KS

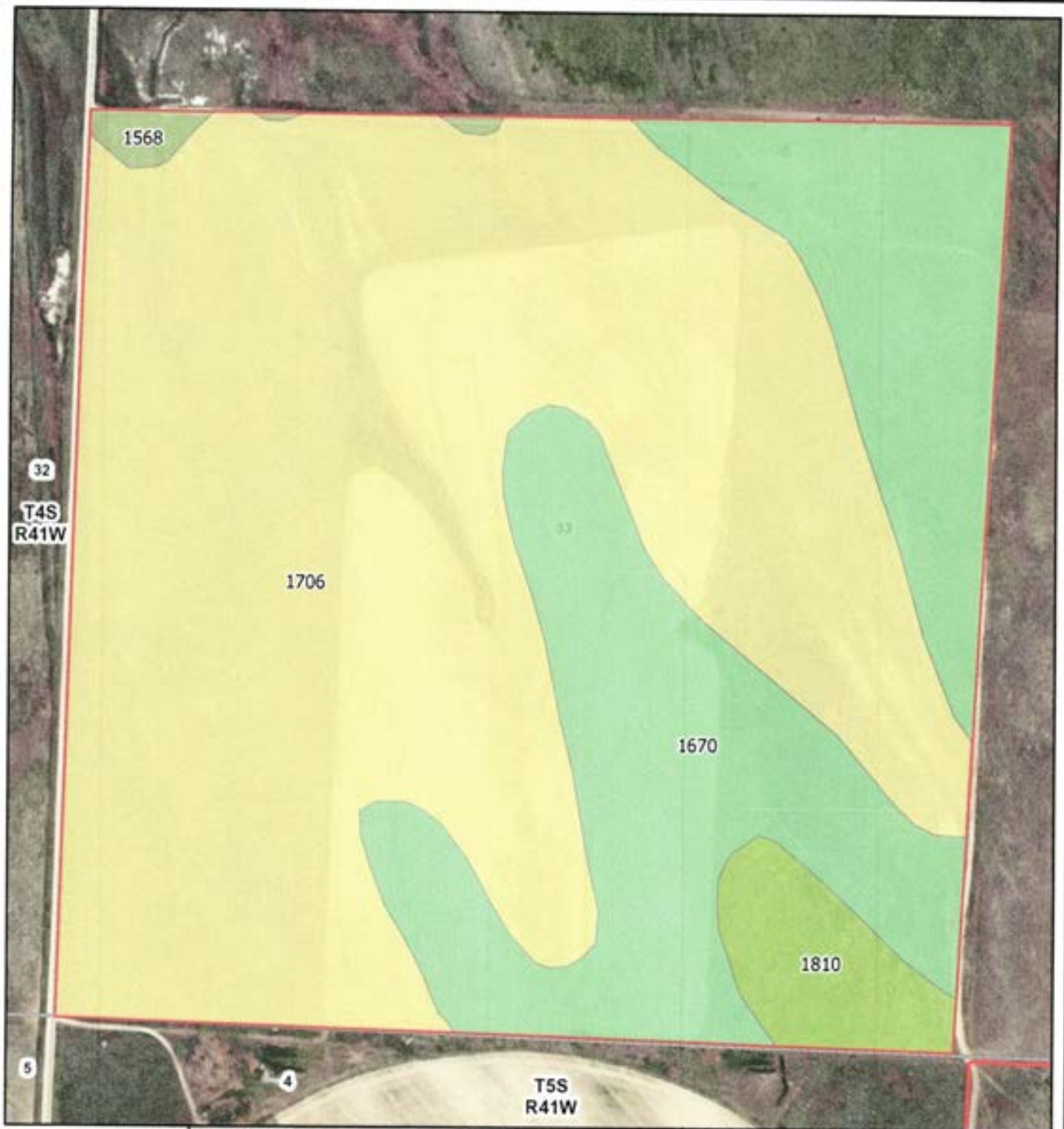
Latitude: 39.6516°N  
Longitude: 101.928°W  
Imagery Source: USDA NAIP  
Soil Data Source: USDA NRCS  
Boundaries are Approximate



22725  
Roger and Linda Lippelmann  
Cheyenne, KS

Latitude: 39.6589°N  
Longitude: 101.933°W  
Imagery Source: USDA NAIP  
Soil Data Source: USDA NRCS  
Boundaries are Approximate





Map Symbol	Name	Non-IRR LCC	ACRES
1670	Manter fine sandy loam, 3 to 5 percent slopes	Ive	45.25
1706	Otero fine sandy loam, 7 to 15 percent slopes	VIe	102.61
1568	Canyon-Kim loams, 5 to 30 percent slopes	VIIs	1.11
1810	Satanta loam, 0 to 1 percent slopes	IIe	5.79
TOTAL			154.76



22725  
 Roger and Linda Lippelmann  
 Cheyenne, KS

Latitude: 39.6589°N  
 Longitude: 101.933°W  
 Imagery Source: USDA NAIP  
 Soil Data Source: USDA NRCS  
 Boundaries are Approximate

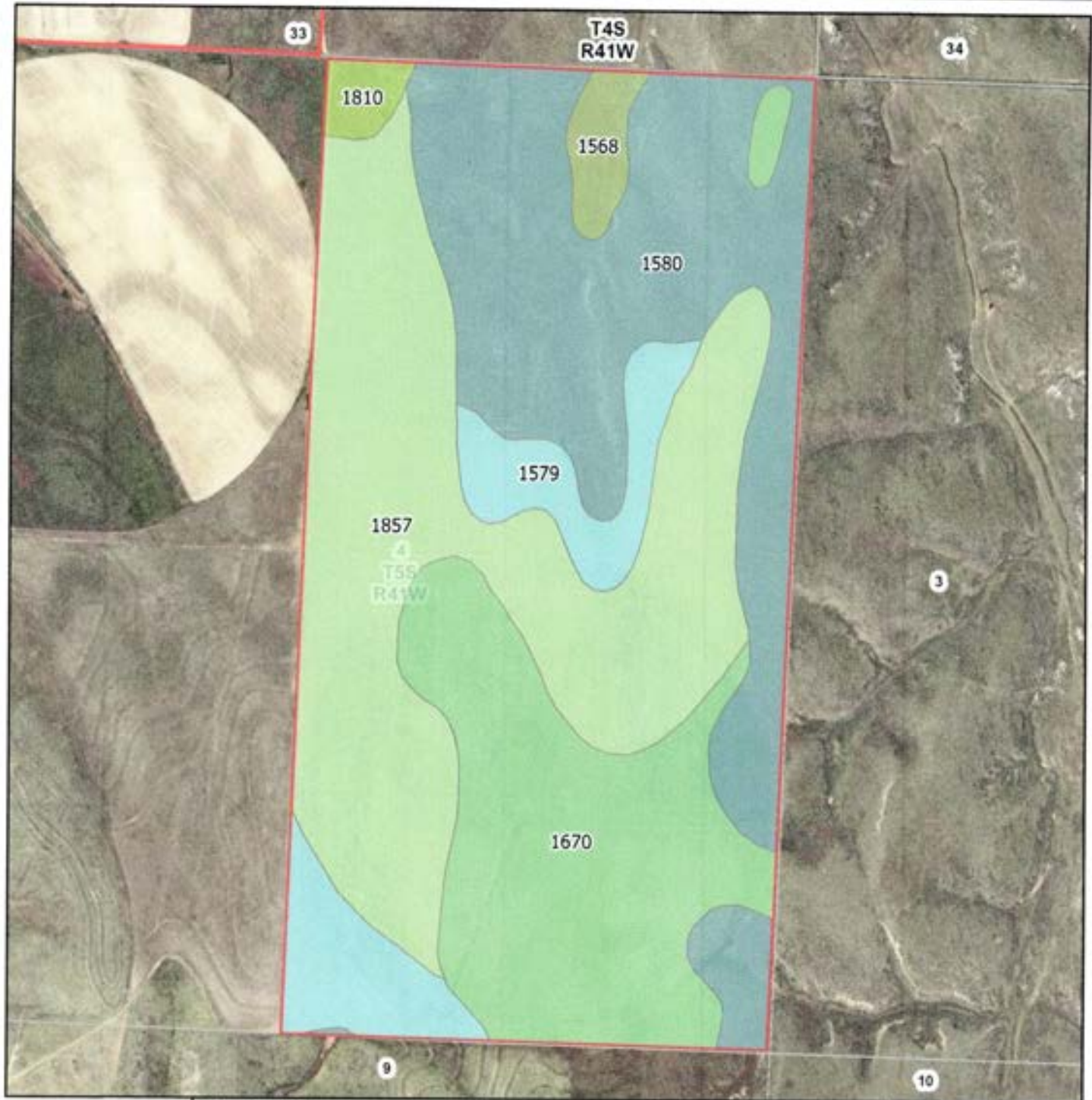




22725  
Roger and Linda Lippelmann  
Cheyenne, KS

Latitude: 39.648°N  
Longitude: 101.9237°W  
Imagery Source: USDA NAIP  
Soil Data Source: USDA NRCS  
Boundaries are Approximate





Map Symbol	Name	Non-IRR LCC	ACRES
1580	Colby silt loam, 6 to 15 percent slopes	VIe	95.71
1670	Manter fine sandy loam, 3 to 5 percent slopes	IVe	72.22
1857	Ulysses silt loam, 1 to 3 percent slopes	IIIe	111.27
1568	Canyon-Kim loams, 5 to 30 percent slopes	VI s	5.88
1579	Colby silt loam, 3 to 6 percent slopes	IVe	28.55
1810	Satanta loam, 0 to 1 percent slopes	IIe	3.74
TOTAL			317.37

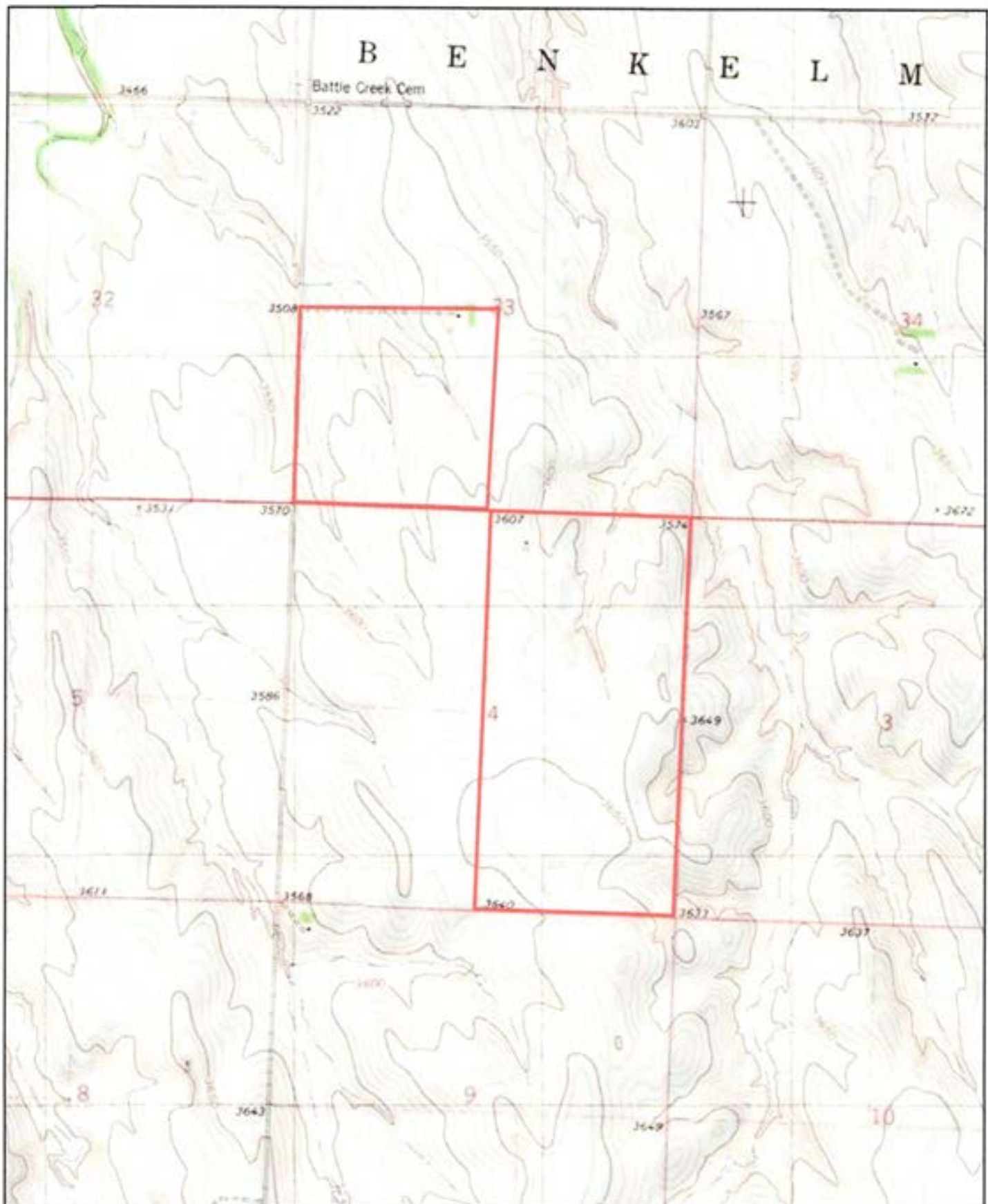


22725  
Roger and Linda Lippelmann  
Cheyenne, KS

Latitude: 39.648°N  
Longitude: 101.9237°W  
Imagery Source: USDA NAIP  
Soil Data Source: USDA NRCS  
Boundaries are Approximate

B E N K E L M

Battle Creek Cem



22725  
 Roger and Linda Lippelmann  
 Cheyenne, KS

Latitude: 39.6516°N  
 Longitude: 101.928°W  
 Imagery Source: USDA NAIP  
 Soil Data Source: USDA NRCS  
 Boundaries are Approximate