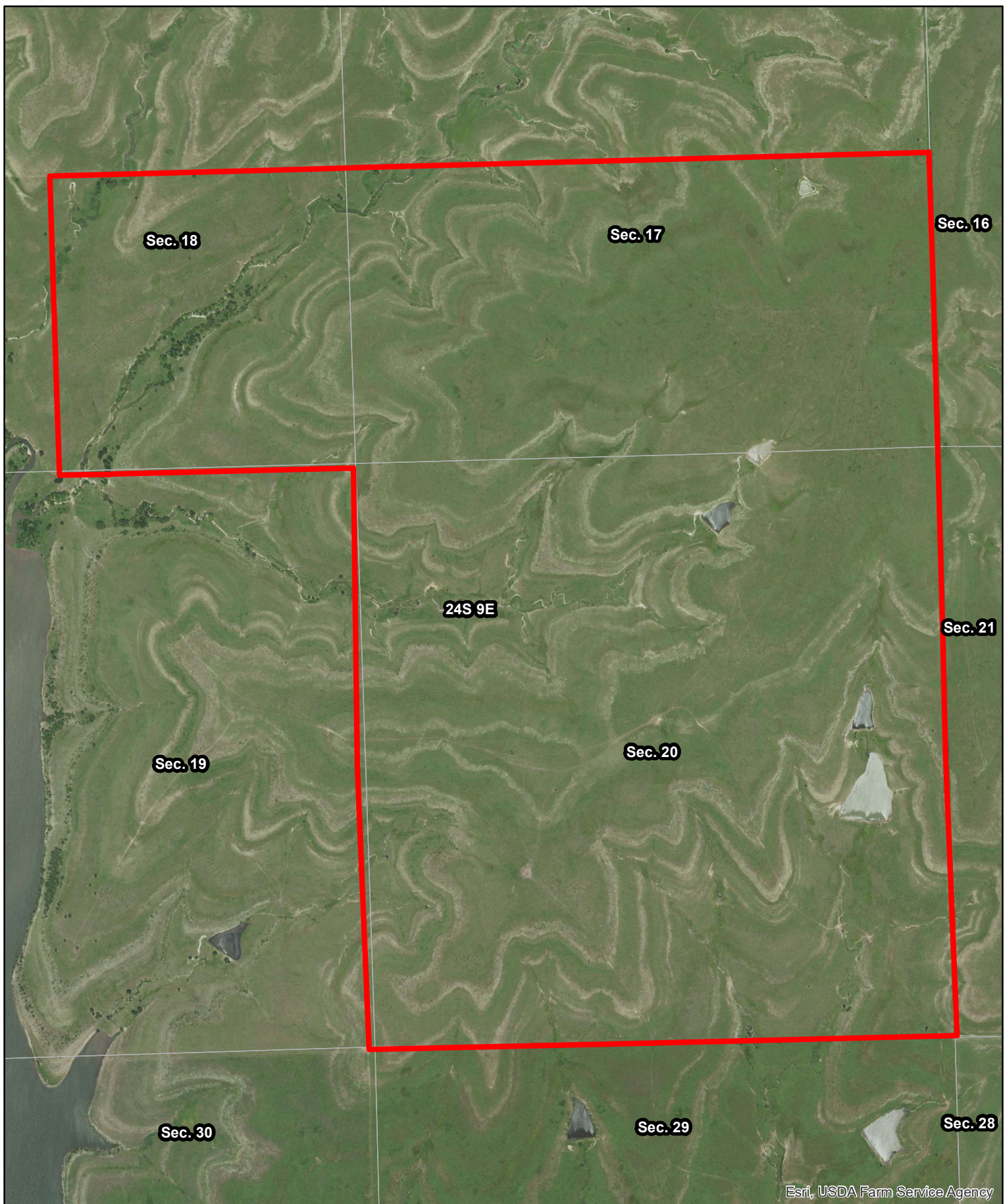


**Farm #22317**  
**McCarley**  
**Greenwood County, Kansas**

Latitude: 37.8889°N  
 Longitude: -96.3695°W  
 Imagery Source: USDA NAIP  
 Soil Data Source: USDA NRCS  
 Boundaries Are Approximate

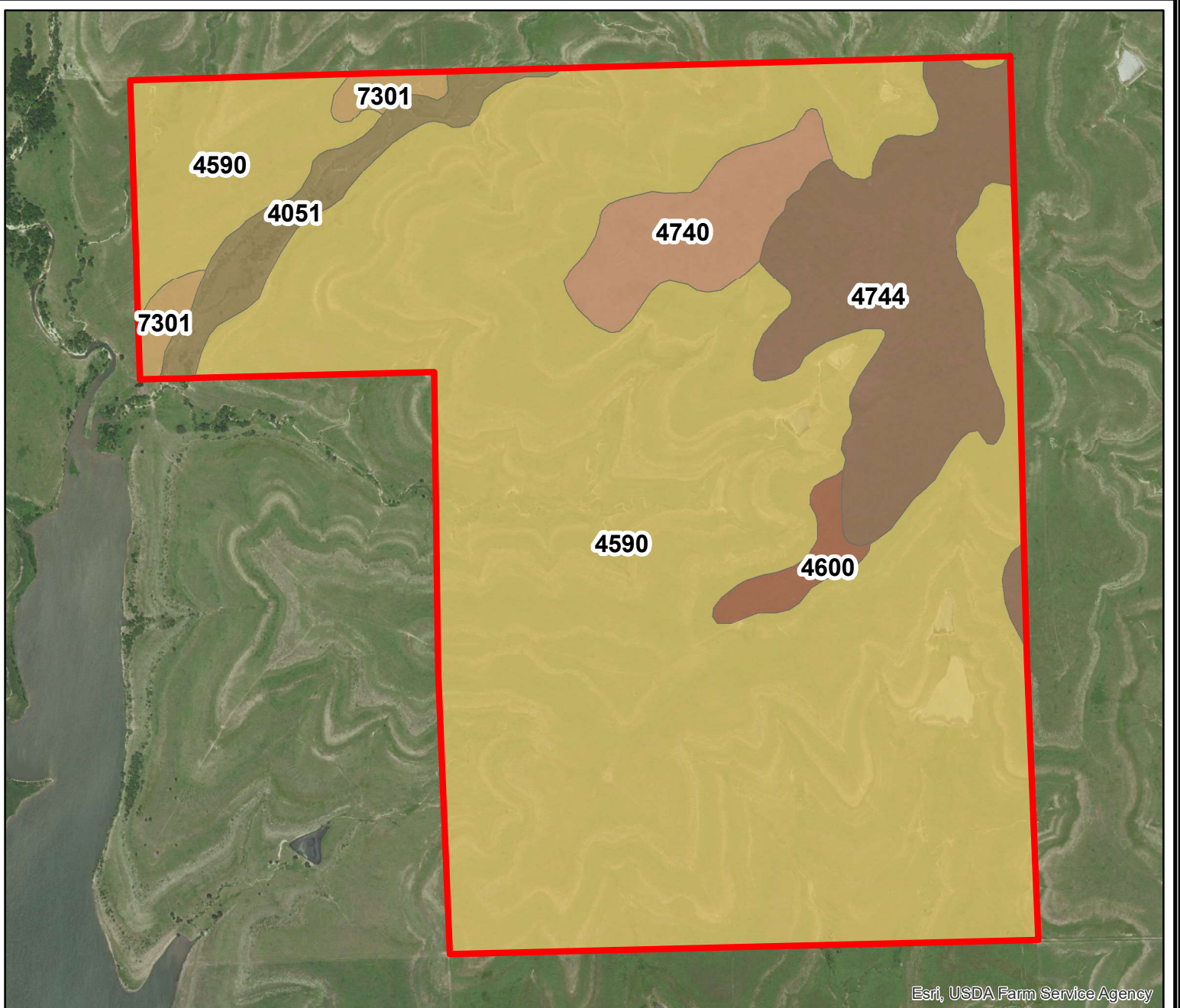


Esri, USDA Farm Service Agency



**Farm #22317**  
**McCarley**  
**Greenwood County, Kansas**

Latitude: 37.9522°N  
Longitude: -96.4486°W  
Imagery Source: USDA NAIP  
Soil Data Source: USDA NRCS  
Boundaries Are Approximate



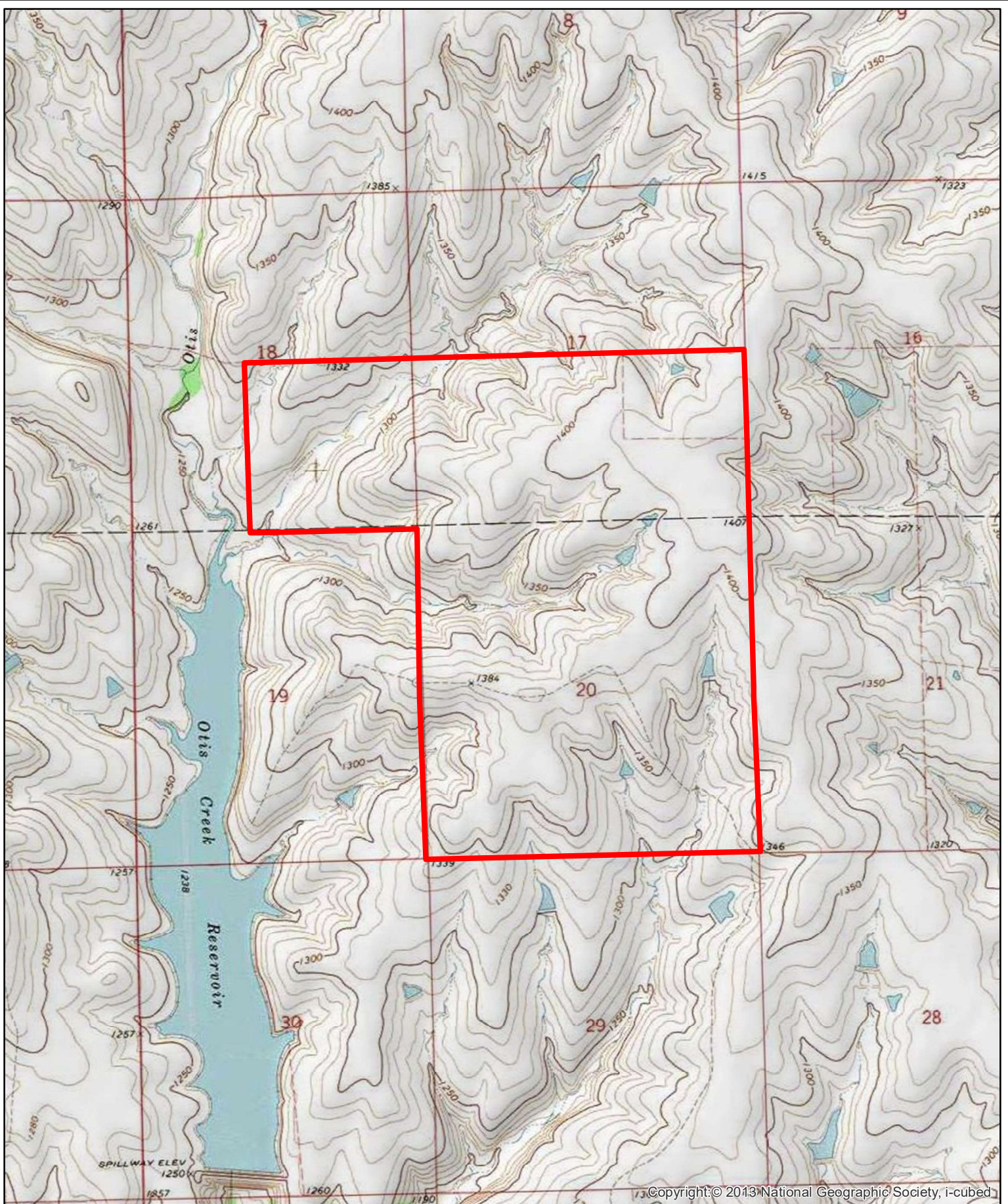
Esri, USDA Farm Service Agency

MAP SYMBOL	NAME	NON IRR LCC	ACRES
4590	Clime-Sogn complex, 3 to 20 percent slopes	Vle	896.6
4744	Labette-Dwight complex, 0 to 3 percent slopes	Ile	128.0
4740	Labette silty clay loam, 1 to 3 percent slopes	Ile	46.4
4051	Ivan silt loam, channeled	Vw	33.0
7301	Martin silty clay loam, 1 to 3 percent slopes	Ile	13.4
4600	Dwight silt loam, 0 to 1 percent slopes	IVs	13.1
<b>TOTAL</b>			<b>1130.4</b>



**Farm #22317**  
**McCarley**  
**Greenwood County, Kansas**

Latitude: 37.9522°N  
 Longitude: -96.4486°W  
 Imagery Source: USDA NAIP  
 Soil Data Source: USDA NRCS  
 Boundaries Are Approximate



**Farm #22317**  
**McCarley**  
**Greenwood County, Kansas**

Latitude: 37.9522°N  
Longitude: -96.4486°W  
Imagery Source: USDA NAIP  
Soil Data Source: USDA NRCS  
Boundaries Are Approximate