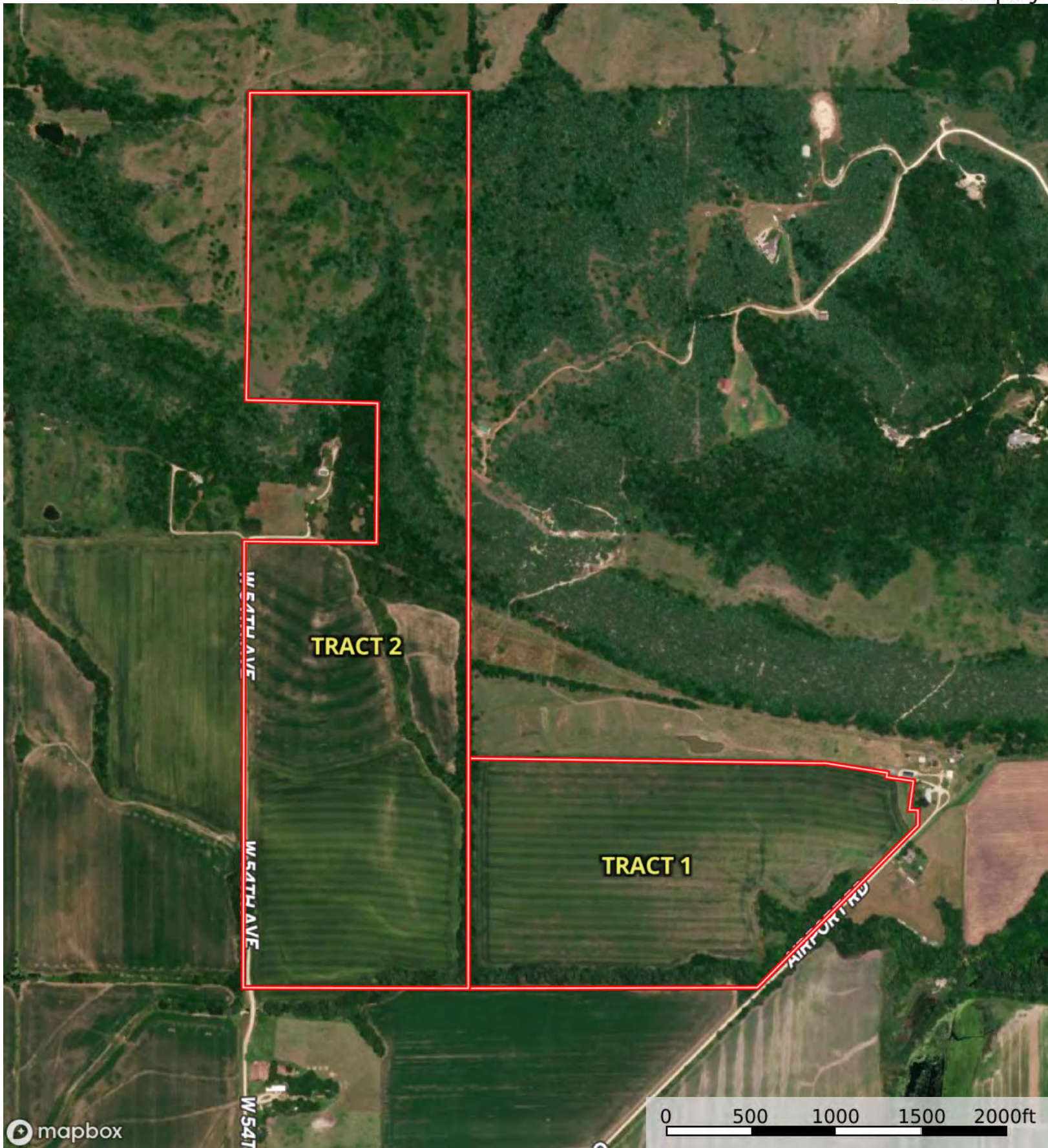


L-2500127

Riley County, Kansas, 215.15 AC +/-



Boundary



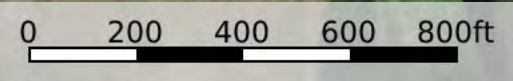
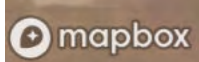
mapbox

Boundary



mapbox

Boundary



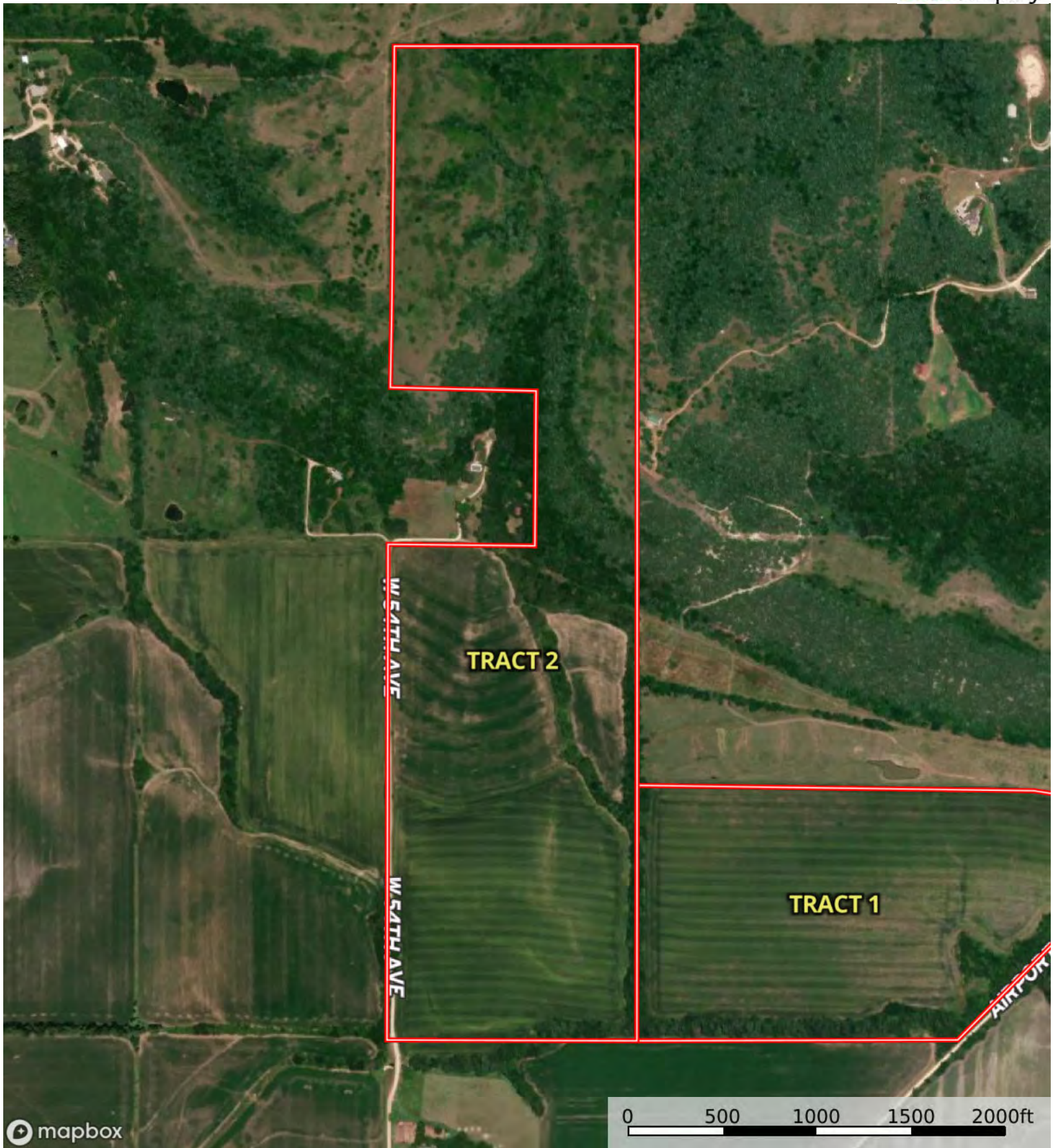
Boundary

| Boundary 70.21 ac

SOIL CODE	SOIL DESCRIPTION	ACRES	%	CPI	NCCPI	CAP
4018	Chase silty clay loam, very rarely flooded	49.69	70.76	0	71	2w
7174	Reading silt loam, 1 to 3 percent slopes	20.52	29.22	0	85	2e
TOTALS		70.21(*)	100%	-	75.08	2.0

(*) Total acres may differ in the second decimal compared to the sum of each acreage soil. This is due to a round error because we only show the acres of each soil with two decimal.

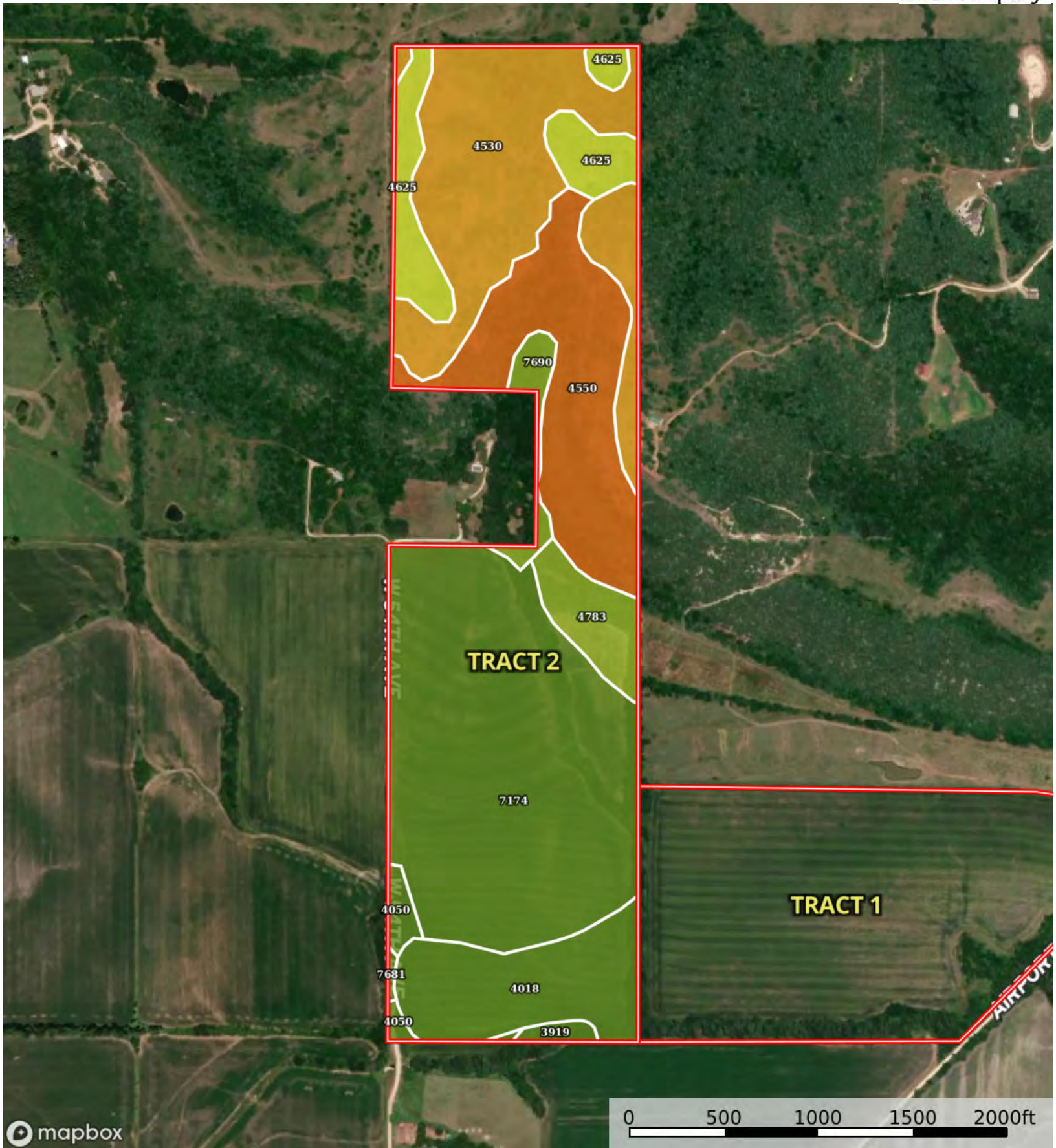




mapbox

0 500 1000 1500 2000ft

Boundary



| Boundary 144.78 ac

SOIL CODE	SOIL DESCRIPTION	ACRES	%	CPI	NCCPI	CAP
7174	Reading silt loam, 1 to 3 percent slopes	54.29	37.5	0	85	2e
4530	Benfield-Florence complex, 5 to 30 percent slopes	30.84	21.3	0	36	6e
4550	Clime silty clay loam, 20 to 40 percent slopes, very stony	23.49	16.22	0	8	7e
4018	Chase silty clay loam, very rarely flooded	15.01	10.37	0	71	2w
4625	Dwight-Irwin complex, 1 to 3 percent slopes	9.97	6.89	0	48	4s
4783	Tully silty clay loam, 3 to 7 percent slopes	5.63	3.89	0	62	3e
7690	Wymore-Kennebec complex, 0 to 17 percent slopes	2.48	1.71	0	77	3e
4050	Ivan and Kennebec silt loams, occasionally flooded	1.9	1.31	0	85	2w
3919	Smolan silt loam, 1 to 3 percent slopes	0.92	0.64	0	70	2e
7681	Wymore silty clay loam, 1 to 3 percent slopes	0.25	0.17	0	64	2e
TOTALS		144.78(*)	100%	-	56.91	3.86









(*) Total acres may differ in the second decimal compared to the sum of each acreage soil. This is due to a round error because we only show the acres of each soil with two decimal.

Capability Legend

Increased Limitations and Hazards

Decreased Adaptability and Freedom of Choice Users

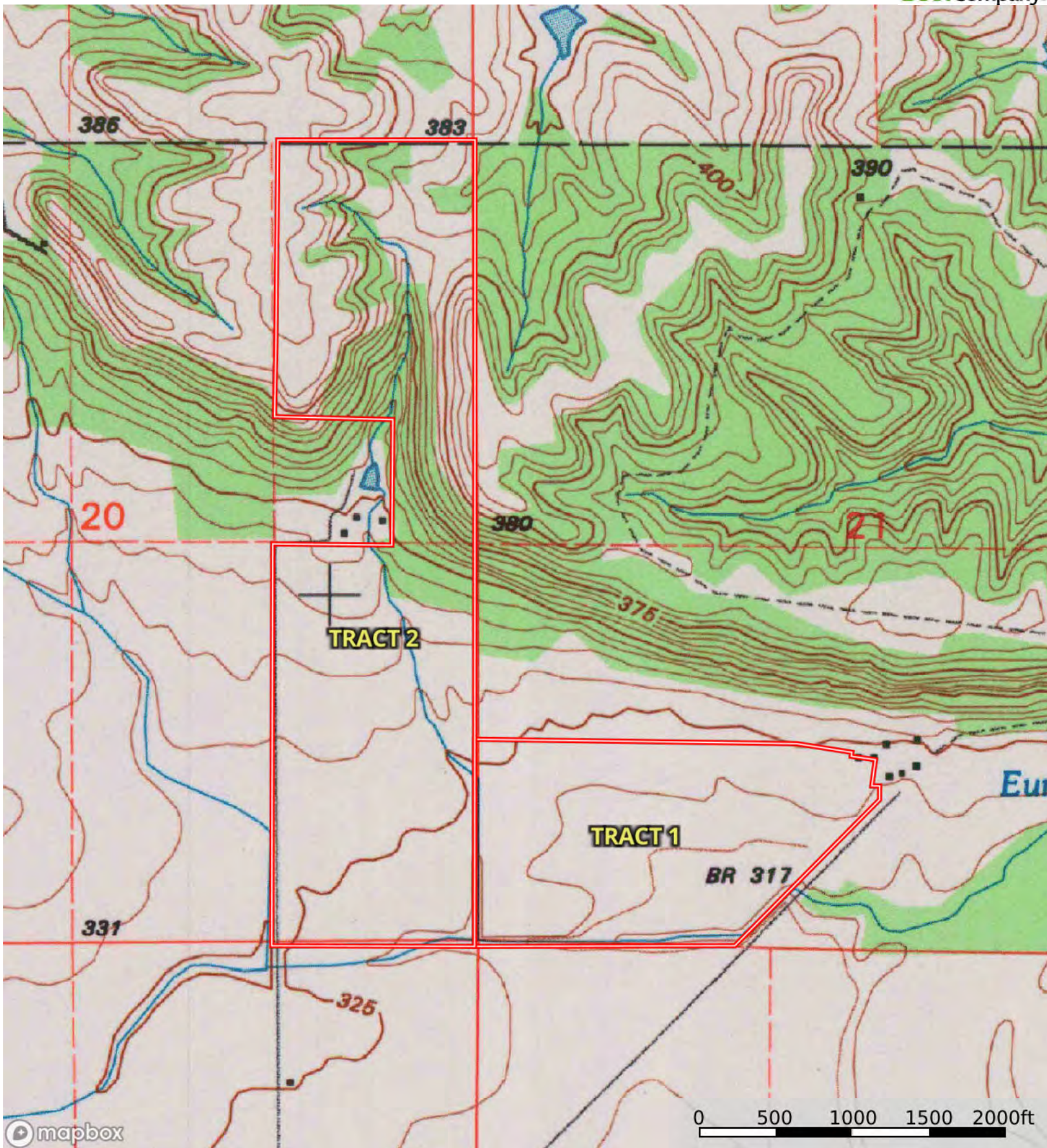
Land, Capability

								
	1	2	3	4	5	6	7	8
'Wild Life'	•	•	•	•	•	•	•	•
Forestry	•	•	•	•	•	•	•	
Limited	•	•	•	•	•	•	•	
Moderate	•	•	•	•	•	•		
Intense	•	•	•	•	•			
Limited	•	•	•	•				
Moderate	•	•	•					
Intense	•	•						
Very Intense	•							

Grazing Cultivation

(c) climatic limitations (e) susceptibility to erosion

(s) soil limitations within the rooting zone (w) excess of water



Boundary