

**Farm #22281**  
**Frazier**  
**Madison County, Iowa**

Latitude: 41.3302°N  
 Longitude: -94.0691°W  
 Imagery Source: USDA NAIP  
 Soil Data Source: USDA NRCS  
 Boundaries Are Approximate




**A-22281**  
**Madison Co., Iowa**

Latitude: 41.3194° N  
Longitude: 94.1214° W  
Imagery Source: USDA NAIP  
Soil Data Source: USDA NRCS  
Boundaries are Approximate





0 200 400 600 800ft

 Boundary

| Boundary 78.72 ac

SOIL CODE	SOIL DESCRIPTION	ACRES	%	CSR2	CPI	NCCPI	CAP
368B	Macksburg silty clay loam, 2 to 5 percent slopes	12.71	16.15	89.0	0	88	2e
76B	Ladoga silt loam, 2 to 5 percent slopes	12.21	15.51	86.0	0	83	2e
69C2	Clearfield silty clay loam, dissected till plain, 5 to 9 percent slopes, eroded	11.33	14.39	56.0	0	66	3w
822D2	Lamoni clay loam, 9 to 14 percent slopes, eroded	9.9	12.58	7.0	0	56	4e
368	Macksburg silty clay loam, 0 to 2 percent slopes	9.72	12.35	93.0	0	88	1
369	Winterset silty clay loam, 0 to 2 percent slopes	8.15	10.35	83.0	0	80	2w
370B	Sharpsburg silty clay loam, 2 to 5 percent slopes	7.5	9.53	91.0	0	91	2e
76C2	Ladoga silt loam, dissected till plain, 5 to 9 percent slopes, eroded	5.04	6.4	75.0	0	77	3e
69C	Clearfield silty clay loam, dissected till plain, 5 to 9 percent slopes	1.19	1.51	59.0	0	75	3w
24E2	Shelby clay loam, dissected till plain, 14 to 18 percent slopes, eroded	0.86	1.09	35.0	0	71	4e
76D2	Ladoga silt loam, 9 to 14 percent slopes, eroded	0.11	0.14	49.0	0	74	3e
TOTALS		78.72(*)	100%	71.55	-	78.4	2.37









(\*) Total acres may differ in the second decimal compared to the sum of each acreage soil. This is due to a round error because we only show the acres of each soil with two decimal.

## Capability Legend

Increased Limitations and Hazards

Decreased Adaptability and Freedom of Choice Users

Land, Capability

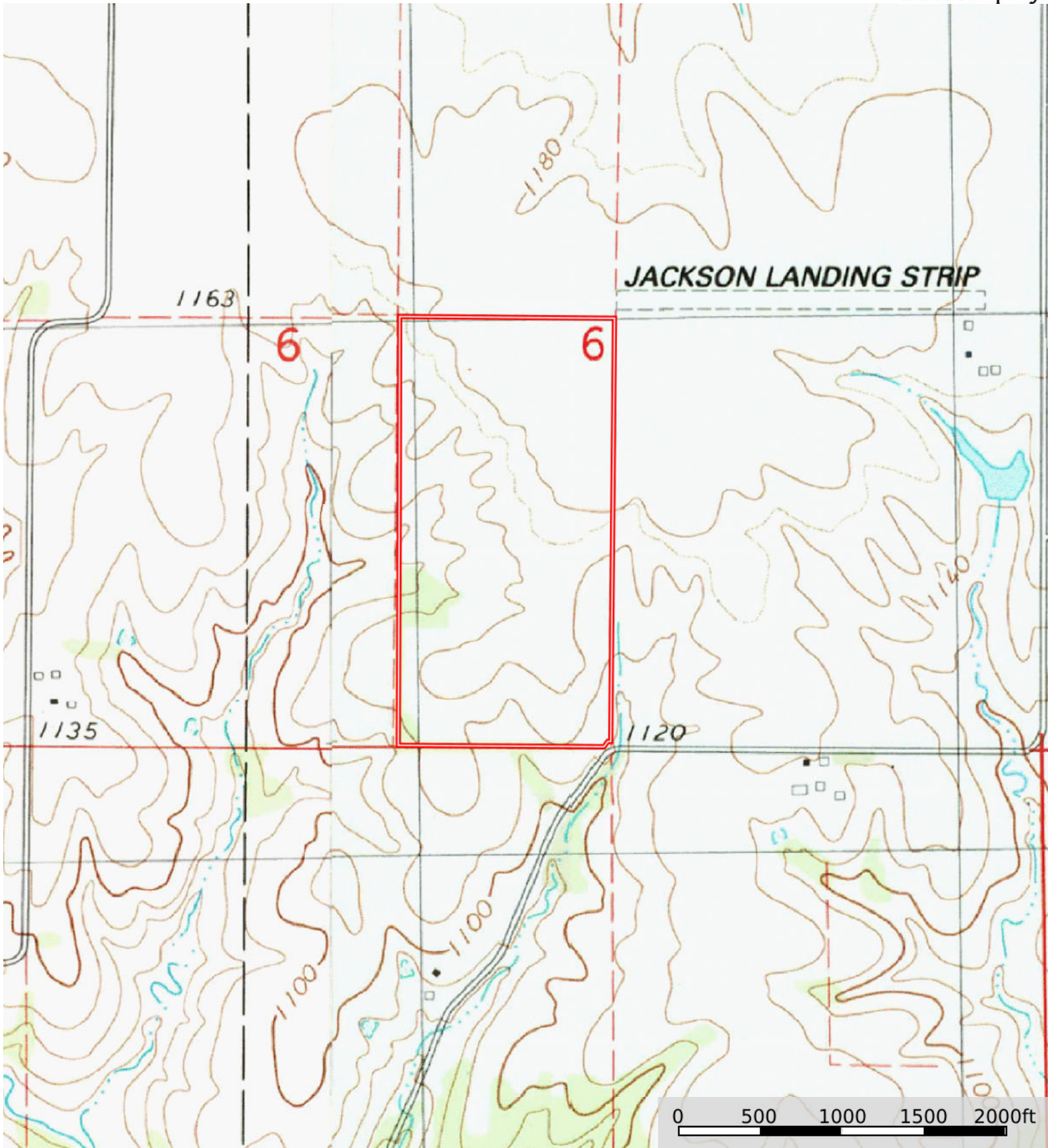
								
	1	2	3	4	5	6	7	8
'Wild Life'	•	•	•	•	•	•	•	•
Forestry	•	•	•	•	•	•	•	
Limited	•	•	•	•	•	•	•	
Moderate	•	•	•	•	•	•		
Intense	•	•	•	•	•			
Limited	•	•	•	•				
Moderate	•	•	•					
Intense	•	•						
Very Intense	•							

### Grazing Cultivation

(c) climatic limitations (e) susceptibility to erosion

(s) soil limitations within the rooting zone (w) excess of water





Boundary