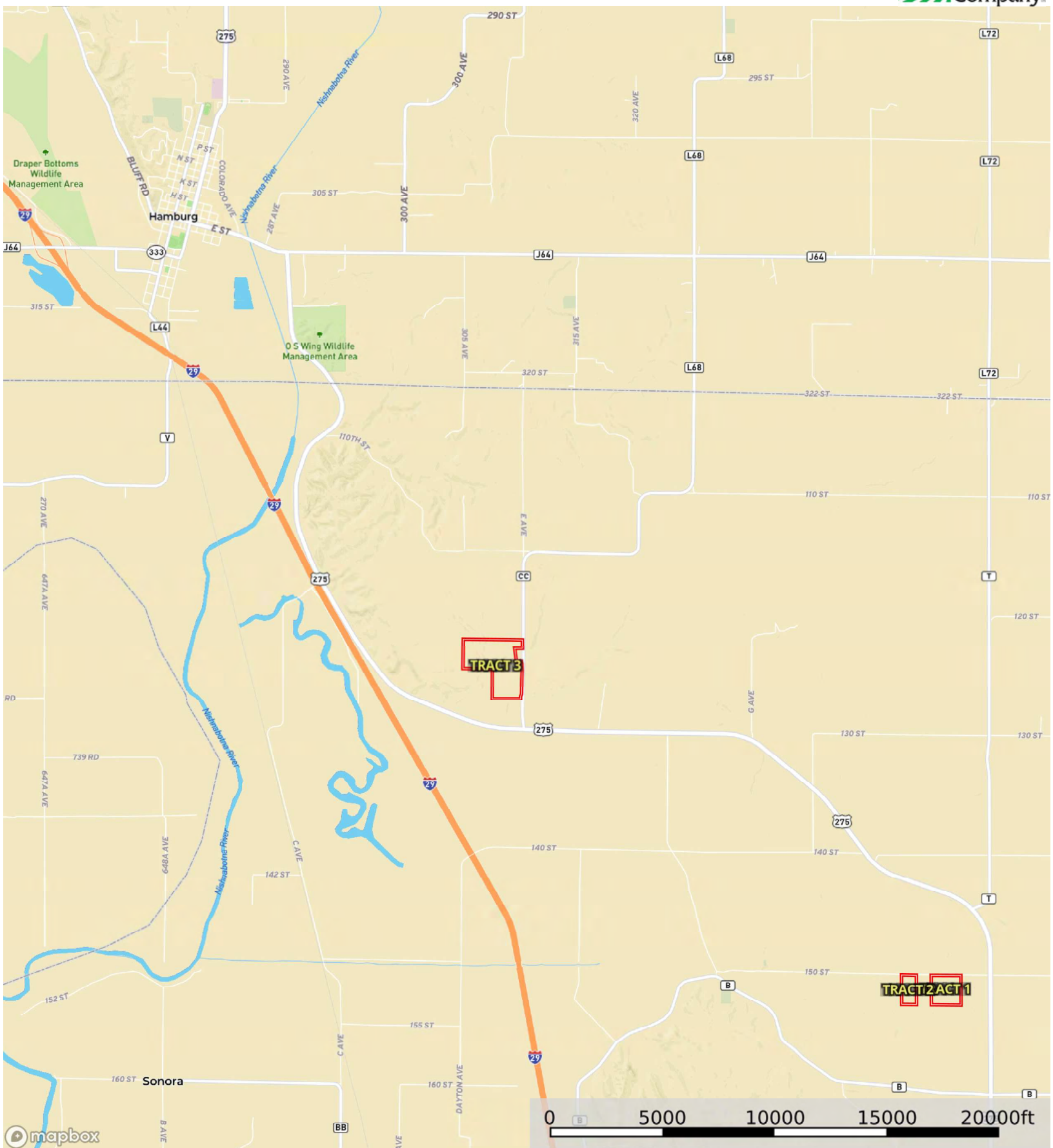


Atchison County, Missouri, 178.57 AC +/-





Boundary



Boundary

|  Boundary 40.06 ac

SOIL CODE	SOIL DESCRIPTION	ACRES	%	CPI	NCCPI	CAP
10033	Ida silt loam, 14 to 25 percent slopes, eroded	27.59	68.87	0	55	6e
10110	Monona silt loam, 5 to 9 percent slopes, eroded	12.47	31.13	0	81	3e
TOTALS		40.06(*)	100%	-	63.09	5.07





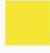



(*) Total acres may differ in the second decimal compared to the sum of each acreage soil. This is due to a round error because we only show the acres of each soil with two decimal.

Capability Legend

Increased Limitations and Hazards

Decreased Adaptability and Freedom of Choice Users

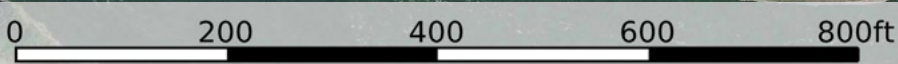
Land, Capability

								
	1	2	3	4	5	6	7	8
'Wild Life'	•	•	•	•	•	•	•	•
Forestry	•	•	•	•	•	•	•	
Limited	•	•	•	•	•	•	•	
Moderate	•	•	•	•	•	•		
Intense	•	•	•	•	•			
Limited	•	•	•	•				
Moderate	•	•	•					
Intense	•	•						
Very Intense	•							

Grazing Cultivation

(c) climatic limitations (e) susceptibility to erosion

(s) soil limitations within the rooting zone (w) excess of water





Boundary

|  Boundary 19.98 ac

SOIL CODE	SOIL DESCRIPTION	ACRES	%	CPI	NCCPI	CAP
10033	Ida silt loam, 14 to 25 percent slopes, eroded	12.18	60.96	0	55	6e
10110	Monona silt loam, 5 to 9 percent slopes, eroded	7.79	38.99	0	81	3e
13560	Napier silt loam, 2 to 5 percent slopes	0.01	0.05	0	89	2e
TOTALS		19.98(*)	100%	-	65.15	4.83









(*) Total acres may differ in the second decimal compared to the sum of each acreage soil. This is due to a round error because we only show the acres of each soil with two decimal.

Capability Legend

Increased Limitations and Hazards

Decreased Adaptability and Freedom of Choice Users

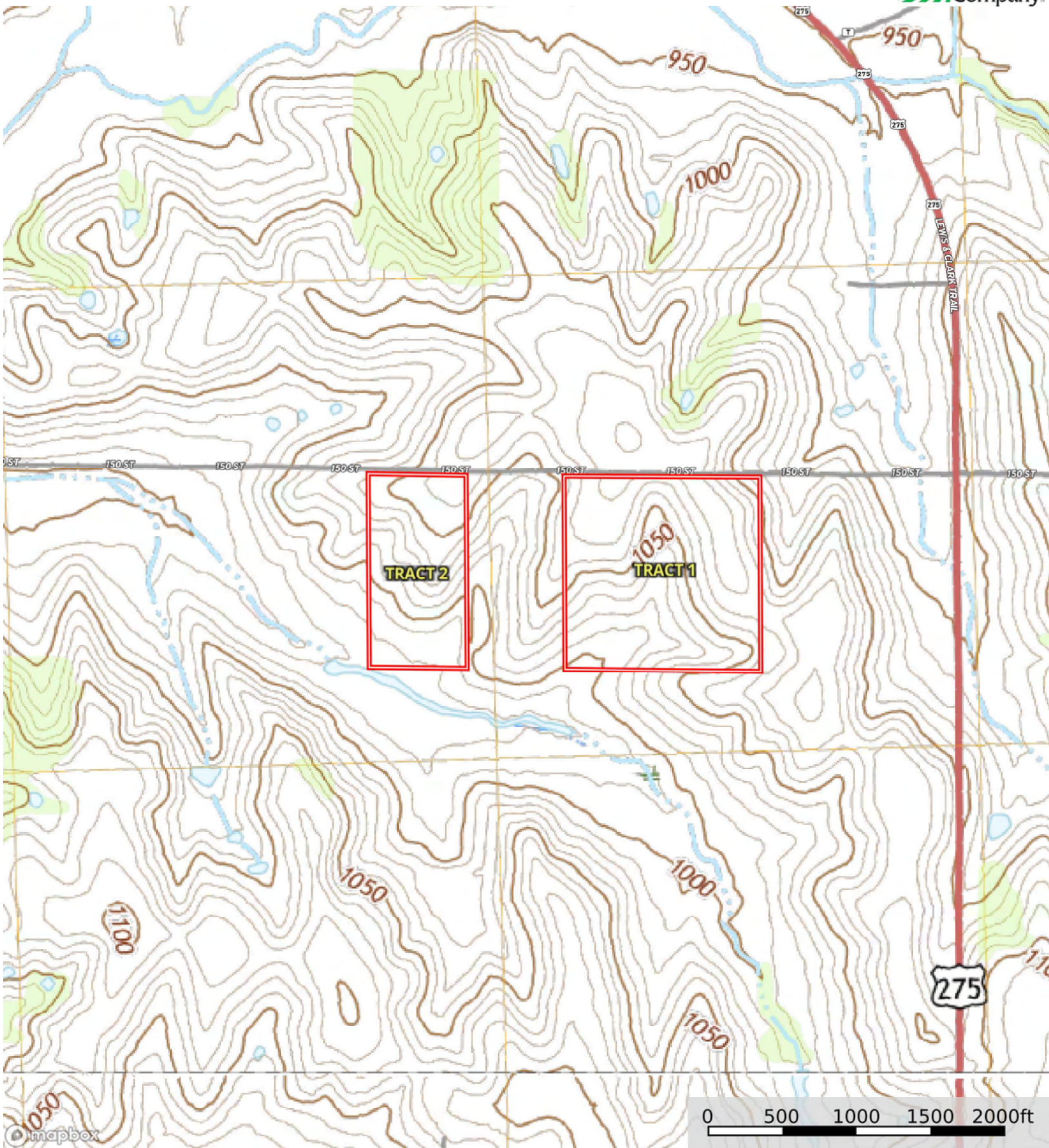
Land, Capability

								
	1	2	3	4	5	6	7	8
'Wild Life'	•	•	•	•	•	•	•	•
Forestry	•	•	•	•	•	•	•	
Limited	•	•	•	•	•	•	•	
Moderate	•	•	•	•	•	•		
Intense	•	•	•	•	•			
Limited	•	•	•	•				
Moderate	•	•	•					
Intense	•	•						
Very Intense	•							

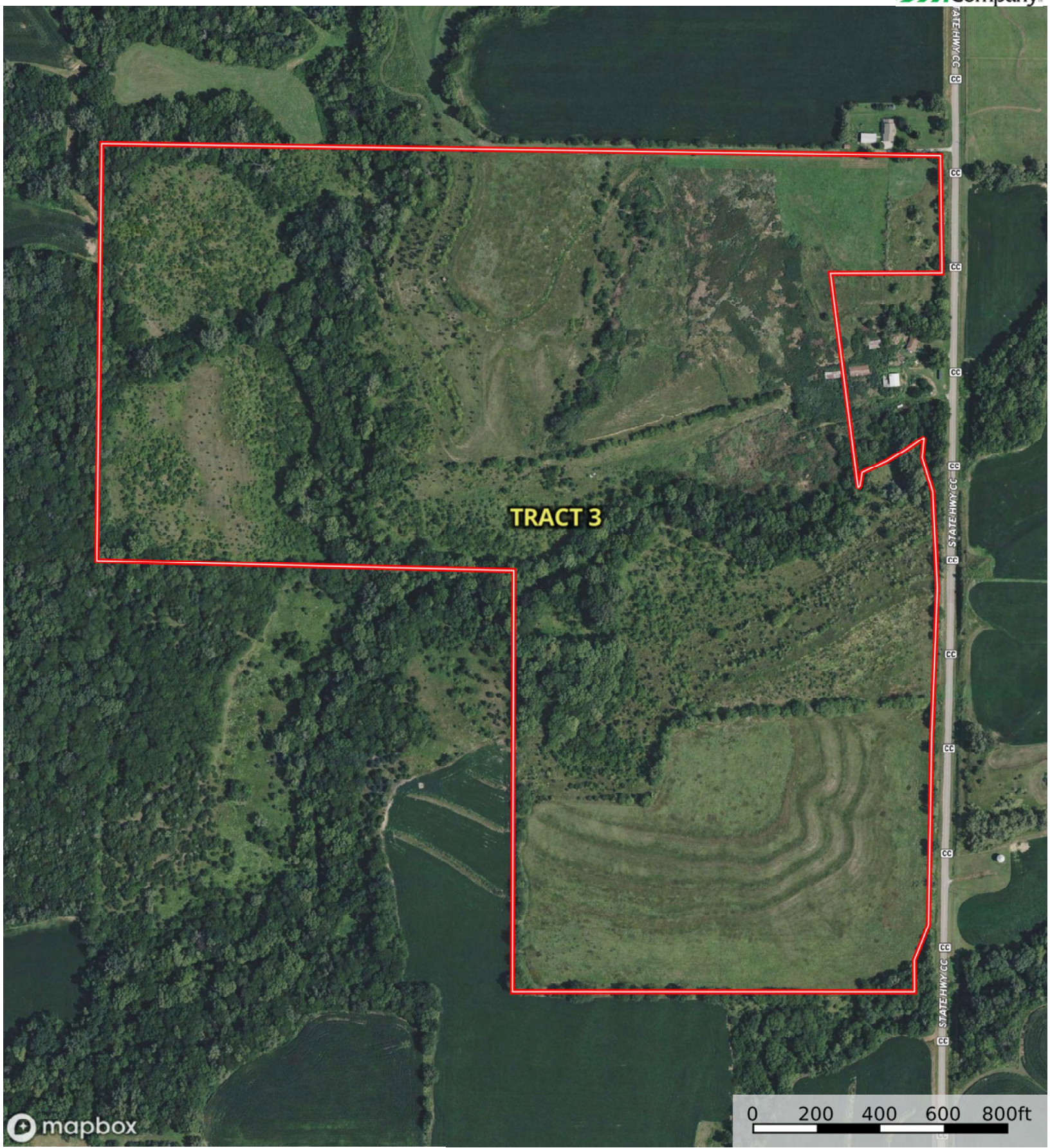
Grazing Cultivation

(c) climatic limitations (e) susceptibility to erosion

(s) soil limitations within the rooting zone (w) excess of water

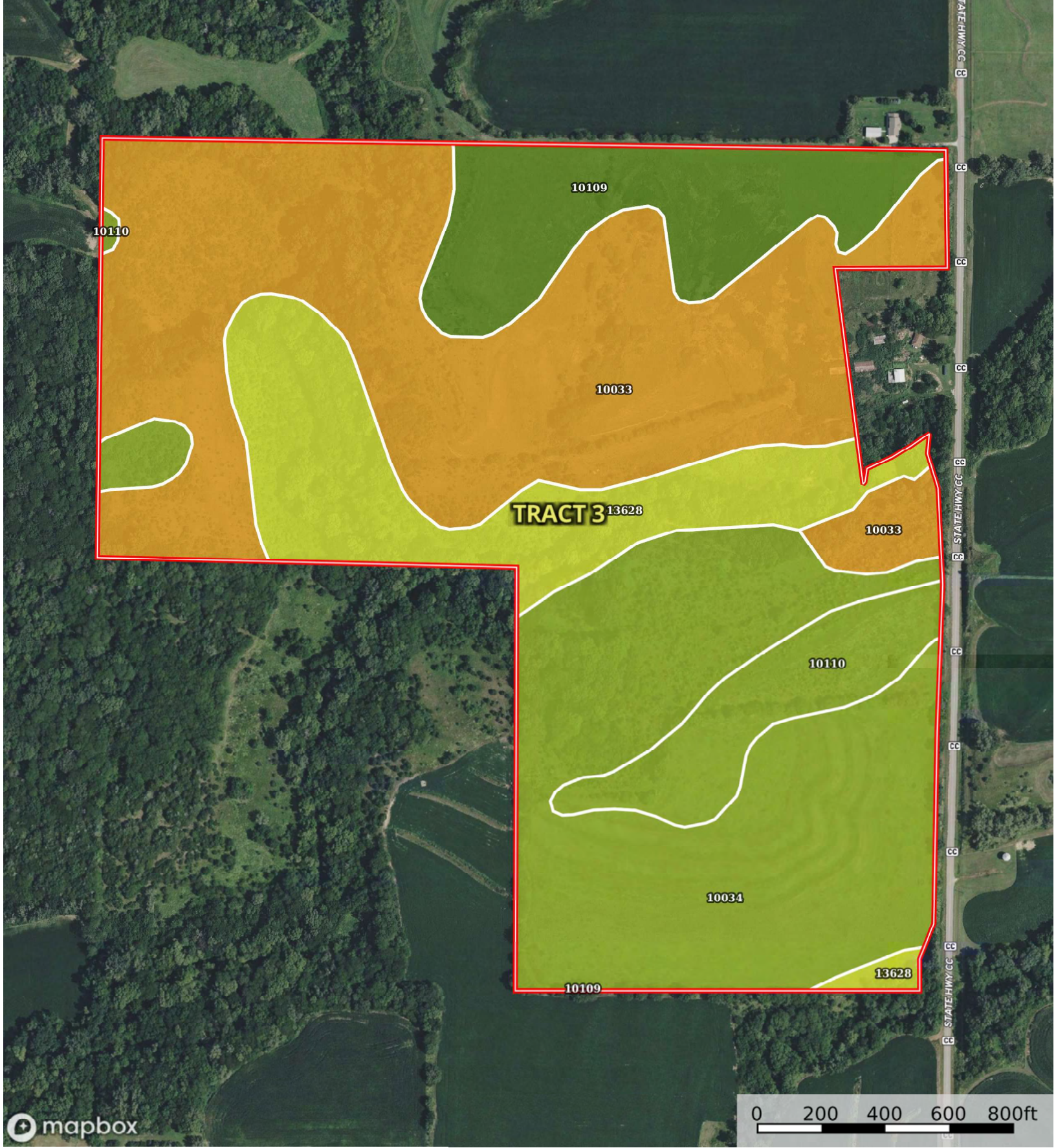


Boundary



Boundary

0 200 400 600 800ft



Boundary

Boundary 116.01 ac

SOIL CODE	SOIL DESCRIPTION	ACRES	%	CPI	NCCPI	CAP
10033	Ida silt loam, 14 to 25 percent slopes, eroded	45.22	38.98	0	55	6e
10034	Ida silt loam, 9 to 14 percent slopes, eroded	33.51	28.89	0	68	3e
13628	Napier-Gullied land complex, 5 to 14 percent slopes	16.37	14.11	0	12	4e
10109	Monona silt loam, 2 to 5 percent slopes	12.55	10.82	0	88	2e
10110	Monona silt loam, 5 to 9 percent slopes, eroded	8.36	7.21	0	81	3e
TOTALS		116.01(*)	100%	-	58.13	4.2

(*) Total acres may differ in the second decimal compared to the sum of each acreage soil. This is due to a round error because we only show the acres of each soil with two decimal.

Capability Legend

Increased Limitations and Hazards

Decreased Adaptability and Freedom of Choice Users

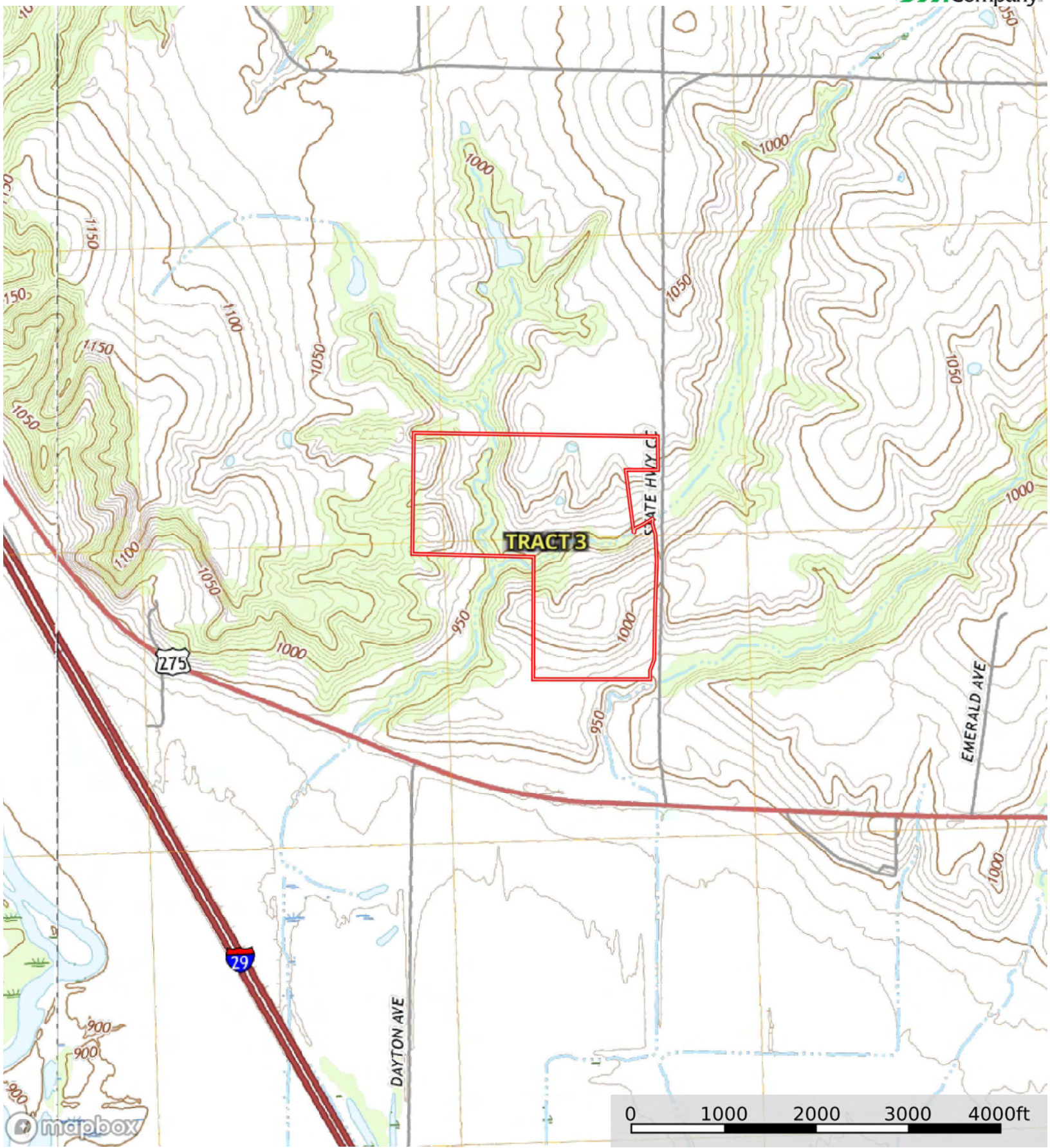
Land, Capability

	1	2	3	4	5	6	7	8
'Wild Life'	•	•	•	•	•	•	•	•
Forestry	•	•	•	•	•	•	•	
Limited	•	•	•	•	•	•	•	
Moderate	•	•	•	•	•	•		
Intense	•	•	•	•	•			
Limited	•	•	•	•				
Moderate	•	•	•					
Intense	•	•						
Very Intense	•							

Grazing Cultivation

(c) climatic limitations (e) susceptibility to erosion

(s) soil limitations within the rooting zone (w) excess of water



Boundary