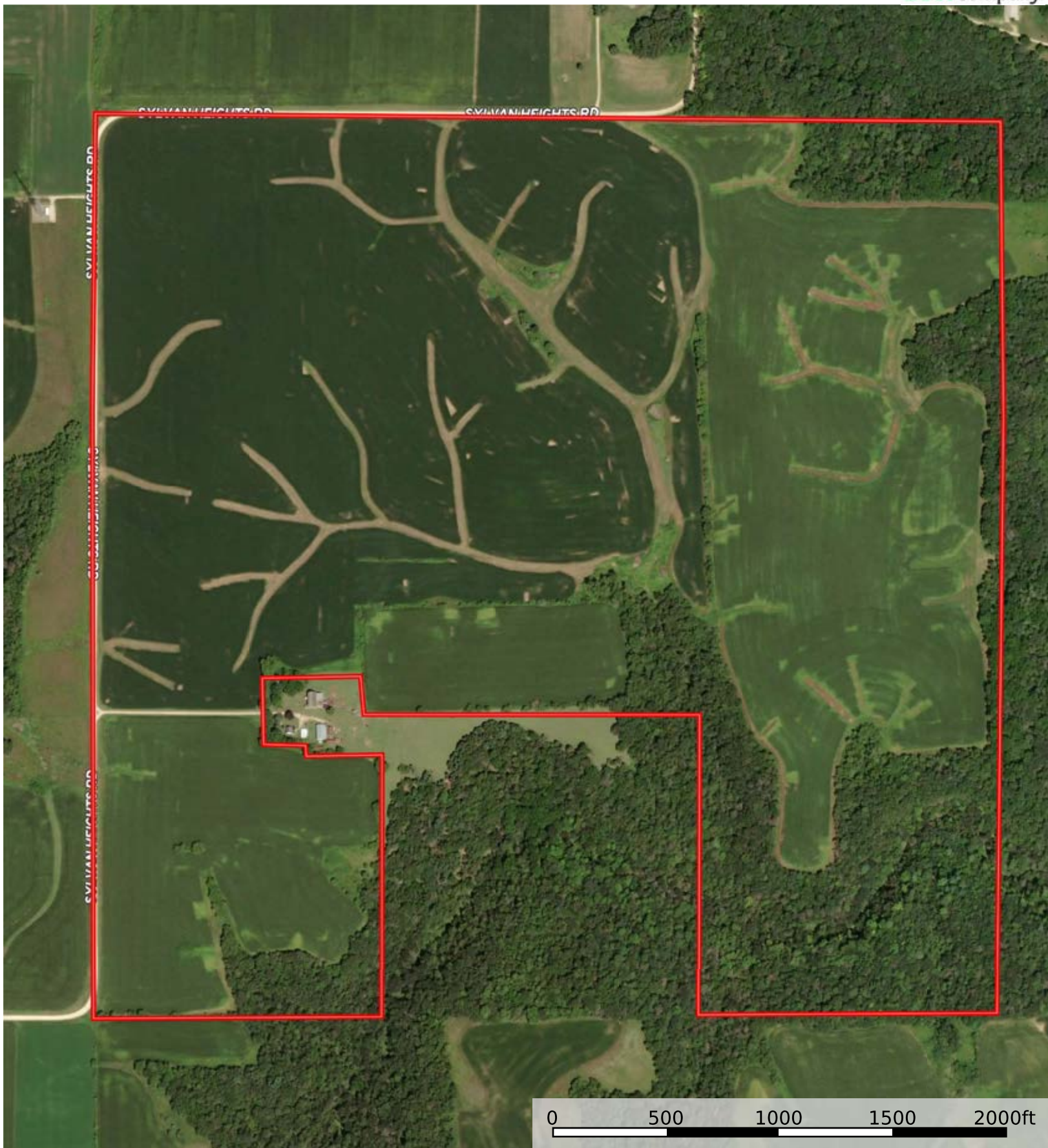

 Boundary



 Boundary



 Boundary

|  Boundary 318.49 ac

SOIL CODE	SOIL DESCRIPTION	ACRES	%	CPI	NCCPI	CAP
103C2	Seaton silt loam, driftless ridge, 6 to 12 percent slopes, moderately eroded	119.94	37.65	71	81	3e
103B	Seaton silt loam, driftless ridge, 2 to 6 percent slopes	85.33	26.79	85	88	2e
501D	NewGlarus silt loam, 12 to 20 percent slopes	30.15	9.47	45	62	4e
1857	Eitzen silt loam, channeled	23.35	7.33	20	64	5w
584F	Lamoille-Dorerton silt loams, 30 to 45 percent slopes	20.24	6.35	4	16	7e
103D2	Seaton silt loam, driftless ridge, 12 to 20 percent slopes, moderately eroded	12.66	3.97	62	75	4e
830D	Eleva-Seaton complex, 12 to 30 percent slopes	6.47	2.03	30	55	6s
501C	NewGlarus silt loam, 6 to 12 percent slopes	4.17	1.31	54	66	3e
592E	Lamoille-Elbaville silt loams, 20 to 30 percent slopes	2.83	0.89	13	19	6e
1830	Eitzen silt loam	2.63	0.83	91	87	2w
587C	Palsgrove silt loam, 6 to 12 percent slopes	2.44	0.77	71	78	3e
501E	NewGlarus silt loam, rocky, 12 to 30 percent slopes	2.25	0.71	6	44	6e
832G	Lacrescent-Rock outcrop complex, 45 to 70 percent slopes	2.22	0.7	1	9	7e
598B	Beavercreek silt loam, 1 to 8 percent slopes, stony	1.9	0.6	20	45	6s
501B	NewGlarus silt loam, 3 to 6 percent slopes	1.89	0.59	61	69	2e
11D	Sogn silt loam, rocky, 6 to 30 percent slopes	0.02	0.01	6	27	7s
TOTALS		318.49(*)	100%	61.21	73.15	3.41

(*) Total acres may differ in the second decimal compared to the sum of each acreage soil. This is due to a round error because we only show the acres of each soil with two decimal.

Capability Legend

Increased Limitations and Hazards

Decreased Adaptability and Freedom of Choice Users

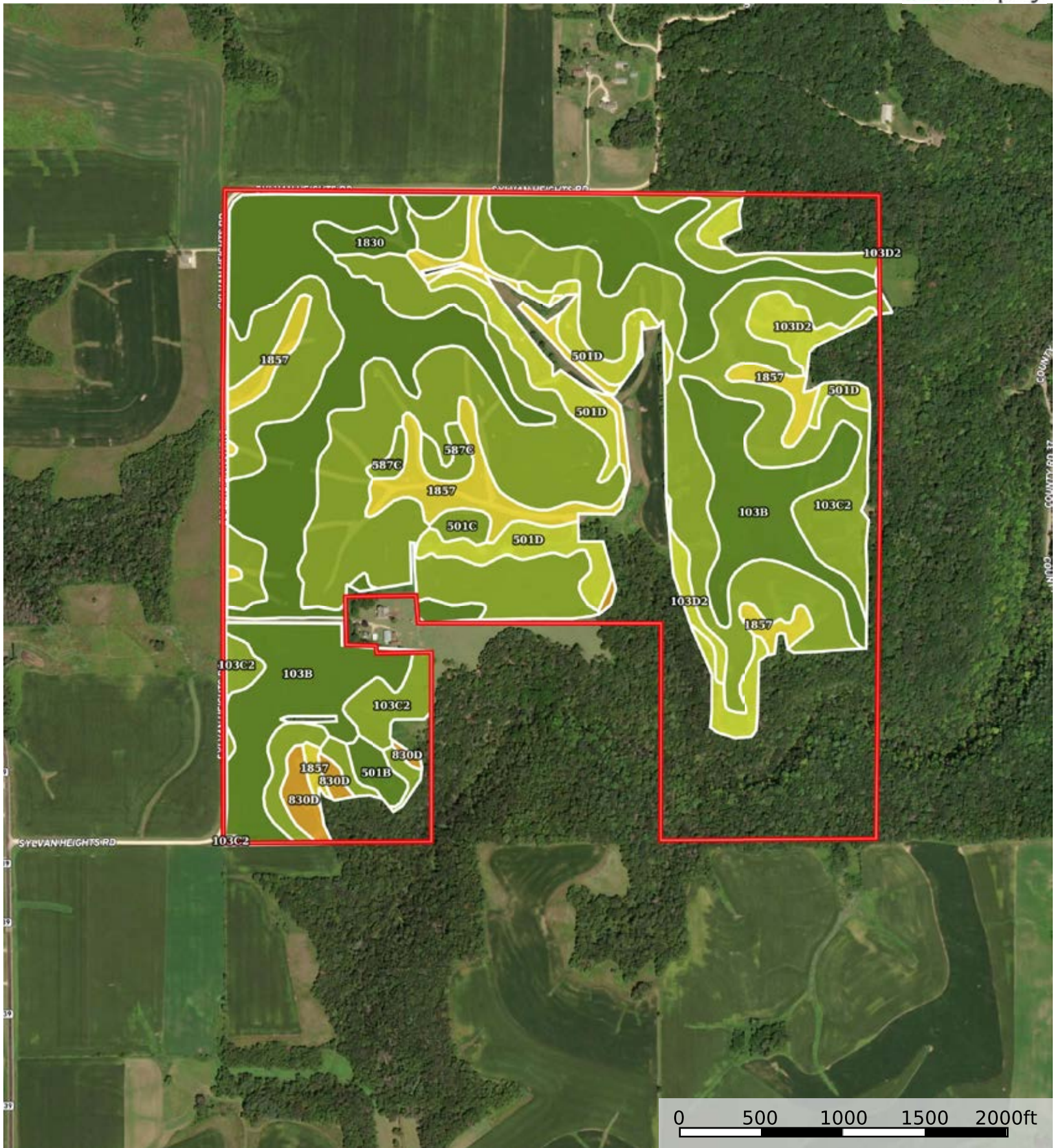
Land, Capability


								
	1	2	3	4	5	6	7	8
'Wild Life'	•	•	•	•	•	•	•	•
Forestry	•	•	•	•	•	•	•	
Limited	•	•	•	•	•	•	•	
Moderate	•	•	•	•	•	•		
Intense	•	•	•	•	•			
Limited	•	•	•	•				
Moderate	•	•	•					
Intense	•	•						
Very Intense	•							


Grazing Cultivation

(c) climatic limitations (e) susceptibility to erosion

(s) soil limitations within the rooting zone (w) excess of water



 Boundary

|  246.38 ac

SOIL CODE	SOIL DESCRIPTION	ACRES	%	CPI	NCCPI	CAP
103C2	Seaton silt loam, driftless ridge, 6 to 12 percent slopes, moderately eroded	111.1	45.1	71	81	3e
103B	Seaton silt loam, driftless ridge, 2 to 6 percent slopes	82.04	33.3	85	88	2e
1857	Eitzen silt loam, channeled	17.19	6.98	20	64	5w
501D	NewGlarus silt loam, 12 to 20 percent slopes	16.83	6.83	45	62	4e
103D2	Seaton silt loam, driftless ridge, 12 to 20 percent slopes, moderately eroded	5.97	2.42	62	75	4e
830D	Eleva-Seaton complex, 12 to 30 percent slopes	3.22	1.31	30	55	6s
501C	NewGlarus silt loam, 6 to 12 percent slopes	3.07	1.25	54	66	3e
1830	Eitzen silt loam	2.63	1.07	91	87	2w
587C	Palsgrove silt loam, 6 to 12 percent slopes	2.44	0.99	71	78	3e
501B	NewGlarus silt loam, 3 to 6 percent slopes	1.89	0.77	61	69	2e
TOTALS		246.38(*)	100%	69.5	80.12	2.92


(*) Total acres may differ in the second decimal compared to the sum of each acreage soil. This is due to a round error because we only show the acres of each soil with two decimal.

Capability Legend

Increased Limitations and Hazards

Decreased Adaptability and Freedom of Choice Users

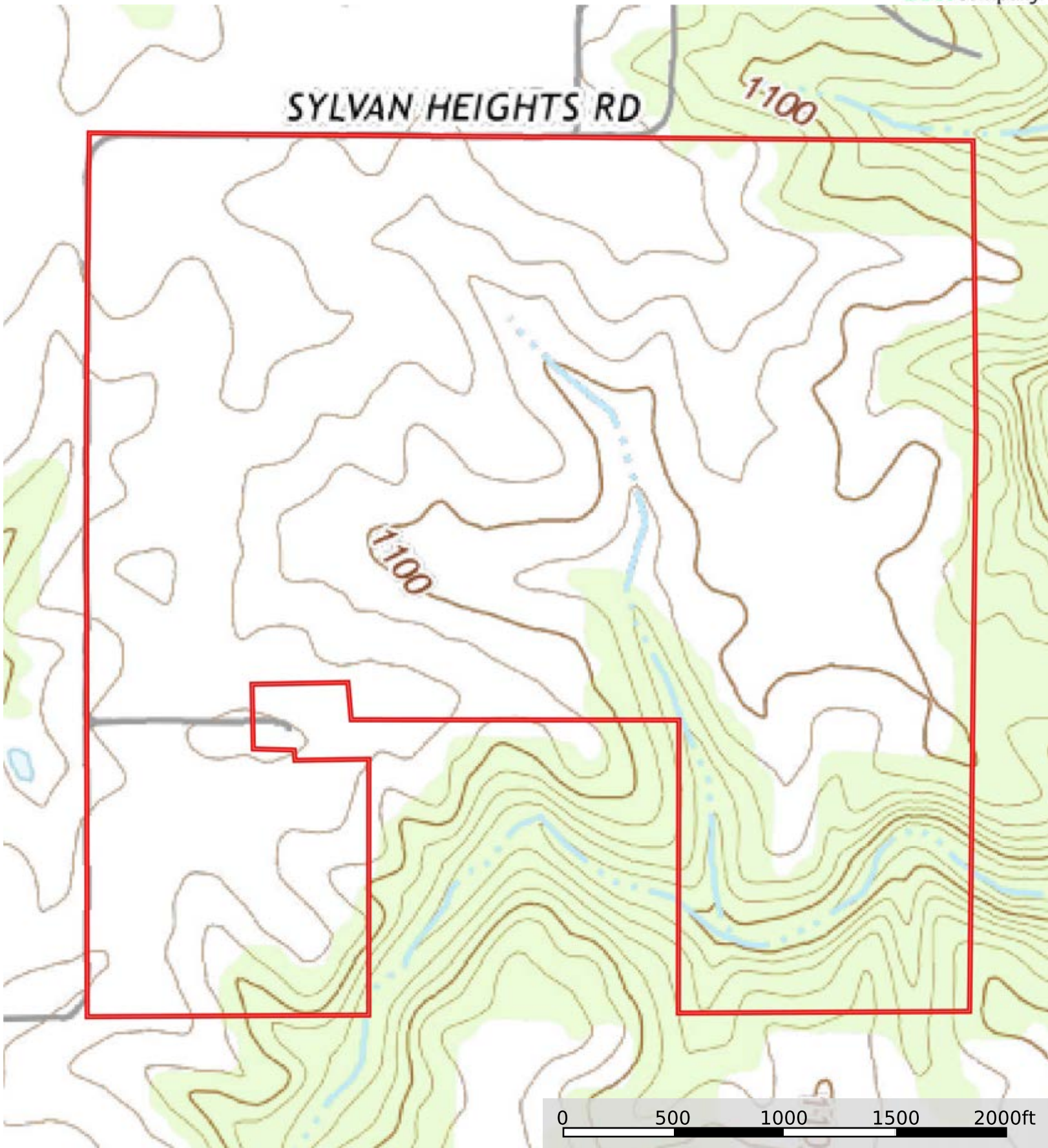
Land, Capability


								
	1	2	3	4	5	6	7	8
'Wild Life'	•	•	•	•	•	•	•	•
Forestry	•	•	•	•	•	•	•	
Limited	•	•	•	•	•	•	•	
Moderate	•	•	•	•	•	•		
Intense	•	•	•	•	•			
Limited	•	•	•	•				
Moderate	•	•	•					
Intense	•	•						
Very Intense	•							

Grazing Cultivation

(c) climatic limitations (e) susceptibility to erosion

(s) soil limitations within the rooting zone (w) excess of water



 Boundary