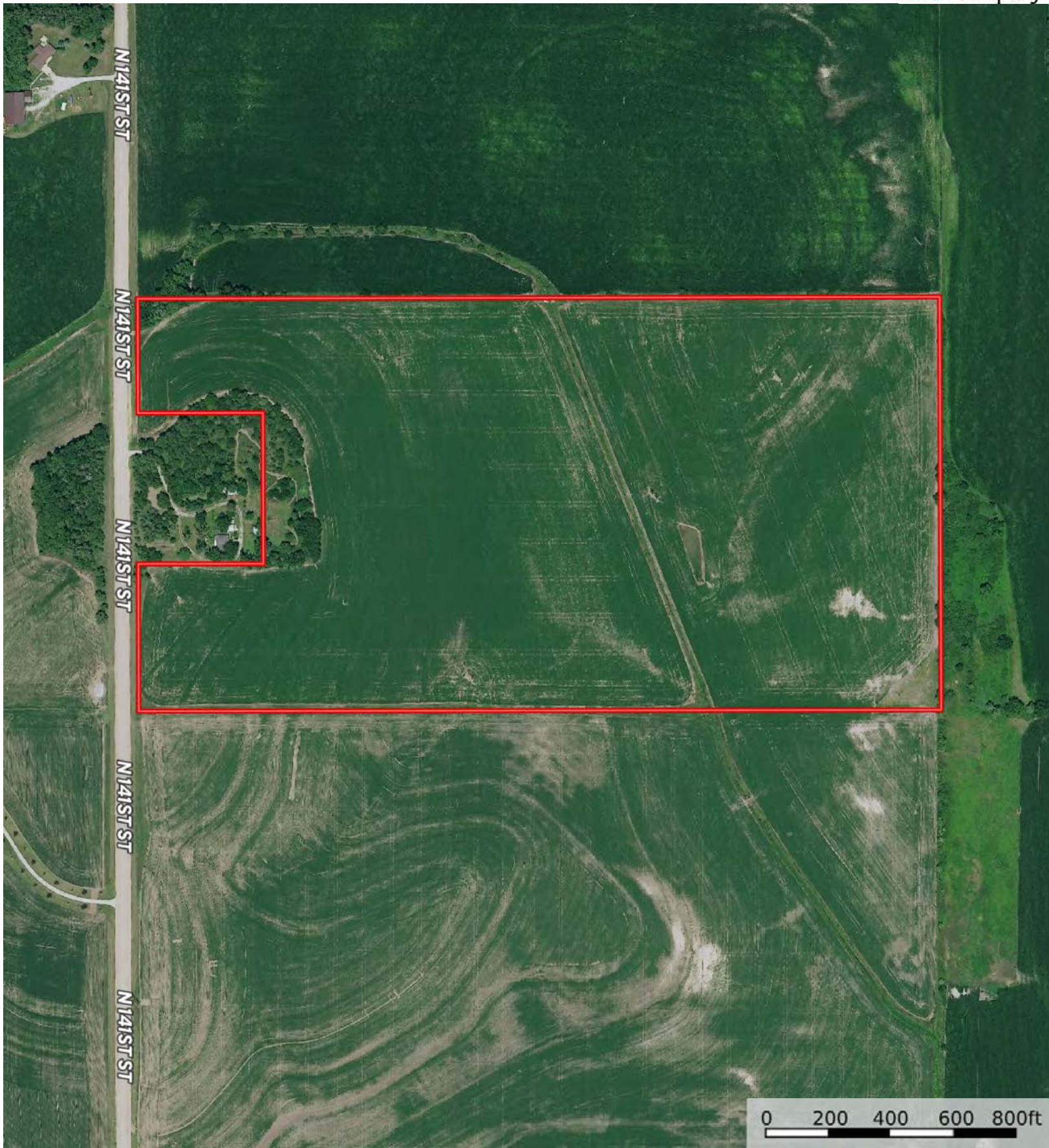




 Boundary



 Boundary



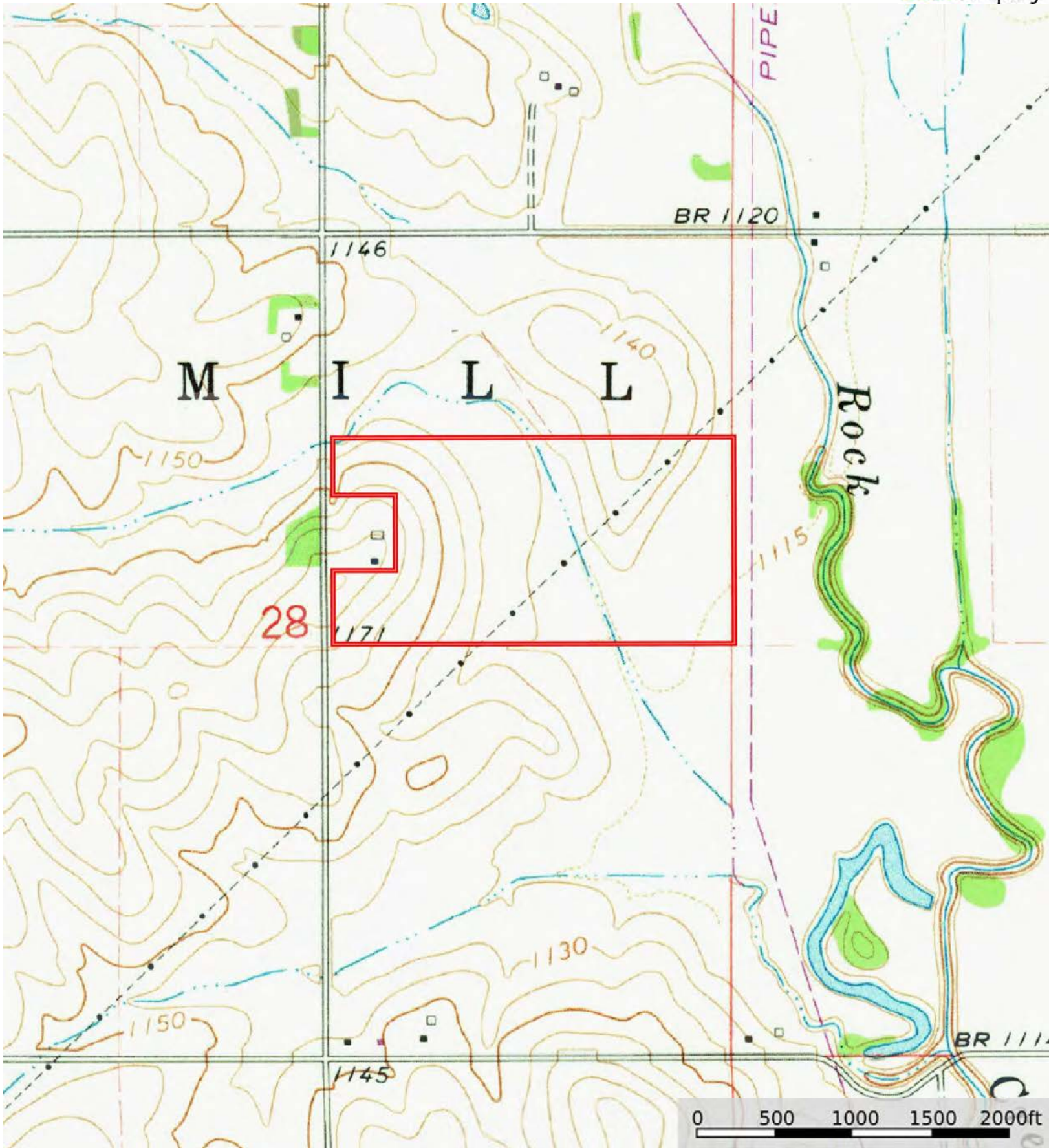
 Boundary


Boundary 73.51 ac

SOIL CODE	SOIL DESCRIPTION	ACRES	%	CPI	NCCPI	CAP
7207	Aksarben silty clay loam, 6 to 11 percent slopes	27.87	37.92	0	67	3e
7770	Colo silty clay loam, occasionally flooded	13.39	18.22	0	61	2w
4101	Littlesalt silty clay loam, 1 to 6 percent slopes	9.52	12.95	0	38	4s
7017	Salmo silty clay loam, occasionally flooded	7.3	9.93	0	28	4w
7750	Nodaway silt loam, occasionally flooded	6.21	8.45	0	94	2w
7091	Wabash silty clay, occasionally flooded	4.2	5.71	0	41	3w
3840	Geary silty clay loam, 7 to 11 percent slopes, eroded	2.84	3.86	0	74	4e
7206	Aksarben silty clay loam, 2 to 6 percent slopes	2.18	2.97	0	68	2e
TOTALS		73.51(*)	100%	-	59.38	2.97

(*) Total acres may differ in the second decimal compared to the sum of each acreage soil. This is due to a round error because we only show the acres of each soil with two decimal.





 Boundary