



 Boundary



 Boundary

 All Polygons 1122.8 ac

SOIL CODE	SOIL DESCRIPTION	ACRES	%	CPI	NCCPI	CAP
BoyC	Boy loamy fine sand, 1 to 5 percent slopes	533.6 4	47.53	0	24	3s
SplB	Splendora fine sandy loam, 0 to 2 percent slopes	233.5 5	20.8	0	42	2w
SosA	Sorter-Tarkington complex, 0 1 percent slopes	74.42	6.63	0	40	4w
LelA	Lelavale silt loam, 0 to 1 percent slopes, frequently ponded	71.14	6.34	0	16	6w
Eu	Betis loamy fine sand	39.39	3.51	0	29	3s
WesA	Westcott very fine sandy loam, 0 to 1 percent slopes	38.75	3.45	0	61	2w
CoC	Conroe loamy fine sand, 0 to 5 percent slopes	35.66	3.18	0	47	3s
WetA	Westcott-Plumgrove complex, 0 to 1 percent slopes	23.73	2.11	0	54	2w
VorA	Voss sand, 0 to 1 percent slopes, occasionally flooded	20.86	1.86	0	21	3w
WalA	Waller silt loam, 0 to 1 percent slopes	18.45	1.64	0	41	4w
TurB	Turkey sand, 1 to 3 percent slopes	16.84	1.5	0	23	4s
KanA	Kaman clay, 0 to 1 percent slopes, frequently flooded	8.01	0.71	0	40	5w
HatA	Hatliff-Pluck-Kian complex, 0 to 1 percent slopes, frequently flooded	3.77	0.34	0	34	2w
BemA	Belrose-Caneyhead frequently ponded complex, 0 to 1 percent slopes	2.48	0.22	0	28	2w
BozA	Boy-Urban land complex, 0 to 1 percent slopes	1.62	0.14	0	24	3s
SpmA	Splendora-Urban land complex, 0 to 2 percent slopes	0.49	0.04	0	42	2w
TOTALS		1122. 8(*)	100%	-	31.49	3.03

(*) Total acres may differ in the second decimal compared to the sum of each acreage soil. This is due to a round error because we only show the acres of each soil with two decimal.

 Boundary 908.58 ac

SOIL CODE	SOIL DESCRIPTION	ACRES	%	CPI	NCCPI	CAP
BoyC	Boy loamy fine sand, 1 to 5 percent slopes	451.6 7	49.71	0	24	3s
SplB	Splendora fine sandy loam, 0 to 2 percent slopes	196.1 2	21.58	0	42	2w
SosA	Sorter-Tarkington complex, 0 1 percent slopes	74.42	8.19	0	40	4w
LelA	Lelavale silt loam, 0 to 1 percent slopes, frequently ponded	71.14	7.83	0	16	6w
Eu	Betis loamy fine sand	38.92	4.28	0	29	3s
WesA	Westcott very fine sandy loam, 0 to 1 percent slopes	38.75	4.26	0	61	2w
WalA	Waller silt loam, 0 to 1 percent slopes	18.45	2.03	0	41	4w
TurB	Turkey sand, 1 to 3 percent slopes	16.84	1.85	0	23	4s
WetA	Westcott-Plumgrove complex, 0 to 1 percent slopes	1.31	0.14	0	54	2w

CoC	Conroe loamy fine sand, 0 to 5 percent slopes	0.96	0.11	0	47	3s
TOTALS		908.58(*)	100%	-	30.76	3.1

(*) Total acres may differ in the second decimal compared to the sum of each acreage soil. This is due to a round error because we only show the acres of each soil with two decimal.

 Boundary 156.92 ac

SOIL CODE	SOIL DESCRIPTION	ACRES	%	CPI	NCCPI	CAP
BoyC	Boy loamy fine sand, 1 to 5 percent slopes	71.74	45.72	0	24	3s
SplB	Splendora fine sandy loam, 0 to 2 percent slopes	37.43	23.85	0	42	2w
WetA	Westcott-Plumgrove complex, 0 to 1 percent slopes	22.42	14.29	0	54	2w
CoC	Conroe loamy fine sand, 0 to 5 percent slopes	19.89	12.68	0	47	3s
HatA	Hatliff-Pluck-Kian complex, 0 to 1 percent slopes, frequently flooded	3.33	2.12	0	34	2w
BozA	Boy-Urban land complex, 0 to 1 percent slopes	1.62	1.03	0	24	3s
SpmA	Splendora-Urban land complex, 0 to 2 percent slopes	0.49	0.31	0	42	2w
TOTALS		156.92(*)	100%	-	35.76	2.59

(*) Total acres may differ in the second decimal compared to the sum of each acreage soil. This is due to a round error because we only show the acres of each soil with two decimal.

 Boundary 42.02 ac

SOIL CODE	SOIL DESCRIPTION	ACRES	%	CPI	NCCPI	CAP
VorA	Voss sand, 0 to 1 percent slopes, occasionally flooded	20.86	49.65	0	21	3w
BoyC	Boy loamy fine sand, 1 to 5 percent slopes	10.23	24.35	0	24	3s
KanA	Kaman clay, 0 to 1 percent slopes, frequently flooded	8.01	19.07	0	40	5w
BemA	Belrose-Caneyhead frequently ponded complex, 0 to 1 percent slopes	2.48	5.9	0	28	2w
HatA	Hatliff-Pluck-Kian complex, 0 to 1 percent slopes, frequently flooded	0.44	1.05	0	34	2w
TOTALS		42.02(*)	100%	-	25.91	3.31

(*) Total acres may differ in the second decimal compared to the sum of each acreage soil. This is due to a round error because we only show the acres of each soil with two decimal.

 Boundary 14.11 ac

SOIL CODE	SOIL DESCRIPTION	ACRES	%	CPI	NCCPI	CAP
CoC	Conroe loamy fine sand, 0 to 5 percent slopes	13.64	96.6	0	47	3s
Eu	Betis loamy fine sand	0.47	3.33	0	29	3s
TOTALS		14.11(*)	100%	-	46.37	3.0

(*) Total acres may differ in the second decimal compared to the sum of each acreage soil. This is due to a round error because we only show the acres of each soil with two decimal.



| Boundary 1.17 ac

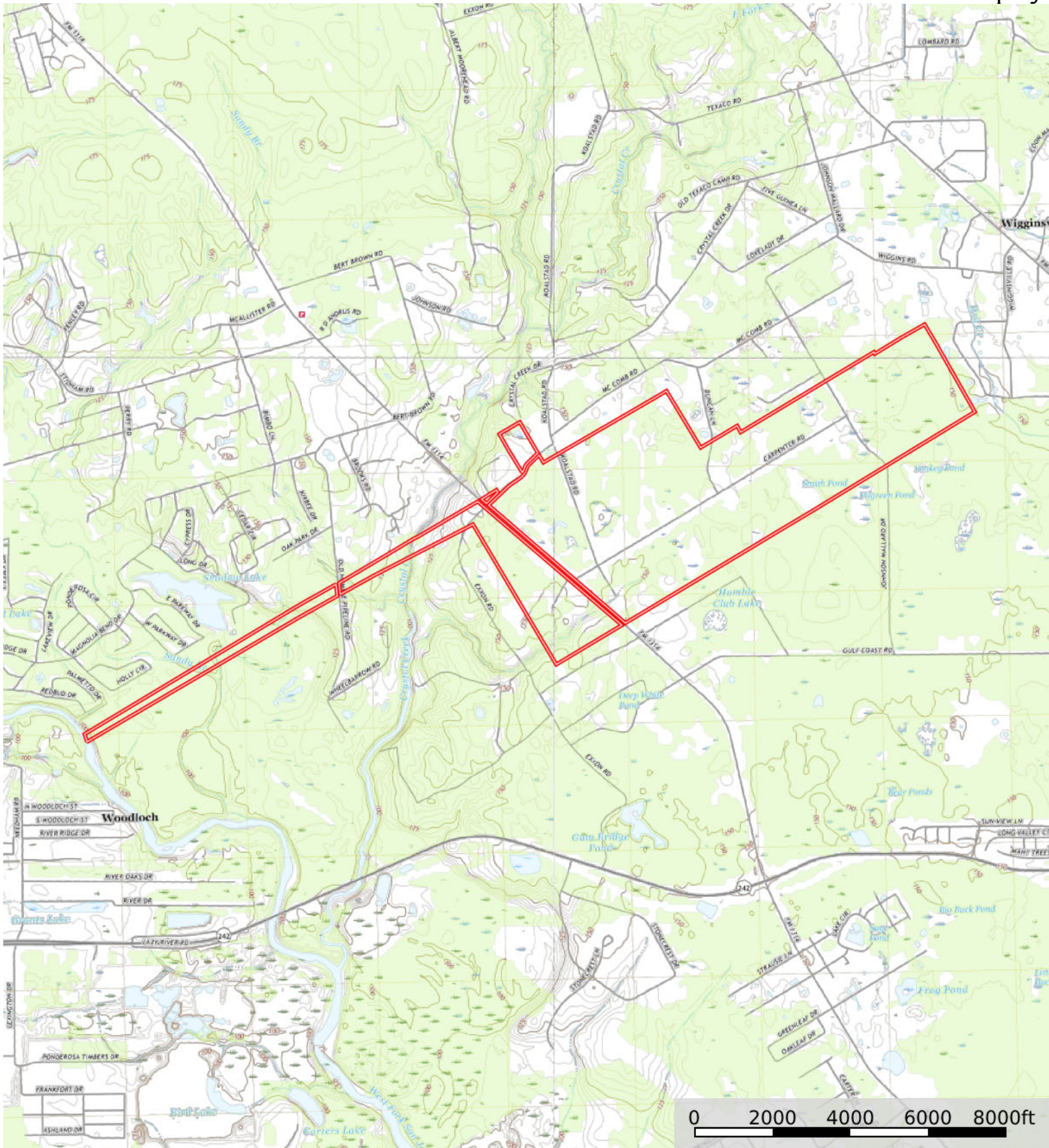
SOIL CODE	SOIL DESCRIPTION	ACRES	%	CPI	NCCPI	CAP
CoC	Conroe loamy fine sand, 0 to 5 percent slopes	1.17	100	0	47	3s
TOTALS		1.17(*)	100%	-	47.0	3

(*) Total acres may differ in the second decimal compared to the sum of each acreage soil. This is due to a round error because we only show the acres of each soil with two decimal.



Moore Forbush

Montgomery County, Texas, 1155 AC +/-



Boundary

