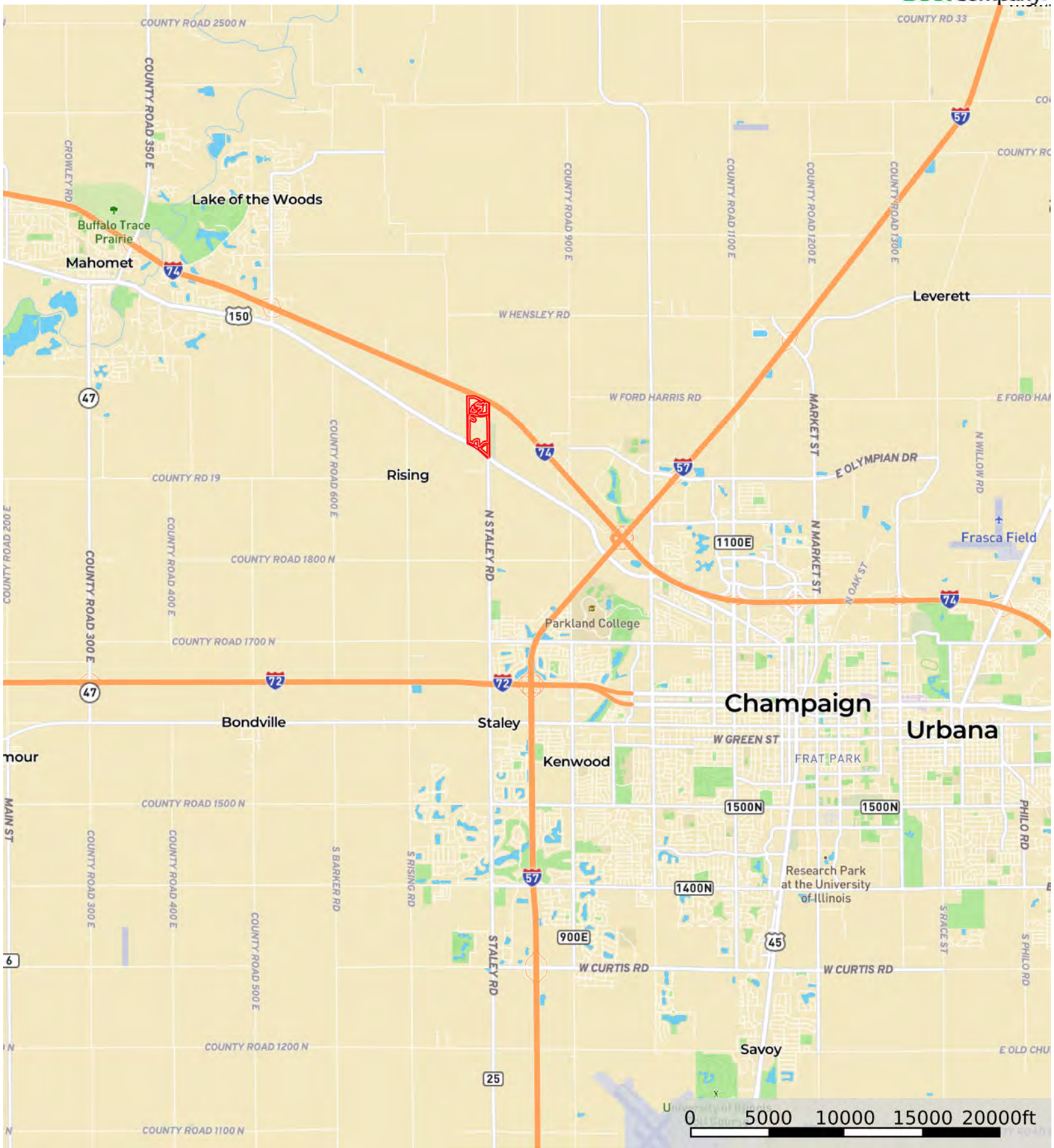


Morris Farm

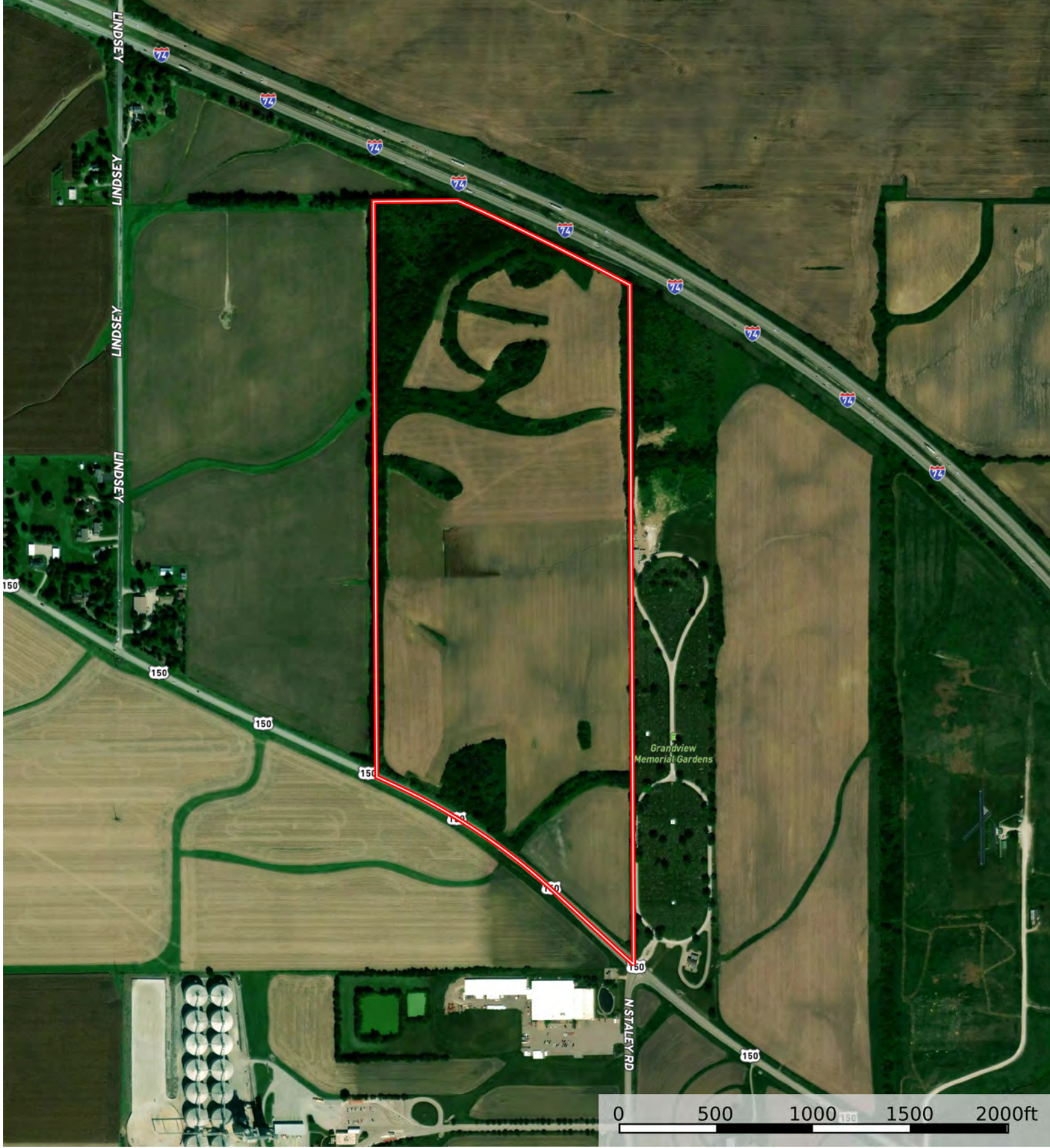
Champaign County, Illinois, 98.73 AC +/-



Boundary



The information contained herein was obtained from sources deemed to be reliable. Land id™ Services makes no warranties or guarantees as to the completeness or accuracy thereof.



 Boundary



 Boundary

|  All Polygons 67.04 ac

SOIL CODE	SOIL DESCRIPTION	ACRES	%	PI	NCCPI	CAP
622C2	Wyanet silt loam, 5 to 10 percent slopes, eroded	26.37	39.34	112	59	3e
622B	Wyanet silt loam, 2 to 5 percent slopes	22.13	33.02	118	69	2e
154A	Flanagan silt loam, 0 to 2 percent slopes	7.07	10.55	144	90	1
152A	Drummer silty clay loam, 0 to 2 percent slopes	4.56	6.8	144	83	2w
171B	Catlin silt loam, 2 to 5 percent slopes	4.4	6.56	137	77	2e
481A	Raub silt loam, non-densic substratum, 0 to 2 percent slopes	2.51	3.74	134	87	1
TOTALS		67.04(*)	100%	122.0 1	69.44	2.25

(*) Total acres may differ in the second decimal compared to the sum of each acreage soil. This is due to a round error because we only show the acres of each soil with two decimal.

|  Boundary 9.8 ac

SOIL CODE	SOIL DESCRIPTION	ACRES	%	PI	NCCPI	CAP
622C2	Wyanet silt loam, 5 to 10 percent slopes, eroded	8.64	88.16	112	59	3e
481A	Raub silt loam, non-densic substratum, 0 to 2 percent slopes	1.12	11.43	134	87	1
622B	Wyanet silt loam, 2 to 5 percent slopes	0.04	0.41	118	69	2e
TOTALS		9.8(*)	100%	114.5 4	62.24	2.77

(*) Total acres may differ in the second decimal compared to the sum of each acreage soil. This is due to a round error because we only show the acres of each soil with two decimal.

|  Boundary 1.6 ac

SOIL CODE	SOIL DESCRIPTION	ACRES	%	PI	NCCPI	CAP
622C2	Wyanet silt loam, 5 to 10 percent slopes, eroded	1	62.5	112	59	3e
481A	Raub silt loam, non-densic substratum, 0 to 2 percent slopes	0.56	35	134	87	1
152A	Drummer silty clay loam, 0 to 2 percent slopes	0.04	2.5	144	83	2w
TOTALS		1.6(*)	100%	120.5	69.4	2.28

(*) Total acres may differ in the second decimal compared to the sum of each acreage soil. This is due to a round error because we only show the acres of each soil with two decimal.

|  Boundary 49.79 ac

SOIL CODE	SOIL DESCRIPTION	ACRES	%	PI	NCCPI	CAP
622B	Wyanet silt loam, 2 to 5 percent slopes	22.09	44.38	118	69	2e
622C2	Wyanet silt loam, 5 to 10 percent slopes, eroded	16.73	33.61	112	59	3e
154A	Flanagan silt loam, 0 to 2 percent slopes	7.07	14.2	144	90	1
152A	Drummer silty clay loam, 0 to 2 percent slopes	3.07	6.17	144	83	2w
481A	Raub silt loam, non-densic substratum, 0 to 2 percent slopes	0.83	1.67	134	87	1

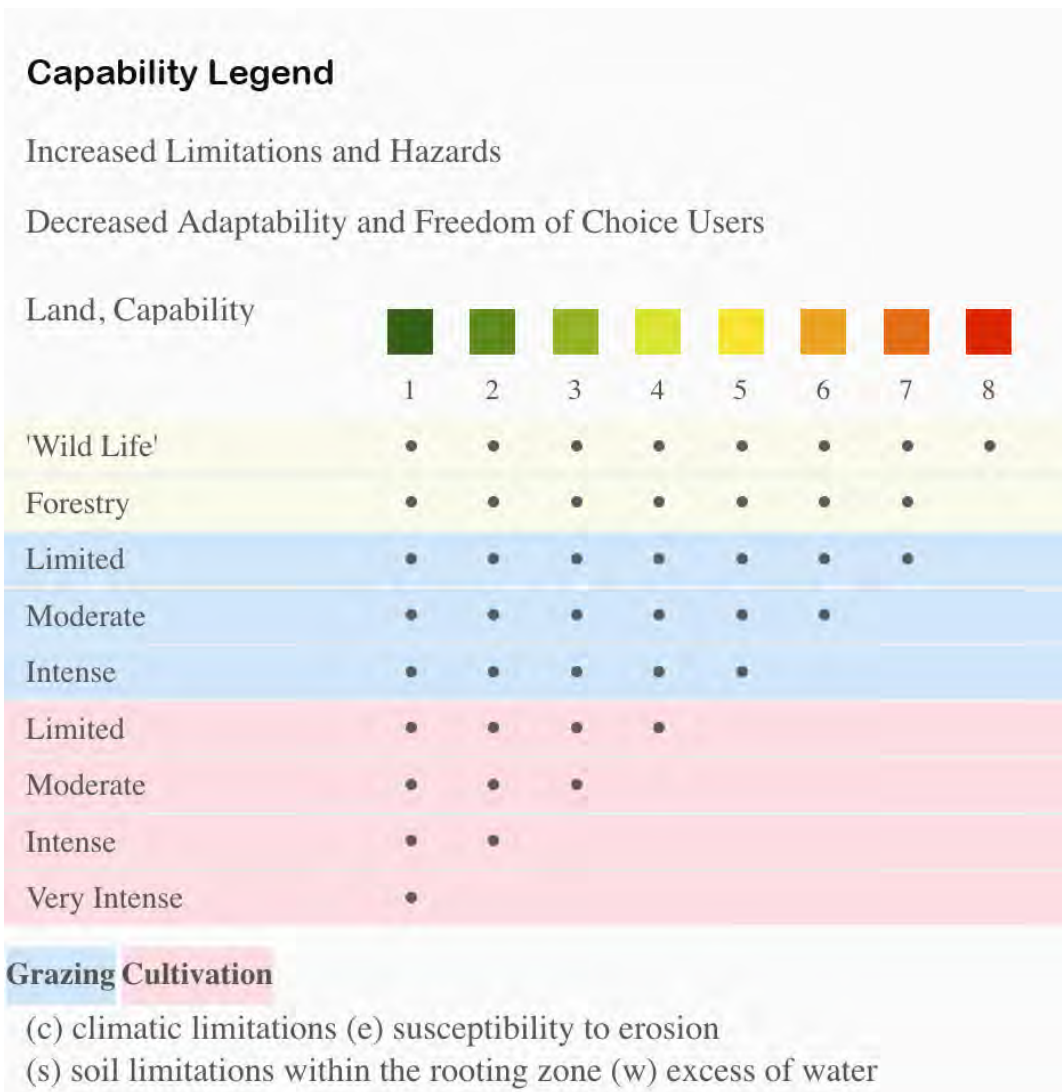
TOTALS		49.79(*)	100%	121.57	69.8	2.18
--------	--	----------	------	--------	------	------

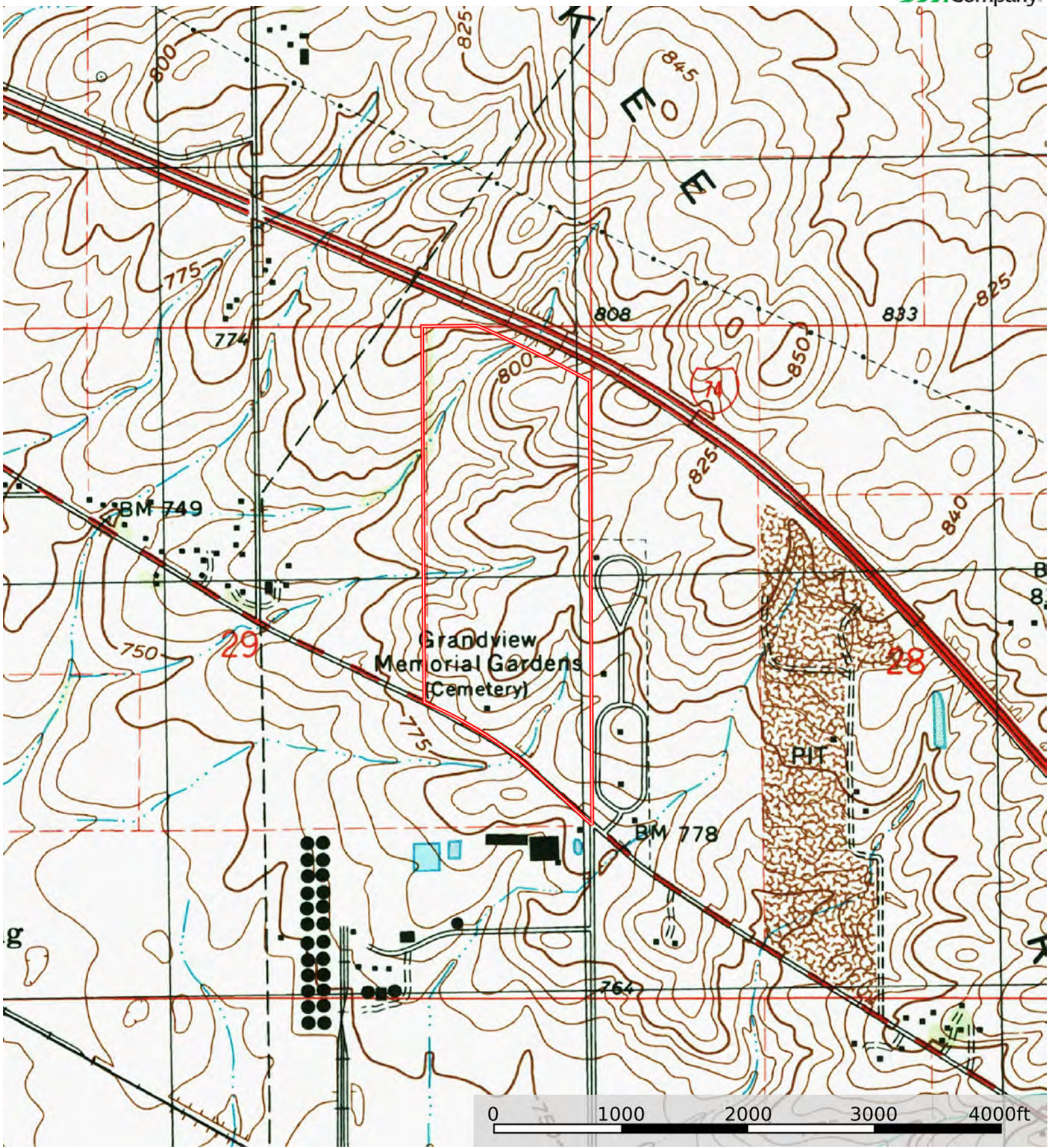
(*) Total acres may differ in the second decimal compared to the sum of each acreage soil. This is due to a round error because we only show the acres of each soil with two decimal.

|  Boundary 5.85 ac

SOIL CODE	SOIL DESCRIPTION	ACRES	%	PI	NCCPI	CAP
171B	Catlin silt loam, 2 to 5 percent slopes	4.4	75.21	137	77	2e
152A	Drummer silty clay loam, 0 to 2 percent slopes	1.45	24.79	144	83	2w
TOTALS		5.85(*)	100%	138.74	78.49	2.0

(*) Total acres may differ in the second decimal compared to the sum of each acreage soil. This is due to a round error because we only show the acres of each soil with two decimal.





 Boundary