

Tract Boundary

Noncropland

PLSS

Cropland

Wetland Determination Identifiers

- Restricted Use
- Limited Restrictions
- Exempt from Conservation
- Compliance Provisions

Unless Otherwise Noted:

Barley = Spring for Grain	Soybeans = Common for Grain
Canola = Spring for Processing	Sunflowers = Oil for Grain
Corn = Yellow for Grain	Wheat = Spring for Grain
Flax = Common for Grain	All fields are non-irrigated
Oats = Spring for Grain	Shares are 100% to operator

2025 Program Year

Phy. County: Richland

2023 imagery

**S20 T132N R49W**

0350700

Ft

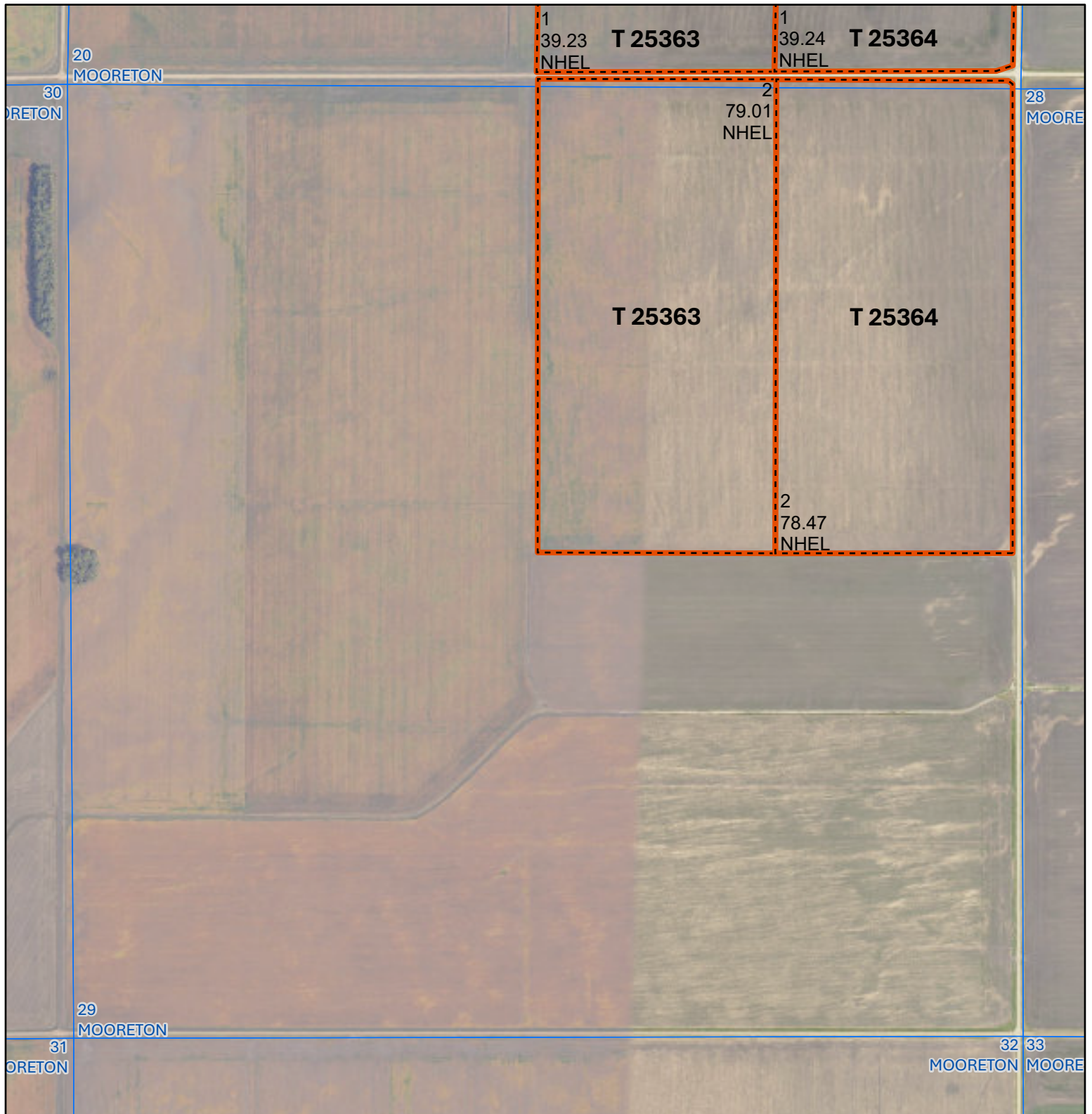
Map Created 04/30/2025



United States  
Department of  
Agriculture

Richland County, ND

Farm 8579



Tract Boundary Noncropland  
 PLSS Cropland

Wetland Determination Identifiers

- Restricted Use
- Limited Restrictions
- Exempt from Conservation
- Compliance Provisions

Unless Otherwise Noted:

- |                                |                              |
|--------------------------------|------------------------------|
| Barley = Spring for Grain      | Soybeans = Common for Grain  |
| Canola = Spring for Processing | Sunflowers = Oil for Grain   |
| Corn = Yellow for Grain        | Wheat = Spring for Grain     |
| Flax = Common for Grain        | All fields are non-irrigated |
| Oats = Spring for Grain        | Shares are 100% to operator  |

2025 Program Year  
Phy. County: Richland  
2023 imagery

**S29 T132N R49W**

0 370 740  
Ft

United States Department of Agriculture (USDA) Farm Service Agency (FSA) maps are for FSA Program administration only. This map does not represent a legal survey or reflect actual ownership; rather it depicts the information provided directly from the producer and/or National Agricultural Imagery Program (NAIP) imagery. The producer accepts the data 'as is' and assumes all risks associated with its use. USDA-FSA assumes no responsibility for actual or consequential damage incurred as a result of any user's reliance on this data outside FSA Programs. Wetland identifiers do not represent the size, shape, or specific determination of the area. Refer to your original determination (CPA-026 and attached maps) for exact boundaries and determinations or contact USDA Natural Resources Conservation Service (NRCS). USDA is an equal opportunity provider, employer, and lender.

Map Created 04/30/2025