



TRG Tract Report: PREUSS

Scott Hillard; American Forest Management

28 April, 2025

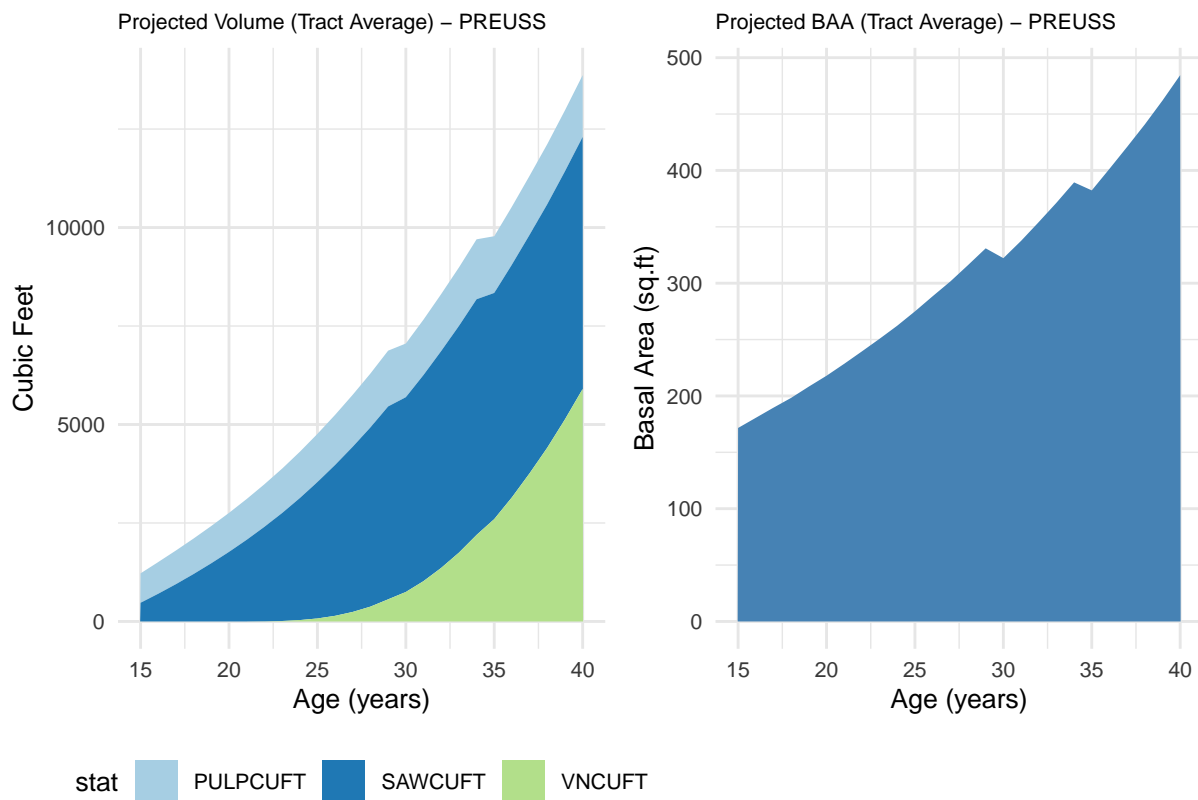
- All volume information (VNCUFT,PULPCUFT,SAWCUFT) represent projections based on inventory. These are for informational purposes. Actual volumes may vary from projections, likewise AFM cannot guarantee projections. Projections include silvicultural treatments, such as thinning. There are four stands Tank-9, Goode-4, Hansen-3, and Preuss-6 which were experimental plantings of white oak, or oak and walnut mixed. These were excluded from the analysis within those tracts. Overall they represent a total of approximately 42 acres.

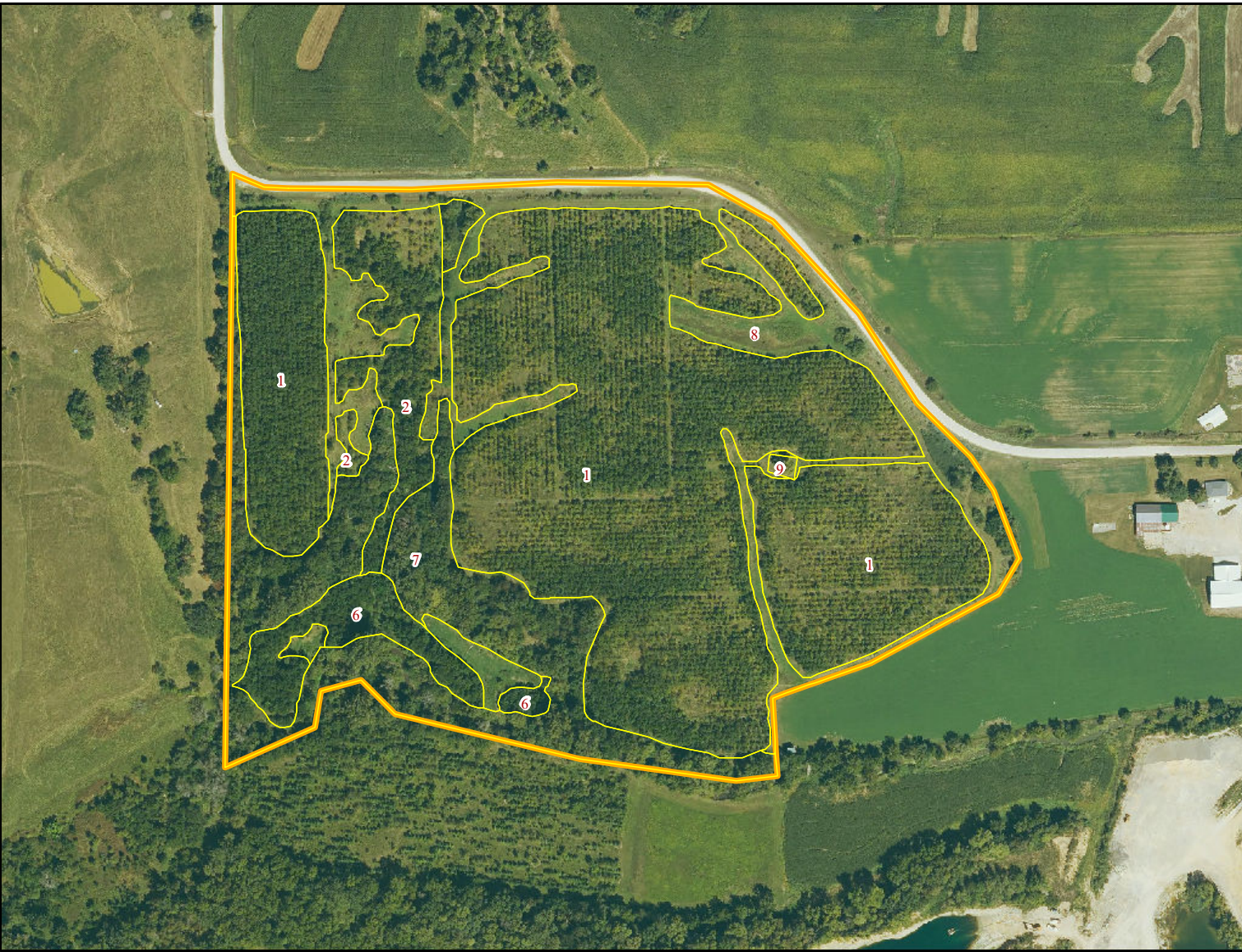
Table 1: Est. Current Stand Inventory for (Productive Area-Walnut Stands Only); PREUSS

Stand	GIS.Area	Current_Age	DBH	BAPA	TPA	TH	SAWCUFT	PULPCUFT
1	28.08	13	4.0	24.5	260	28.9	8.1	14.0
2	2.80	13	5.9	31.1	160	43.5	187.4	306.3
7	8.37	13	3.7	35.1	456	27.0	2.8	4.8

Table 2: Weighted Tract Average (Productive Area-Walnut Stands Only)

GIS_Area_Productive	GIS_Area_Total	Avg_DBH	Avg_BA	Avg_TPA	Avg_HT	Avg_SAWCUFT	Avg_PULPCUFT
39.2	48.9	4.1	27.2	294.6	29.5	19.7	32.9





Tract Name	Stand	State	County	Acres	Origin	Dom Species	Year Est
PREUSS	TRGBW024-303-1	Iowa	Clinton	28.08	Planted	Walnut	2011
PREUSS	TRGBW024-303-2	Iowa	Clinton	2.80	Planted	Walnut	2011
PREUSS	TRGBW024-303-6	Iowa	Clinton	1.88	Planted	White Oak	2011
PREUSS	TRGBW024-303-7	Iowa	Clinton	8.37	Natural	Hardwood	0
PREUSS	TRGBW024-303-8	Iowa	Clinton	7.68	Open	Undefined	0
PREUSS	TRGBW024-303-9	Iowa	Clinton	0.07	Open	Undefined	0
				48.88			

PREUSS



1 inch = 378 feet

1/27/2025 mgm

