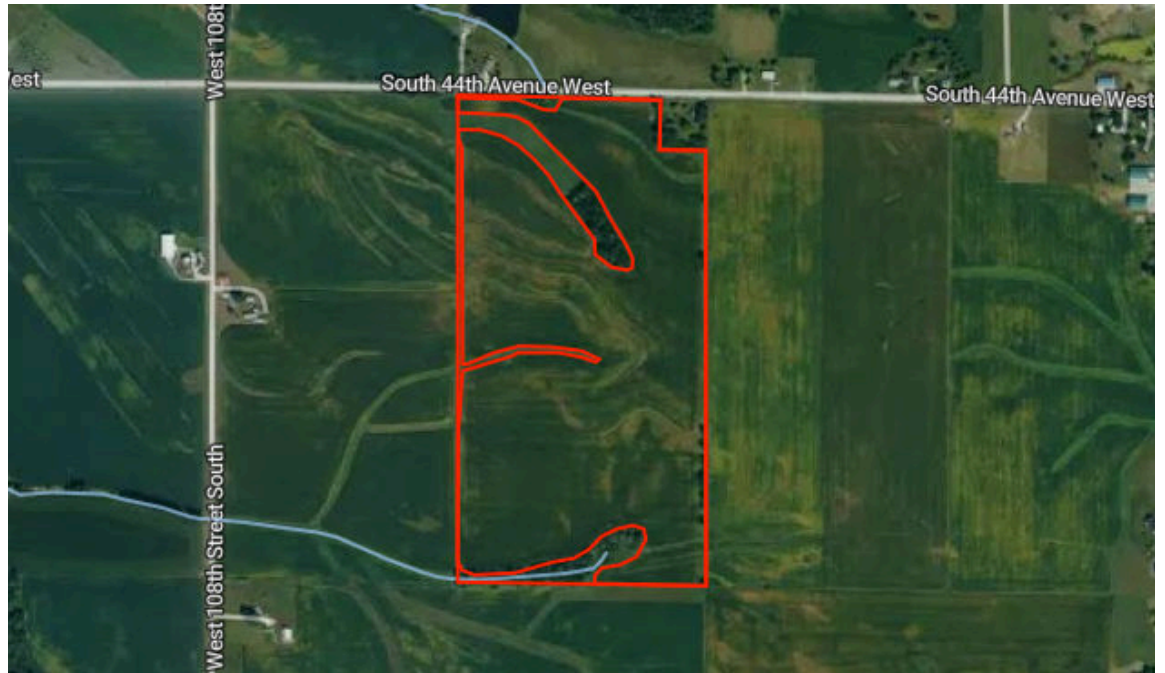




Patrick Vaughn and Arthur Vaughn

148.8 Acres



Farmers National Company

Comments

Jasper County, IA



Property Overview

148.8 Acres, 2 Boundaries



Property Overview



Jasper County, IA

78.4 Acres, Boundary 1 of 2



Jasper County, IA
Township: 079N

Locations
13 79N 21W

Acres
78.44

Property Overview



Jasper County, IA

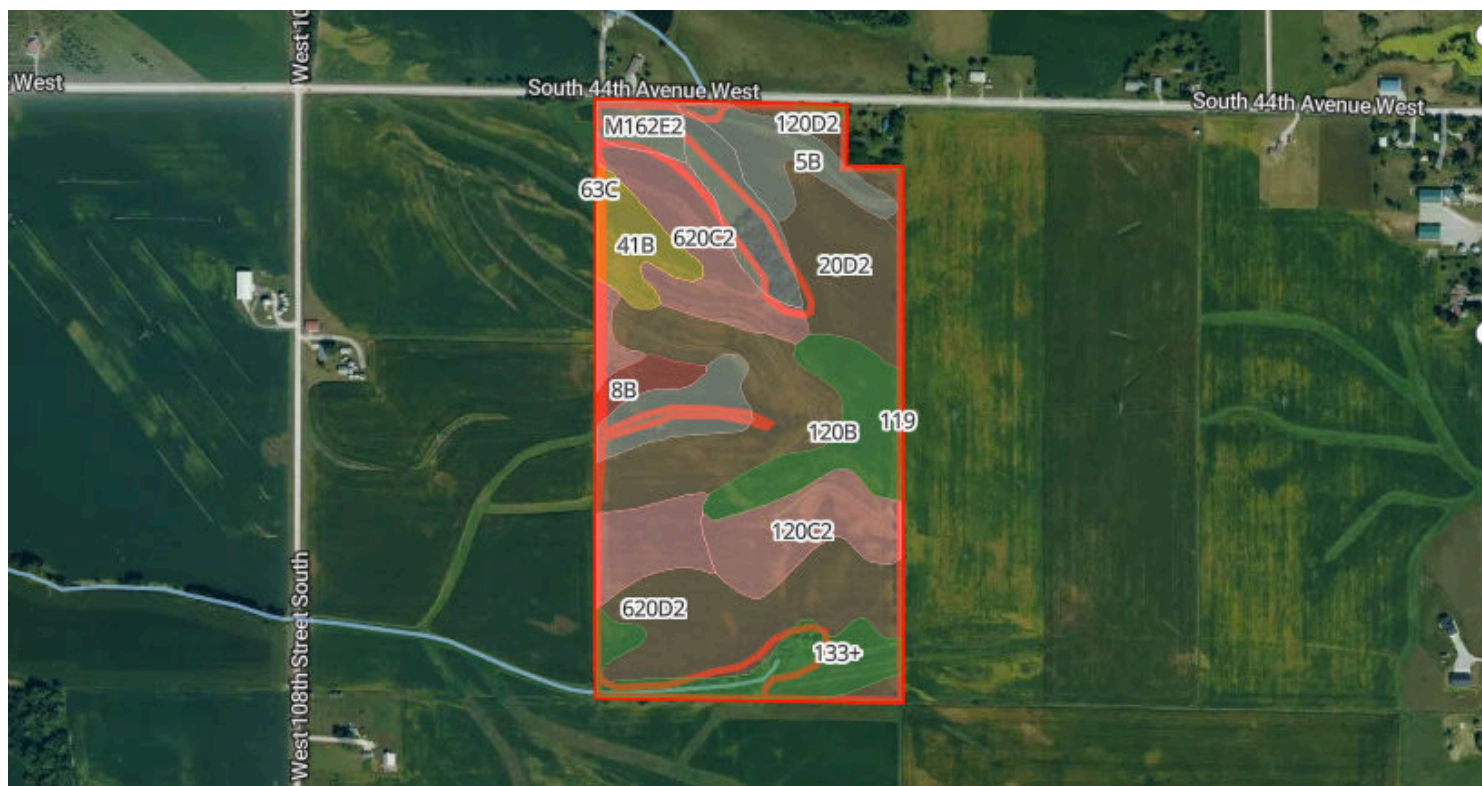
70.4 Acres, Boundary 2 of 2



Jasper County, IA
Township: 079N

Locations
13 79N 21W

Acres
70.36



69/100 CSR2

	Code	Soil Description	% of Selection	Acres	Non-IRR Class	IRR Class	State Score (CSR2)
●	620...	Port Byron silt loam, 9 to 14 percent slopes, moderately eroded	27.6%	21.6	3e	--	59
●	620...	Port Byron silt loam, 5 to 9 percent slopes, moderately eroded	14.2%	11.1	3e	--	87
●	5B	Ackmore-Colo complex, 2 to 5 percent slopes	9.9%	7.8	2w	--	77
●	20D2	Killduff silty clay loam, 9 to 14 percent slopes, eroded	8.9%	7	3e	--	55
●	120B	Tama silty clay loam, 2 to 5 percent slopes	8.6%	6.7	2e	--	95

Soils

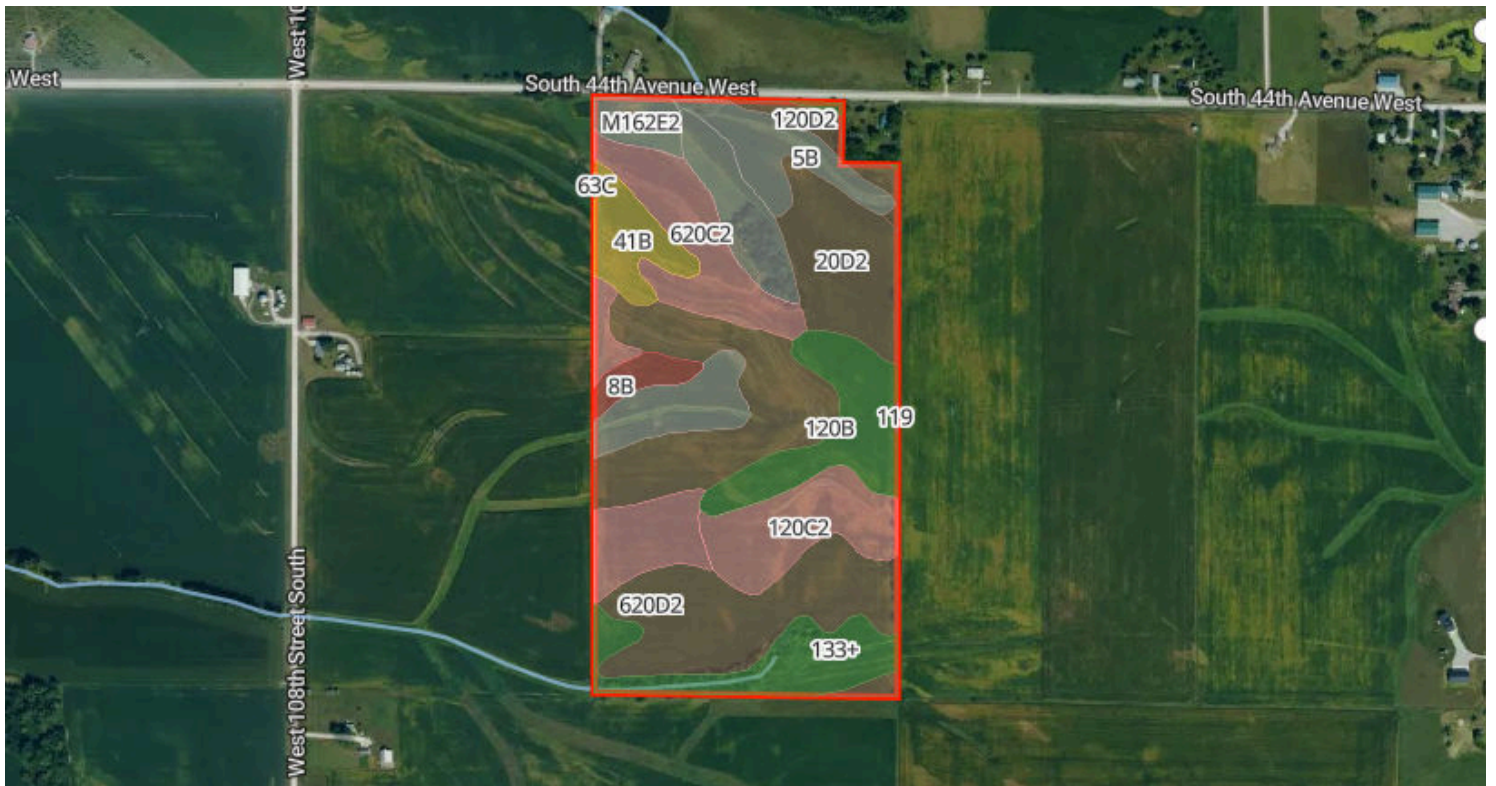


148.8 Acres, 2 Boundaries

	Code	Soil Description	% of Selection	Acres	Non-IRR Class	IRR Class	State Score (CSR2)
●	120...	Tama silty clay loam, 5 to 9 percent slopes, eroded	7.9%	6.2	3e	--	87
●	133+	Colo silt loam, 0 to 2 percent slopes, occasionally flooded,...	7.6%	5.9	2w	--	78
●	179E2	Gara loam, 14 to 18 percent slopes, moderately eroded	4.9%	3.8	6e	--	26
●	41B	Sparta loamy sand, 2 to 5 percent slopes	4.3%	3.4	4s	2e	42
●	M16...	Downs silt loam, till plain, 14 to 18 percent slopes, eroded	2.3%	1.8	4e	--	45
●	120...	Tama silty clay loam, 9 to 14 percent slopes, eroded	1.9%	1.5	3e	--	62
●	8B	Judson silty clay loam, 2 to 5 percent slopes	1.9%	1.5	2e	--	84
●	119	Muscatine silty clay loam, 0 to 2 percent slopes	0.1%	0.1	1	--	100
●	63C	Chelsea loamy fine sand, 5 to 9 percent slopes	<0.1%	0	4s	--	14

Soils by Boundary

78.4 Acres, Boundary 1 of 2



69/100 CSR2

	Code	Soil Description	% of Selection	Acres	Non-IRR Class	IRR Class	State Score (CSR2)
●	620...	Port Byron silt loam, 9 to 14 percent slopes, moderately eroded	27.6%	21.6	3e	--	59
●	620...	Port Byron silt loam, 5 to 9 percent slopes, moderately eroded	14.2%	11.1	3e	--	87
●	5B	Ackmore-Colo complex, 2 to 5 percent slopes	9.9%	7.8	2w	--	77
●	20D2	Killduff silty clay loam, 9 to 14 percent slopes, eroded	8.9%	7	3e	--	55
●	120B	Tama silty clay loam, 2 to 5 percent slopes	8.5%	6.7	2e	--	95

Soils

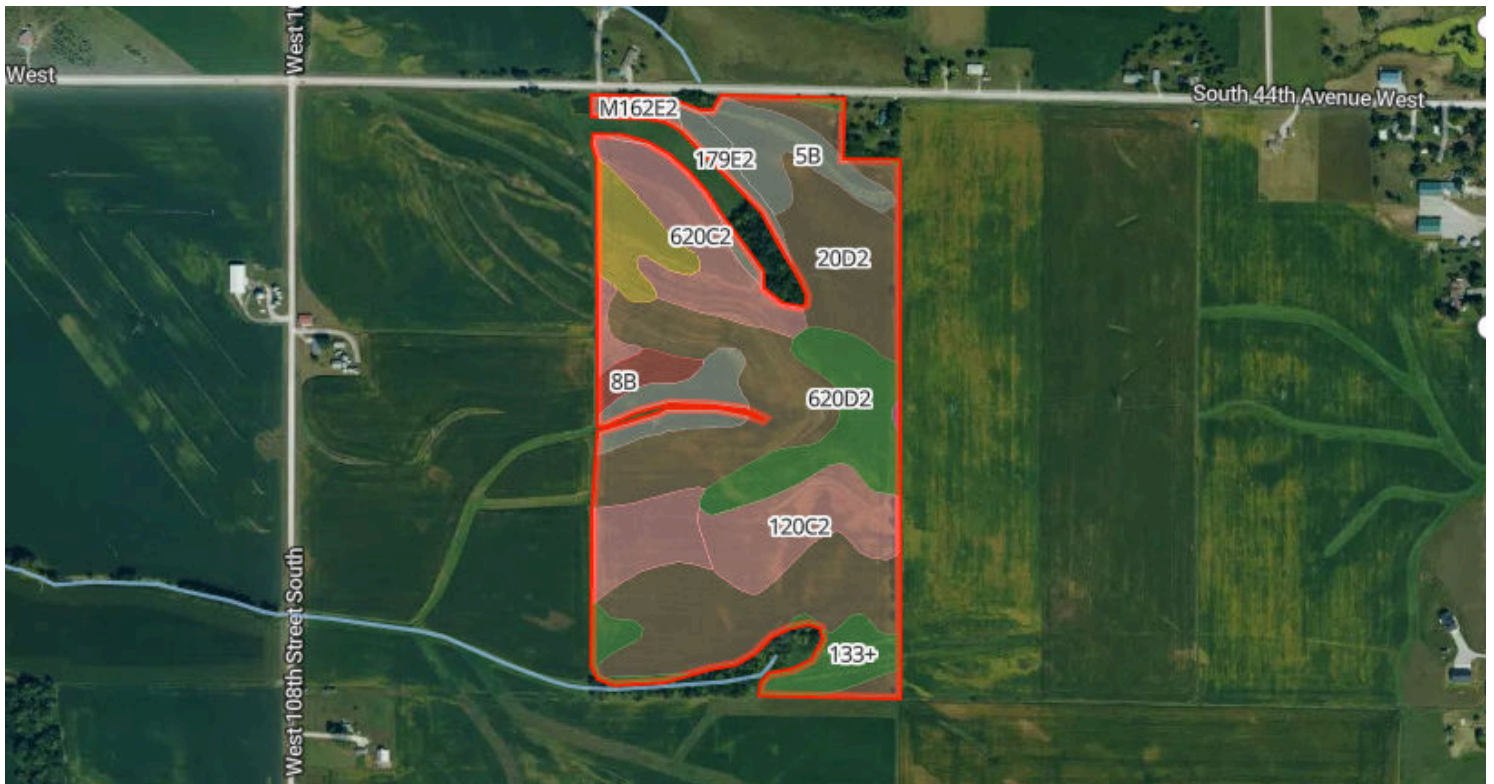


78.4 Acres, Boundary 1 of 2

	Code	Soil Description	% of Selection	Acres	Non-IRR Class	IRR Class	State Score (CSR2)
●	120...	Tama silty clay loam, 5 to 9 percent slopes, eroded	7.9%	6.2	3e	--	87
●	133+	Colo silt loam, 0 to 2 percent slopes, occasionally flooded,...	7.5%	5.9	2w	--	78
●	179E2	Gara loam, 14 to 18 percent slopes, moderately eroded	4.9%	3.8	6e	--	26
●	41B	Sparta loamy sand, 2 to 5 percent slopes	4.3%	3.4	4s	2e	42
●	M16...	Downs silt loam, till plain, 14 to 18 percent slopes, eroded	2.3%	1.8	4e	--	45
●	120...	Tama silty clay loam, 9 to 14 percent slopes, eroded	1.9%	1.5	3e	--	62
●	8B	Judson silty clay loam, 2 to 5 percent slopes	1.9%	1.5	2e	--	84
●	119	Muscatine silty clay loam, 0 to 2 percent slopes	0.1%	0.1	1	--	100
●	63C	Chelsea loamy fine sand, 5 to 9 percent slopes	<0.1%	0	4s	--	14

Soils by Boundary

70.4 Acres, Boundary 2 of 2



70.4/100 CSR2

	Code	Soil Description	% of Selection	Acres	Non-IRR Class	IRR Class	State Score (CSR2)
●	620...	Port Byron silt loam, 9 to 14 percent slopes, moderately eroded	30.1%	21.2	3e	--	59
●	620...	Port Byron silt loam, 5 to 9 percent slopes, moderately eroded	14.9%	10.5	3e	--	87
●	20D2	Killduff silty clay loam, 9 to 14 percent slopes, eroded	9.8%	6.9	3e	--	55
●	5B	Ackmore-Colo complex, 2 to 5 percent slopes	9.8%	6.9	2w	--	77
●	120B	Tama silty clay loam, 2 to 5 percent slopes	9.5%	6.7	2e	--	95

Soils

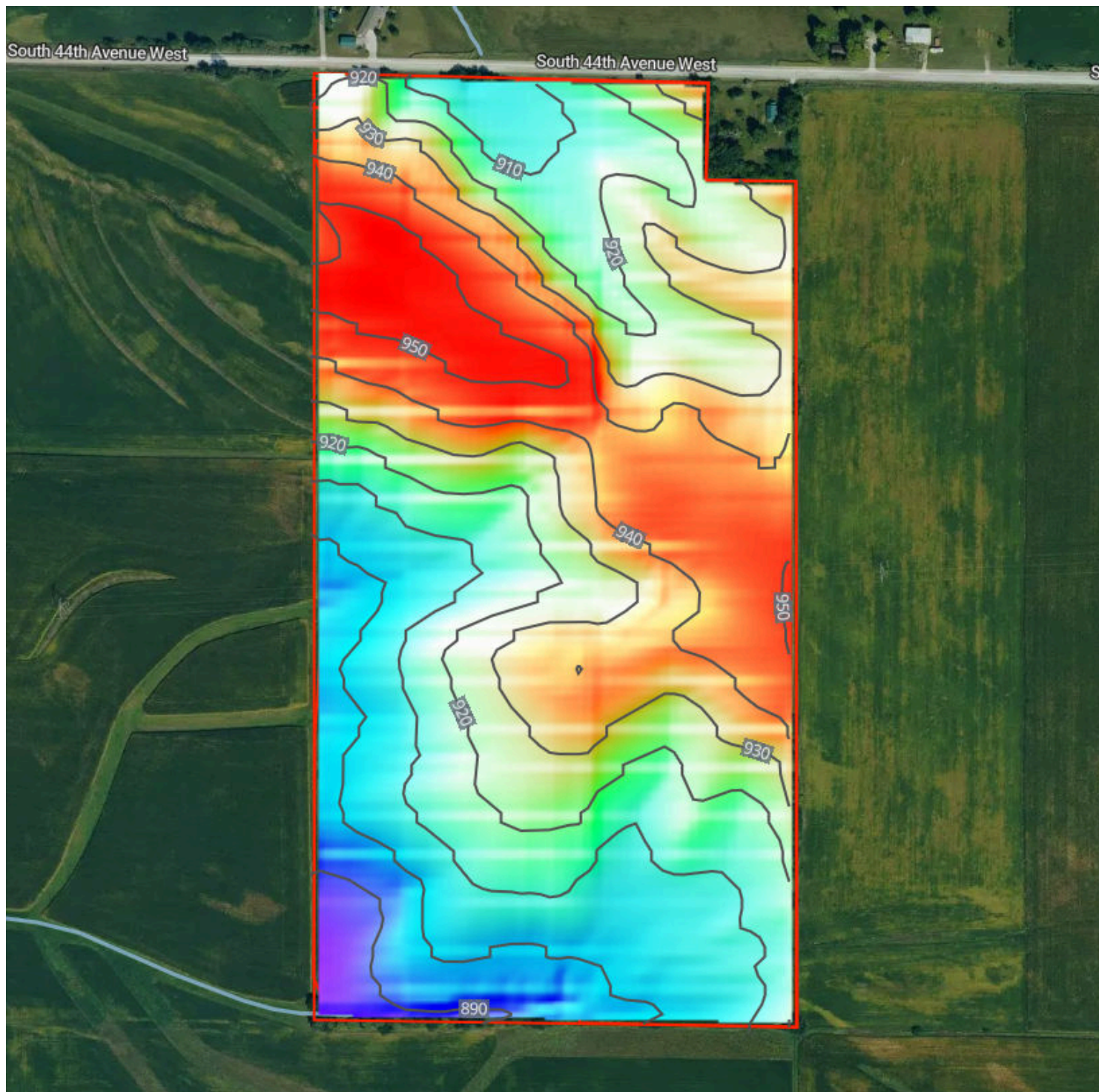


70.4 Acres, Boundary 2 of 2

	Code	Soil Description	% of Selection	Acres	Non-IRR Class	IRR Class	State Score (CSR2)
●	120...	Tama silty clay loam, 5 to 9 percent slopes, eroded	8.9%	6.2	3e	--	87
●	133+	Colo silt loam, 0 to 2 percent slopes, occasionally flooded,...	5.2%	3.7	2w	--	78
●	41B	Sparta loamy sand, 2 to 5 percent slopes	4.4%	3.1	4s	2e	42
●	179E2	Gara loam, 14 to 18 percent slopes, moderately eroded	2.1%	1.5	6e	--	26
●	120...	Tama silty clay loam, 9 to 14 percent slopes, eroded	2.0%	1.4	3e	--	62
●	8B	Judson silty clay loam, 2 to 5 percent slopes	1.9%	1.4	2e	--	84
●	M16...	Downs silt loam, till plain, 14 to 18 percent slopes, eroded	1.1%	0.8	4e	--	45
●	119	Muscatine silty clay loam, 0 to 2 percent slopes	0.1%	0.1	1	--	100

Elevation

148.8 Acres, 2 Boundaries



Source: USGS 3 Meter Dem

Interval: 10 feet

Range: 72.1 feet

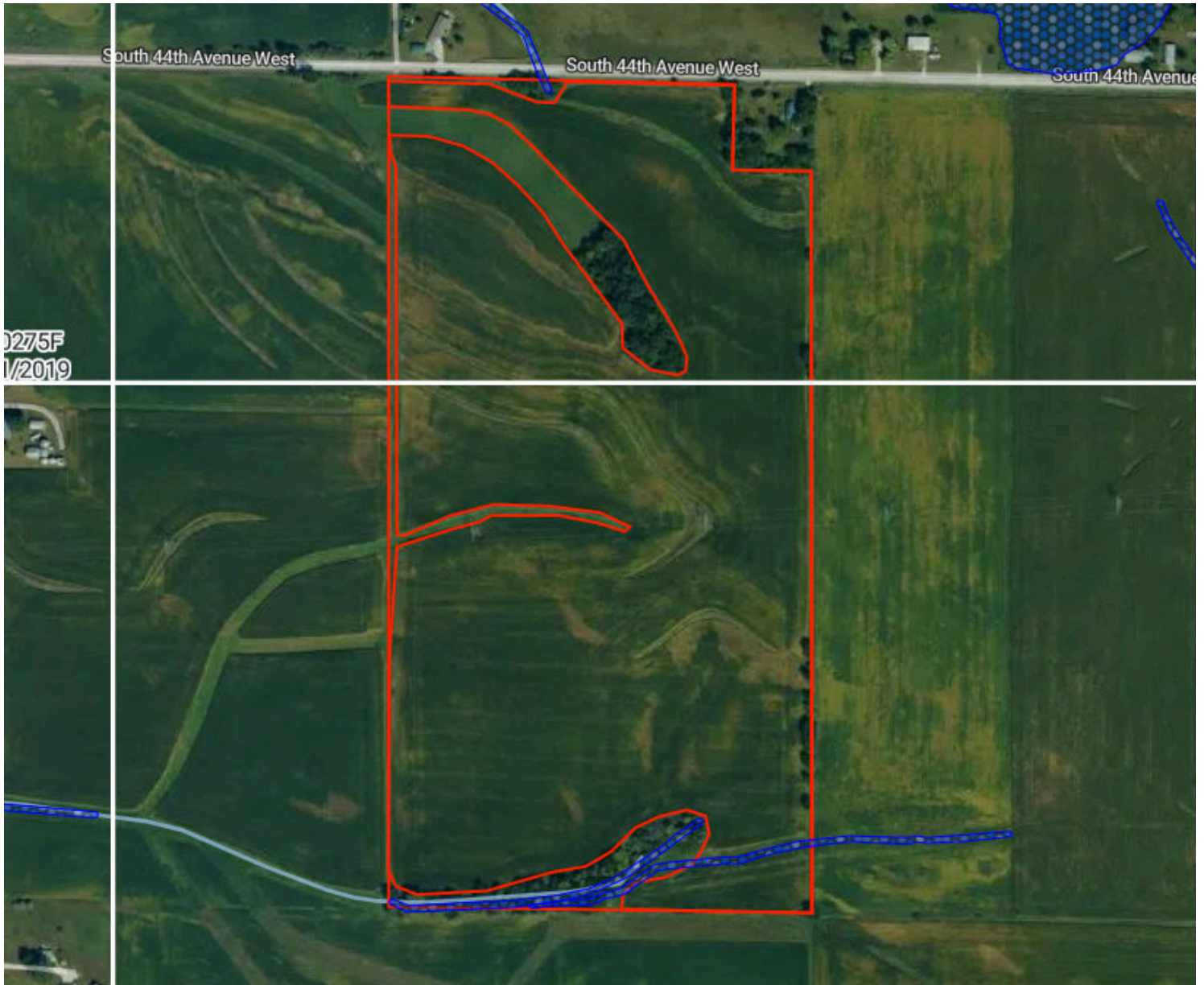
Min: 881 feet

Max: 953 feet









Slope: 5.7%

Min: 0.1%

Max: 27.7%



Flood Zone Hazard

-  0.2% annual flood hazard
-  1% annual flood hazard
-  Future 1% annual flood hazard
-  Increased risk due to levee
-  Reduced risk due to levee
-  Regulatory Floodway
-  Special Floodway
-  Wetlands