

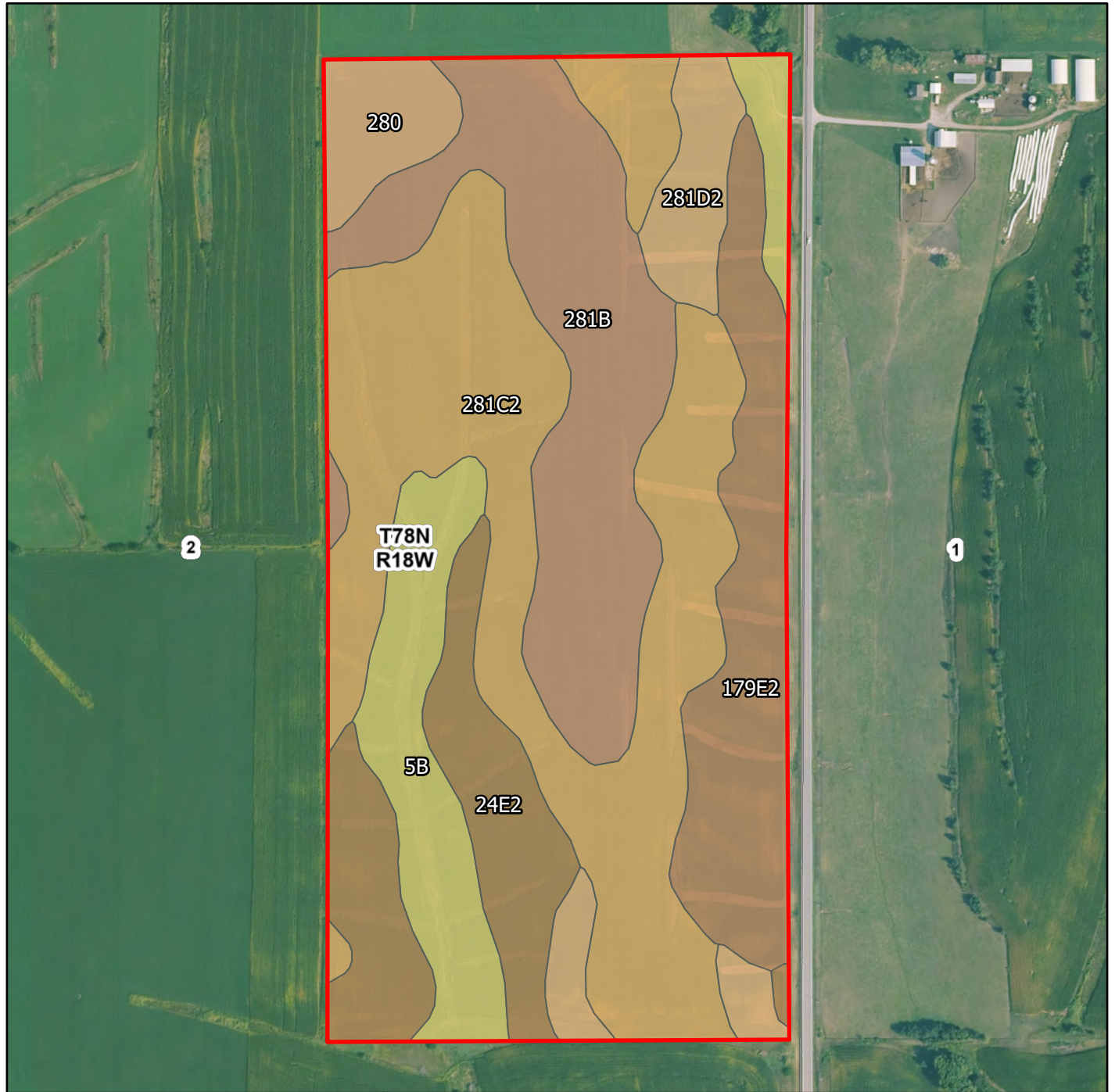
**Peter C. Van Soelen Rev. Trust**  
**76.6 Ac**  
**Jasper County, Iowa**

Latitude: 41.5854°N  
 Longitude: 92.8687°W  
 Imagery Source: USDA NAIP  
 Soil Data Source: USDA NRCS  
 Boundaries are Approximate



**Peter C. Van Soelen Rev. Trust**  
**76.6 Ac**  
**Jasper County, Iowa**

Latitude: 41.5883°N  
Longitude: 92.8934°W  
Imagery Source: USDA NAIP  
Soil Data Source: USDA NRCS  
Boundaries are Approximate

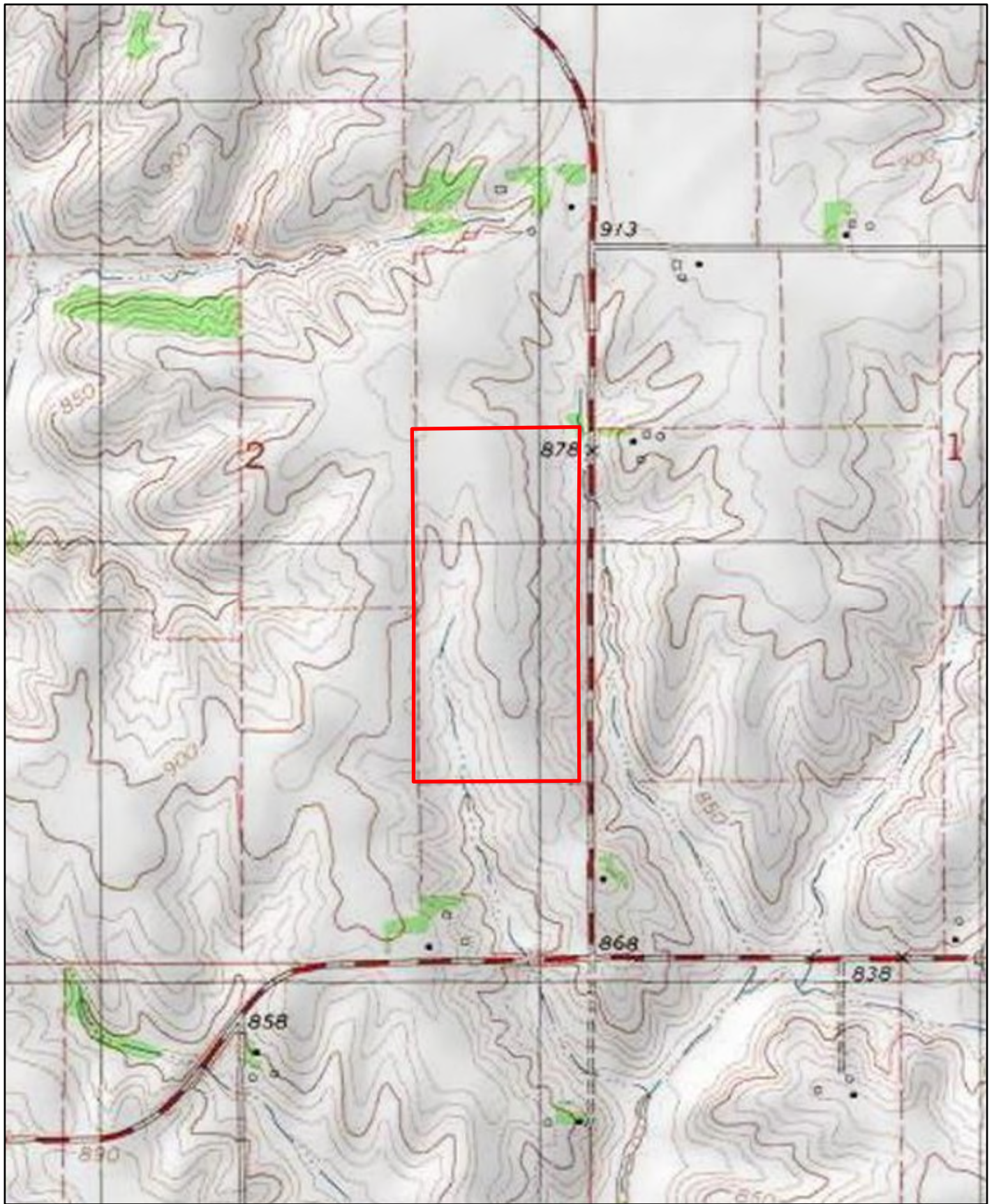


Map Symbol	Name	Non-IRR LCC	CSR2	ACRES
281C2	Otley silty clay loam, 5 to 9 percent slopes, eroded	3e	82	25.6
281B	Otley silty clay loam, 2 to 5 percent slopes	2e	91	15.2
179 E2	Gara loam, 14 to 18 percent slopes, moderately eroded	6e	26	9.5
24 E2	Shelby loam, 14 to 18 percent slopes, moderately eroded	4e	37	8.9
5B	Ackmore-Colo complex, 2 to 5 percent slopes	2w	77	8.2
281D2	Otley silty clay loam, 9 to 14 percent slopes, eroded	3e	54	4.5
280	Mahaska silty clay loam, 0 to 2 percent slopes	1	94	2.7
TOTAL			69.5	74.6



**Peter C. Van Soelen Rev. Trust**  
**76.6 Ac**  
**Jasper County, Iowa**

Latitude: 41.5883°N  
Longitude: 92.8934°W  
Imagery Source: USDA NAIP  
Soil Data Source: USDA NRCS  
Boundaries are Approximate



**Peter C. Van Soelen Rev. Trust**  
**76.6 Ac**  
**Jasper County, Iowa**

Latitude: 41.5883°N  
Longitude: 92.8934°W  
Imagery Source: USDA NAIP  
Soil Data Source: USDA NRCS  
Boundaries are Approximate