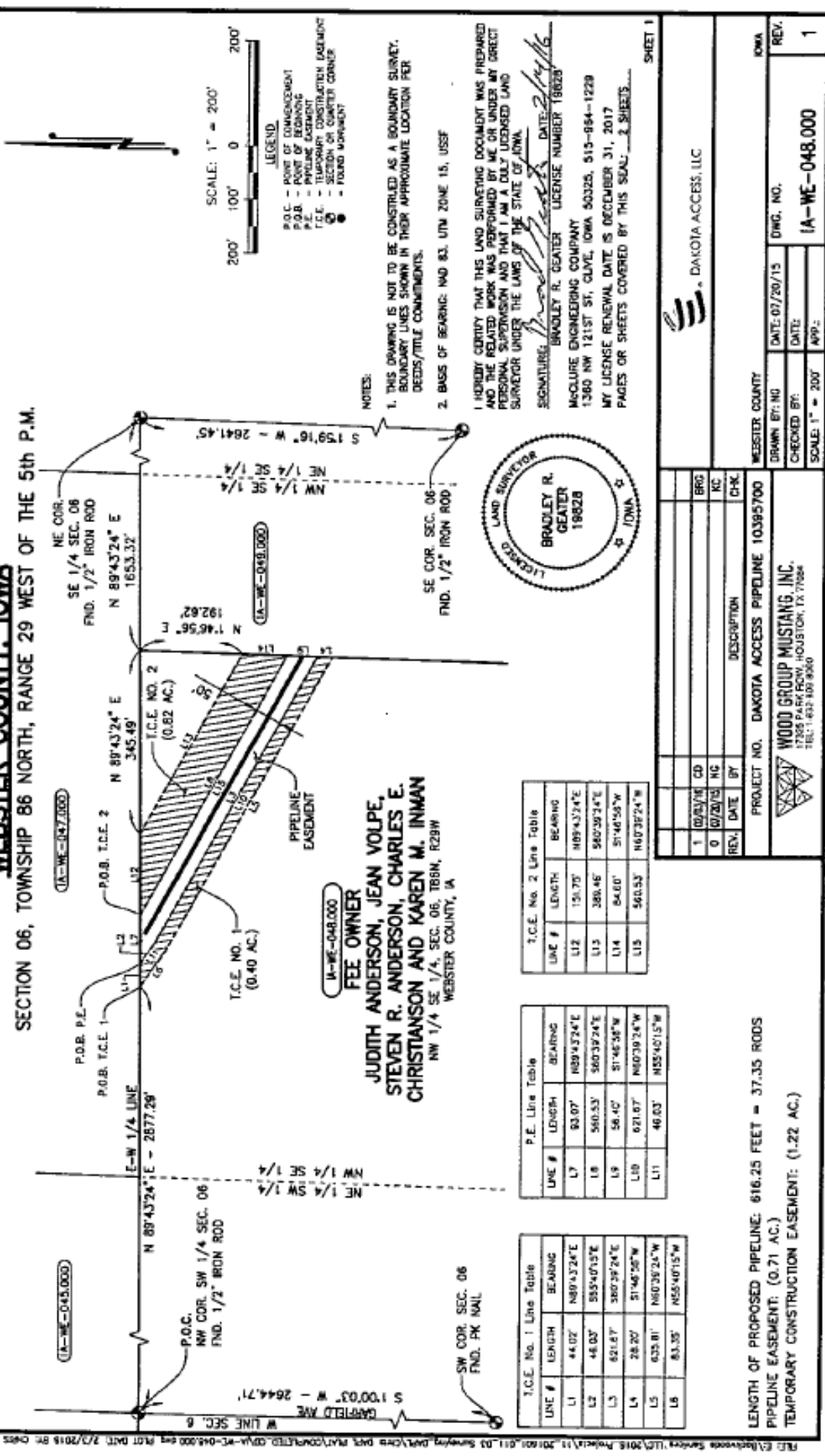


WEBSTER COUNTY, IOWA

SECTION 06, TOWNSHIP 86 NORTH, RANGE 29 WEST OF THE 5th P.M.



FEE OWNER
JUDITH ANDERSON, JEAN VOLPE,
STEVEN R. ANDERSON, CHARLES E.
CHRISTIANSON AND KAREN M. INMAN
 NW 1/4 SE 1/4, SEC. 06, T86N, R29W
 WEBSTER COUNTY, IA

T.C.E. No. 2 Line Table

LINE #	LENGTH	BEARING
L12	151.70'	N89°43'24"E
L13	380.46'	S60°39'24"E
L14	84.00'	S1°44'55"W
L15	560.53'	N60°39'24"W

P.E. Line Table

LINE #	LENGTH	BEARING
L7	93.07'	N89°43'24"E
L8	560.53'	S60°39'24"E
L9	58.40'	S1°46'38"W
L10	621.07'	N60°39'24"W
L11	48.03'	N55°40'15"W

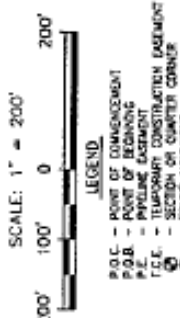
T.C.E. No. 1 Line Table

LINE #	LENGTH	BEARING
L1	44.02'	N89°43'24"E
L2	44.02'	S55°40'15"E
L3	521.87'	S80°39'24"E
L4	28.20'	S1°46'38"W
L5	635.81'	N60°39'24"W
L6	83.35'	N55°40'15"W



DATE: 2/14/16
 SIGNATURE: *Bradley R. Geater*
 BRADLEY R. GEATER LICENSE NUMBER 18628
 McCLURE ENGINEERING COMPANY
 1360 NW 121ST ST, CLIVE, IOWA 50325, 515-894-1229
 MY LICENSE RENEWAL DATE IS DECEMBER 31, 2017
 PAGES OR SHEETS COVERED BY THIS SEAL: 2 SHEETS

NOTES:
 1. THIS DRAWING IS NOT TO BE CONSTRUED AS A BOUNDARY SURVEY. BOUNDARY LINES SHOWN IN THEIR APPROXIMATE LOCATION PER DEEDS/TITLE COMMITMENTS.
 2. BASIS OF BEARING: NAD 83, UTM ZONE 15, USFS



REV.	DATE	BY	DESCRIPTION	CHK.
1	02/23/16	CD		
0	07/20/15	NC		

PROJECT NO.	DAKOTA ACCESS PIPELINE 10385700
DRAWN BY: NO	DATE: 07/20/15
CHECKED BY:	DATE:
SCALE: 1" = 200'	APP: IA-ME-048.000

LENGTH OF PROPOSED PIPELINE: 616.25 FEET = 37.35 RODS
 PIPELINE EASEMENT: (0.71 AC.)
 TEMPORARY CONSTRUCTION EASEMENT: (1.22 AC.)

