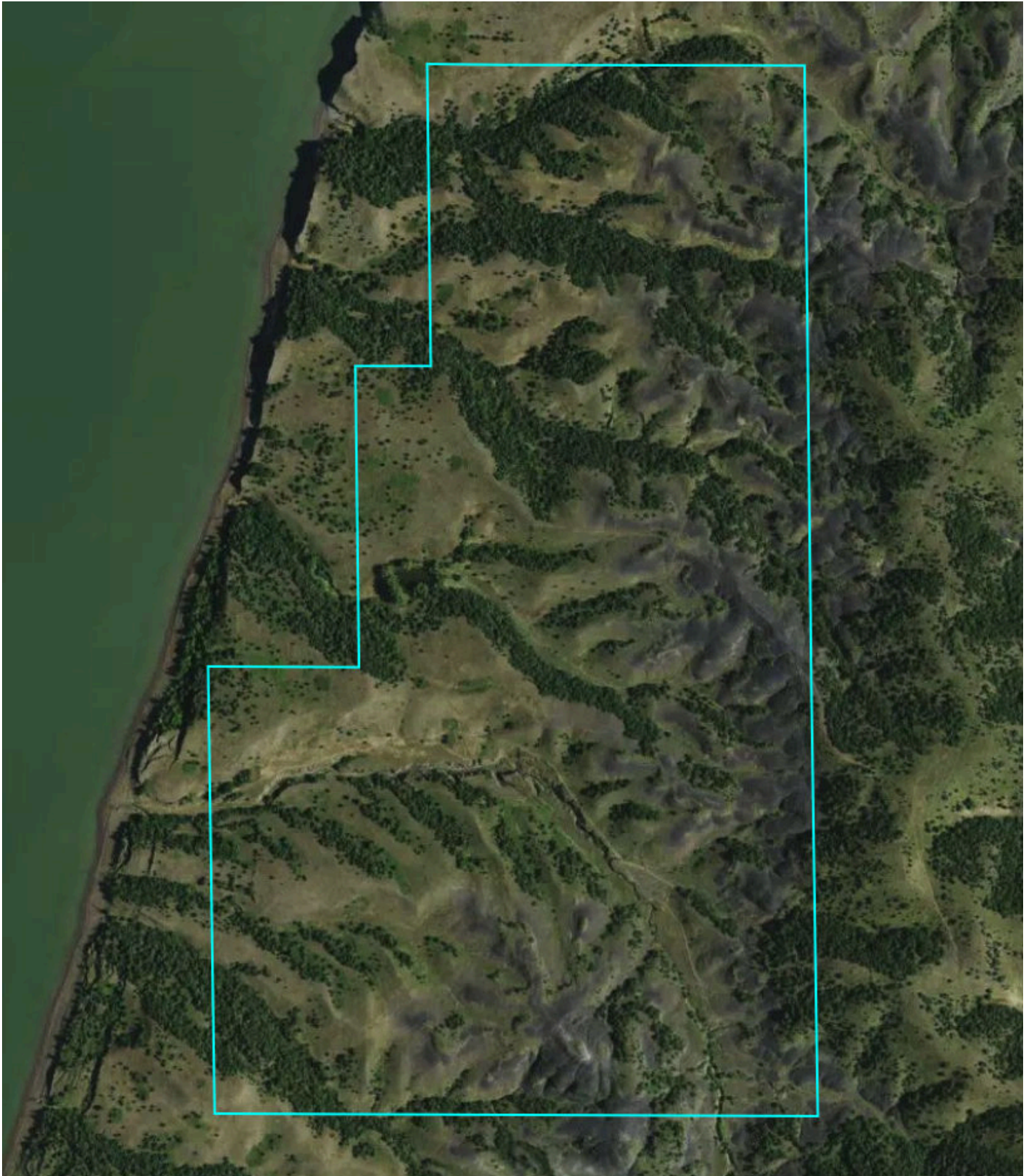


226.1 Acres



Property Overview

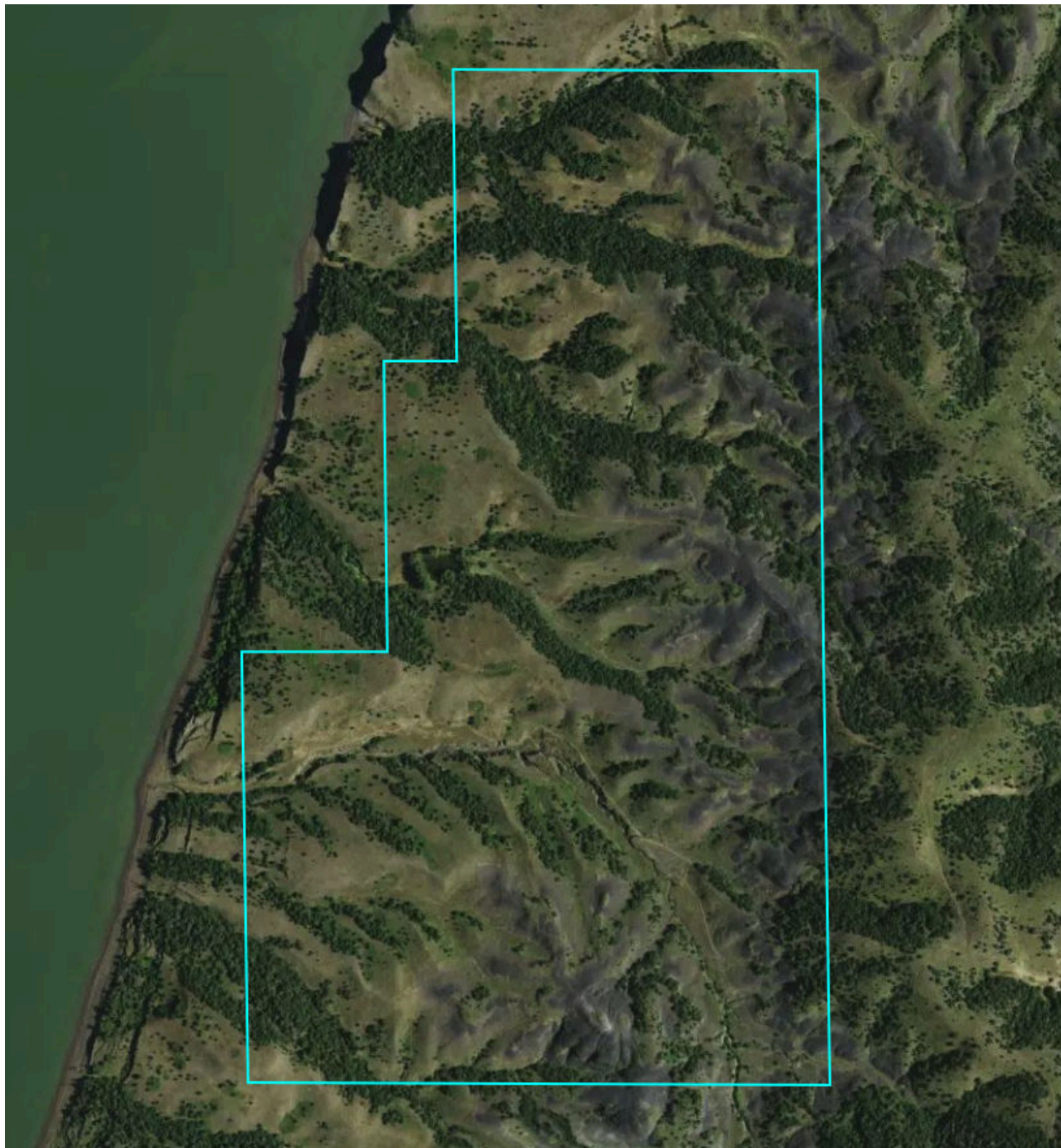
226.1 Acres, 1 Boundary



Property Overview

Buffalo County, SD

226.1 Acres, Boundary 1 of 1



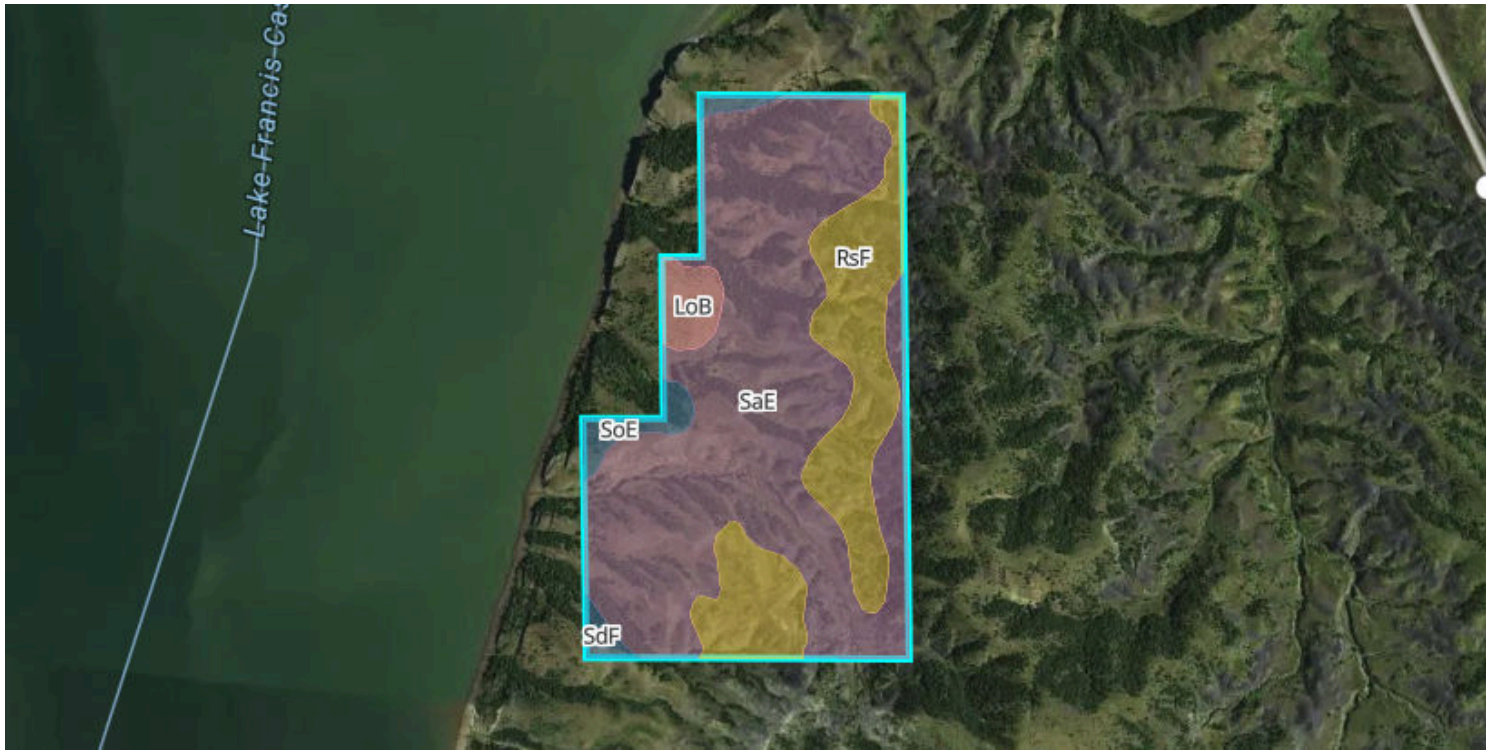
Buffalo County, SD
Township: 106N

Locations
22 106N 71W

Acres
226.11

Soils

226.1 Acres, 1 Boundary



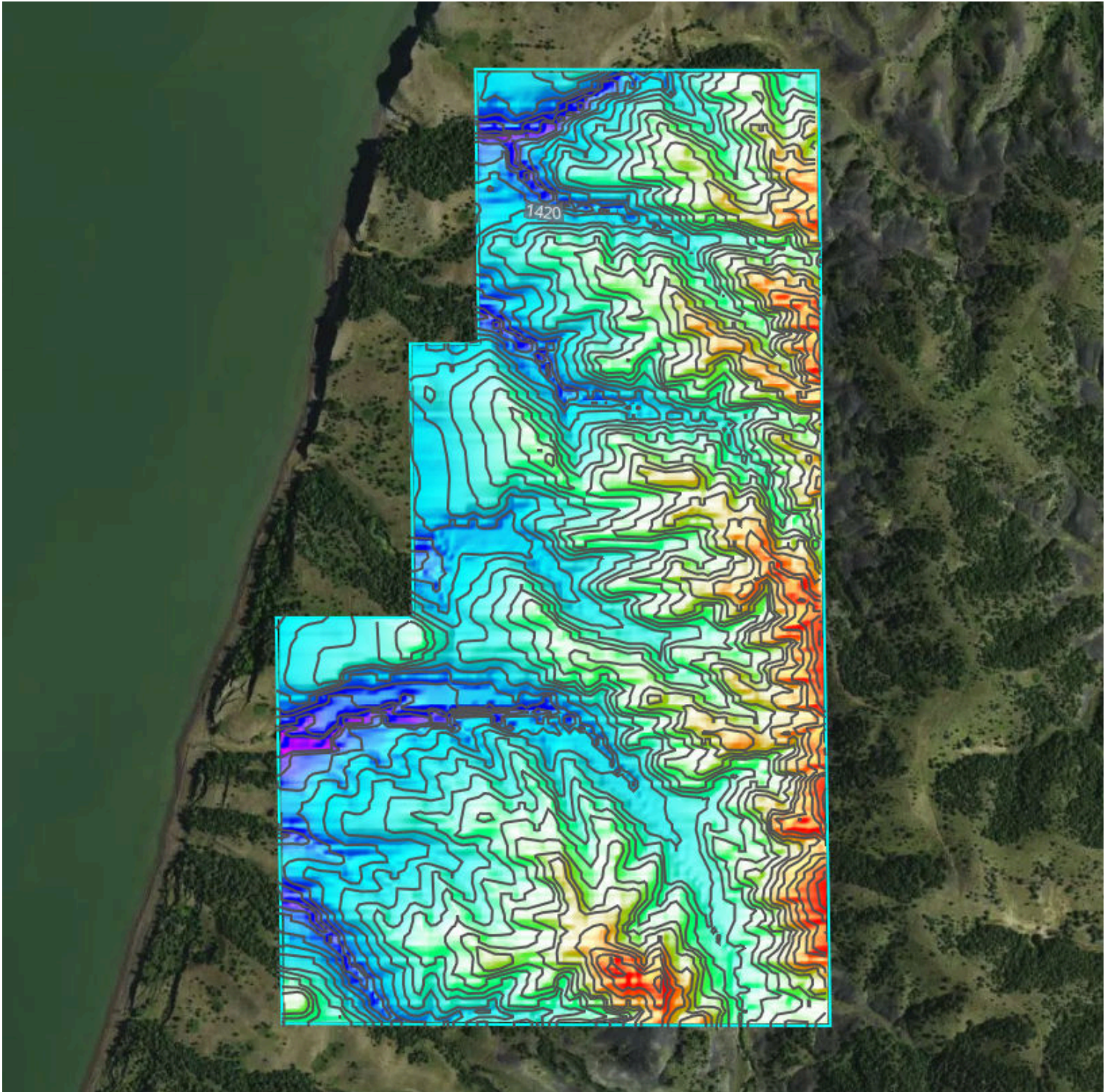
18.7 / 100 NCCPI

19.5 / 100 CPI

Code	Soil Description	% of Selection	Acres	Non-IRR Class	IRR Class	State Score (CPI)	NCCPI
● SaE	Sansarc-Opal clays, 9 to 25 percent slopes	67.8%	153.2	7e	7e	21.22	19.9
● RsF	Rock outcrop-Sansarc complex, 6 to 40 percent slopes	24.9%	56.3	8e	8e	4.85	8.7
● LoB	Lowry silt loam, 3 to 6 percent slopes	3.1%	7.1	2e	2e	91.32	54.6
● SoE	Sully-Lowry silt loams, 9 to 25 percent slopes	2.4%	5.5	4e	--	40.578	45.7
● SdF	Sully silt loam, 25 to 40 percent slopes	1.8%	4	7e	--	4.7	11

Elevation

226.1 Acres, 1 Boundary



1,371.5 feet

1,566.0 feet

Source: USGS 3 Meter Dem

Interval: 10 feet

Range: 194.5 feet

Min: 1371.5 feet

Max: 1566 feet

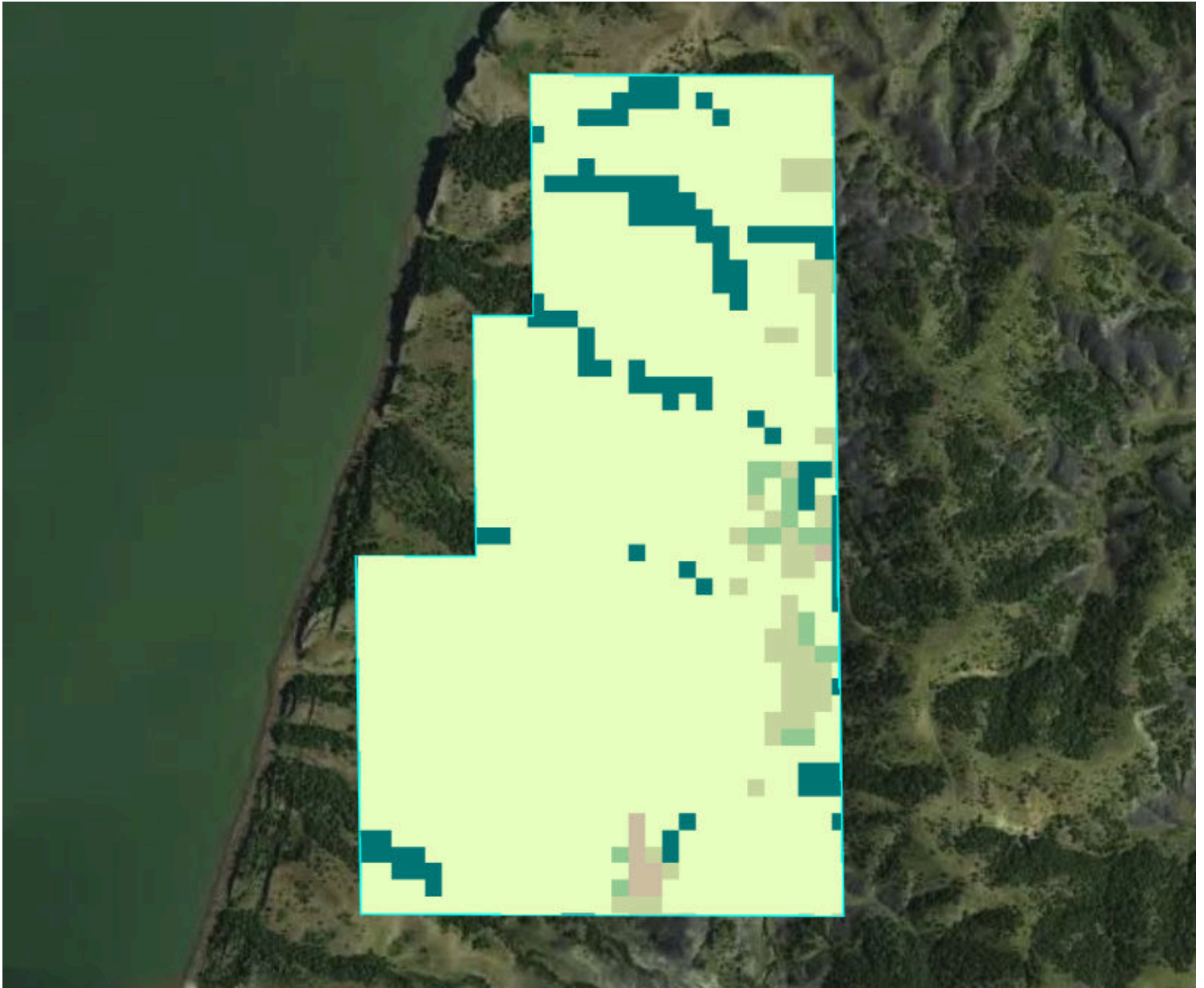
Slope: 18.1%

Min: 0.2%

Max: 64.1%

Land Cover - 2024

226.1 Acres, 1 Boundary



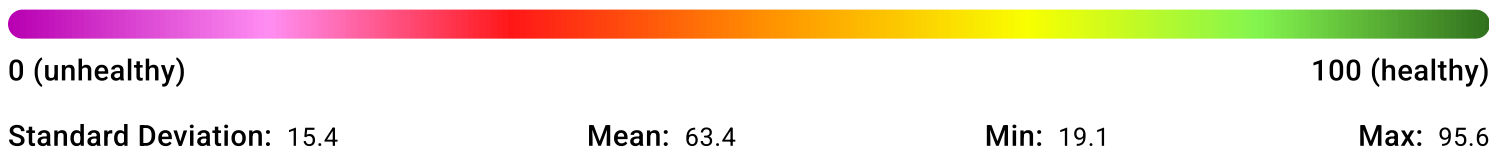
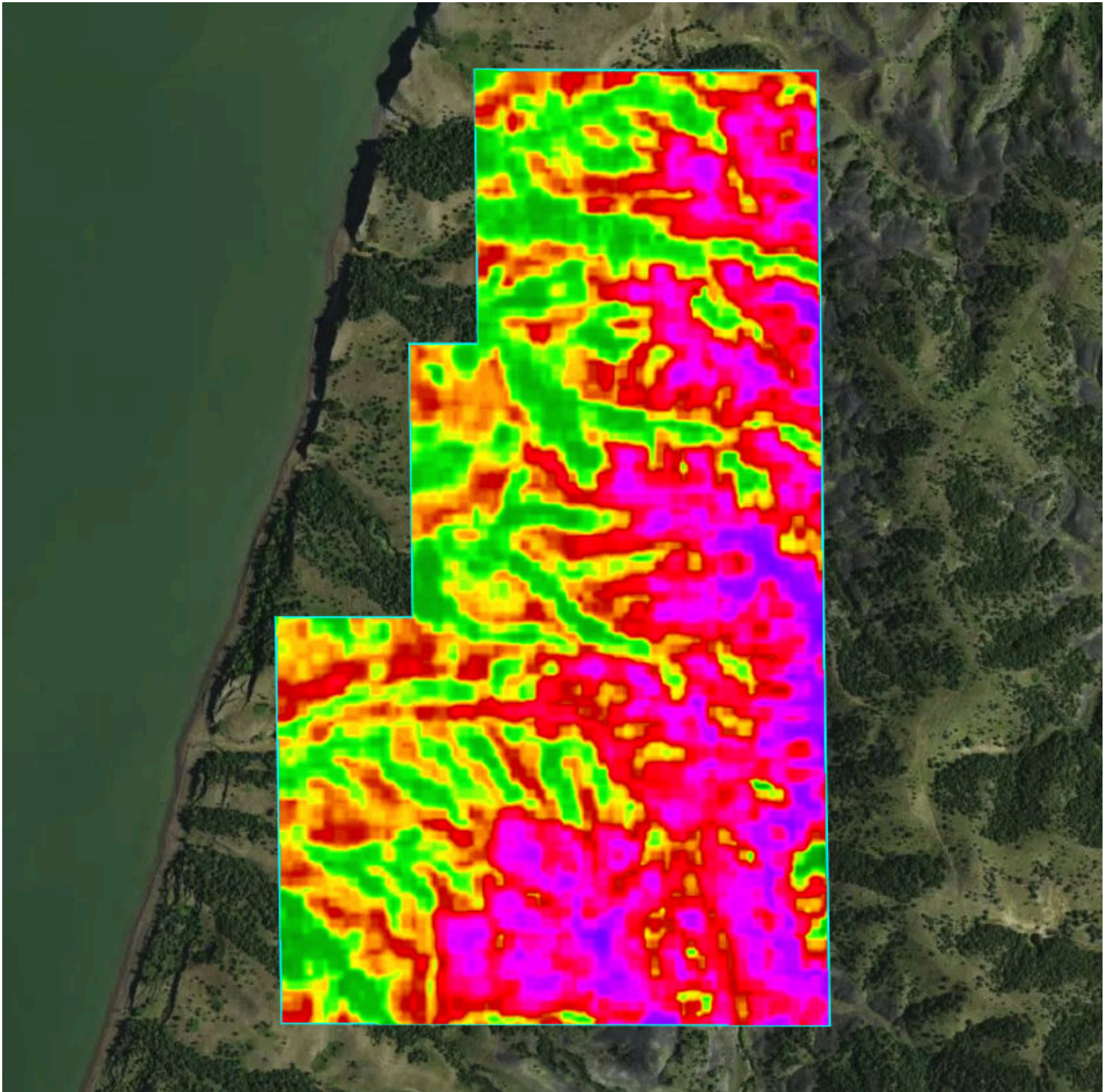
Type	% Coverage
Grassland/Pasture	83.6 %
Evergreen Forest	8.7 %
Shrubland	5.3 %
Other	2.4 %

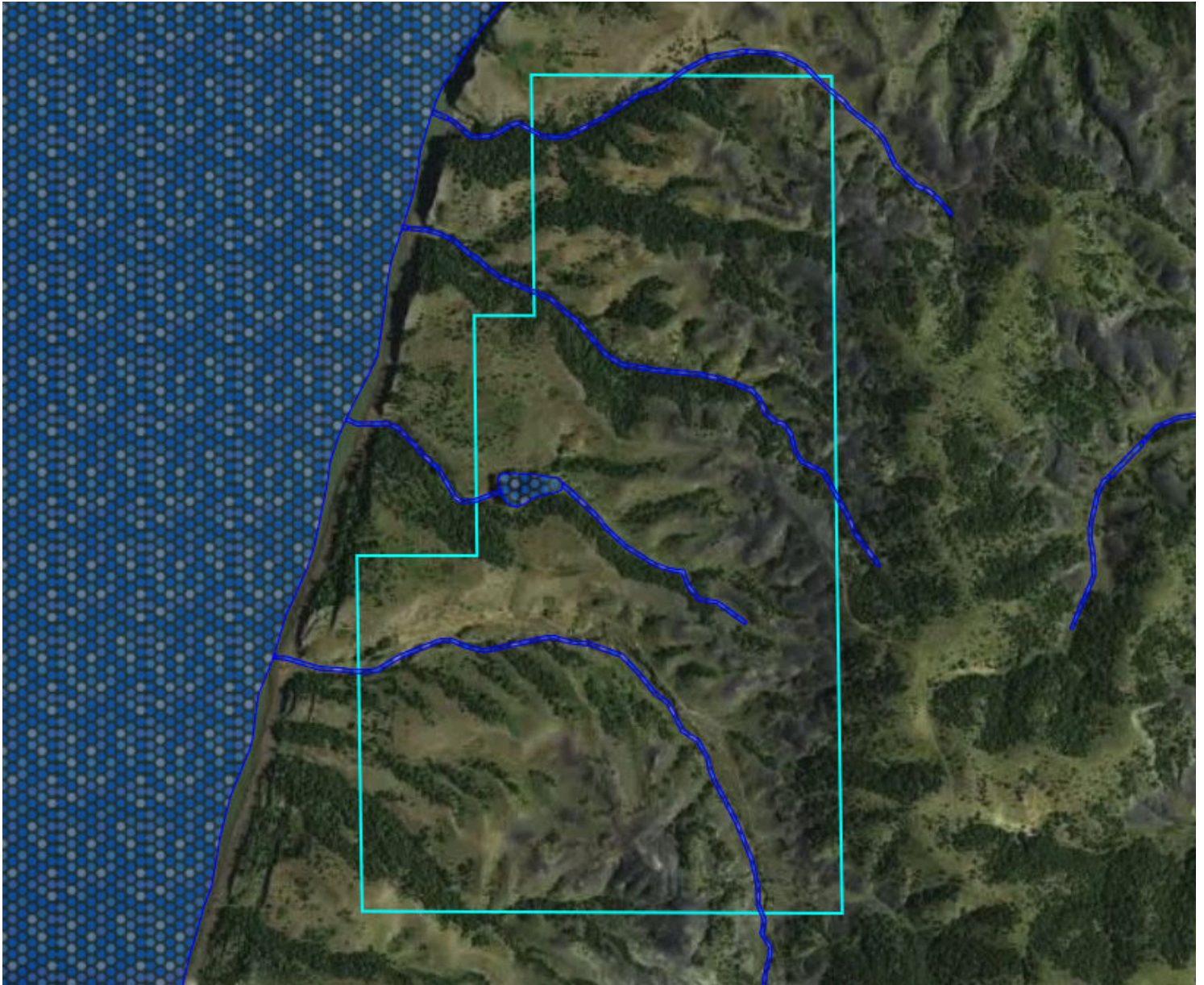


Vegetation Index








226.1 Acres, 1 Boundary

2024





Flood Zone Hazard

-  0.2% annual flood hazard
-  1% annual flood hazard
-  Future 1% annual flood hazard
-  Increased risk due to levee
-  Reduced risk due to levee
-  Regulatory Floodway
-  Special Floodway
-  Wetlands

Historical Imagery

226.1 Acres, 1 Boundary

2023



2022

